

About AAMVA

Related Content

[Strategic Framework](#) [General Information](#) [Office Hours and Holiday Schedule](#)

Who is AAMVA?

The American Association of Motor Vehicle Administrators (AAMVA) is a tax-exempt, nonprofit organization developing model programs in motor vehicle administration, law enforcement and highway safety. The association also serves as an information clearinghouse in these areas, and acts as the international spokesman for these interests.

Founded in 1933, AAMVA represents the state and provincial officials in the United States and Canada who administer and enforce motor vehicle laws. AAMVA's programs encourage uniformity and reciprocity among the states and provinces. The association also serves as a liaison with other levels of government and the private sector. Its development and research activities provide guidelines for more effective public service. AAMVA's membership includes associations, organizations and businesses that share an interest in the association's goals.

AAMVA has four regions incorporated under its umbrella.

- [Contact Us / Staff Listing](#)
- [Systems Support](#)
- [Board of Directors](#)

[AAMVA Policy Positions](#)

[AAMVA Bylaws](#)

[Contact Us/Staff Listing](#)

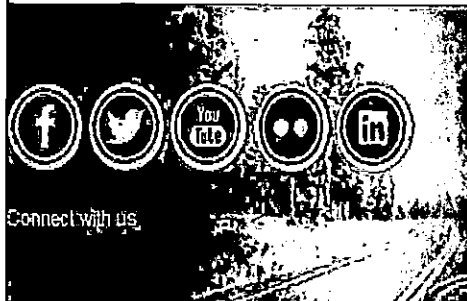
[Career Center](#)

[Biographies & Photos](#)

[AAMVA Lexicon \(glossary of terms\)](#)

[Commonly Used Acronyms](#)

[Report Legal/Ethical Violations](#)



American Association of
Motor Vehicle Administrators

APPENDIX C

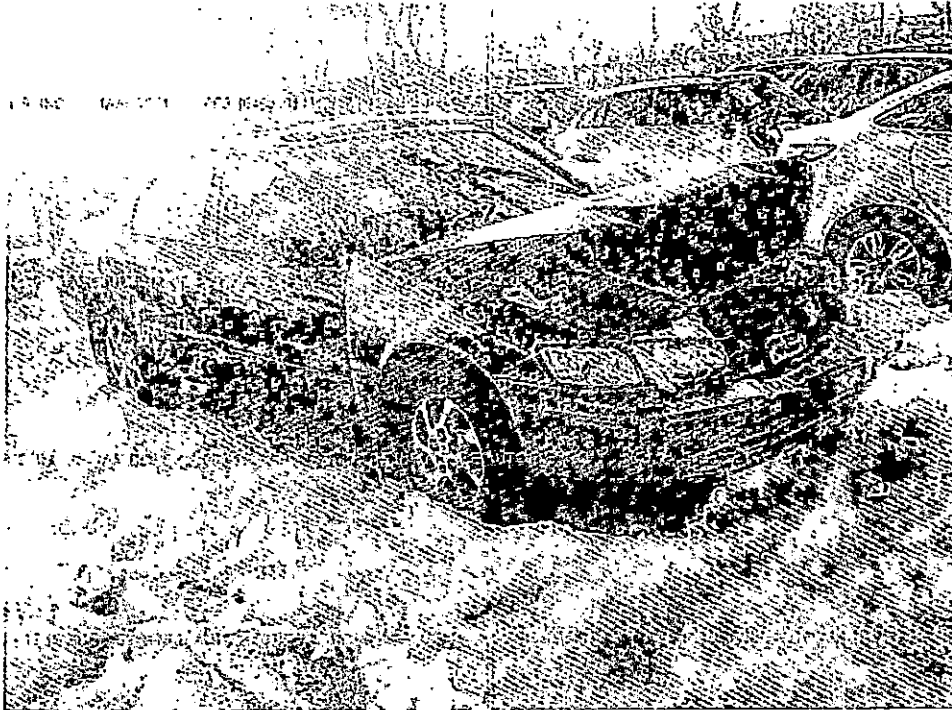
Model Salvage Vehicle Titling Legislation

Salvage, Rebuilt Salvage, Flood, and Nonrepairable Vehicles

Sec. 3- X01 Definitions

- (1) MOTOR VEHICLE -- as used in this Article, motor vehicle has the same meaning as found in Section 1-142 of this Code, however, it does not include vehicles with a GVWR of more than 10,000 pounds.
- (2) SALVAGE VEHICLE -- means:
 - (a) any motor vehicle which has been damaged, destroyed, wrecked, or submerged in water to the extent that the total estimated or actual cost of parts and labor to rebuild or reconstruct the vehicle to its pre-accident condition and for legal operation on the roads or highways exceeds 75 percent of the retail value of the vehicle prior to such damage, as set forth in a current edition of any nationally recognized compilation, including automated data bases, of retail values, as approved by the department. The value of repair parts for purposes of this paragraph shall be determined by using the current published retail cost of the original equipment manufacturer parts or the actual retail cost of the repair parts to be used in the repair. The labor cost of repairs for purposes of this paragraph shall be computed by using the hourly labor rate and time allocations that are reasonable and customary in the automobile repair industry in the community where the repairs are performed.
 - (b) any motor vehicle, without regard to whether such vehicle meets the preceding 75 percent threshold which :
 - (i) an insurance company acquires ownership of pursuant to a damage settlement, not including a settlement in connection with a recovered theft vehicle, unless such motor vehicle sustained sufficient damage to meet the 75 percent threshold ; or;
 - (ii) the vehicle owner designates as a Salvage Vehicle by obtaining a Salvage Title, without regard to the extent of the motor vehicle's damage and repairs.

1999 Toyota Camry



Stock#: 16490601
Sale Document: CLEAR(Colorado) ←

Loss: COLLISION
Primary: FRONT END
Secondary: MECHANICAL
Key: Present
Start Code: VEHICLE STARTS
Odometer: 202500
Odometer Status: ACTUAL

Fuel Type: Gasoline
Cylinders: 6 Cyl
Engine: 3.0L V6 PFI DOHC 24V NP4
Transmission: Unknown
Drive Line Type: Front Wheel Drive

Vehicle: Automobile
VIN: JT2BF22K7X0198032
VIN Status: OK
Body Style: Sedan
Vehicle Class: Non Luxury Traditional Mid Size
Series: LEXLE
Manufactured in: JAPAN
Exterior Color: BLACK
Interior Color: GRAY

Restraint System: Dual Front Air Bags/active Belts
Air Bags: 2
Driver/Passenger: INTACT / INTACT

Features

CD Player: PRESENT
Estimated Repair Cost: \$3,014 ←
Radio: PRESENT
Tape Deck: PRESENT

Clean Title
Repair is 90.5% of Actual Cash Value

Who Can Bid: Dealer, Dismantler, Exporter, Rebuilder, Scrapper

ACV: \$3,329 ←

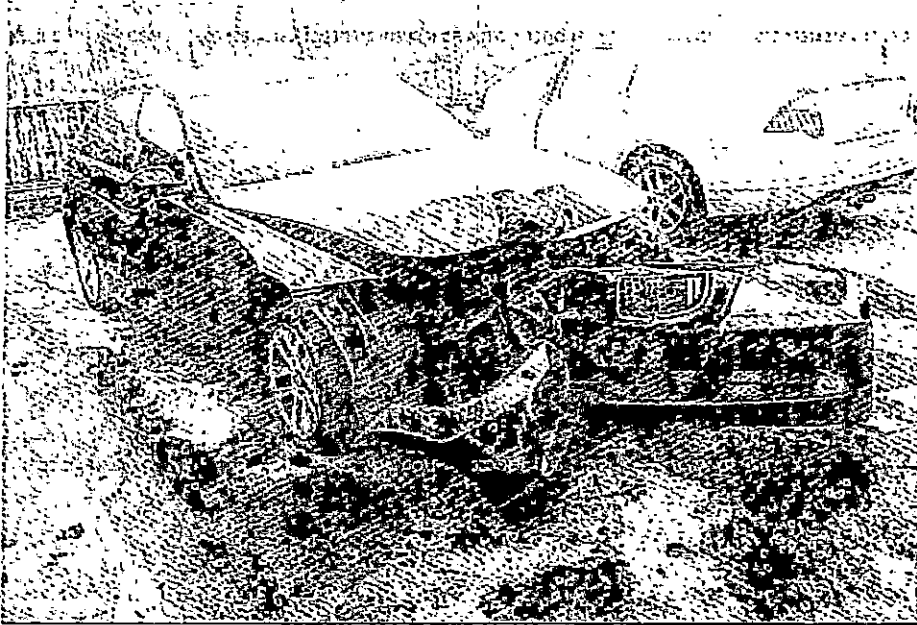
Data Last updated: Feb-23 1 28 AM CST

2006 BMW 325XI

Stock#: 16514218
Sale Document : CLEAR(Colorado)



View



Loss: COLLISION
Primary: FRONT END
Secondary: MECHANICAL
Key: Present
Start Code: WONT START
Odometer: 125407
Odometer Status: ACTUAL

Fuel Type: Gasoline
Cylinders: 6 Cyl
Engine: 3.0L L6 FI DOHC 24V NFI
Transmission: Unknown
Drive Line Type: All-Wheel Drive

Vehicle: Automobile
VIN: WBAVD1352SKV06046
VIN Status: OK
Body Style: Sedan
Vehicle Class: Luxury Traditional Compact
Series:
Manufactured in: GERMANY
Exterior Color: BLACK
Interior Color: BLACK

Restraint System: Dual Air Bags Front And Side /active Belts W/automatic Passenger Sensor

Air Bags: 4
Driver/Passenger: DEPLOYED / INTACT
Left/Right Side: DEPLOYED / DEPLOYED

Features

CD Player: PRESENT
Estimated Repair Cost: \$9,669
Radio: PRESENT
Tape Deck: N/A



Clean Title
Repair is 90% of Actual Cash Value

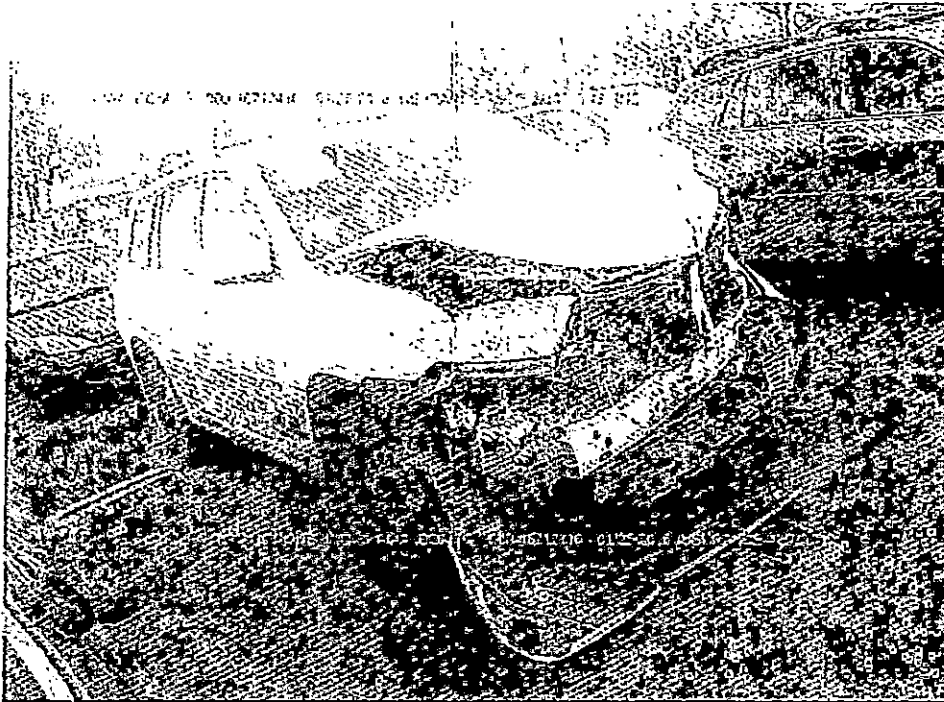
Who Can Bid : Dealer, Dismantler, Exporter, Rebuilder, Scraper

ACV: \$10,735



Data Last updated : Feb-23 12:37 AM CST

2012 Toyota Highlander



Stock#: 16712416

Safe Document: CLEAR(Colorado)
Premium Vehicle Report



Loss: COLLISION
Primary: FRONT END
Secondary: MECHANICAL
Key: Present
Start Code: WONT START
Odometer: 41500
Odometer Status: ACTUAL

Fuel Type: Gasoline
Cylinders: 6 Cyl
Engine: 3.5L V6 FI DOHC 24V NF4
Transmission: Unknown
Drive Line Type: All-Wheel Drive

Vehicle: Automobile
VIN: STDBK3EH6CS156771
VIN Status: OK
Body Style: Wagon
Vehicle Class: Non Luxury Mid Size Cuv
Series: SE
Manufactured in: UNITED STATES
Exterior Color: WHITE
Interior Color: GRAY

Restraint System: Dual Front, Side & Head Airbags,
Rear Head Airbags; Active Belts
Air Bags: 4
Driver/Passenger: DEPLOYED / INTACT
Left/Right Side: INTACT / INTACT

Features

CD Player: PRESENT
Estimated Repair Cost: \$22,735
Radio: PRESENT
Tape Deck: N/A



Clean Title
Repair is 89.8% of Actual Cash Value

Who Can Bid: Dealer, Dismantler, Exporter,
Rebuilder, Scrapper

ACV: \$25,307

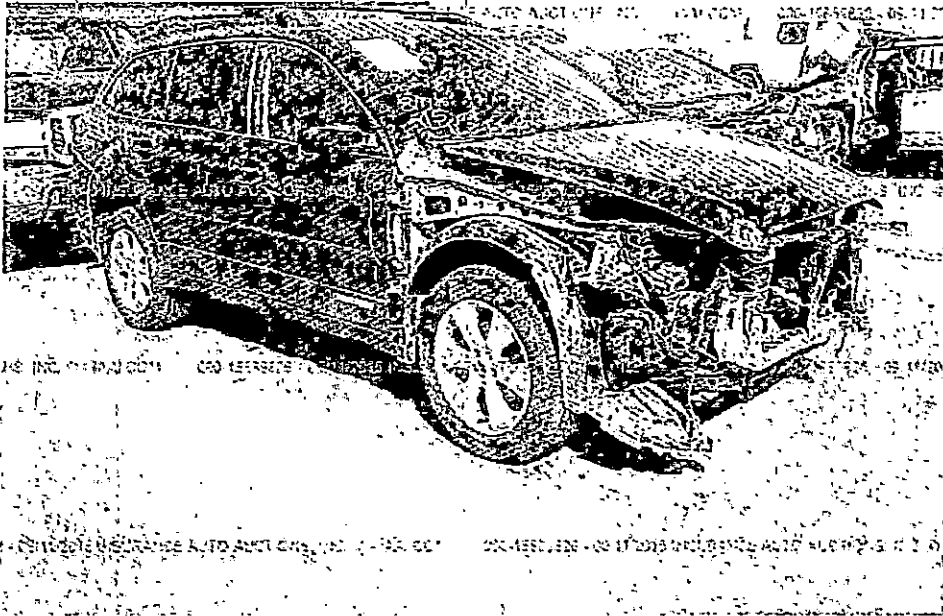


Data Last updated: Feb-23 1:28 AM CST

2012 Subaru Outback

View

Stock#: 15889826
Sale Document: CLEAR(Colorado)
Premium Vehicle Report



Loss: COLLISION
Primary: FRONT END
Secondary: SUSPENSION
Key: Present
Start Code: VEHICLE STARTS
Odometer: 43379
Odometer Status: ACTUAL

Fuel Type: Gasoline
Cylinders: 4 Cyl
Engine:
Transmission: Unknown
Drive Line Type: All-Wheel Drive

Vehicle: Automobile
VIN: 4S4BRCKC8C3272086
VIN Status: OK
Body Style: Wagon
Vehicle Class: Non Luxury Mid Size Cuv
Series: 2.5I LIMITED
Manufactured in: UNITED STATES
Exterior Color: GRAY
Interior Color: BLACK

Restraint System: Dual Front, Side & Head Airbags,
Rear Head Airbags: Active Belts

Air Bags: 4
Driver/Passenger: DEPLOYED / INTACT
Left/Right Side: INTACT / INTACT

Features

CD Player: PRESENT
Estimated Repair Cost: \$17,884
Radio: PRESENT
Tape Deck: N/A



Clean Title
Repair is 81.1% of Actual Cash Value

Who Can Bid: Dealer, Dismantler, Exporter,
Rebuilder, Scrapper

ACV: \$22,136



Data Last updated: Feb-23 1 21 AM CST