



# South Academy Highlands: Pre-Construction



0 250 500 1,000 Feet

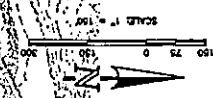
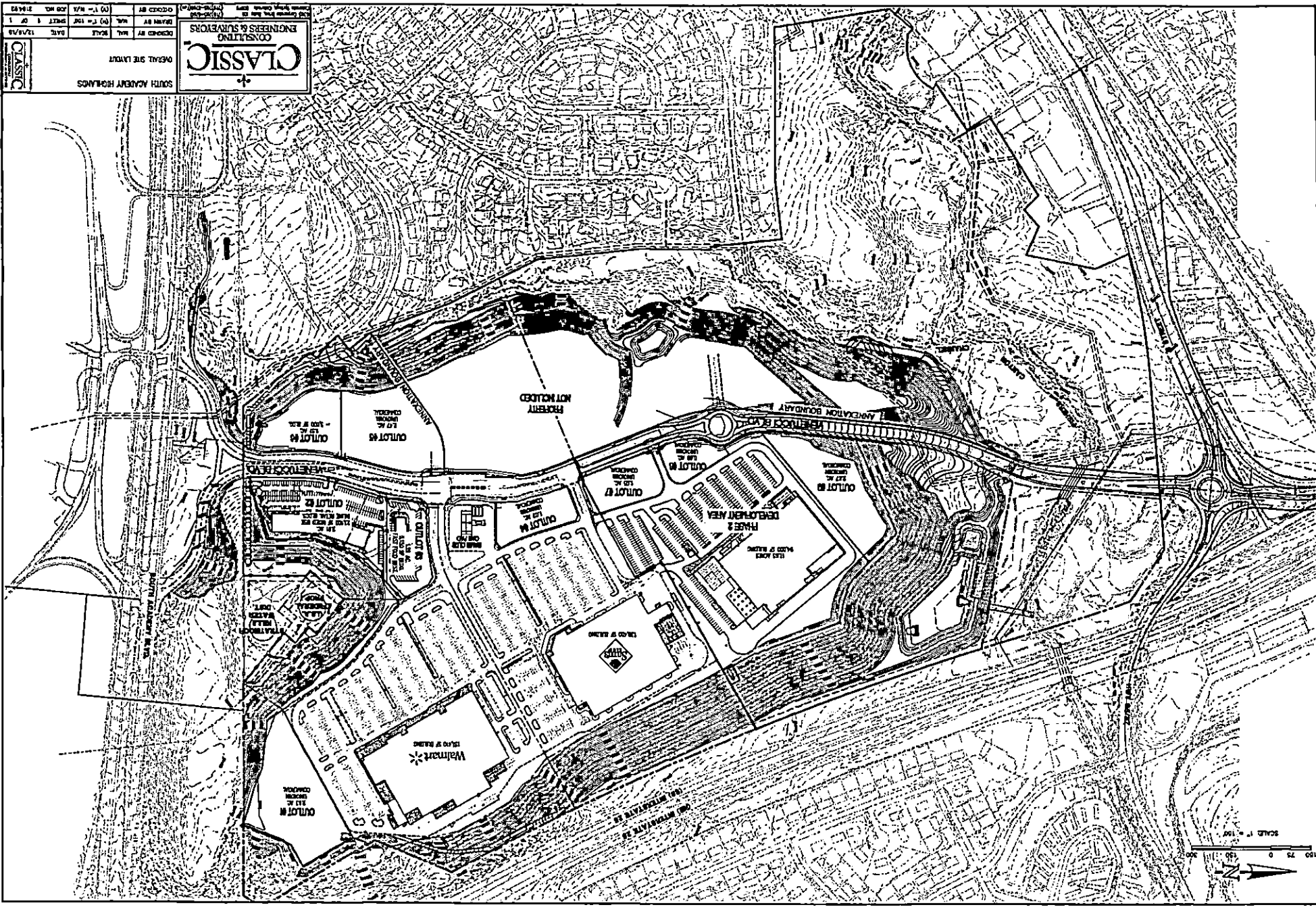


South Academy Highlands Imagery Source: NAIP Imagery 2013



Date: 3/17/2016

CLASSIC	DATE	12/15/13
	DESIGNED BY	WAL
	SCALE	AS SHOWN
	SHEET	1 OF 1
SOUTH ACADEMY HIGHLANDS		
OVERALL SITE LAYOUT		
<b>CLASSIC</b> CONSULTING ENGINEERS & SURVEYORS 10000 W. 11th Ave., Suite 100 Denver, CO 80233 (303) 751-1100 www.classic-engineers.com		





# Department of Revenue



Home

Sales Tax Rates

Help

## CITY AND COUNTY TAX RATES

Select a City

- OR -

Select a County

The state sales tax rate is 2.9%. This application will display only those cities that have a sales tax, and does not have full information on local exemptions or use tax.

[Click here for a complete list of all sales and use tax rates.](#)

### FOUNTAIN:

The city sales tax rate is 3.75% and the use tax rate is 2.0%. Fountain is in El Paso County.

### EL PASO COUNTY:

The county sales tax rate is 1.23%. The Pikes Peak Rural Transportation Authority imposes a sales tax of 1.0% in the El Paso county limits except the municipalities of Calhan, Fountain, Monument, Palmer Lake and the Commercial Aeronautical Zone in the City of Colorado Springs. This transportation authority sales tax is reported on the sales tax return in the special district column.

State Website

Revenue Website

Taxation Website

Privacy and Security Policy

Contact Us





## Promises Made, Promises Kept.

Completed in November 2008, the Austin Bluffs Parkway Interchange at Union Boulevard reduces congestion and accidents by streamlining east-west and north-south traffic.



**Baptist Road Widening:** Baptist Road was widened from I-25 east to Tari Drive (shown above). A new project (currently in the design phase) will widen Baptist Road from I-25 west to Mitchell Avenue, including the construction of a roundabout at the Baptist Road/Old Denver Highway Intersection and a grade-separated crossing at the railroad tracks and Monument Creek north of the existing road.



El Paso County's South Academy Boulevard project, completed in 2010, improves the access to Pikes Peak Community College and Fort Carson.



The Manitou Avenue Rehabilitation Project, completed in May 2013, was a multi-million-dollar PPRTA/federal-grant-funded project that involved transportation and pedestrian improvements, including replacing pavement and sidewalks, landscaping, and installing underground drainage and utilities.