

ANS Boat Interdictions

ZEBRA AND QUAGGA MUSSELS



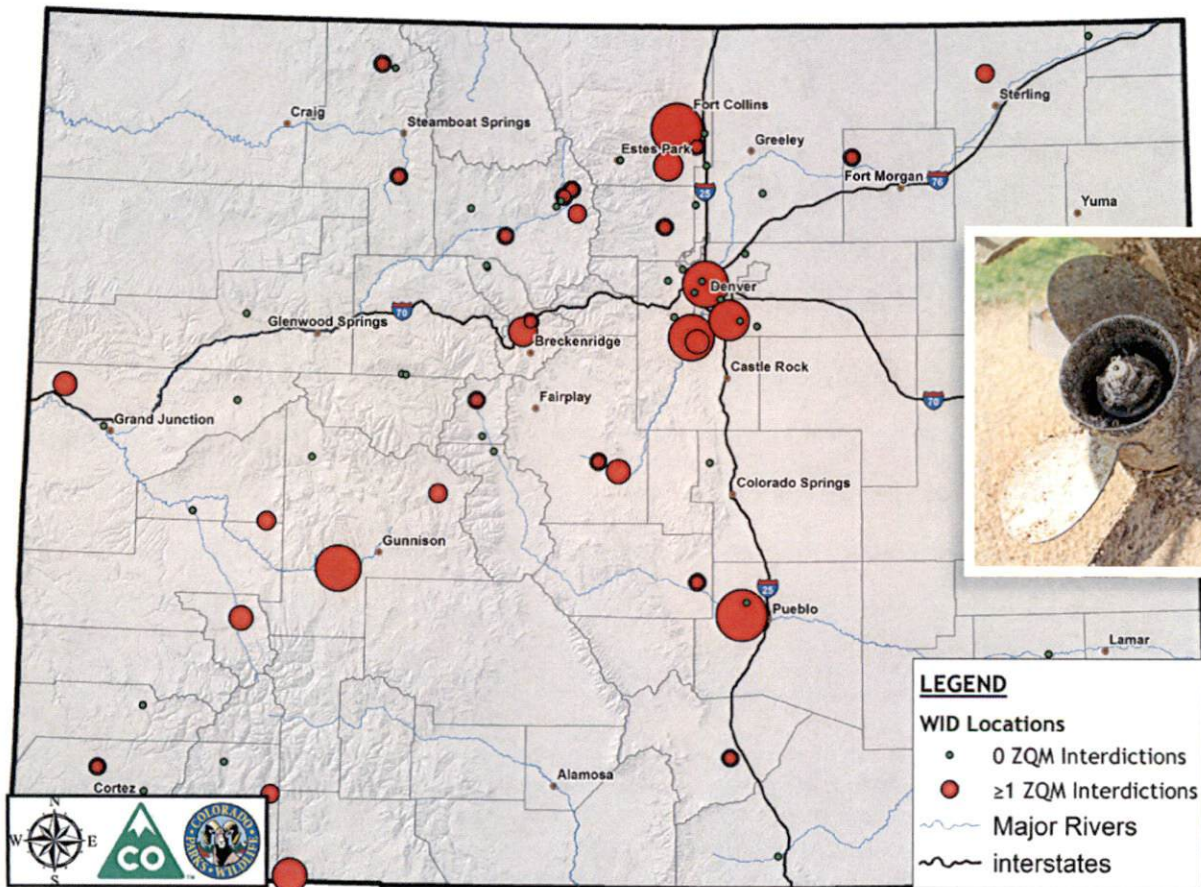
Invasive mussels are being transported on watercraft!

Colorado Parks and Wildlife coordinates a broad multi-jurisdictional watercraft inspection and decontamination network to protect waters from invasive zebra and quagga mussels and other invasive species. Recreational watercraft is the main vector of introduction for this harmful invader. Colorado is a headwater state and there are no mussels upstream. State certified inspectors repeatedly intercept watercraft infested with mussels.

A total of 144 boats with attached adult zebra or quagga mussels have been intercepted coming into

Colorado's waters from out of state at watercraft inspection and decontamination stations. The infested watercraft were intercepted at Blue Mesa, Boulder Marine, Boulder Reservoir, Boyd Lake, Canon Marine, Carter, Chatfield, Cherry Creek, Crawford, Denver CPW Office, Dillon Marina, Eleven Mile, Frisco Bay Marina, Granby, Grand Junction CPW Office, Great Lakes Marine, Highline, Horsetooth, Jackson, Lathrop, McPhee, Navajo, North Sterling, Pueblo, Ridgway, Shadow Mountain, Stagecoach, Steamboat Lake, Strontia Springs, Taylor Park, Turquoise, Vallecito and Williams Fork.

Zebra and Quagga Mussel Positive Interdiction Sites in Colorado



Map Produced by:
Colorado Parks and Wildlife Invasive Species Program, December 2017

0 10 20 40 60 80 Miles

ALL PHOTOS © ELIZABETH BROWN, CPW INVASIVE SPECIES PROGRAM UNLESS OTHERWISE INDICATED



© PHOTO BY MINNESOTA DEPARTMENT OF NATURAL RESOURCES

Where are the infested mussel boats coming from?

It is often difficult to determine the exact location of infestation due to the frequency of boating use. Also, numerous interceptions are used boat purchases in which the previous boating history is not known. For these reasons, the source of infestation for more than twenty interdicted

watercraft is unknown. The remainder of the infested vessels were coming from Arizona, California, Illinois, Indiana, Iowa, Kansas, Michigan, Minnesota, Mississippi, New York, Nevada (Lake Mead), Oklahoma, Ohio, Texas, Utah (Lake Powell), Wisconsin, and the Great Lakes.

