

Natural Resources -- Parks and Wildlife
Chatfield SFU - Centennial Water & Sanitation District - Water Lease

Douglas and Jefferson Counties

0 acres

Chatfield Reservoir and the Chatfield SFU, in the southwestern Denver metropolitan area

Action Required

Recommend support for the perpetual water lease for the Chatfield Reservoir Storage Reallocation Project.

Questions and Responses

None.



COLORADO

Parks and Wildlife

Department of Natural Resources

Capital Development Committee December 2022 —Property Transaction Proposal

Department of Natural Resources
Division of Parks and Wildlife

Action Requested	Pursuant to C.R.S. 33-1-105(3)(a) and C.R.S. 33-10-107(2) recommend support to the Colorado Parks and Wildlife Commission for the Division of Parks and Wildlife’s proposal to lease water.
-------------------------	---

General Information	
Project Name	Chatfield SFU - Centennial Water & Sanitation District - Water Lease
Number of acres	N/A
Location	Chatfield Reservoir and the Chatfield SFU, which are in the southwestern Denver metropolitan area near where Jefferson, Douglas, and Arapahoe County share a common boundary point near Wadsworth Blvd and C-470.
County	Douglas County and Jefferson County

Costs / Source of Funding		
Purchase Price	\$0.00	
Annual Monitoring and Operation Costs	No annual maintenance and operational costs associated with the lease. An existing agreement requires CPW to cover related annual operation and maintenance costs on a portion of the storage space that this leased water will be used to fill.	Any operation costs will be funded from the Wildlife Operations Line Item under the Division Operations Group in the Long Bill.
Development Costs	N/A	

* The Division may alter the source of funds for individual acquisitions based on circumstances that arise in the time period prior to closing.

Summary of Proposal:

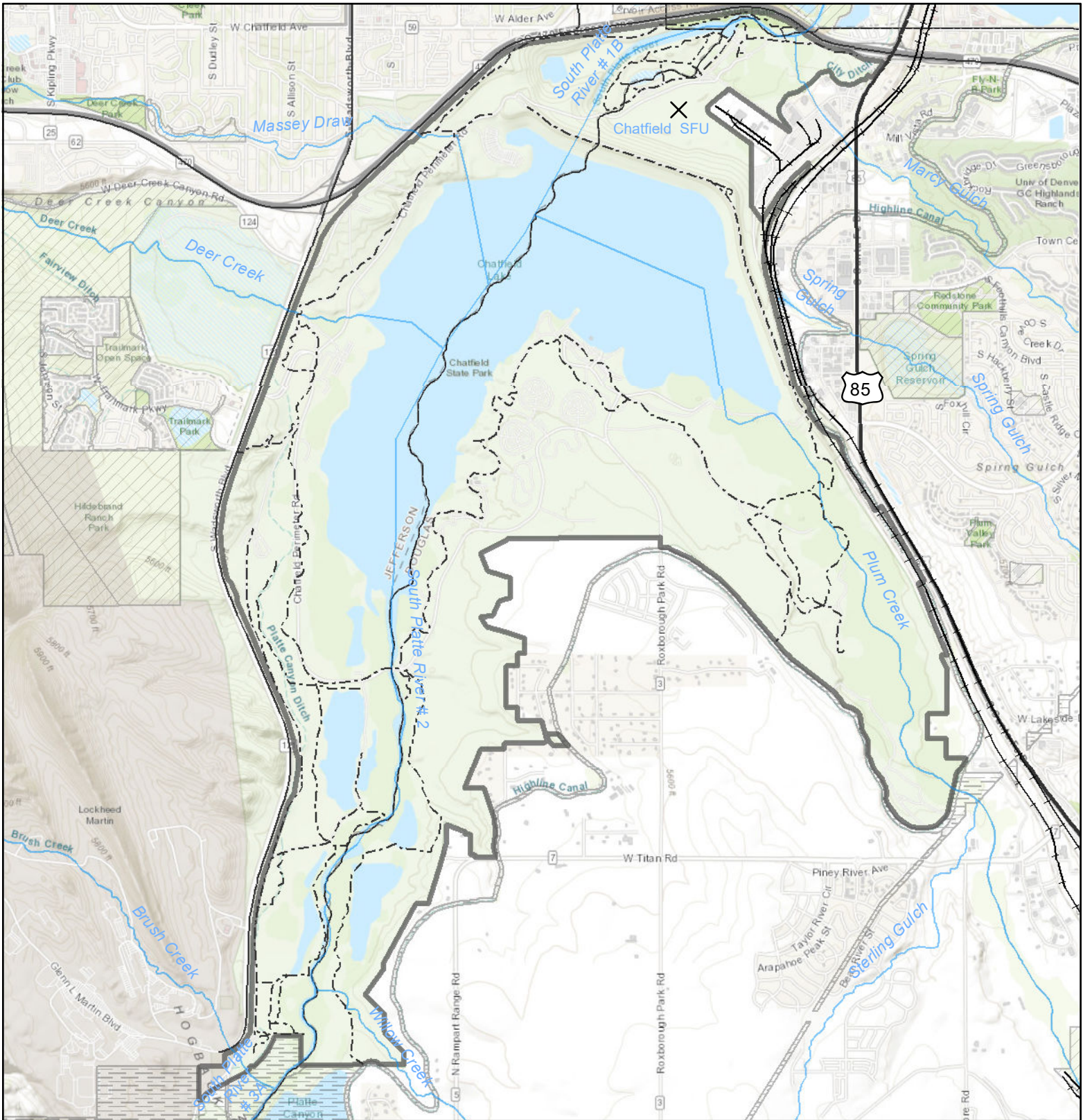
CPW would like to enter into a perpetual water lease with the Centennial Water & Sanitation District. The purpose of the lease is to permit the fill and release of water from the Environmental Pool in the Chatfield Reservoir Storage Reallocation Project (Reallocation Project) when the South Platte River is experiencing low flows. Centennial Water & Sanitation District holds the water rights decreed in Case No. 84CW0411, and CPW will lease a portion of such water rights to fill, and make releases from, the Chatfield Environmental Pool to benefit the South Platte River in accordance with the Reallocation Project agreements.

Water releases will help alleviate low-flow conditions in the South Platte River below the Chatfield SFU. This will benefit the fish and wildlife populations along the South Platte River with the secondary benefit of aiding the Chatfield SFU water supply.

CPW is working with the CWCB, Chatfield Reservoir and Mitigation Company, US Army Corps of Engineers, Centennial Water & Sanitation District, and various other water users to implement fish and wildlife mitigation for the Reallocation Project, including the development of an Environmental Pool to help alleviate low stream flows in the South Platte River below Chatfield Reservoir. Implementing the proposed lease would help achieve the mitigation goals of the parties.

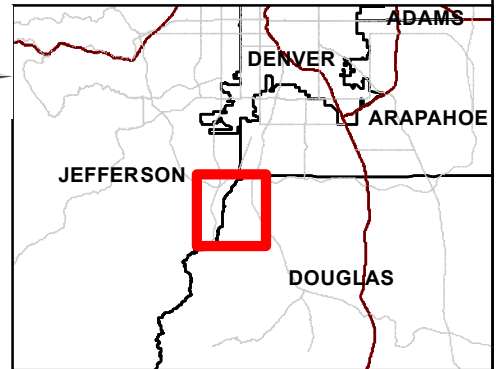
Attachments:

- Map
- Concurrence letter
- Pictures

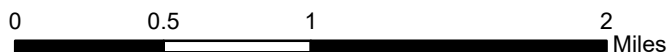


GIS Unit

Chatfield SFU - Centennial Water Lease Project # 22-047 Douglas & Jefferson Counties



- Chatfield State Park
- Denver Water Board
- State Park Trails
- County Property





COLORADO

Parks and Wildlife

Department of Natural Resources

Northeast Regional Office
6060 Broadway
Denver, CO 80216
P 303.291.7227

October 6, 2022

Douglas County Commissioners
100 Third St
Castle Rock, CO 80104

RE: Colorado Parks and Wildlife Concurrence Letter

Dear County Commissioners,

We are presenting you this letter in hopes of gaining your support for a perpetual water right lease between Centennial Water & Sanitation District and Colorado Parks & Wildlife (CPW). The proposed water right lease would be used to provide a water supply to fill the Environmental Pool in Chatfield Reservoir. CPW is responsible for managing the Environmental Pool which has been set aside to mitigate anticipated impacts to fish, wildlife, and recreation resources caused by the Chatfield Storage Reallocation Project. The leased water will be stored in the Environmental Pool and subsequently released at times when the South Platte River is experiencing low flows, with a goal of maintaining minimum streamflow in the South Platte below Chatfield Reservoir. The Chatfield State Fish Unit (SFU) is situated immediately below the Chatfield Dam and the leased water in the Environmental Pool can also offer a secondary benefit to the Chatfield SFU. The leased water can provide a critical component of ensuring a sufficient water supply for the Chatfield SFU and planned future hatchery expansion.

This real estate proposal exceeds 25 years therefore we are required to take this to the Capital Development Committee at the State Legislature. If you either support, or do not object to this water right lease, please sign at the bottom of this letter or create your own response letter and return to me.

Sincerely,

Matt Martinez
Area Wildlife Manager
Colorado Parks and Wildlife

We support/do not object to this proposal.

Date: October 11, 2022

Abe Laydon, Chair
Board of County Commissioners



South Platte River #1



South Platte River #2