



Wildfire Matters Review Committee

August 12, 2021

About Xcel Energy

Serving eight states

- 3.6 million electricity customers
- 2 million natural gas customers

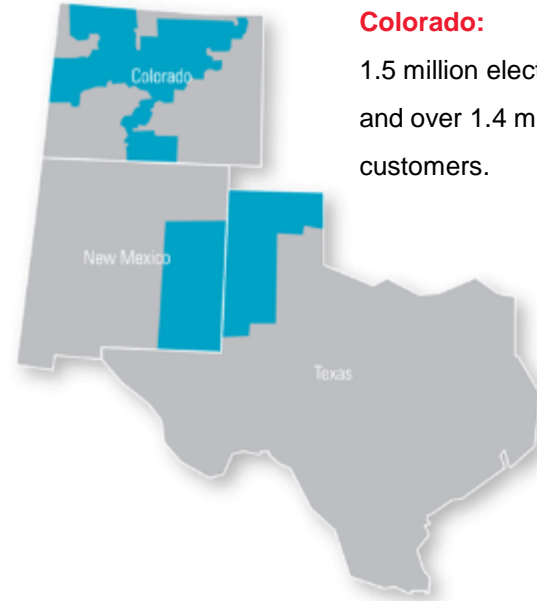
Nationally recognized leader

- Wind energy
- Energy efficiency
- Carbon emissions reductions
- Innovative technology



Colorado:

1.5 million electric customers
and over 1.4 million natural gas
customers.





**2.9 million Coloradans are now living in areas of risk of wildfire.
That's roughly half the state's population living in the
wildland-urban interface.**

2020 Fire Season – Summary



Pine Gulch wildfire, July 31-September 23, 2020, 139,000 acres

Nationwide

- **58,258** wildfires burned **10,274,679** acres in the United States
- 3.5 million more acres burned in 2020 than the 10-year average

Colorado

- More than 625,000 acres burned across the state
- Three of the largest recorded fires in history

Xcel Energy

- Monitored 146 wildfires (6/1-12/31)
- Significant damage to Distribution and Transmission assets
- Gas customers impacted

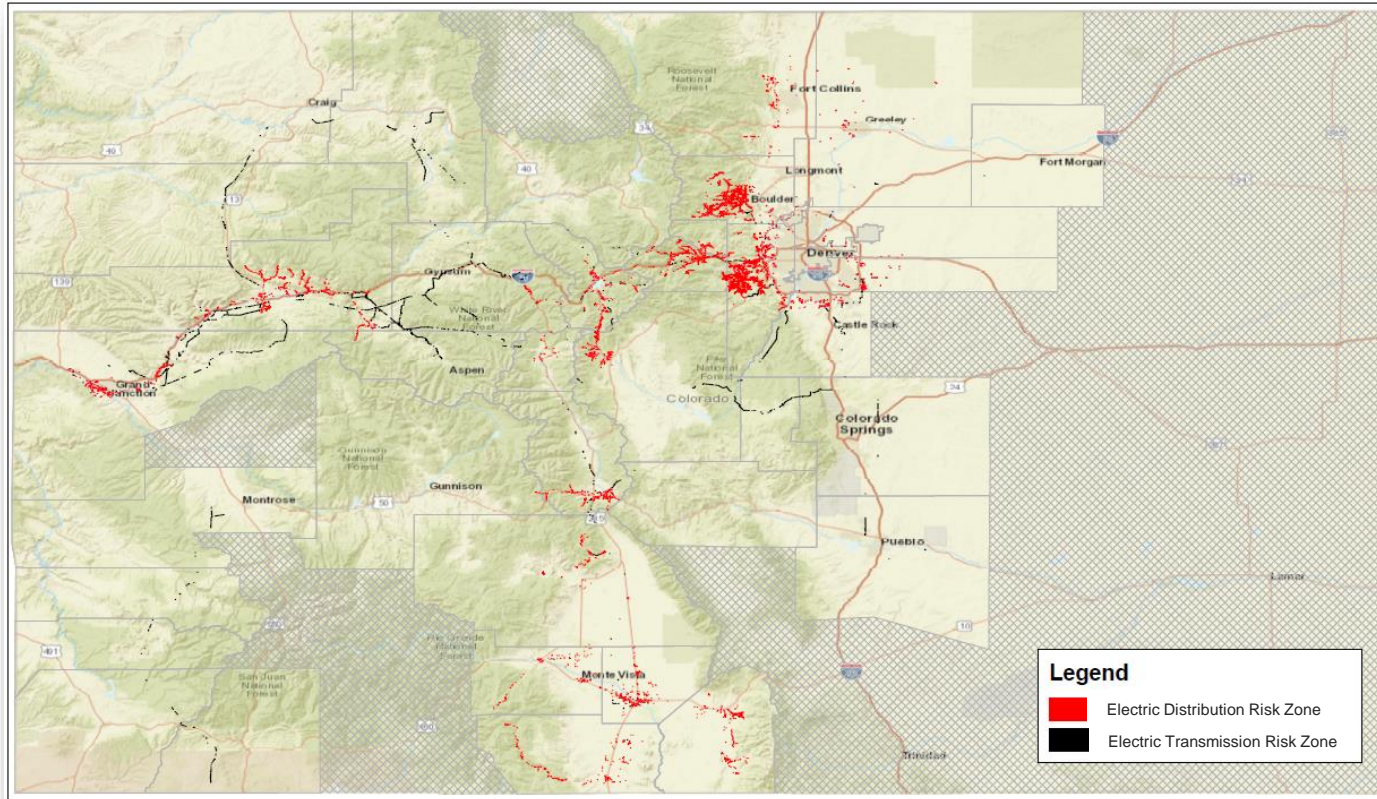
Program Goals & Key Components

Minimize risks that could lead to a wildfire

- Enhancing utility practices for inspecting and hardening assets
- Increasing operational flexibility to manage elevated fire threat conditions
- Incorporating emerging technologies
- Measuring program progress and efficacy



Colorado Wildfire Risk Map



Drone Inspections

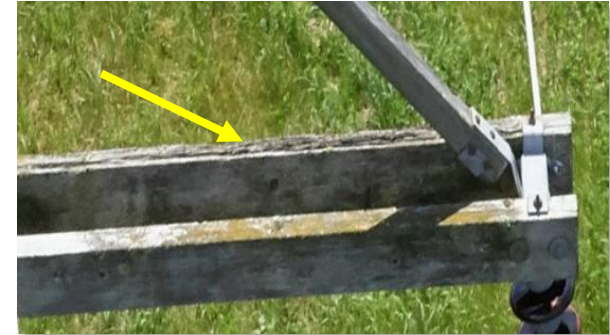
- Drone inspections allow top-down perspective
- Inspection data are utilized to drive repairs and replacements



Drone inspection



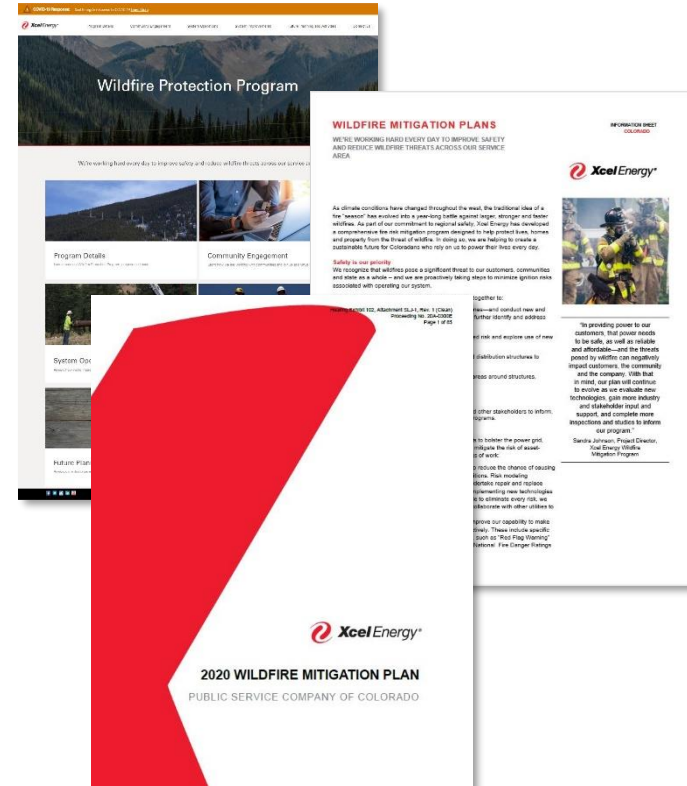
Insulator inspection



Decay on top of crossarm

Program Execution

- Continue work underway
- Enhance industry and community partnerships
- Advance operational initiatives



Questions?



www.xcelenergywildfireprotection.com

Sandra Johnson, XE, Wildfire Mitigation

Sandra.L.Johnson@xcelenergy.com