



Water Resources & Agriculture Review Committee

August 24, 2022

Wildfire Restoration Update

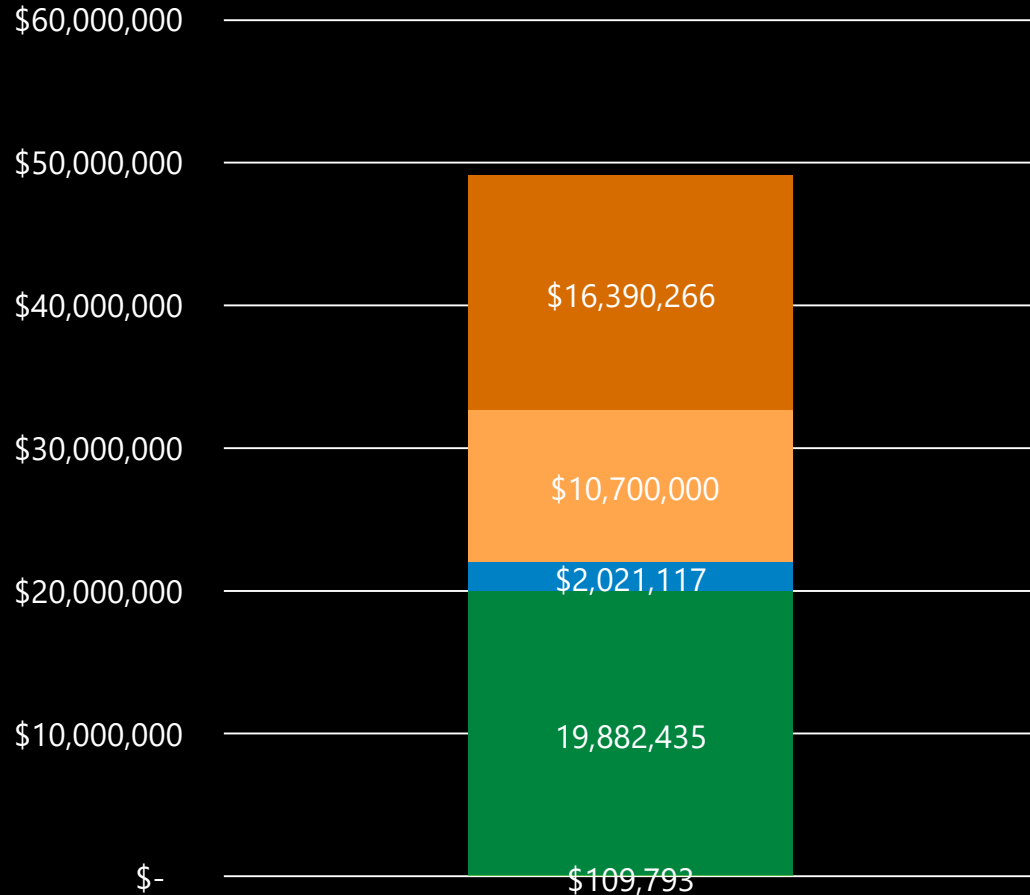
Northern Water

Total Post-Fire Recovery Costs (Area A)

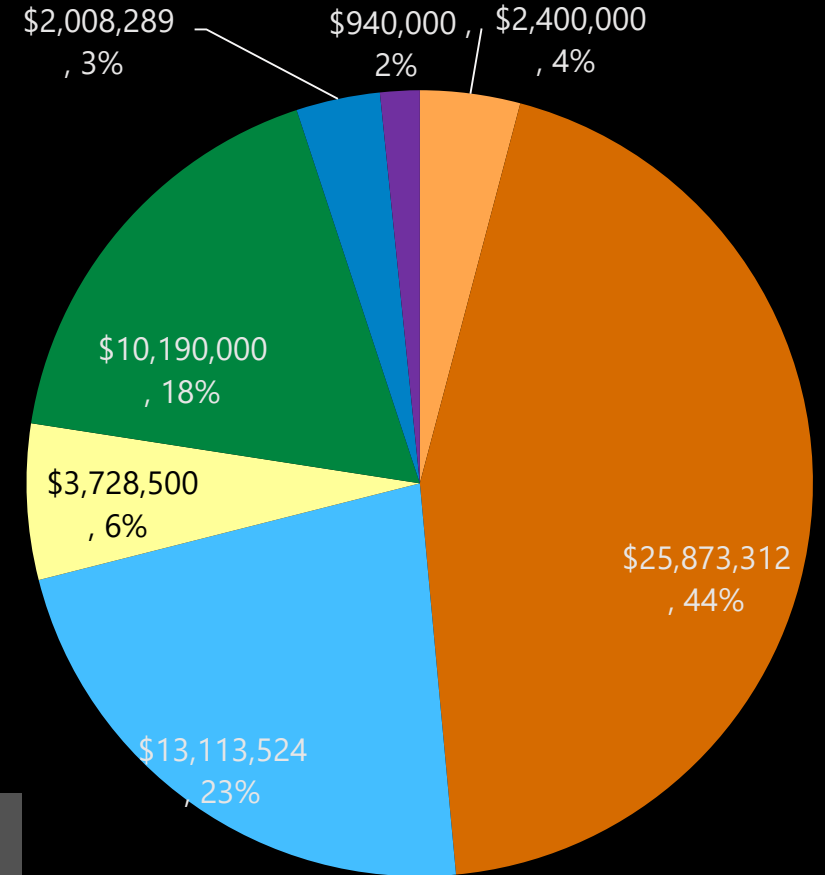
**Total Post-Fire
Watershed
Restoration
Cost
\$49,103,611**

East Troublesome Post-Fire Watershed Restoration Funding Commitments

**Total Post-Fire
Watershed
Restoration
Funding
Commitments
\$57,313,626**



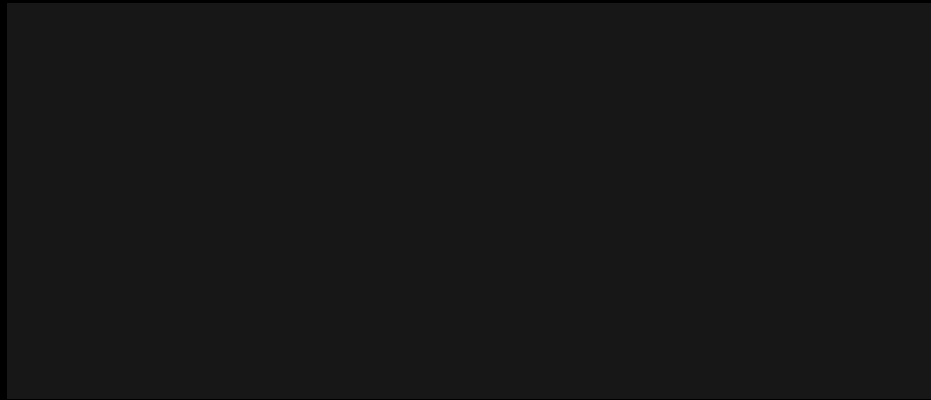
- EWP Expended to-date Total (Actual)
- EWP Planned 2022 Season (Estimate)
- NW Out-of-Pocket
- Mulching 2022 (Completed)
- Point Treatment Planning



- NRCS TA
- NRCS FA
- CWCB
- BLM
- USFS
- NW
- BOR



Federal Lands Aerial Mulching



East Troublesome Fire Recovery Mulching Dashboard



Overall Mulching
7493.1
Acreage

Overall Mulch Uni
130
Count

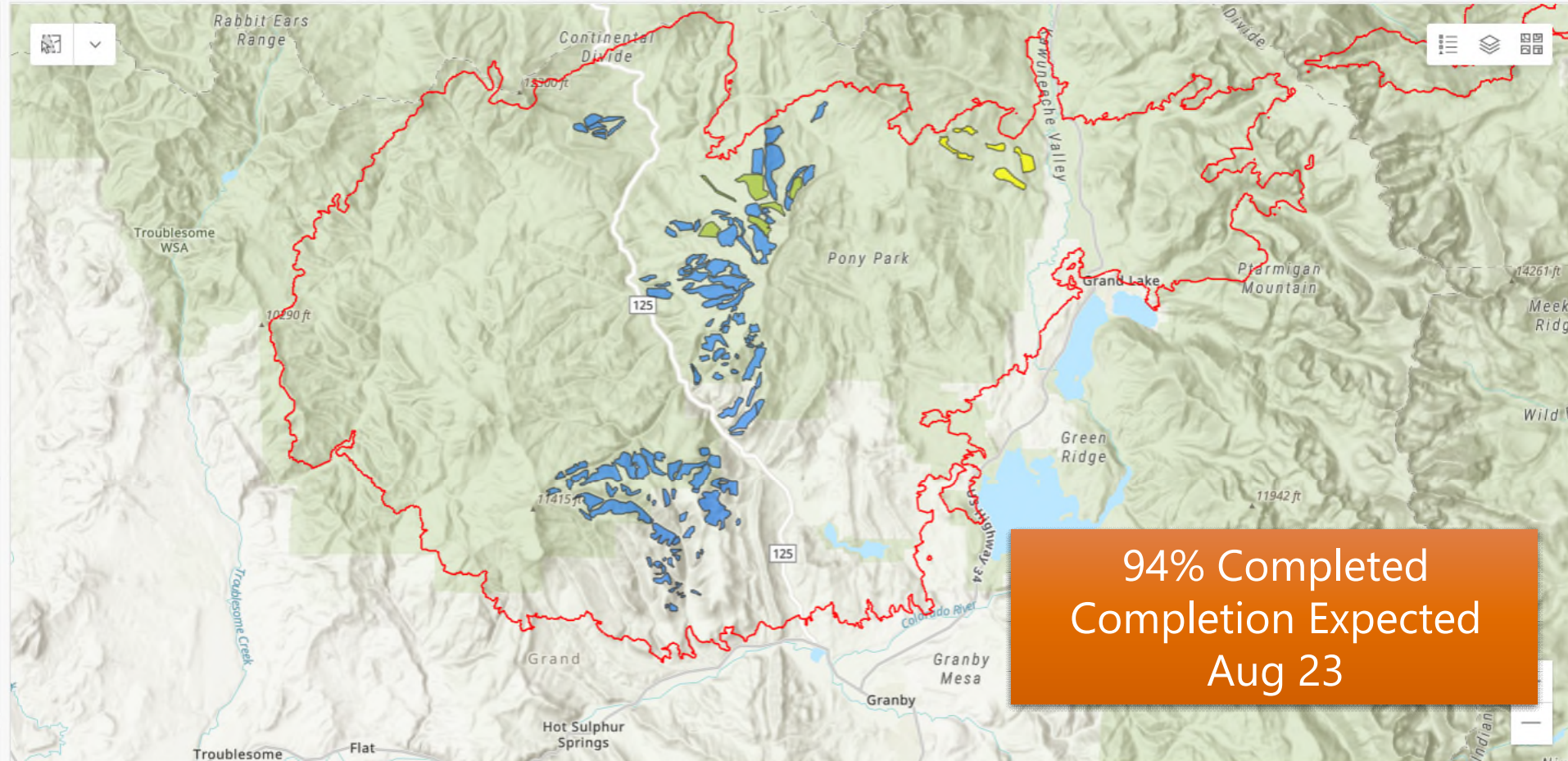
Acreage to be mulched
438.44
Acreage

Units needing validate
6
Count

Acreage needing validate
600
Acreage

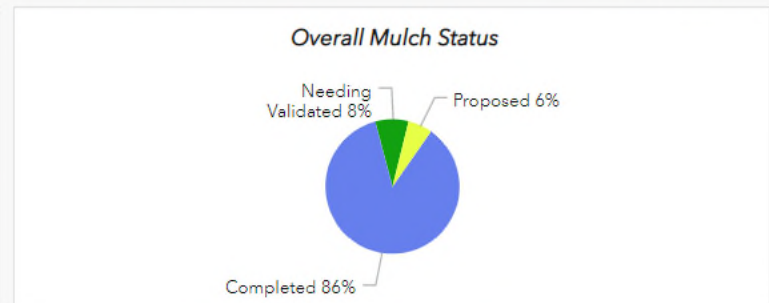
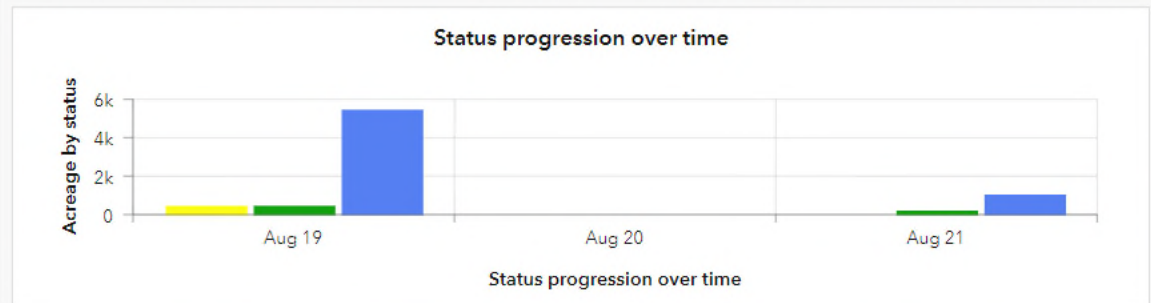
Completed Mulch Unit
118
Count

Completed Mulch
6454.67
Acreage



Esri, NASA, NGA, USGS | Grand County, CO, Esri, HERE, Garmin, SafeGraph, METI/NASA, USGS, Bureau of Land Management, EPA, NPS, USDA

Powered by Esri





Highway 125 Emergency Work

- Hall Creek: Work to protect cabin and culvert, debris removal, along.
- Debris removal along Highway 125 to started week of 8/1.

Willow Creek Reservoir



Test pits at Willow Creek Reservoir Berm location for geotechnical investigation 7/22



Willow Creek Inlet
Debris Boom Access
Road Repair and
O&M 7/27

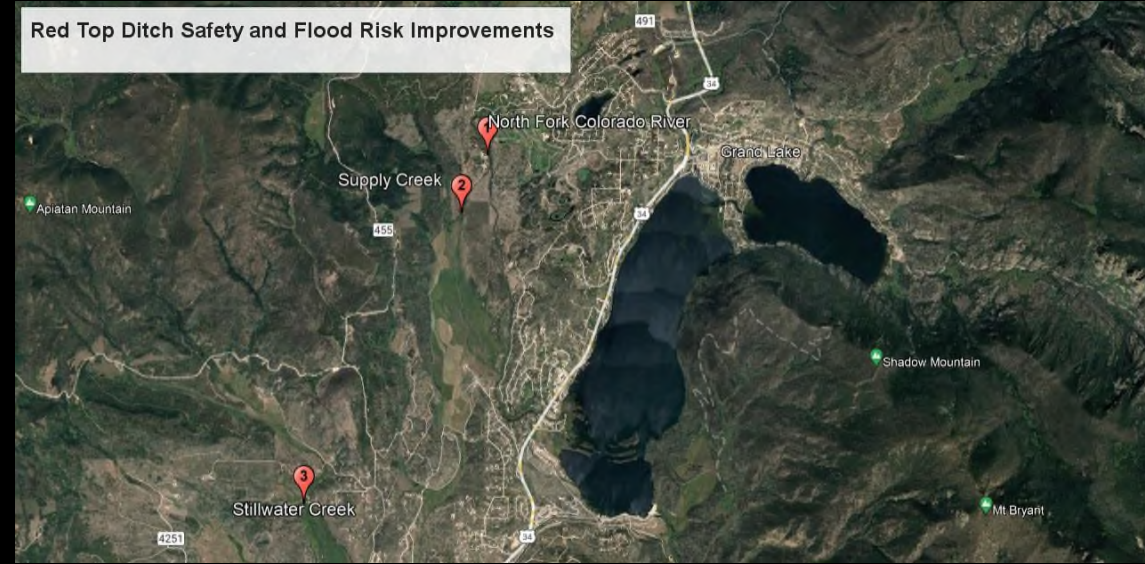
EWP Projects



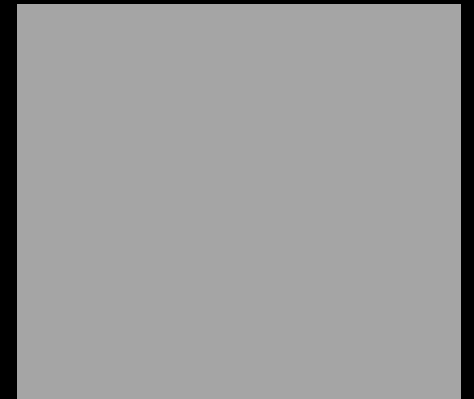
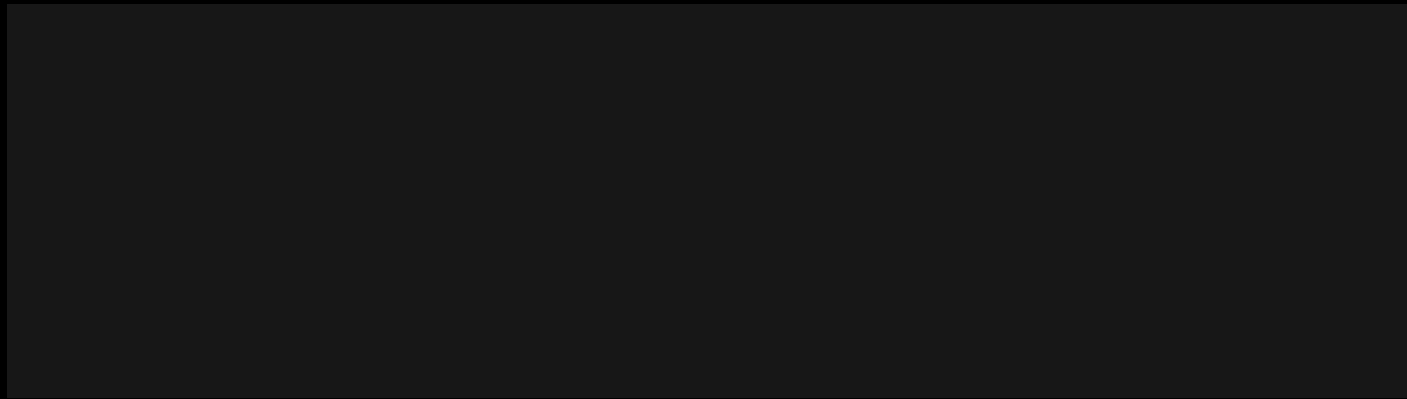
PROPOSED EARTHEN BERM SITE
NW ETF EWP
FIGURE 1

PATH: M:\04\NFL\BPF\028_P\RMED021021-04_NORTHERNWATER ETF_RECOVERY_COOKS7.1_WORK\B_PROGRESS\MAP_DOC\GIAVIEWP_3122\K_C\LAZY\PROPOSEDEARTHENBERM.KXD - USER: C2WIKER - DATE: 4/8/2022

Red Top Ditch Safety and Flood Risk Improvements



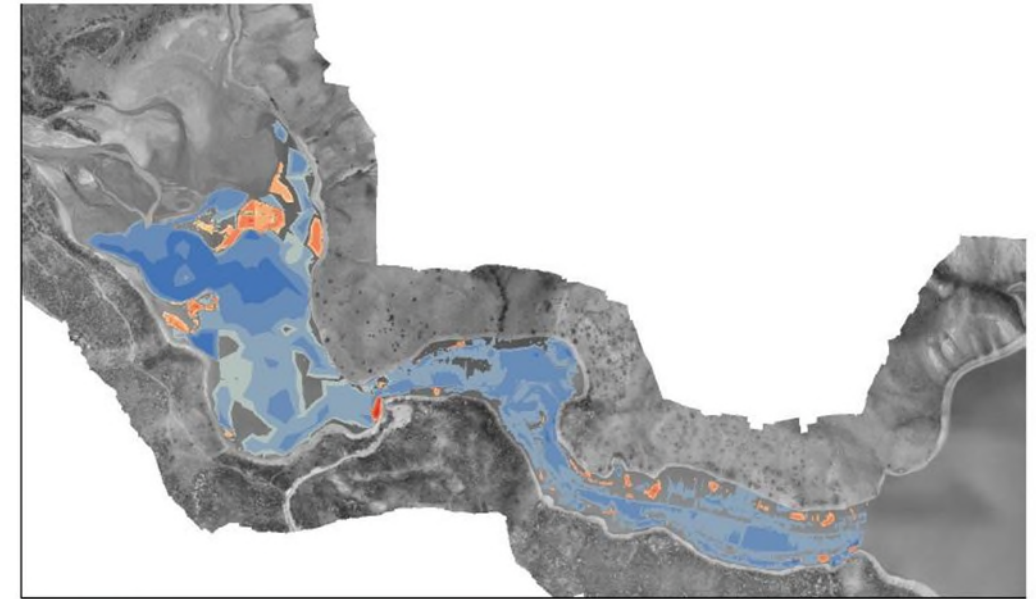
Post-Fire Impacts



Results

Timeframe	Annual Volume Lost
1969 - 2020 Annual Average	14.8 acre-ft
2020 - 2021 without Delta	18.1 acre-ft
2020 - 2021 Delta Only	36.6 acre-ft
2020 - 2021 Combined Survey	51.1 acre-ft

3.45 x baseline



Legend

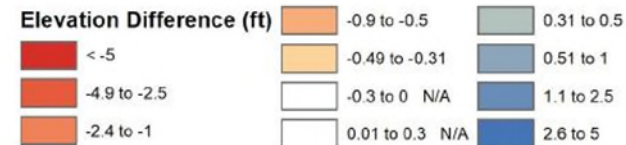


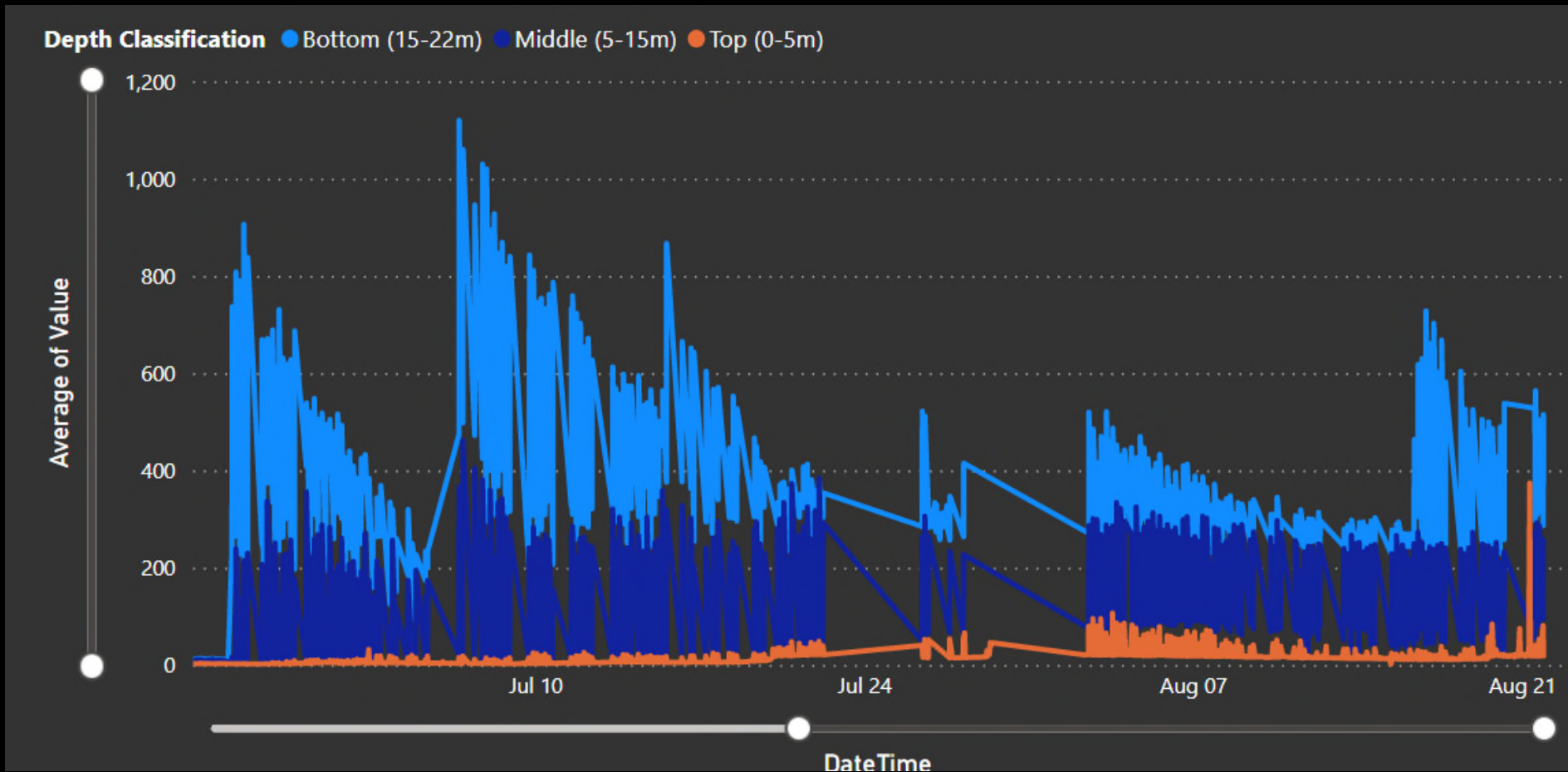
Figure 2: Change detection, or DEM of Difference, of the updated 2021 DEM (with Ice Survey 2022 data) and 2020 bathymetric DEMs calculated with spatially varying uncertainty and 95% confidence level.

Aug 2022
Bathymetric Survey
Underway

On-Going Impacts

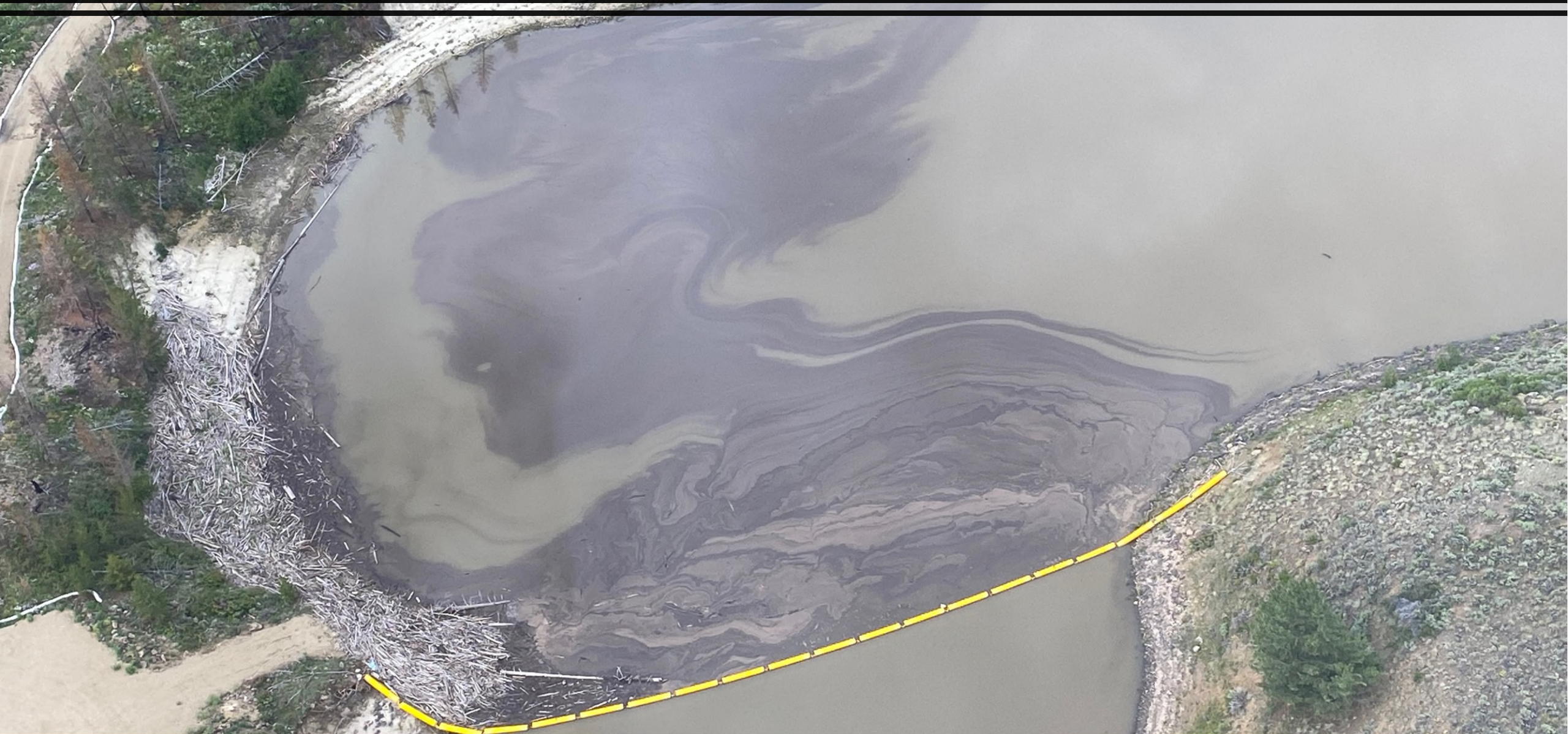


Willow Creek Reservoir Turbidity (NTU)



> 100 not
treatable

Willow Creek Reservoir August 22, 2022





CR 219 (Drowsy Water by Hwy 40m West of Hwy 125) August 20



Source: grand County Sheriff

Take- Aways



Critical to have access to a portfolio of funding



Delayed funding commitments hinders planning and project implementation



CWCB funding essential to fill gaps from other programs



Multi-year effort



**WORK
IN PROGRESS**

**To be
continued**



Thank you

Esther Vincent, PE
Environmental Services Director
evincent@northernwater.org
970-622-2356