



Cameron Peak Fire Recovery & Restoration

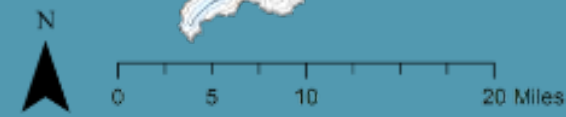
**Hally Strevey, Executive Director, Coalition for the Poudre
River Watershed**

hallys@poudrewatershed.org



PRESENTATION OVERVIEW

- About C P R W
- Cameron Peak Fire Timeline & Overview
- Poudre Wildfire Recovery Experience
- Cameron Peak Fire Restoration
- Q & A



OUR MISSION: To improve & maintain the ecological health of the Poudre River Watershed through community collaboration.

High Park Fire Coalition



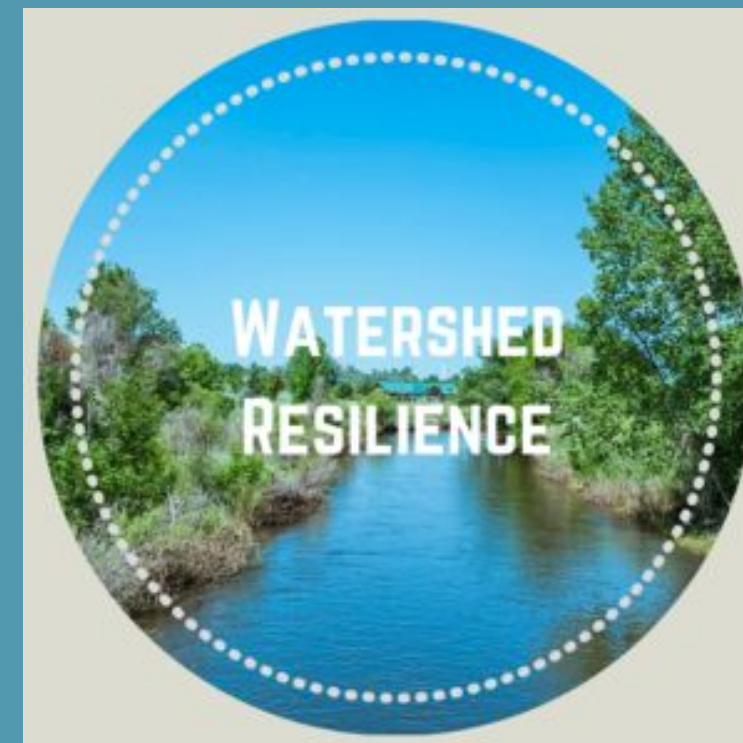
- **Initially High Park Restoration Coalition – informal group of over 20 entities**
- **Formalized in May 2013**

Current Board:

- **City of Fort Collins Utilities**
- **City of Greeley Water & Sewer**
- **Larimer County**
- **Rocky Mountain Flycasters/ Trout Unlimited**
- **Local Landowner**
- **Carestream Health**
- **Mighty Arrow Foundation**
- **Retired USFS**

CPRW Focus Areas

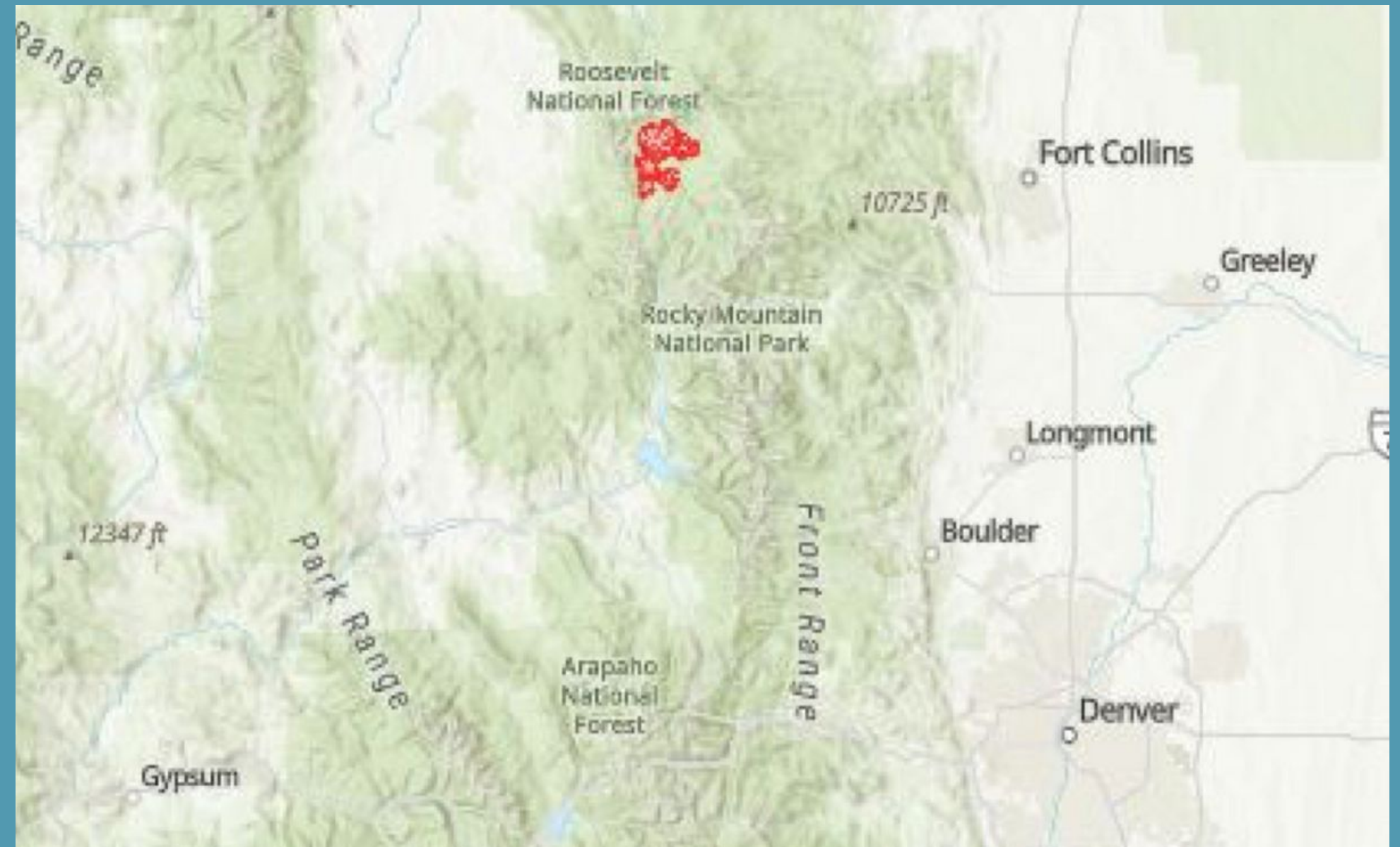
- Collaborate
- Plan
- Restore
- Watch



CAMERON PEAK FIRE TIMELINE

August 13, 2020

The Cameron Peak Fire ignited in the Upper Poudre Watershed near Cameron Pass between Cameron Peak and Chambers Lake.



Between September 4 and September 7, 2020, the fire grew over 78,000 acres.



Sept. 4th, 2020



Sept. 7th, 2020



October 13th,
2020



October 19th, 2020
(Fire reaches 200,000
acres)

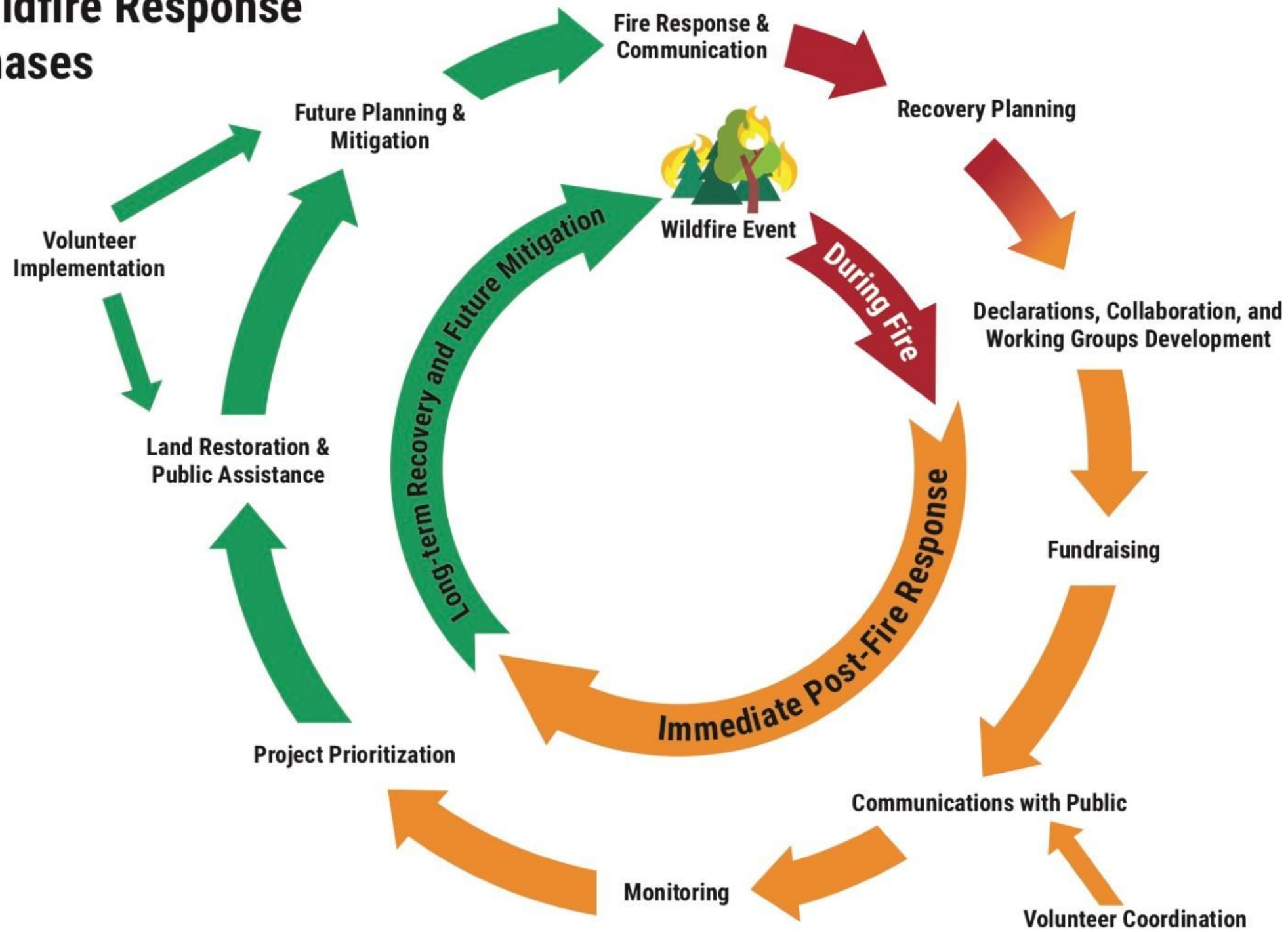
100% contained on December 2nd, after burning 208,913 acres. The fire was declared controlled on January 12th, 2021.

Wildfire Response Phases & Stakeholders Involved

Fire Response & Communication	Recovery Planning	Declarations / Collaboration	Fundraising	Communications with Public
Monitoring	Project Prioritization	Land Restoration & Public Assistance	Future Planning & Mitigation	

CPF Recovery Process

2020 Larimer County Wildfire Response Phases



CPF WILDFIRE IMPACTS

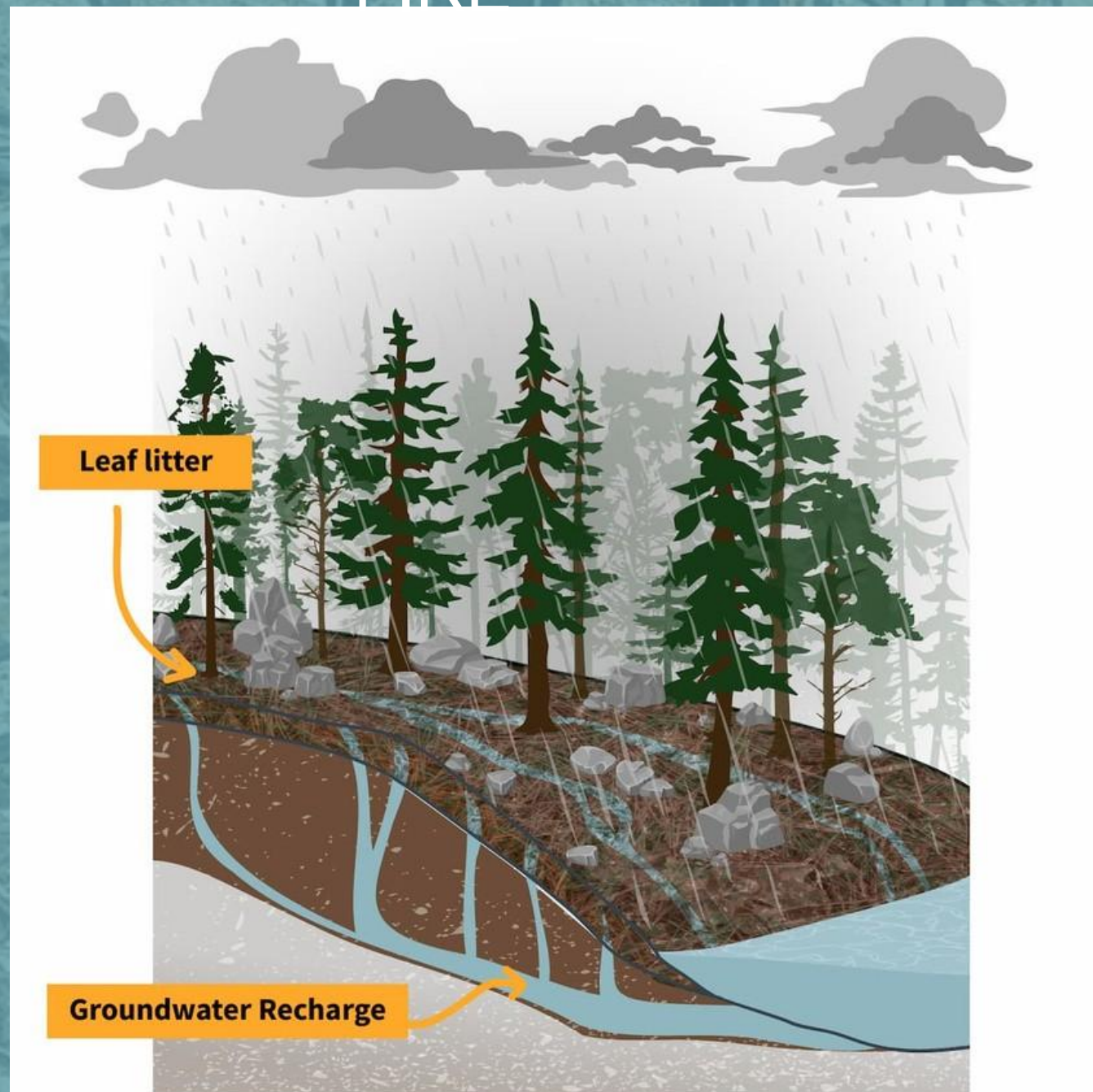
- 25-mile-long perimeter
- 1,050 stream miles
- 124 trail miles
- 41,700 acres of Wilderness burned
- 32 miles of Wild and Scenic corridor burned
- Three watersheds - Poudre, Big Thompson & Laramie
- Five reservoirs
- 16 mountain communities
- 492 structures destroyed



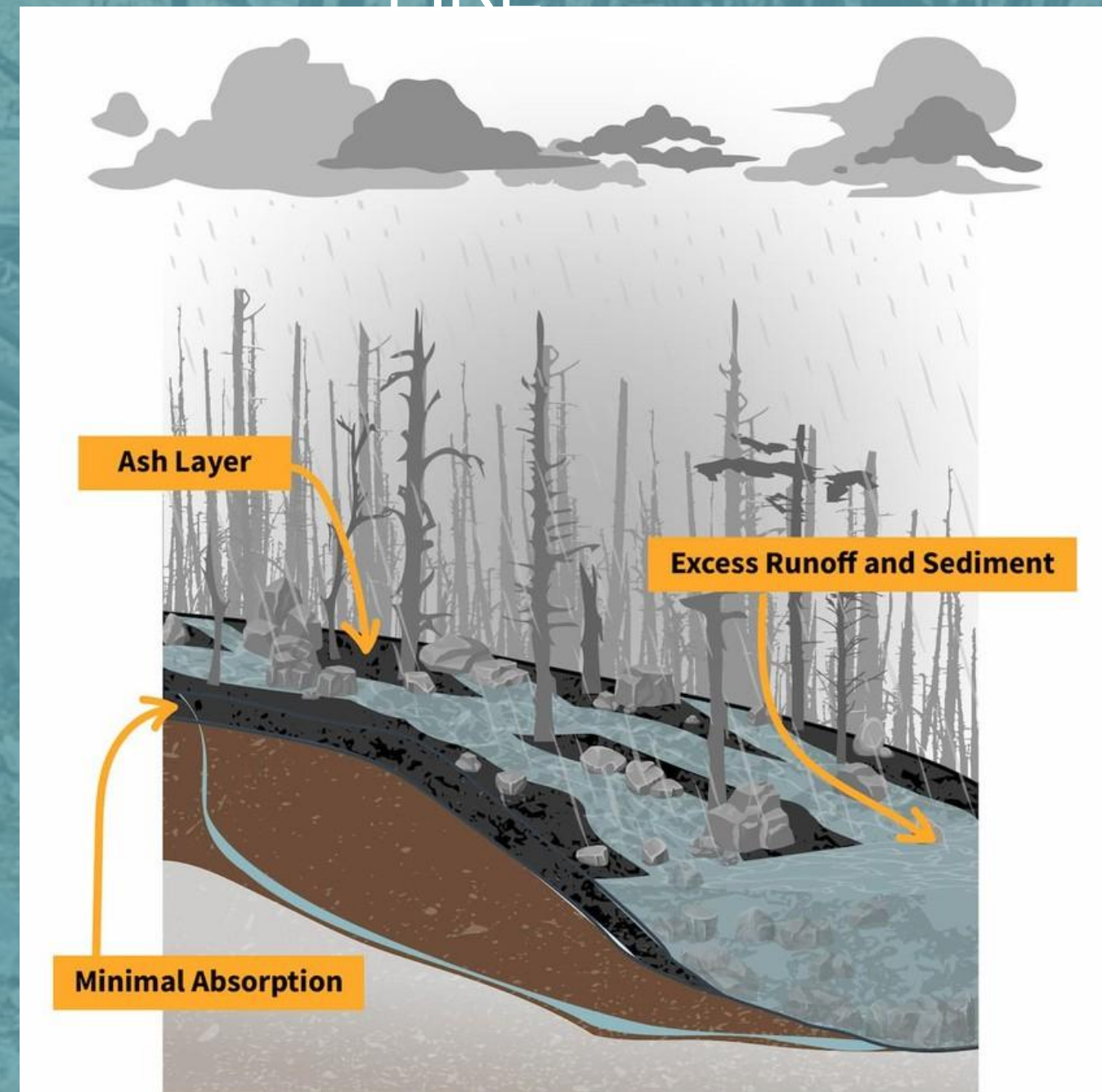
CPF Watershed Impacts



BEFORE
FIRE



AFTER
FIRE



Source: US Geological Survey

Long-Term Watershed Impacts



ALTERED
WATERSHED
PROCESSES

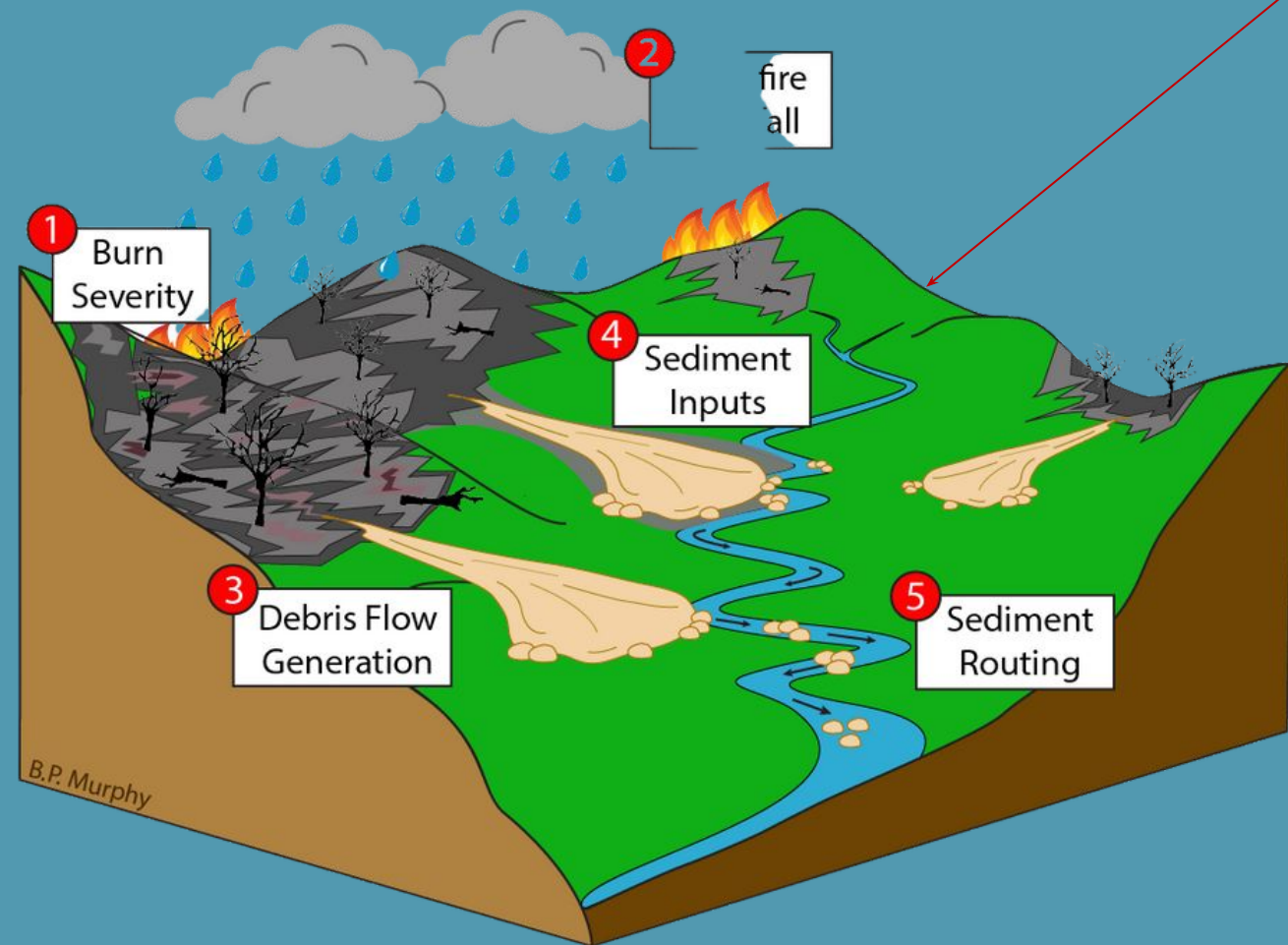


EXCESS SEDIMENT
& NUTRIENTS



DEBRIS FLOWS, FLASH
FLOODS, WASHED OUT
ROADS, WATER
QUALITY ISSUES

Project Prioritization Factors



Post-Fire Sediment Inputs



Soil Burn Sev



Photo Credits: USGS, Ayres Associates



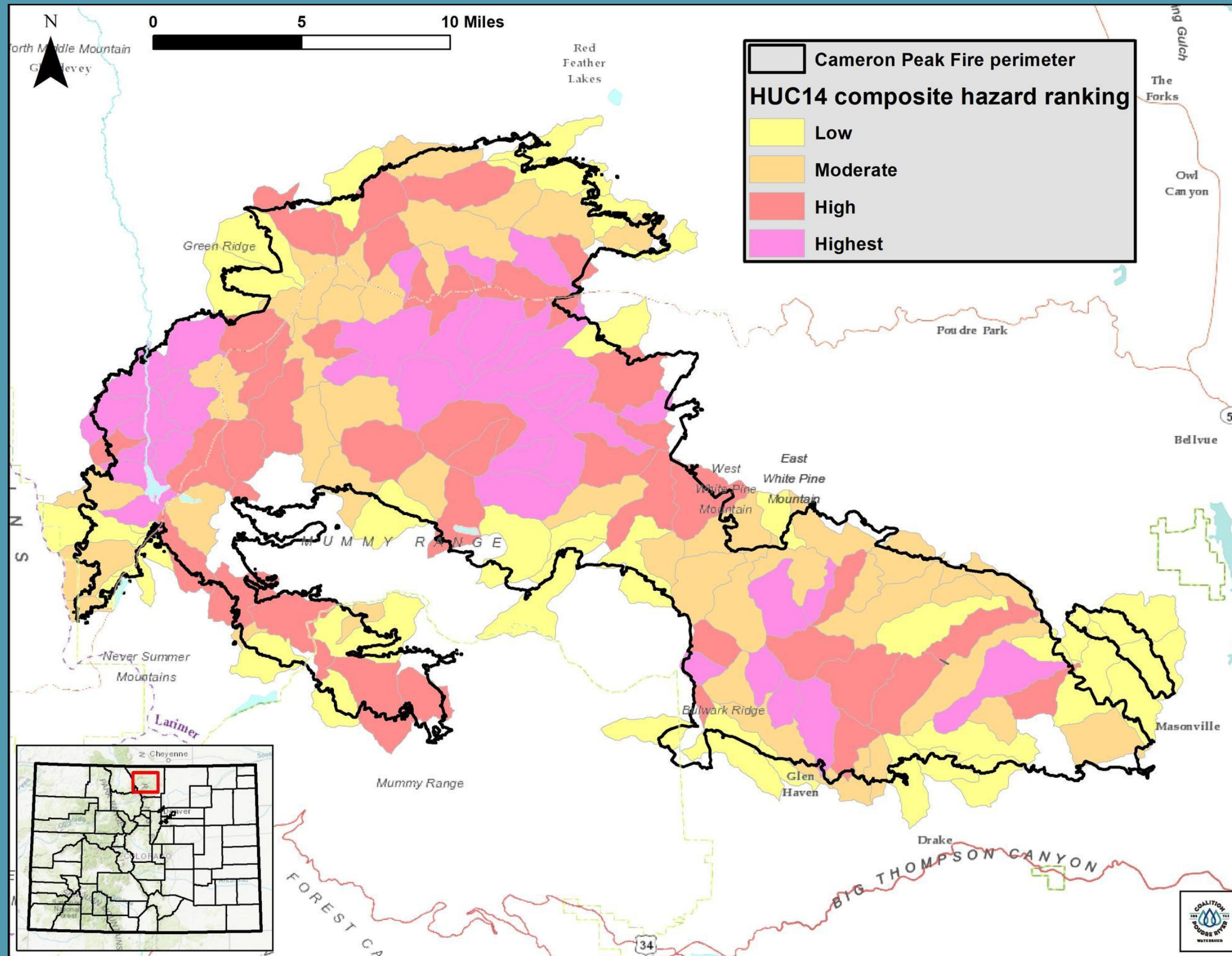
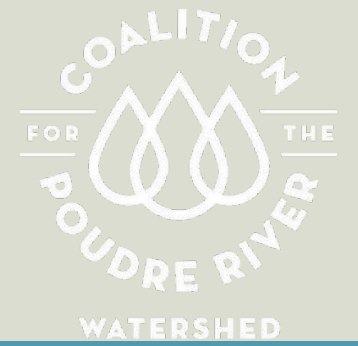
Debris Flow Risk



BLACK HOLLOW FLOOD
JULY 21, 2021



CPF RESTORATION PROGRAM



- WATERSHEDS RANKED LOW TO HIGHEST FOR COMPOSITE HAZARD
- FOCUS ATTENTION ON HIGH TO HIGHEST WATERSHEDS

POST FIRE PROGRAMS & FUNDING

Program	Key Partners	Goals	Funding Source
Aerial Mulching	City of Greeley & City of Fort Collins, Watershed Groups	<ul style="list-style-type: none"> •Limit Hillslope Erosion 	CWCB, EWP, USFS, Local Govts
Point Mitigation (EWP)	City of Greeley, City of Fort Collins, Larimer County	<ul style="list-style-type: none"> •Protect VARs •Enhance Deposition, Limit Stream Incision •Improve Undersized Culverts & Crossings on Cty Rds 	Local Govts; NRCS EWP
Additional Point Mitigation & Reforestation	Watershed Groups – CPRW & BTWC	<ul style="list-style-type: none"> •Improve Water Quality •Improve Riparian Recovery •Reforestation 	CDHPE & CWCB; Community Foundation; Other Private Sources
Planning	Municipalities, USFS, Watershed Groups	<ul style="list-style-type: none"> •All the above! 	USFS, EWP, CWCB, Local Gov'ts
Research & Monitoring	CSU Researchers; USFS RMRS	<ul style="list-style-type: none"> •Study impact of fire and treatments 	CWCB; CSU;

A photograph showing an aerial mulching operation in a forest of charred trees. A helicopter is visible in the upper left, dropping a large, dark, teardrop-shaped mulch bag. The trees are tall and thin, with many appearing as skeletal remains. The sky is a clear, bright blue. The image is partially overlaid by a teal-colored graphic element on the right side.

AERIAL MULCHING

Mitigate the negative consequences of wildfire to high priority watershed values including water quality and supply, river ecosystem function and health, and to reduce flood impacts to downstream communities.

AERIAL MULCHING SUMMARY



As of July 25, 2022,
we've completed
854 acres



- ~20,000 AC IDENTIFIED TO MULCH
- 5,800 AC COMPLETED 2021
- ~6,000 AC PLANNED 2022
- CSU/RMRS RESEARCH ON IMPACT

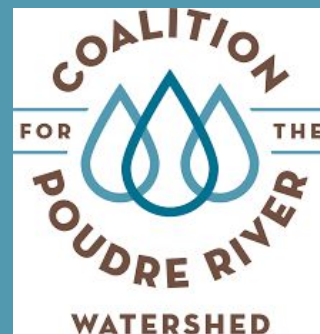
POINT MITIGATION TREATMENTS



REFORESTATION



- PARTNERS IDENTIFY PLANTING AREAS, FUNDRAISE, WORK WITH CSFS NURSERY TO GROW SEEDLINGS
- PONDEROSA PINE, 135 TREES/AC
- CLIMATE WATER DEFICIT LESS THAN 600
- HIGH/MODERATE BURN SEVERITY
- GOAL TO PLANT ~30,000 SEEDLINGS 2022-2023



ADDITIONAL RESOURCES

- Coalition for the Poudre River Watershed website:

<https://www.poudrewatershed.org/cameronpeakfire>

- Storymap with information on fire, impacts, coordination and restoration:

<https://storymaps.arcgis.com/stories/66393e20dd674741b43d024a2f2d9188>

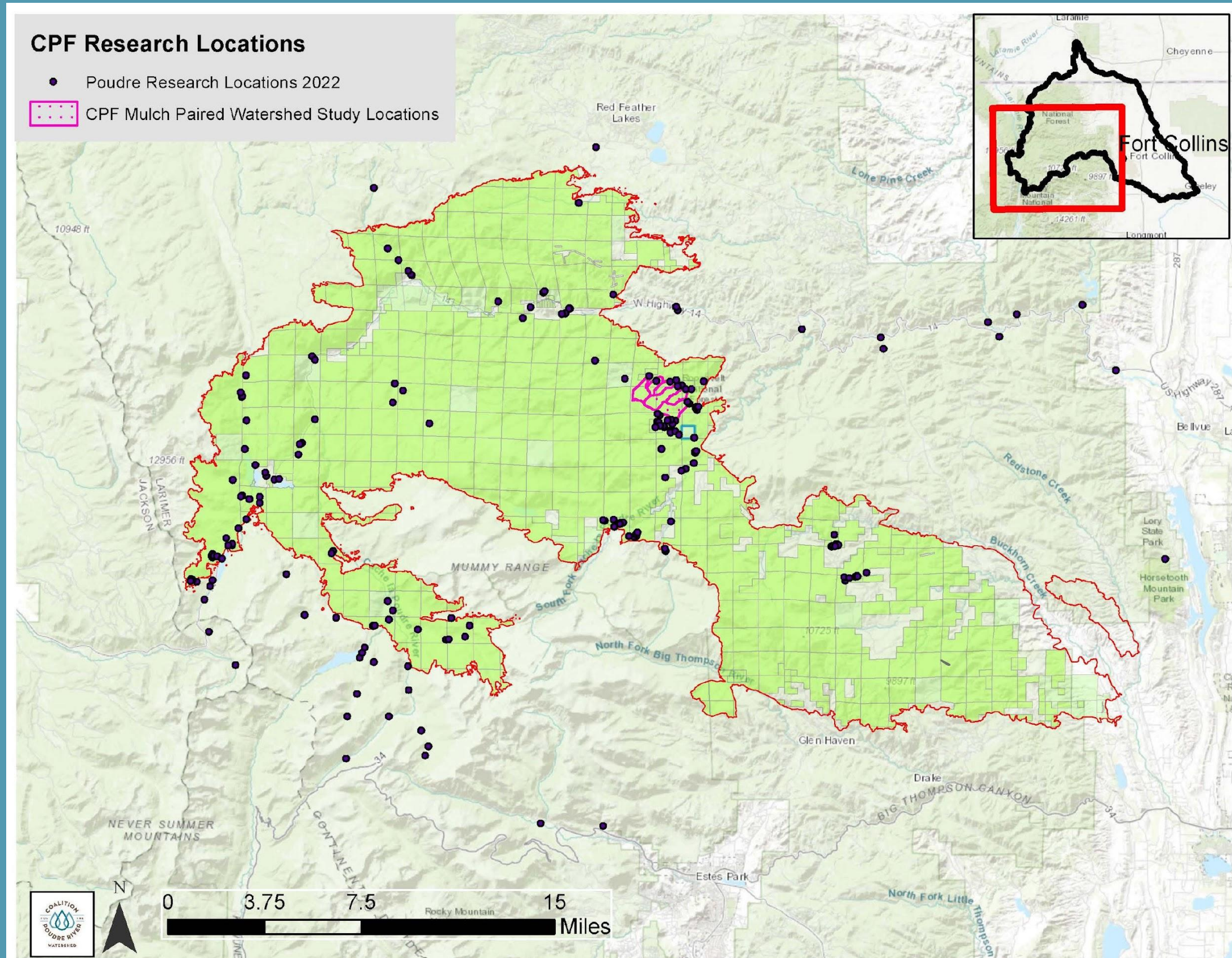
(also embedded on our website)



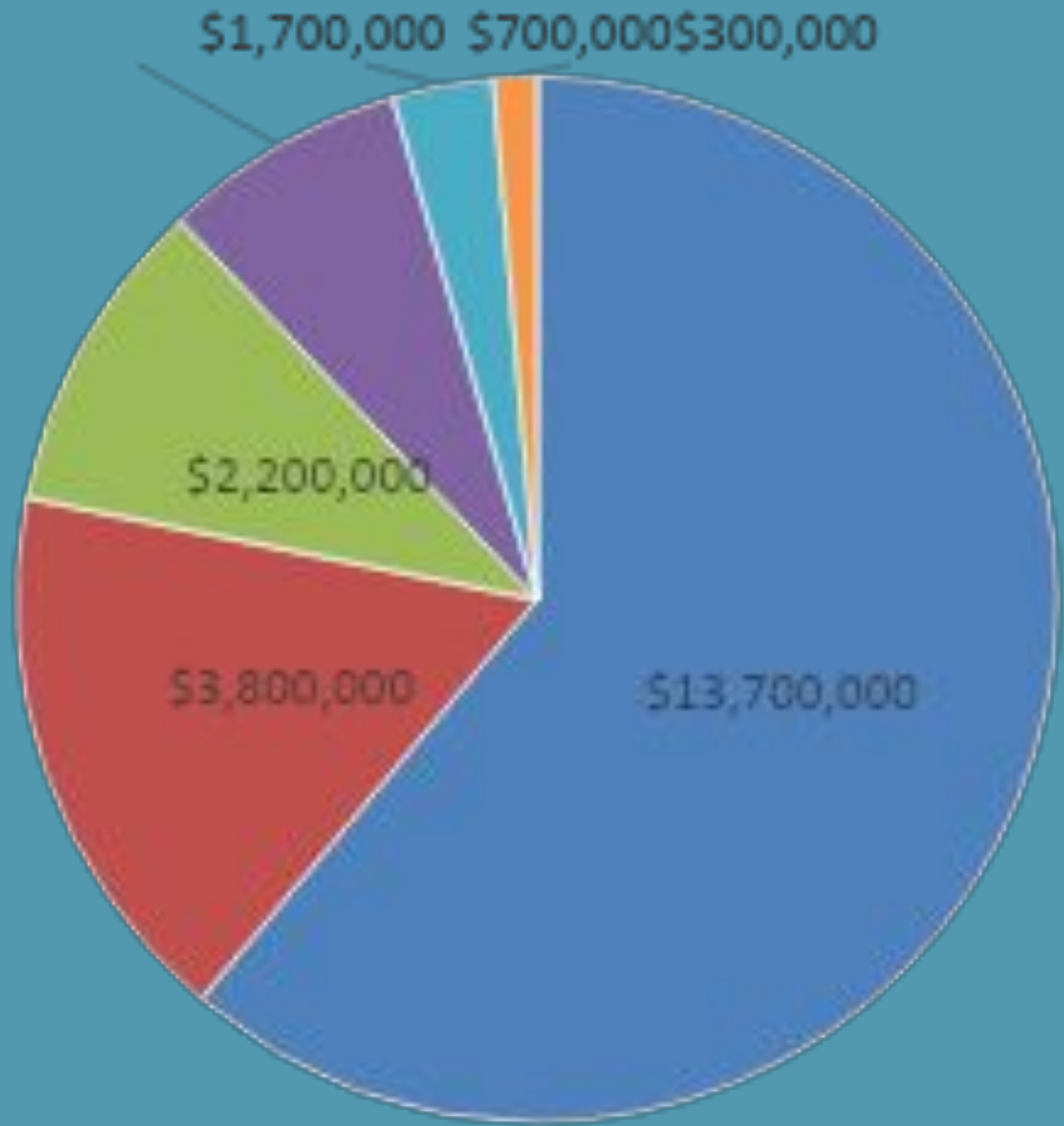
QUESTIONS?



CPF RESEARCH



POST FIRE 2021 PROGRAM SPENDING



- ▣ Aerial Mulching
- ▣ Point Mitigation Construction
- ▣ Additional Mitigation

POST FIRE 2021 FUNDING OVERVIEW

Funding Needs (as of 12/31/2021)



■ Total Secured ■ Funding Gap

POST FIRE NEEDS

2021 Funding Sources



- Federal
- State
- Local