



**SMART Act Hearing
January 27, 2022**

WHO WE ARE

- Colorado's **STATE ADVISORY COUNCIL** on Early Childhood
- Created in 2010; **REAUTHORIZED** by HB17-1106 until 2023

§ 26-6.2-103. Early childhood leadership commission - created - mission

(1) There is created in the state department the early childhood leadership commission. The purpose of the commission is to ensure and advance a **comprehensive service delivery system for pregnant women and children from birth to eight years of age** using data to improve decision-making, alignment, and coordination among federally funded and state-funded services and programs for pregnant women and young children and their families.

At a minimum, the comprehensive service delivery system for pregnant women and children must include services in the areas of **prenatal health, child health, child mental health, early learning, and family support and parent education.**

PARENTS

SCHOOL DISTRICTS

COUNTY GOVERNMENTS

PROVIDERS

PUBLIC HEALTH

FOUNDATIONS

HEALTH

HEAD START

BUSINESS

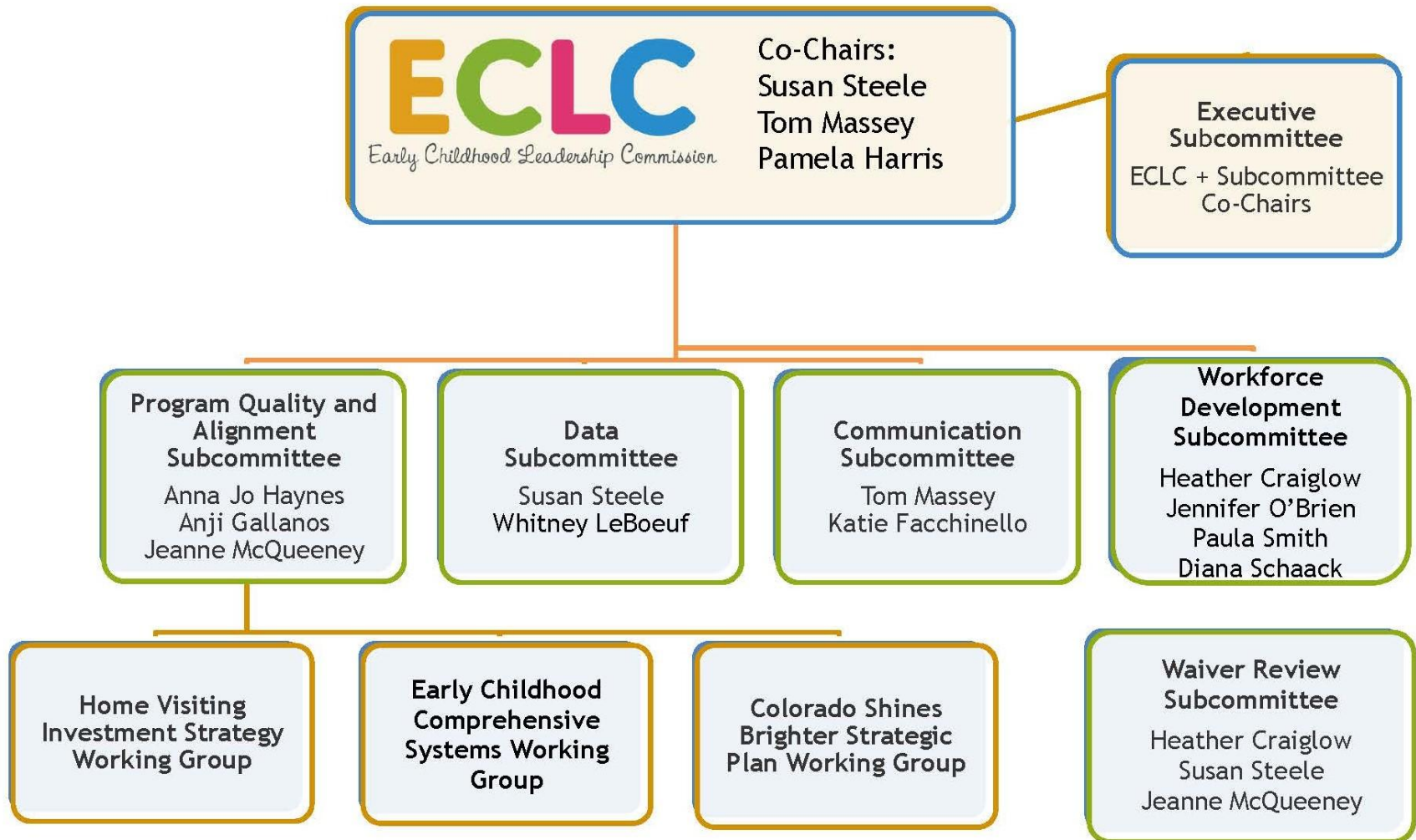
WHO WE ARE

20 Members
including
5 STATE
AGENCIES

WHO WE ARE

- Statutory Duties Include:
 - Advise and make **RECOMMENDATIONS**
 - Assist public and private entities with **ALIGNMENT**
 - Monitor strategies to increase **ACCESS, QUALITY** and **EQUITY** of early childhood services and supports

ORGANIZATIONAL STRUCTURE



Early Childhood Colorado Framework

Early Childhood Colorado Framework A SHARED VISION

For more information visit earlychildhoodframework.org
ADOPTED JULY 2008 | UPDATED JULY 2015

Core Principles

The Early Childhood Colorado Framework is based on and guided by these principles:

- Whole child and family centered
- Prenatal through age eight
- Strengths based
- Culturally relevant and responsive
- Outcomes focused
- Informed by evidence based and promising practices
- Cross-sector collaboration

Strategies for Action

- Connect and Empower Families
- Build Community Capacity
- Implement Quality Standards
- Make Data Informed Decisions
- Develop and Retain the Workforce
- Support Consumer Affordability
- Advance Sustainable Business Practices
- Encourage Public Private Approaches
- Pursue Continuous Quality Improvement
- Ensure Coordinated Services
- Promote and Share Knowledge

Fundamentals

- Strong Partnerships
- Sufficient Investments
- Sound Policy
- Robust Public Engagement
- Shared Accountability
- Effective Leadership
- Relevant Education Opportunities

Outcomes ► access, quality and equity

- Family Support & Education
- Health & Well-Being
- Learning & Development

ACCESS
<ul style="list-style-type: none"> Family engagement and leadership opportunities exist within programs, schools and communities Services and supports promote the well-being and resiliency of parents and caregivers Family friendly policies and practices exist in the workplace
<ul style="list-style-type: none"> Comprehensive health coverage and services are consistently utilized by pregnant women and children Integrated and preventive maternal and child physical, behavioral and oral health services are available All settings promote mental health and well-being through early identification, consultation and treatment
<ul style="list-style-type: none"> Education, coaching and ongoing training exist for caregivers, teachers and other professionals Learning experiences and environments are high quality, developmentally appropriate and affordable
QUALITY
<ul style="list-style-type: none"> Family knowledge and capacity support children's healthy development and learning Families advocate for high quality comprehensive services and supports that lead to future success
<ul style="list-style-type: none"> All health care providers, including mental health, deliver coordinated, family focused care Settings and practices promote strong relationships, social and emotional development, appropriate nutrition and physical activity
<ul style="list-style-type: none"> Formal and informal care environments and education practices reach the highest levels of quality Adults understand and support children's learning and development, including social and emotional All settings provide effective transitions across and within programs, schools and systems
EQUITY
<ul style="list-style-type: none"> Education, employment, housing, financial and legal supports contribute to family economic security Families, including those with high needs, experience timely and coordinated services and supports
<ul style="list-style-type: none"> Families have the ability to plan the number and timing of their children All environments are safe, free of toxins, have affordable foods and offer physical activity Children with special health, behavioral or developmental needs receive individualized services and supports
<ul style="list-style-type: none"> All children are ready for school and achieving by 3rd grade regardless of ability, race, place, income, language and culture Children, including those with high needs, receive timely, comprehensive and affordable academic services and transition supports

all children are valued, healthy and thriving



Results

- CHILD**
Young children reach their developmental potential and are ready to succeed in school and in life
- ENVIRONMENTS**
Environments that impact children are safe, stable and supportive
- RELATIONSHIPS**
Adults are knowledgeable, responsive and interact effectively with and on behalf of children
- COLORADO**
Localities and the state attain economic and social benefits by prioritizing children and families

www.EarlyChildhoodFramework.org

Inclusion, Diversity and Equity Statement



“For many children in our state, their experience is inequitable from birth. This is evidenced by numerous indicators that show that children of color consistently face barriers that lead to lower educational attainment, poorer health outcomes, and other lifelong challenges. The importance of early care and education in challenging and breaking through these systemic inequities cannot be overstated.”

Department of Early Childhood and Universal Preschool Planning

- HB21-1304: Created a new Department of Early Childhood
- Charged the ECLC to lead a stakeholder engagement process and approve two reports



Department of Early Childhood and Universal Preschool Planning - Engagement Efforts

Beginning in July 2021, there were numerous stakeholder engagement opportunities including:

- 6 evening town halls led by the ECLC
- 38 meetings of 4 topic-specific subgroups
- 10 Transition Advisory Group (TAG) meetings
- 8 TAG feedback forms
- 6 ECLC meetings
- 6 user-centered listening sessions
- 15 statewide listening tour sessions
- Feedback form on the ECLC website that was continuously reviewed and shared with stakeholders and decision makers

All meeting materials, notes and recordings are available at:

www.earlychildhoodcolorado.org/transition

Department of Early Childhood and Universal Preschool Planning - Approved Plans



[Full Report](#)

Executives Summaries in
[English](#), [Spanish](#) and [Arabic](#)



[Full Report](#)

Executives Summaries in
[English](#), [Spanish](#) and [Arabic](#)

LOOKING FORWARD

- 1 Guide Implementation of Department of Early Childhood and Universal Preschool
- 2 Elevate the Early Childhood Workforce
- 3 Promote the *Early Childhood Colorado Framework*
- 4 Continue commitment as Stewards of Equity
- 5 Serve as Early Childhood Resource

THANK YOU!



For more information:
www.earlychildhoodcolorado.org

Kristina Heyl
kristina.hey@state.co.us
303-817-4706