

Made in Pueblo. North America's "Greenest Steel"

Supporting Jobs & Clean, Sustainable Infrastructure



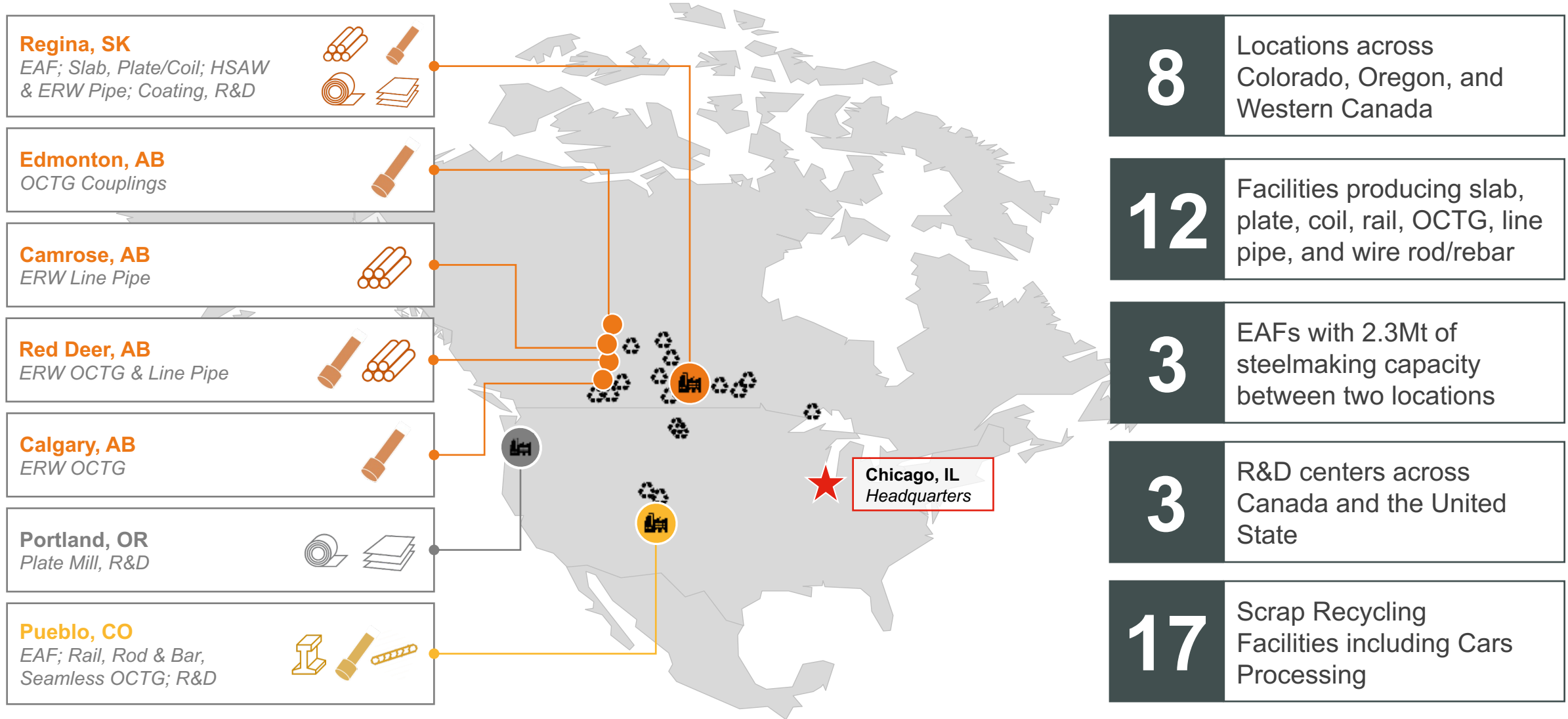
Annie Stefanec

Director, Communication & Government Affairs



October 2023

Operating Footprint. North America.



EVRAZ Pueblo. Our History.

- **1872:** Founded more than 150 years ago as Colorado Coal & Iron, later becoming Colorado Fuel & Iron (CF&I)
- **1882:** Produce the first steel rail for the Denver & Rio Grande Railroad
- **1905:** 10% of Colorado's total population work for CF&I
- **1957:** 22,215 workers employed for CF&I, the largest number of employees on payroll
- **1974:** Electric Arc Furnace goes online at the Pueblo steelmaking site for the first time
- **2006:** EVRAZ plc purchases steel mills in Pueblo
- **2021:** Groundbreaking for the Palmer Project, EVRAZ Pueblo's Long Rail Mill

Steel made in Pueblo helped build the American West and connect the country.

Today, we are keeping North America on track for a more sustainable, cleaner future.



Our team.

- 150+ year legacy providing family-wage to the local Pueblo community.
 - Union (USW) and non-union
 - Low barriers of entry
- Supports 8,500+ Direct & Indirect Jobs
- Current Annual Economic Impact Approx. **\$1 Billion**



Our Markets and Products. Made in Pueblo.

Core Markets



Freight Rail



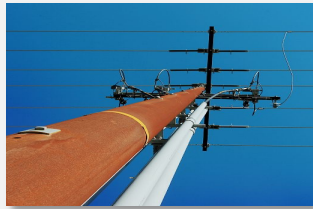
Roads & Bridges



Construction



Solar Farms



Utilities



Agriculture



Oil & Gas



Wind Towers



CO₂ & Hydrogen

Primary Products



Rail

Premium and Standard



Plate & Coil

Discrete and Coiled Plate, Cut-to-Length, Armor, Hot Rolled Coil



Wire Rod & Rebar

High Carbon, Low Carbon, Coiled Rebar



Energy Tubulars

Large Diameter HSAW, HFIW Line Pipe, Seamless and ERW OCTG

EVRAZ Pueblo. Industry-Leading Sustainability Profile.



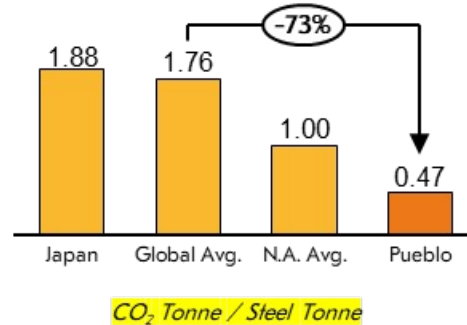
As an EAF-based steel producer, Pueblo Steel CO₂ emissions are **~75%** lower than the global average



Big Horn Solar, commissioned in late 2021 at Pueblo, can provide up to **95%** of Pueblo Steel power needs

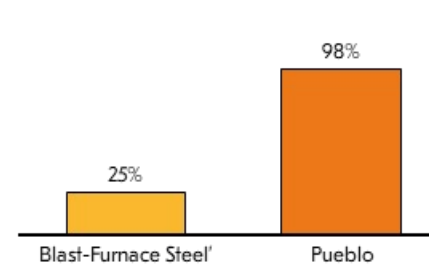
GHG Emissions (Scope 1+2)

73% lower Emissions Intensity than the global average



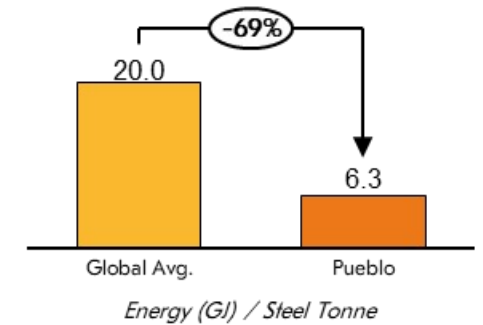
Recycling

98% recycled content in our EAF-based steel



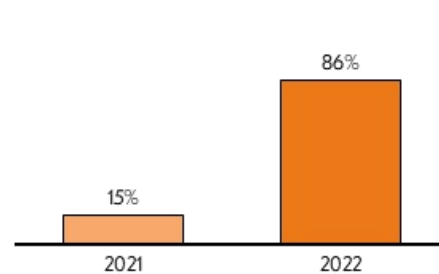
Energy

69% lower energy usage than the global steel industry



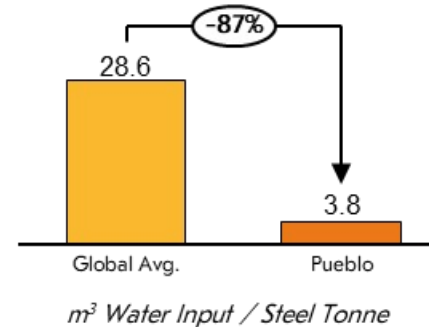
Renewable Energy Usage

86% renewables in our Steelmaking power mix



Water

87% lower water usage than the global steel industry



Waste & Co-Products

100% of our steel slag is recycled



Steel slag recovered and recycled

Our competitive advantage. Made in Colorado.



EAF Technology

75% lower carbon emissions compared to traditional steelmaking technologies



Recycled content

Steel is endlessly recyclable without loss of quality
Our products regularly contain 98% recycled content



Embodied carbon / GWP

Our commitment to producing low carbon steel products lowers our customer's emissions.



EPD / Third Party Verified LCA

Certified climate related data that showcases out best in class commitment to sustainability



Rated Evaluation Criteria

Proven manufacturing experience and quality, providing regional benefits that support local businesses, economies and long-term job stability.

Powered by the sun. **Project Bighorn.**





Wind Energy

ENA Portland is a leading supplier of steel plate for onshore wind towers, with over 600,000 tons of steel already supplied in North America.

>600kt steel supplied
or the equivalent of
>5,000 wind towers
since 2014



CCUS

ENA Canada has supplied some of the largest carbon capture pipelines in the world, including the Alberta Carbon Trunkline, and we continue to develop steel, pipe, and connection solutions for carbon transport and storage.

>15M tons annual carbon capture capacity
built with ENA tubulars



Hydrogen

As the first N.A. supplier to qualify pipe for high pressure, 100% H2 transport, ENA is leading the industry in transmission and storage solutions for a hydrogen economy at scale.

Advancing a State-of-the-Art Hydrogen Laboratory
in partnership with a leading non-profit engineering and research organization



Geothermal

We are adapting our OCTG casing and premium connections, traditionally used for fossil fuel, to zero-emission geothermal energy.

Deploying EVRlock Premium OCTG Connections
in zero-carbon geothermal drilling operations



ENA and America's Low-Carbon Infrastructure

Steel rail is critical to a low-carbon economy in North America

Moving freight by rail instead of truck lowers greenhouse gas emissions by...

~75%

ENA Pueblo supplies

~50%

of North America's rail



Project Palmer. **New Long-Rail Mill Update**

- **\$900M investment**
- **1/4-Mile-Long Rail**
 - improve safety and reliability
 - Collaboration with City of Pueblo, PURA, State of Colorado, Pueblo business community and customers
- Construction Continues – managed in house, on track for 2024

Project will be completed, and new rail mill will be commissioned in safe, timely & efficient manner



Community impact.

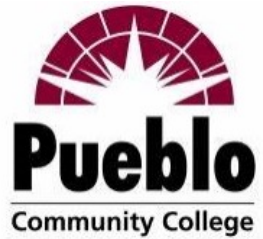
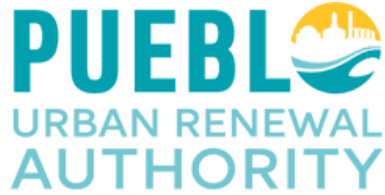
Between 2018-2022:

- **\$150m** paid in taxes
- **\$240m** in business with **500** different CO vendors and suppliers
- **\$210m** in electricity and natural gas
- **\$1B** in announced investments since 2020

Pueblo's Steel Mill is a Vital Player in a Highly Competitive Domestic Industry, Operating in a Global Marketplace



Community-focused Partnerships & Support



Thank you!



Annie Stefanec



Director, Communications & Government Affairs



EVRAZ North America



312.439.2966



Annie.Stefanec@evrazna.com

 **WE**
LEAD THE
CHARGE
AS ONE 