



Caring for Colorado's Forests

Addressing High Priority Forest Treatment Needs in CO

Susan Jeheber-Matthews

Interim Director

Colorado State Forest Service

September 2, 2021



Challenges for Our Forests



Why do we need to manage our forests in Colorado?

Because our forests face many challenges, and much of Colorado's forests are not healthy.

Overgrown Forest Conditions



Dense, Unhealthy Forest Conditions in Grand County

Wildfires



Longer wildfire seasons are expected in Colorado, with larger, more intense and uncharacteristic fires



Insects and Disease



Ongoing drought in Colorado continues to set the stage for outbreaks of bark beetles and other insects



Growth in the WUI



More Coloradans are living in the wildland-urban interface (WUI), putting them at risk of wildfires



Road Map to Forest Health

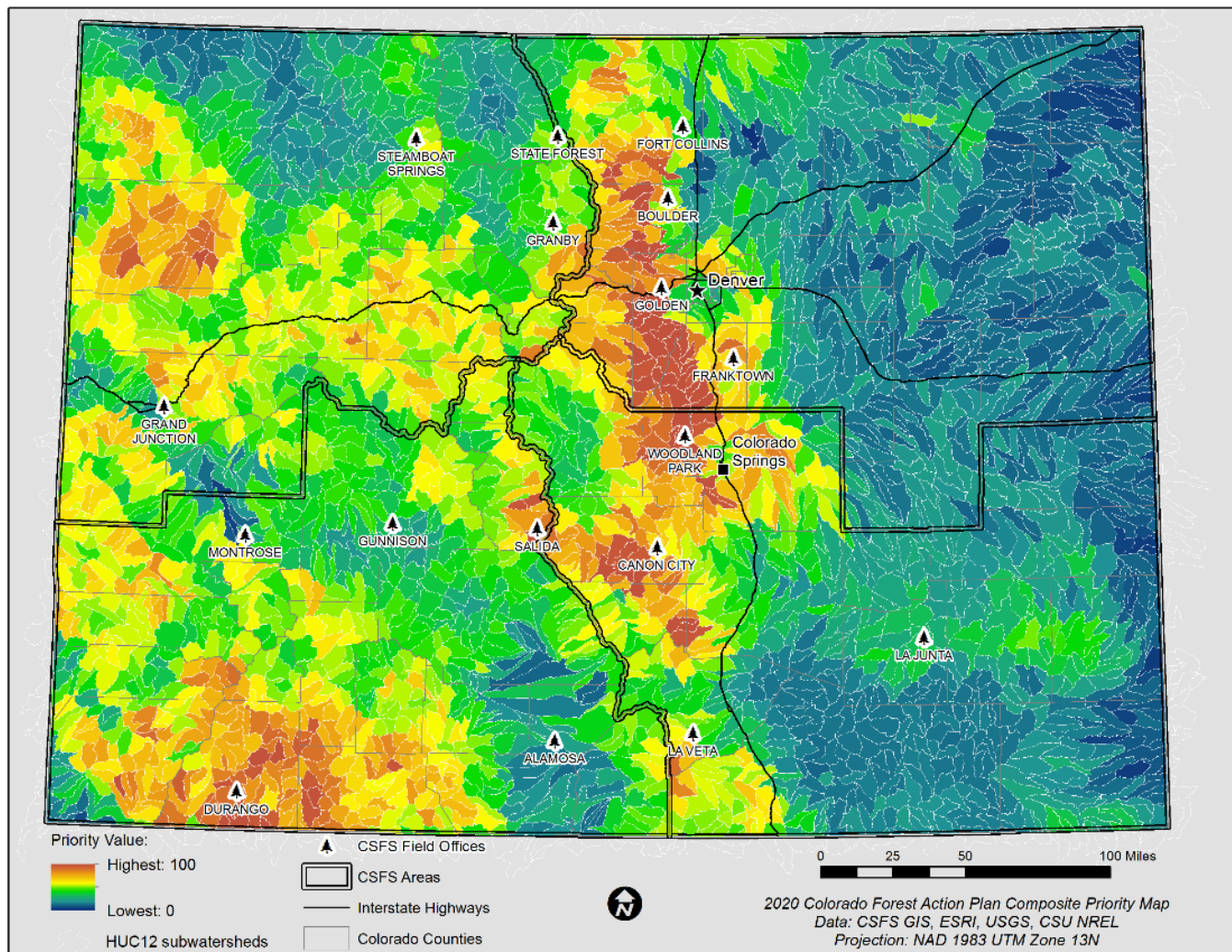


Colorado Forest Action Plan

2020

The Colorado State Forest Service is a steward of the state's forestlands, committed to the challenge of creating and maintaining healthy, resilient forests for generations to come.

Composite Priority Map



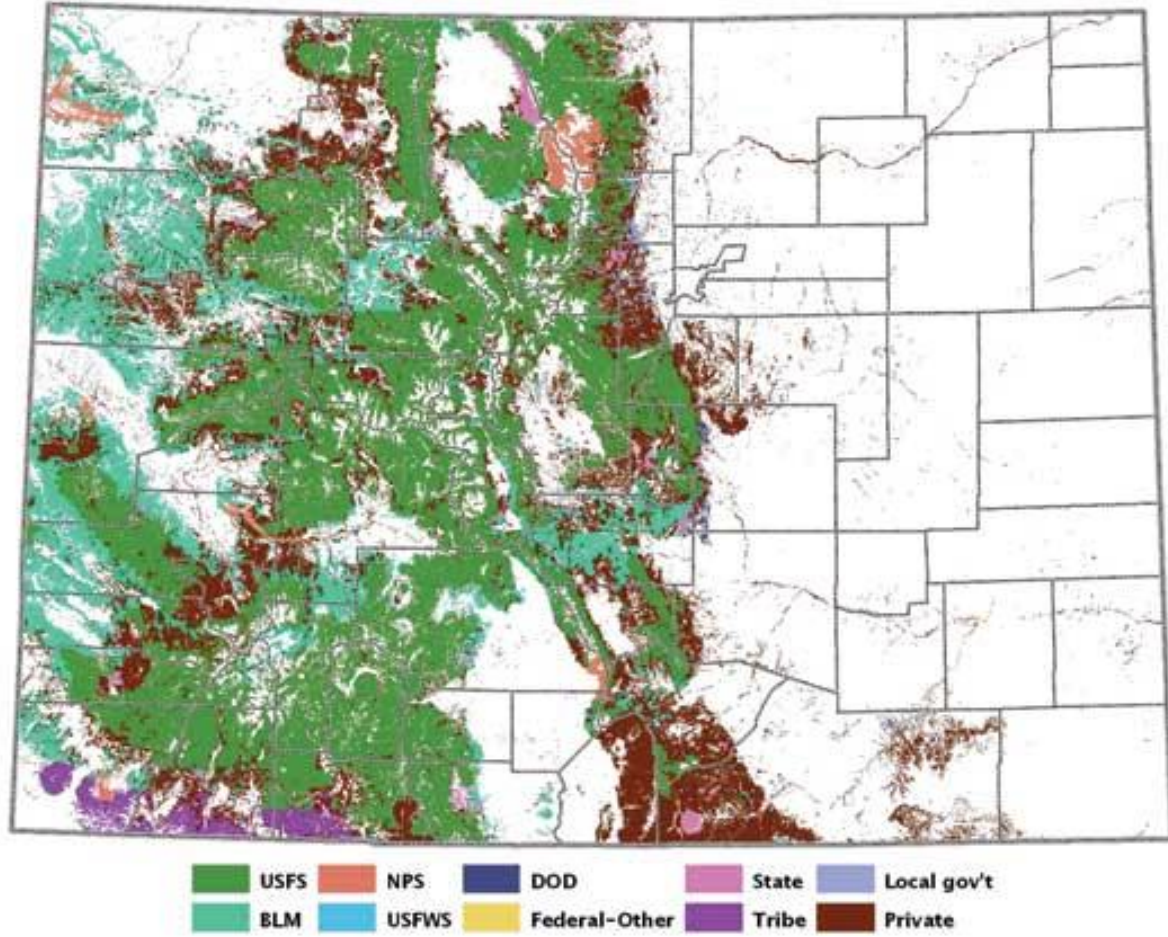
Invest in Our Forests



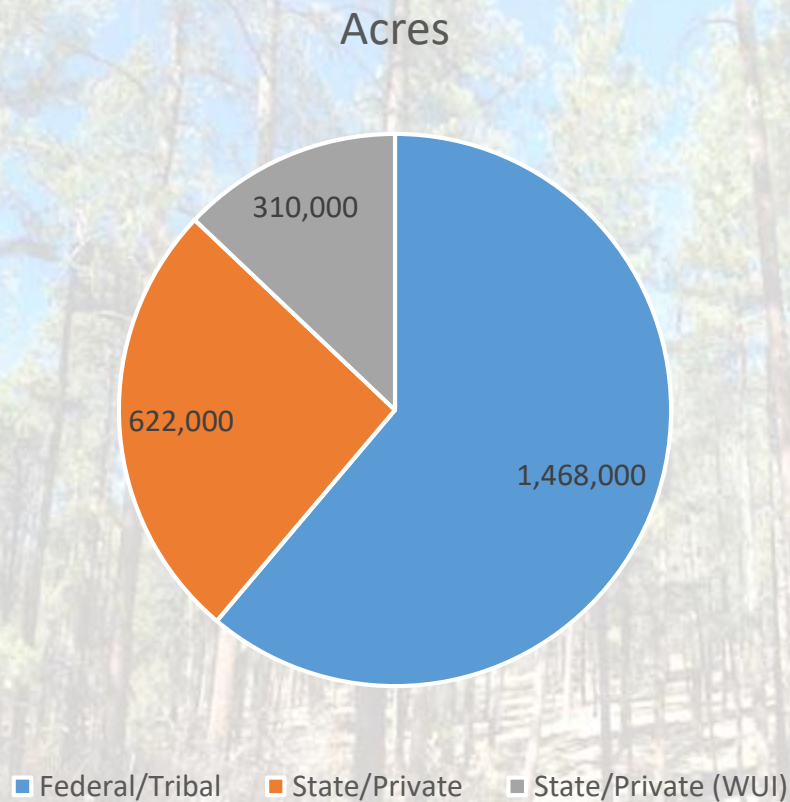
“About 10 percent of Colorado’s 24 million acres of forest need urgent attention to address forest health, wildfire risk and threats to water supplies.”

- 2020 Colorado Forest Action Plan

Colorado's Forests: Ownership



High Priority: 2.4 Million Acres



High Priority WUI: 2.4 Million Acres

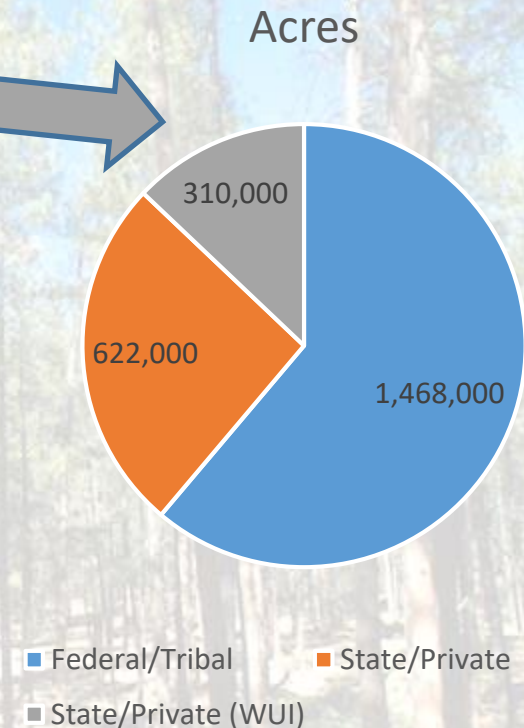


310,000 acres @ \$3,200 per acre =
\$992,000,000



Planning horizon 10 years:
31,000 acres per year at a cost of
\$99,200,000 per year

Planning horizon 20 years:
15,500 acres per year at a cost of
\$49,600,000 per year



Current Capacity



Total acres treated 2008-2017

89,583 acres

\$152,559,849

Future Capacity



2008-2017 High Priority Acres Treated <i>per year</i>	2022-2032 Projected WUI Acres Treated <i>per year</i>	2022-2042 Projected WUI Acres Treated <i>per year</i>
8,958 acres	31,000 acres	15,500 acres
\$15,255,985	\$99,200,000	\$49,600,000

2020



East Troublesome Fire viewed from Walden, CO

Pine Gulch \$35,000,000

Cameron Peak \$134,000,000

East Troublesome \$14,000,000

All Lands, All Forests



Partnerships are
the key!





Questions?

Susan Jeheber-Matthews
Susan.Matthews@colostate.edu
970-491-7394
csfs.colostate.edu

