



Republican River Basin Rio Grande River Basin

David Robbins

Cleave Simpson

Aaron Sprague

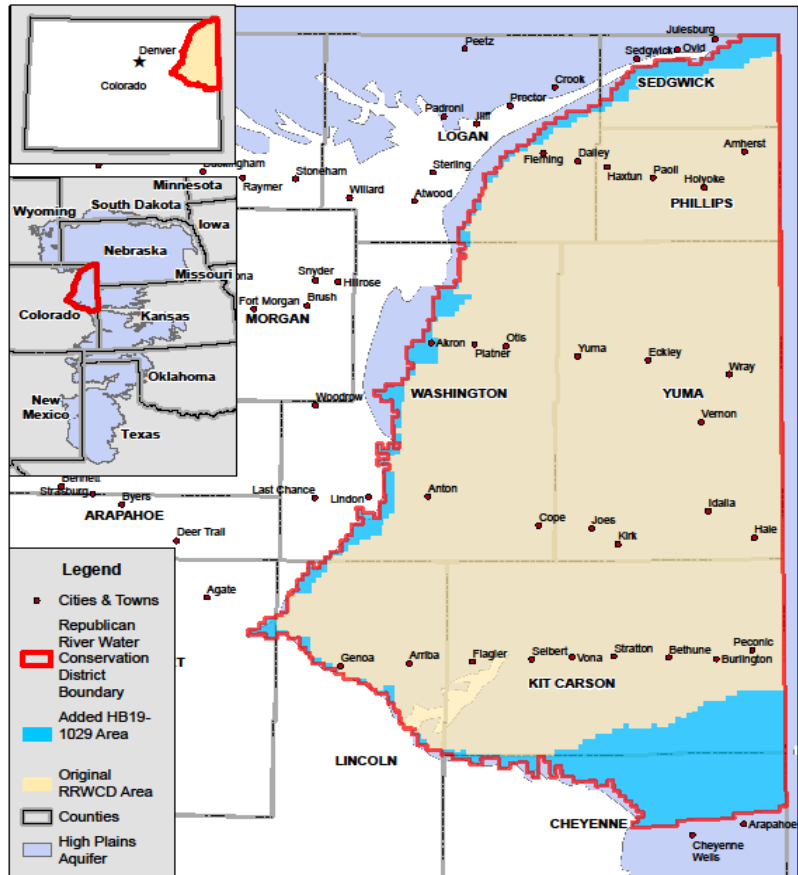
Marisa Fricke





Republican River Water Conservation District

Aaron Sprague



Legend

- Cities & Towns
- Republican River Water Conservation District Boundary
- Added HB19-1029 Area
- Original RRWCD Area
- Counties
- High Plains Aquifer

0 3 18 36 Miles

N
W E
S

Job No. R1401
File: RRWCD_2019.mxd
Date: 06/29/19
Prepared For: RRWCD

Hendrix Wai Engineering, Inc

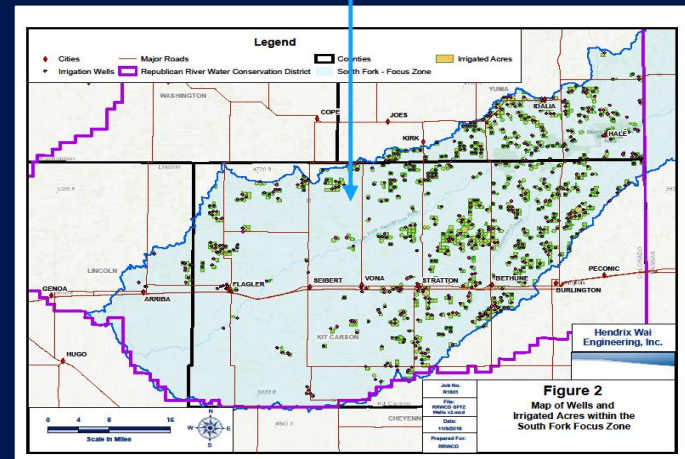
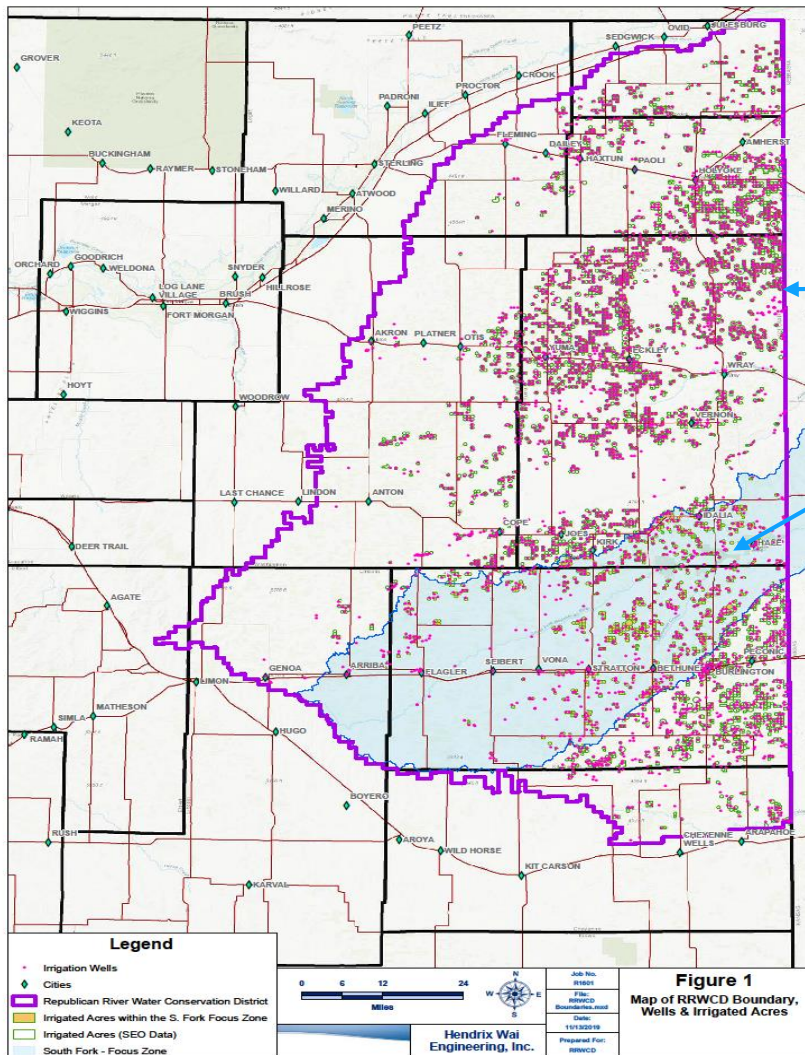
Location Map
The Republican River Water Conservation District Boundary

- ### Republican River Water Conservation District
- Created in 2004 to assist the State of Colorado in complying with the Republican River Compact signed in 1942. RRWCD is funded by Water Use Fee paid by irrigators and municipalities
 - The RRWCD-WAE has taken on the state-driven problems of complying with the interstate compact
 - Currently the RRWCD cannot continue to carry the burden of compact compliance alone without significant financial assistance



Compact Compliance Pipeline

To receive 100% credit for CCP deliveries, CO, KS and NE signed a Resolution in 2016 which created the **South Fork Focus Zone**



Past, Current, and Future expenditures of the RRWCD

\$15,972,633	Conservation Programs ~ CREP-FSA and EQIP-NRCS to permanently retire 41,808 irrigated acres for compact compliance
\$68,472,866	Purchasing surface water or leasing groundwater for compact compliance
\$3,140,868	Purchasing groundwater rights to reduce depletions
\$60,600,000	Compact Compliance Pipeline
\$142,413,734	Total cost to the RRWCD

In order to keep irrigation....crops, cattle, dairy...ultimately all food/agriculture a viable resource for Colorado

\$65,000,000	Projected cost to permanently retire 25,000 acres in the South Fork Focus Zone
---------------------	---



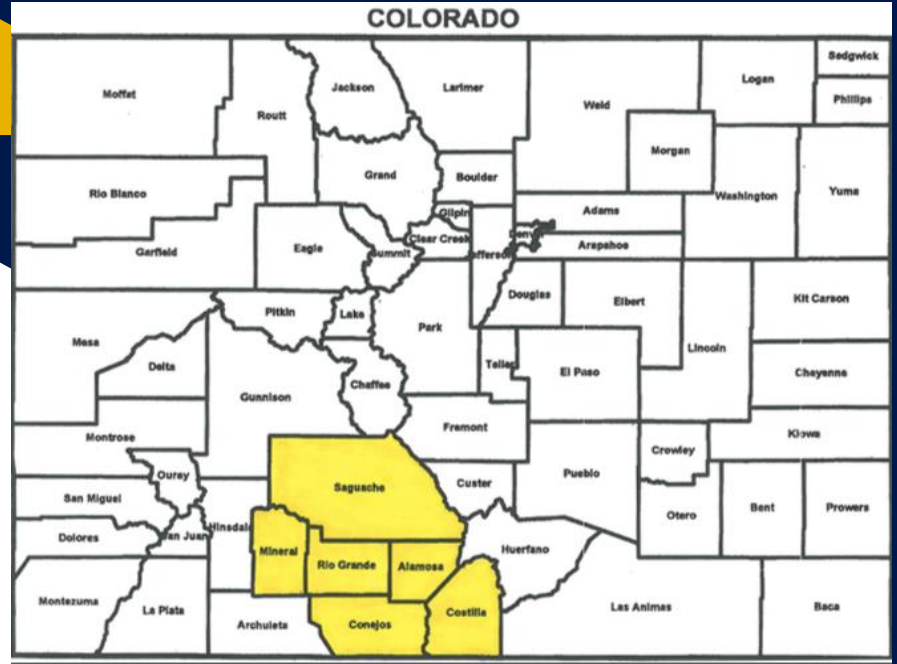
Rio Grande Water Conservation District

Marisa Fricke

Who We Are: Rio Grande Basin

San Luis Valley, CO

- SLV is located in south central Colorado, one of the highest desert valleys in the world
- Average precipitation is less than 7 inches
- SLV is one of the poorest rural areas of Colorado, population 48,000
- 5th in the nation for potato production, 2nd in the nation for fresh potatoes
- **Aquifers make agriculture possible**



Why?

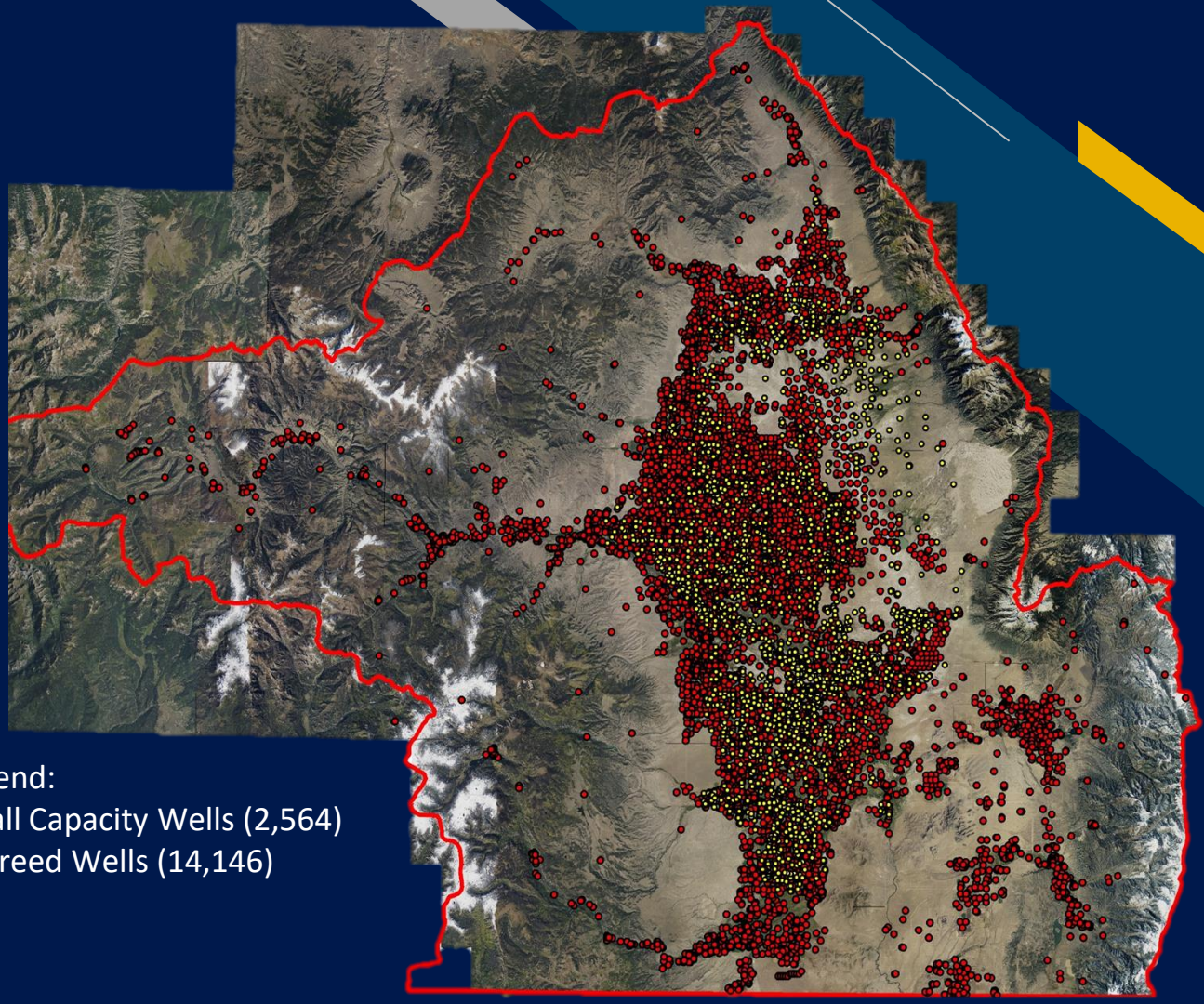
- Groundwater and Surface Water is over appropriated, every drop of water in RG Basin is spoken for.
- In 1967 the Legislature formed the Rio Grande Water Conservation District to manage the water situation in the Rio Grande in order to assist the State in achieving compliance with the Compact and to encourage conservation of the water resources
- In an effort to insure sustainability of the ground water, in 2006 the Farmers agreed to tax themselves for groundwater withdrawals.



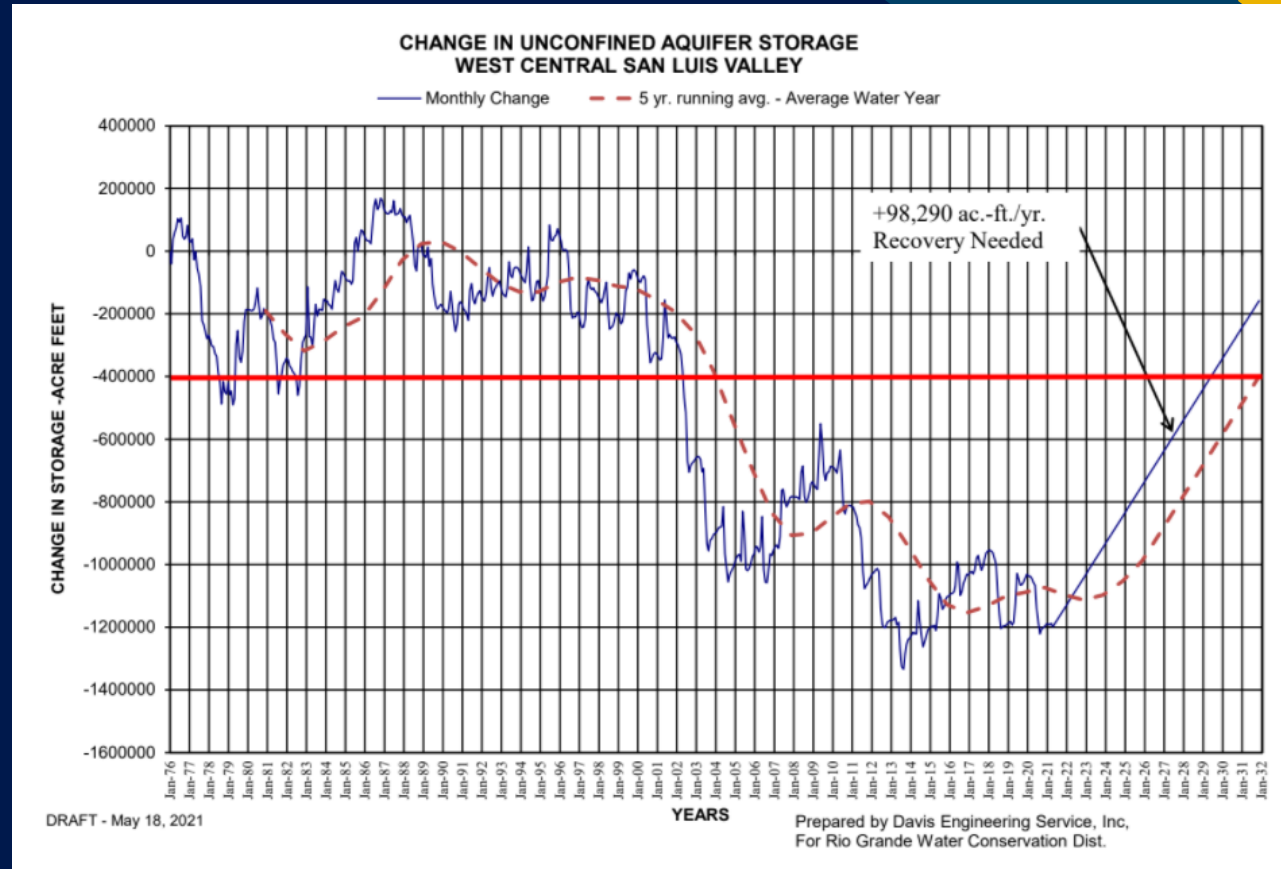
The Problem

An Over Appropriated Basin

- Legend:
- Small Capacity Wells (2,564)
 - Decreed Wells (14,146)



The Challenge



Six Subdistricts in Operation



The Efforts Made

10,386 acres signed up in Conservation Reserve Enhancement Program (CREP)

7,000 acres signed up in Fallow program - funded 100% by farmers.

Reduced pumping by approx. 30%

Different Crop Rotations, introduced less water consumptive crops such as hemp and quinoa, over 10 years of creating various water conservation programs.



**\$69 Million Dollars
Spent Towards
Reaching
Sustainability**

Your Support Will...



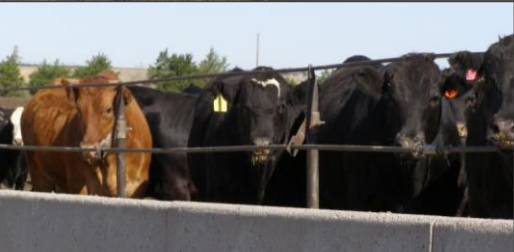
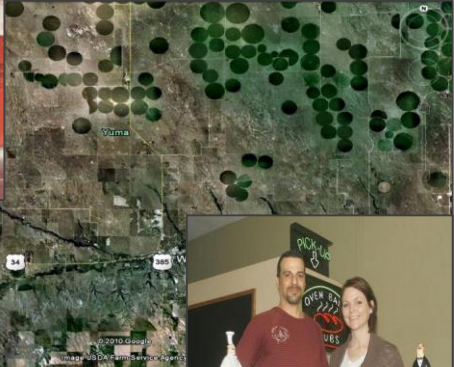
Allow communities in both Districts to continue to address the state imposed mandates and other challenges such as soil health and climate issues



Allow for small rural communities a chance to continue to provide food for families across the state and nation



Help many farms continue to employ farm help and prevent them from losing their land for reasons beyond their control.



Help us keep our communities vibrant and strong.

