

Drought Conditions

Tracy Kosloff
Deputy State Engineer



2018 Water Year (ended Sept 30, 2018)

warmest and
second driest in
124 years of
records for the
state of Colorado.



COLORADO DROUGHT MITIGATION AND RESPONSE PLAN



August 2018

Prepared Pursuant to
Disaster Mitigation Act 2000 & Section 409, PL 93-288

Prepared by
Colorado Water Conservation Board
Department of Natural Resources

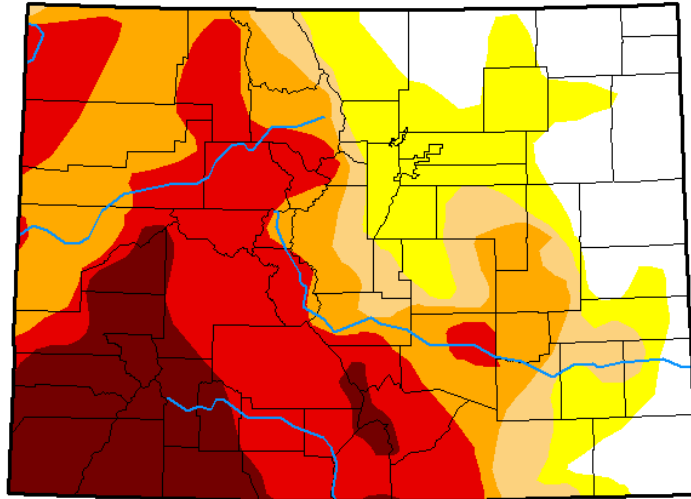
Water Availability
Task Force
Meets Monthly

Drought Task Force
Meets during drought
when activated by
Governor

Activated
May 2018 - May 2019

U.S. Drought Monitor Colorado

October 23, 2018
(Released Thursday, Oct. 25, 2018)
Valid 8 a.m. EDT



Drought Conditions (Percent Area)

	None	D0-D4	D1-D4	D2-D4	D3-D4	D4
Current	16.64	83.36	67.83	59.23	39.09	13.64
Last Week 10-16-2018	16.64	83.36	67.83	59.23	39.09	13.64
3 Months Ago 07-24-2018	17.85	82.15	76.64	60.82	39.72	10.20
Start of Calendar Year 01-02-2018	6.57	93.43	33.53	7.27	0.00	0.00
Start of Water Year 09-25-2018	14.19	85.81	72.30	64.41	48.47	16.21
One Year Ago 10-24-2017	71.57	28.43	1.12	0.00	0.00	0.00

Intensity:

- D0 Abnormally Dry
- D1 Moderate Drought
- D2 Severe Drought
- D3 Extreme Drought
- D4 Exceptional Drought

The Drought Monitor focuses on broad-scale conditions. Local conditions may vary. See accompanying text summary for forecast statements.

Author:

Eric Luebehusen
U. S. Department of Agriculture



COL
Division of Water Resources
Department of Natural Resources

<http://droughtmonitor.unl.edu/>

U.S. Drought Monitor Colorado

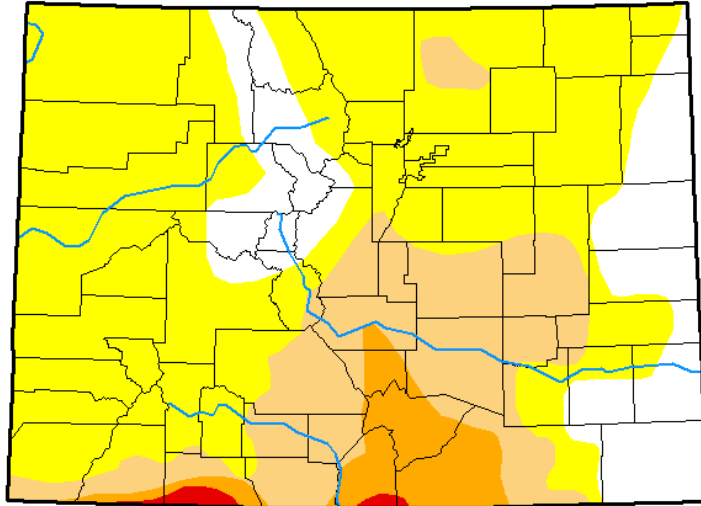
March 12, 2019

(Released Thursday, Mar. 14, 2019)

Valid 8 a.m. EDT

Drought Conditions (Percent Area)

	None	D0-D4	D1-D4	D2-D4	D3-D4	D4
Current	17.00	83.00	25.44	6.26	0.58	0.00
Last Week <i>03-05-2019</i>	10.64	89.36	58.05	12.08	0.58	0.00
3 Months Ago <i>12-11-2018</i>	17.10	82.90	66.26	54.82	27.11	11.22
Start of Calendar Year <i>01-01-2019</i>	17.94	82.06	66.26	54.91	27.11	11.22
Start of Water Year <i>09-25-2018</i>	14.19	85.81	72.30	64.41	48.47	16.21
One Year Ago <i>03-13-2018</i>	10.16	89.84	70.75	47.44	13.44	0.00



Intensity:

- D0 Abnormally Dry
- D1 Moderate Drought
- D2 Severe Drought
- D3 Extreme Drought
- D4 Exceptional Drought

The Drought Monitor focuses on broad-scale conditions. Local conditions may vary. See accompanying text summary for forecast statements.

Author:

Jessica Blunden
NCEI/NOAA



COL
Division:
Department of Natural Resources



<http://droughtmonitor.unl.edu/>

U.S. Drought Monitor Colorado

July 9, 2019
(Released Thursday, Jul. 11, 2019)
Valid 8 a.m. EDT

Drought Conditions (Percent Area)

	None	D0-D4	D1-D4	D2-D4	D3-D4	D4
Current	100.00	0.00	0.00	0.00	0.00	0.00
Last Week 7-02-2019	100.00	0.00	0.00	0.00	0.00	0.00
7-09-2019	100.00	0.00	0.00	0.00	0.00	0.00
7-02-2019	91.99	4.74	0.00	0.00	0.00	0.00
7-02-2019	84.41	15.59	0.00	0.00	0.00	0.00
7-02-2019	77.11	22.89	0.00	0.00	0.00	0.00
7-02-2019	60.62	39.38	0.00	0.00	0.00	0.00
7-02-2019	48.47	51.53	0.00	0.00	0.00	0.00
7-02-2019	33.33	66.67	0.00	0.00	0.00	0.00
7-02-2019	13.32	86.68	0.00	0.00	0.00	0.00

8 weeks
drought free!

- D2 Severe Drought
- D3 Extreme Drought
- D4 Exceptional Drought

Drought Monitor reports are based on the best available data. Drought conditions may vary. See accompanying text summary for more details and past statements.

Richard Tinker
CPC/NOAA/NWS/NCEP



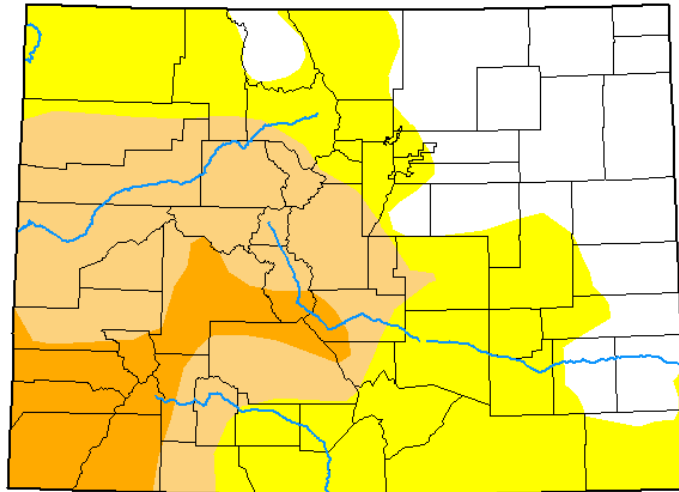
droughtmonitor.unl.edu



COL
Division
Department of Natural Resources

U.S. Drought Monitor Colorado

October 15, 2019
(Released Thursday, Oct. 17, 2019)
Valid 8 a.m. EDT



Drought Conditions (Percent Area)

	None	D0-D4	D1-D4	D2-D4	D3-D4	D4
Current	25.44	74.56	37.01	11.23	0.00	0.00
Last Week <i>10-08-2019</i>	25.48	74.52	37.01	11.23	0.00	0.00
3 Months Ago <i>07-16-2019</i>	100.00	0.00	0.00	0.00	0.00	0.00
Start of Calendar Year <i>01-01-2019</i>	17.94	82.06	66.26	54.91	27.11	11.22
Start of Water Year <i>10-01-2019</i>	30.14	69.86	27.53	0.00	0.00	0.00
One Year Ago <i>10-16-2018</i>	16.64	83.36	67.83	59.23	39.09	13.64

Intensity:

- None
- D0 Abnormally Dry
- D1 Moderate Drought
- D2 Severe Drought
- D3 Extreme Drought
- D4 Exceptional Drought

The Drought Monitor focuses on broad-scale conditions. Local conditions may vary. See accompanying text summary for forecast statements.

Author:

Richard Heim
NCEI/NOAA

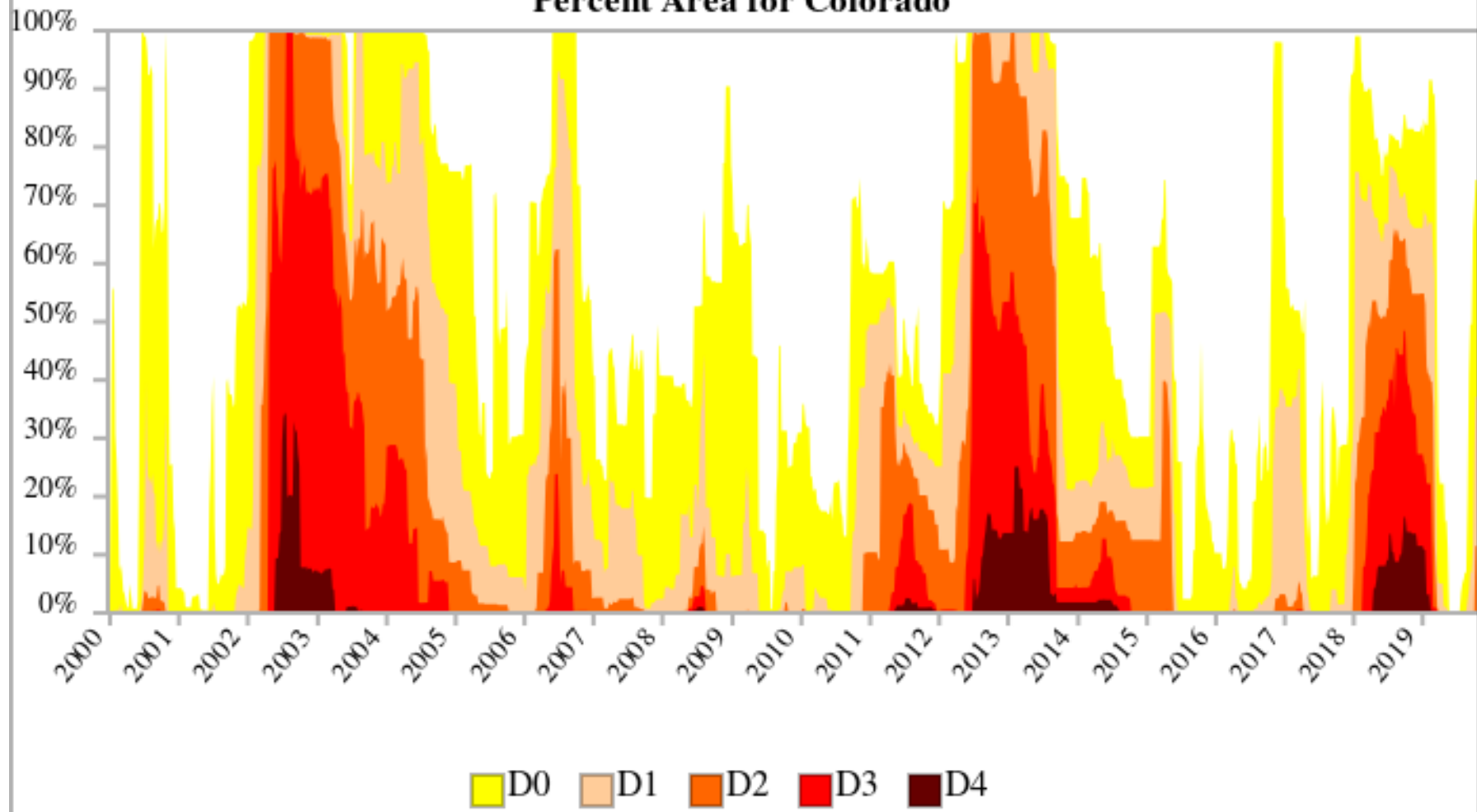


droughtmonitor.unl.edu

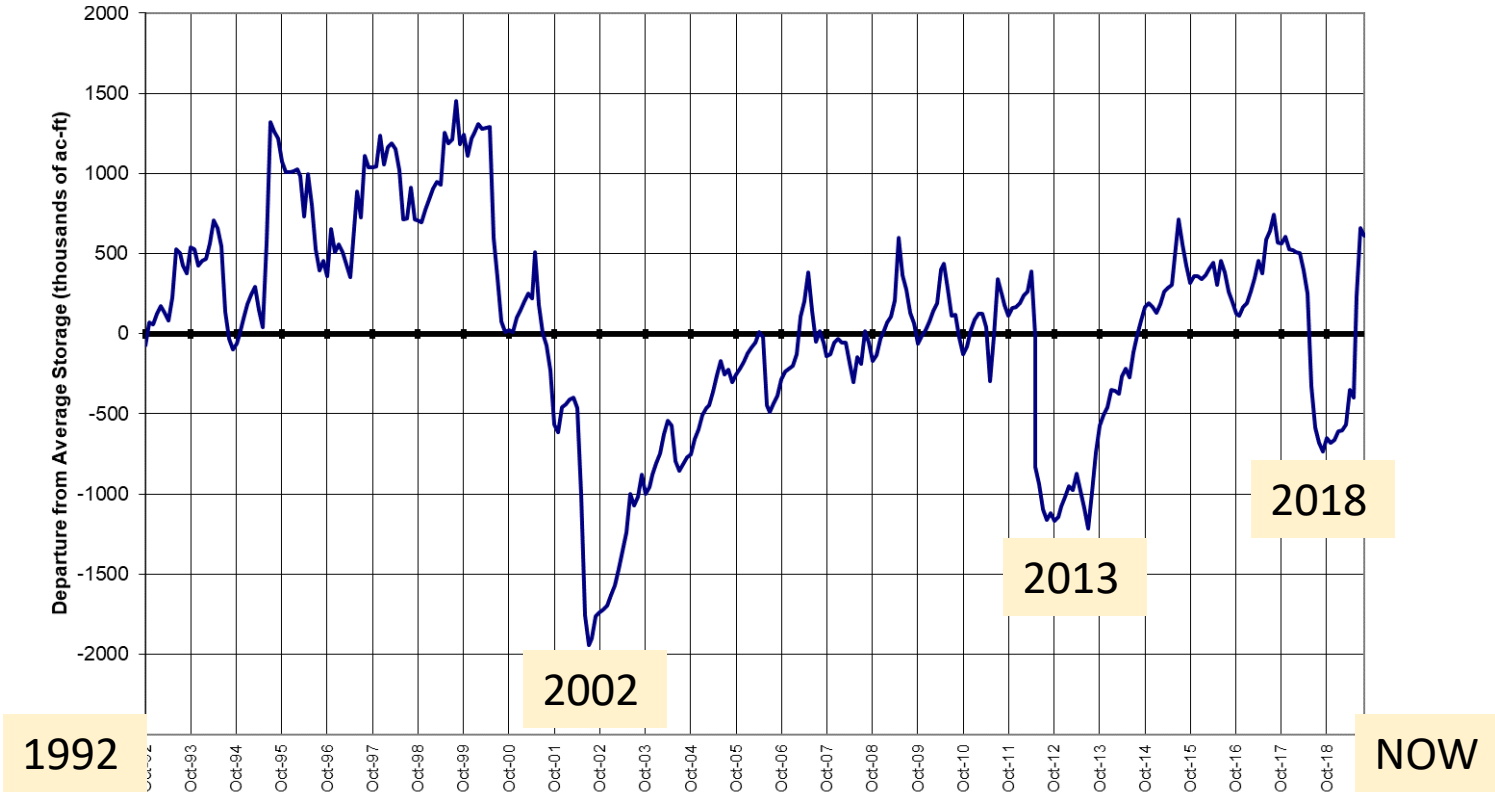


COL
Division of Water Resources
Department of Natural Resources

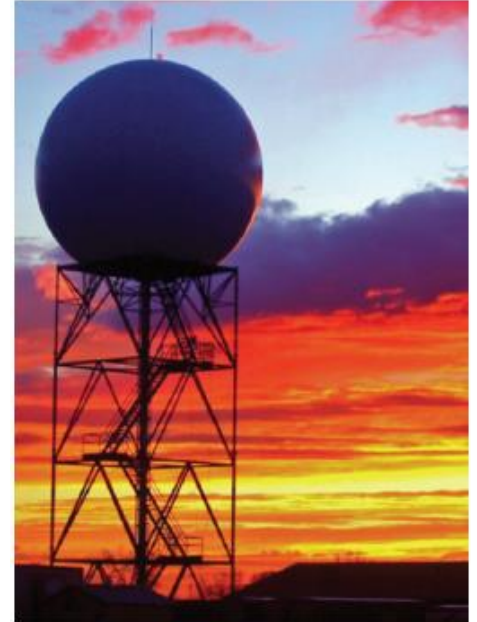
Percent Area for Colorado



COLORADO STATEWIDE Reservoir Storage Departure from Average



Radar in Alamosa



PARTNERS:

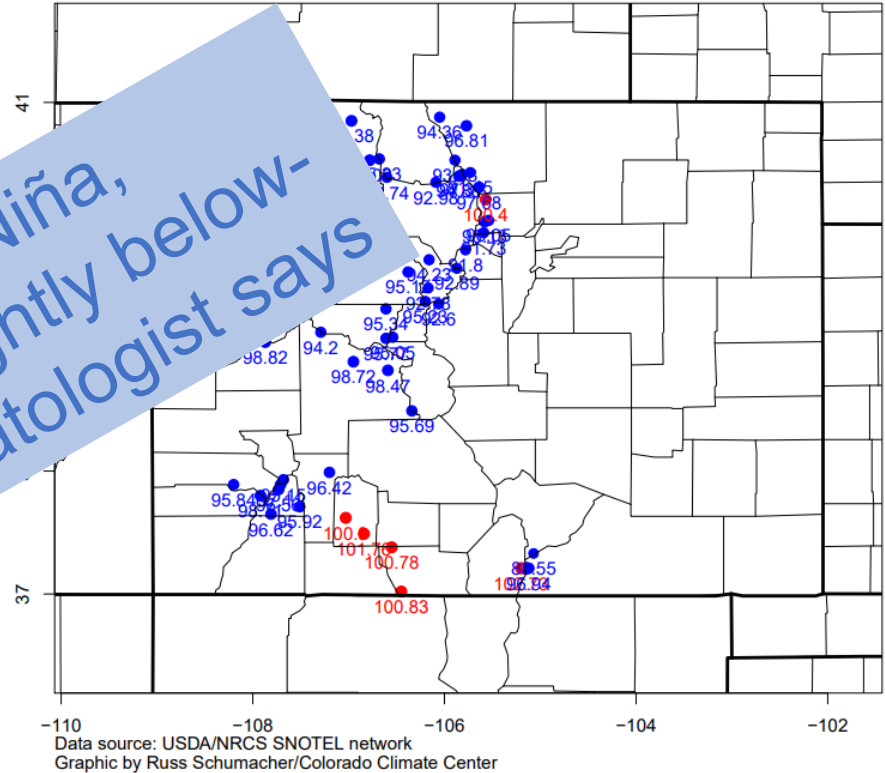
Rio Grande Water Conservation District, Conejos Water Conservancy District, San Luis Valley Water Conservancy District, San Luis Valley Irrigation District, Rio Grande Watershed Emergency Action Coordination Team, Colorado Water Conservation Board, EWR Radar, Division of Water Resources, Alamosa County, Conejos Water Users Association, Rio Grande Water Users Association



ENSO Neutral

1. Peak Snow Water Equivalent leans lower in neutral years than El Niño or La Niña years
2. More importantly, peak SWE is trending downward in neutral years due to climate change
3. The correlation between ENSO and peak SWE is weak. Why? Is it a more typical winter? Yes

average percent of normal peak SWE during ENSO-neutral (using MEIv2)



Summary

- Drought conditions are returning due to dryness since July
 - Reservoir storage is strong
 - Waiting for the snow season
-
- Thank you to Colorado Climate Center and NRCS Snow Survey Program for continued support.