



CNCC – SOUTH CAMPUS REDUNDANCY UPGRADE

Joint Technology Committee Presentation

South Campus Redundancy Upgrade

- Why This Project Matters
- Current State
- Scope of Work
- Return on Investment
- Questions



CNCC Spartan – In Front of Hefley Building

Why This Project Matters

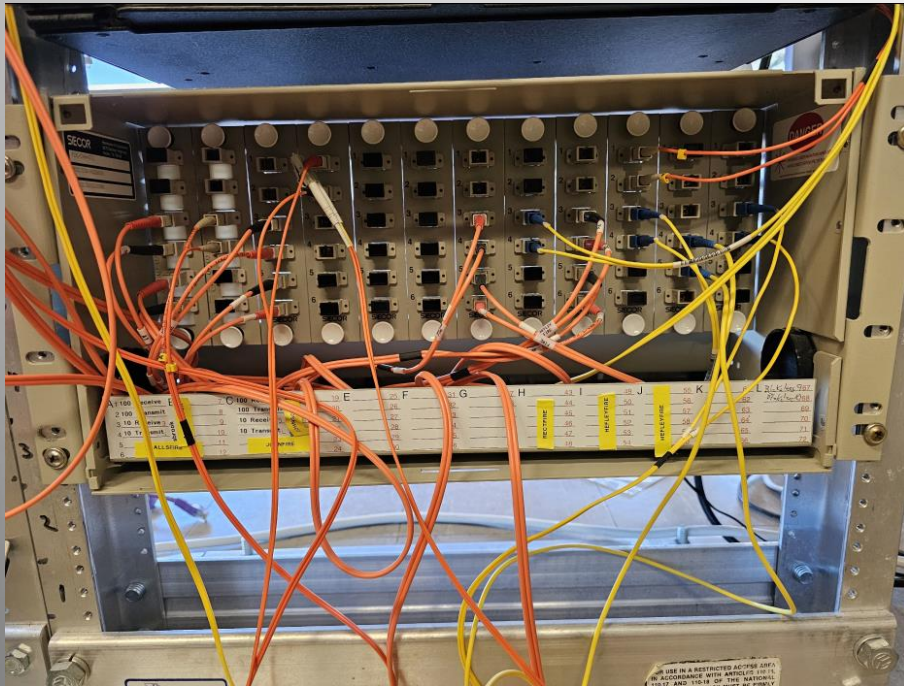
- Educational Impact
- Security Redundancy
- Equipment Protection



Hefley and Weiss Buildings in Background

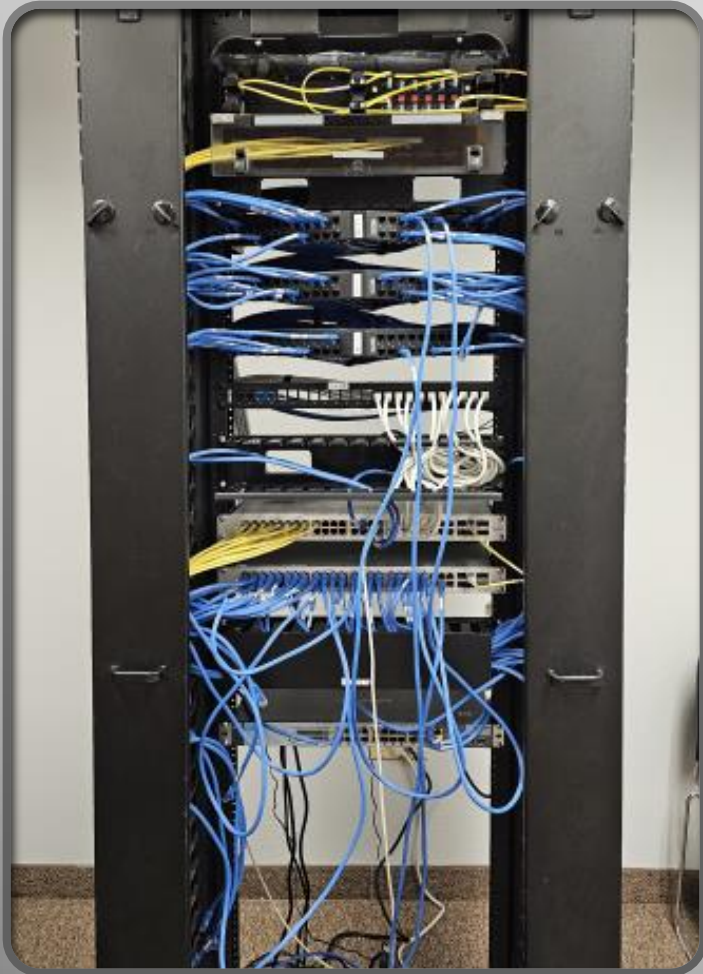
CNCC – South Campus Redundancy Upgrade

Current State



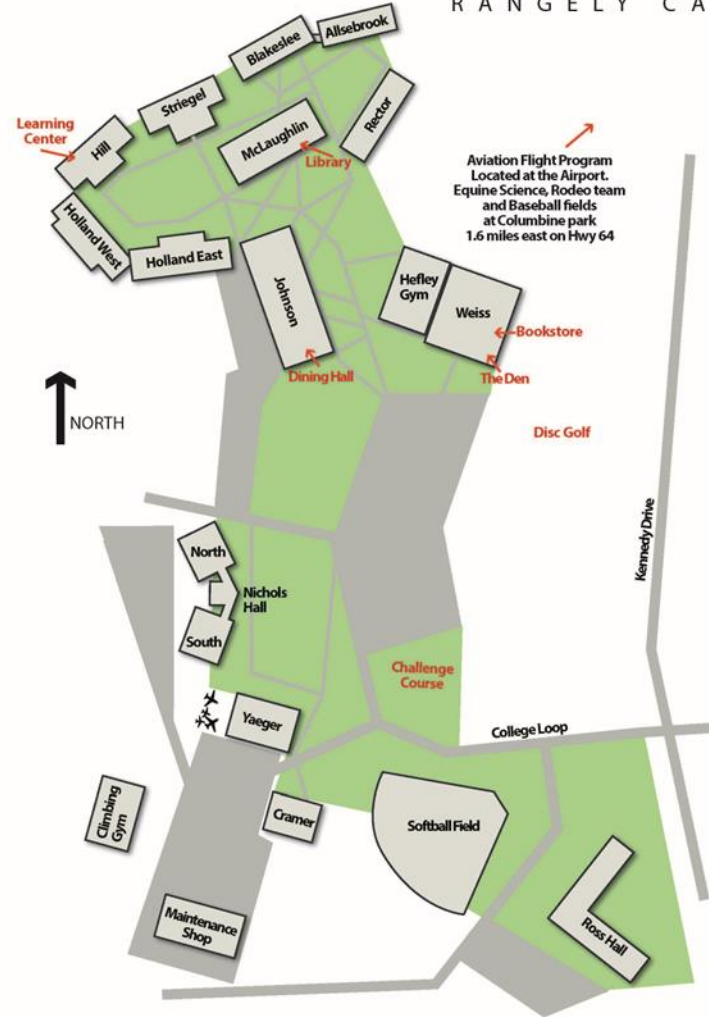
Data Center – Old Fiber Patch Panel

- Original Singlemode fiber line installed in 1993. Diminishing signal strength is requiring the phasing out of individual lines.
- The current network layout provides no redundancy.
- CNCC vulnerable to an interruption of in service to all buildings behind any fiber break.
- Current UPS's installed 10-15 years ago and have failed due to lightening strikes, power surges, etc.
- Currently, equipment is protected by common/basic surge protectors creating probability of future loss of usage, downtime and equipment damage.

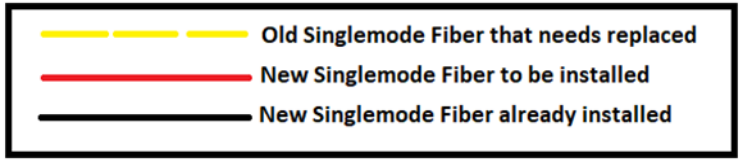
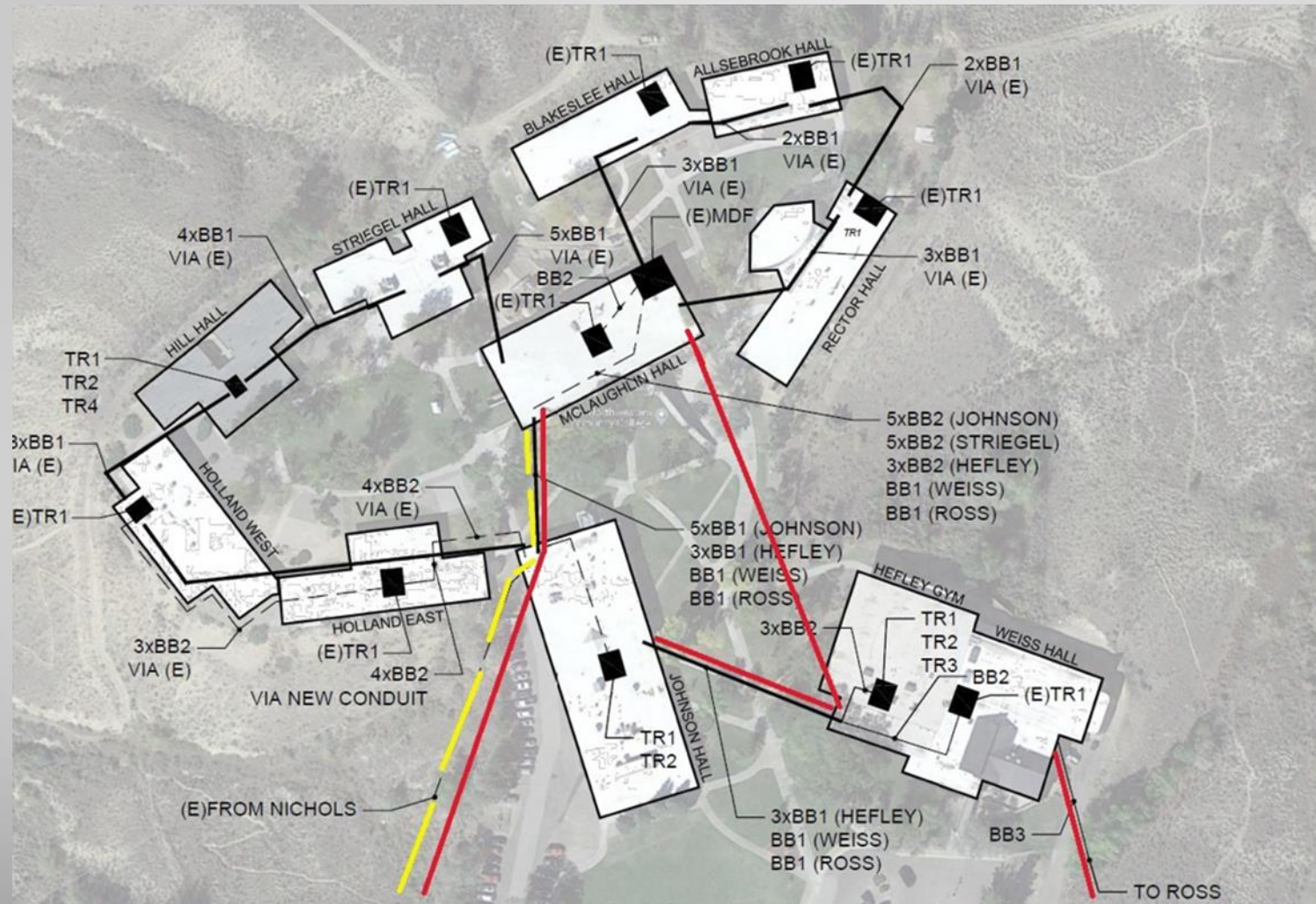


Scope of Work

- Install redundant data lines between CNCC Data Center and CNCC Rangely's south campus buildings.
- Purchase and install new Uninterrupted Power Supplies (UPS) in network closets (IDFs) in each of CNCC's buildings.

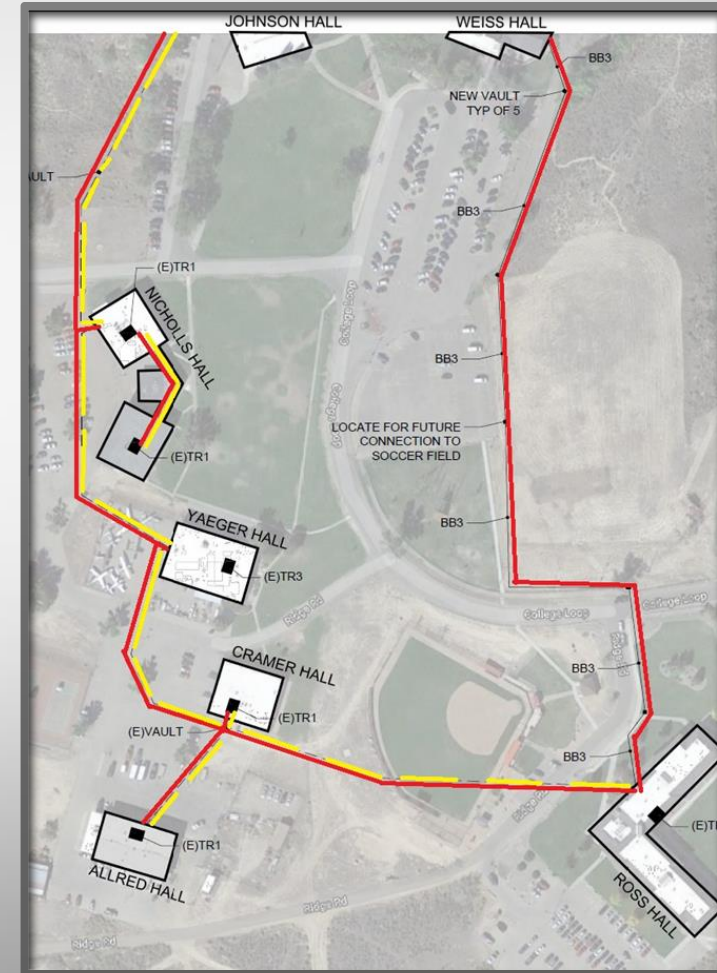
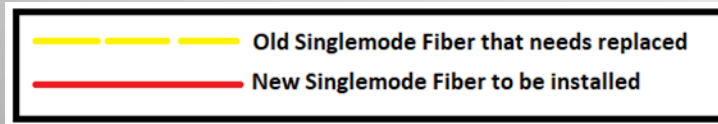


- Allsebrook**
Computer Labs
Classrooms
- Blakeslee**
Dental Hygiene
- Cramer**
Classrooms
- Hill**
Learning Center
Classrooms
- Johnson**
Community Education
Continuing Education
Dining Hall
Fine Arts
Student Services
Admissions
Cashier
Counseling
Financial Aid
Registrar
- McLaughlin**
Library (ground floor)
Administration
President
Business Offices
- Rector**
Science Labs
Classrooms
- Striegel**
Computer Lab
Classrooms
- Weiss**
Bookstore
The Den
Post Office
Weight & Cardio Rooms
Student Life
- Yaeger**
Aviation Maintenance
- Residence Halls**
Holland
Nichols
Ross



New Singlemode Fiber

***Access point to Rio Blanco County Fiber for offsite data center and Airport network connection.**



Return on Investment

- **Prevent Catastrophic System Outage**
 - One (1) fiber pathway for all Academic, Student Service and Administrative functions
 - Prevent loss due to decrease in student recruitment, retention and persistence, financial stability of the college, and ensure safety/security of students
- **Equipment Damage:**
 - Over last three (3) years, CNCC has invested over \$1 million in new servers, switches, phones, cameras and Wi-Fi.
 - Essential, costly equipment could be damaged or destroyed if not properly protected by Uninterrupted Power Supplies.
 - Reduce service downtime in event of lightening strike or power surge.



CNCC Data Center – New Fiber Installation



CNCC – South Campus Redundancy Upgrade

IT Capital Project

QUESTIONS?