

REGIONAL PARTNERSHIP GRANT ROUND 6 GRANTEE



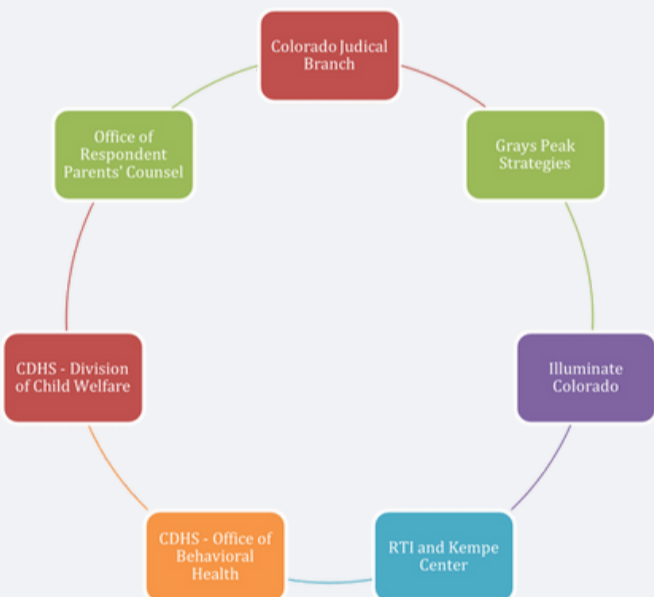
This project intends to improve well-being, permanency and safety for children by incorporating peer support groups into the innovative DANSR approach that is already successfully utilized across various Colorado counties to better manage cases with substance use concerns.



- Since 2007, Children's Bureau has awarded six rounds of RPG funding to 109 grant projects across 38 states, including tribal communities. In round 6 (2019), Colorado was one of 8 grantees this round.
- Grantees create "regional partnerships" aimed at improving the well-being, permanency, and safety outcomes of children, and the recovery outcomes for parents whose children are in or at risk of out-of-home placement associated with a parent or caregiver's SUD
- RPG is one of 3 Substance Use Provisions as a part of the Family First Prevention Service Act. Read more [HERE](#).
- Circle of Parents and The COPE project were listed in Colorado's Family First Prevention Plan.

State and Local level Partnerships

PROJECT PARTNERS



LOCAL COURTS AND COP-R IMPLEMENTATION SITES

- Garfield County/ Bergner Law Firm
- Montezuma County/ Piñon Project
- Arapahoe County/ Second Chance Center
- Fremont County/ Good Neighbor
- Larimer County/ Larimer Recovery
- Jefferson County/ Illuminate
- Denver County/ Mile High Behavioral
- Prowers, Baca, Cheyenne and Kiowa Counties/ Prowers County Public Health

What is DANSR?

Dependency and Neglect System Reform (DANSR) is an approach to managing cases, specifically high-risk cases involving substance use. The approach involves a set of 6 Principles. More information can be found [HERE](#).

- 1 Engage families immediately and universally identify substance use and other needs.
- 2 Families complete substance use and other assessments and begin treatment as soon as possible once needs are identified.
- 3 Enhance communication, collaboration, engagement, and integration of treatment information into the management of the case through the use of multi-disciplinary team staffing.
- 4 Provide timely judicial support and oversight to meet the individual needs of each family.
- 5 Enhance data collection and information sharing across the court, child welfare, and treatment.
- 6 State and local teams coordinate strategy at the systems level and participate in collaborative training

HOWEVER, CHANGES IN THE COURTS AND IN THE WAY THESE CASES ARE MANAGED MAY NOT BE ENOUGH:

enhancements to parents' ecosystems are vital to long term success...

THE NEED FOR SOCIAL SUPPORTS

13%

An empirical review of psychotherapy literature suggests that mental health or substance use treatment only accounts for 13% of an individual's change process.

87%

This means that 87% of the change process is due to extra-therapeutic or client factors including individual and environmental factors such as **social supports**.

CIRCLE OF PARENTS IN RECOVERY (COP-R) MODEL



This nationally recognized, evidence supported model aims to **INCREASE** all 5 protective factors in it's participants including social connections and parental resiliency.



Set up as a welcoming, adaptable and reliable environment, this group is meant to be non-judgmental and strengths-based. It is parent-led but professionally supported to ensure a trauma informed and safe experience.



To promote a family experience, dinner is provided at each in-person group, childcare is available, and a Children's Circle group will be funded at all RPG sites which will provide children with psychoeducational content delivered by a trained professional.



Listen to a podcast on the project and on the need for peer supports on Apple Podcasts or Spotify.

EVALUATION

The evaluation team from 2M Research and the Kempe Center will combine an outcome and process evaluation to achieve the following objectives:

- **What can we learn about the efficacy of the Circle of Parents in Recovery (CoPR) Model?** One major goal of this study to build critical evidence for the model in an effort to qualify Circle of Parents for submission to the national clearinghouse which would make the service eligible for federal reimbursement. This federal recognition would be one component of service provision that will impact Colorado's Families First integration next year.
- **What can we learn about outcomes for families in Colorado who attend CoPR and receive the DANSR approach?** in addition to understanding what happens to the families who receive the COPE intervention, the evaluation team will work to understand how the intervention influences child and family outcomes.
- **What can we learn about the impact of the DANSR approach on Colorado families?** This research will provide participating counties with a detailed understanding of clients participating in the outcome evaluation and the impacts of the COPE intervention and DANSR on parental substance abuse recovery, the permanency and safety of children and youth, and family functioning and child well-being.

What can you do? REFER!

Referral materials to Circle of Parents can be found here:

<https://www.grayspeakstrategies.com/cope-project-page>



Questions about DANSR:

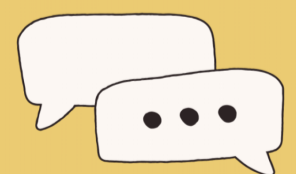
Megan Kearsley, COPE Project Director, State Court Administrator's Office
megan.kearsley@judicial.state.co.us

Questions about Circle of Parents:

Toni Miner, Family Support Program Manager Illuminate Colorado
tminer@illuminatecolorado.org

Questions about the evaluation process:

Dallas Elgin, PhD, Principal Investigator, RTI Research
delgin@2mresearch.com



CONTACT