

# Colorado Department of Education

## SMART Act Hearing

January 17, 2024



**COLORADO**  
Department of Education





## Welcome and Thank You

## Current Education Landscape

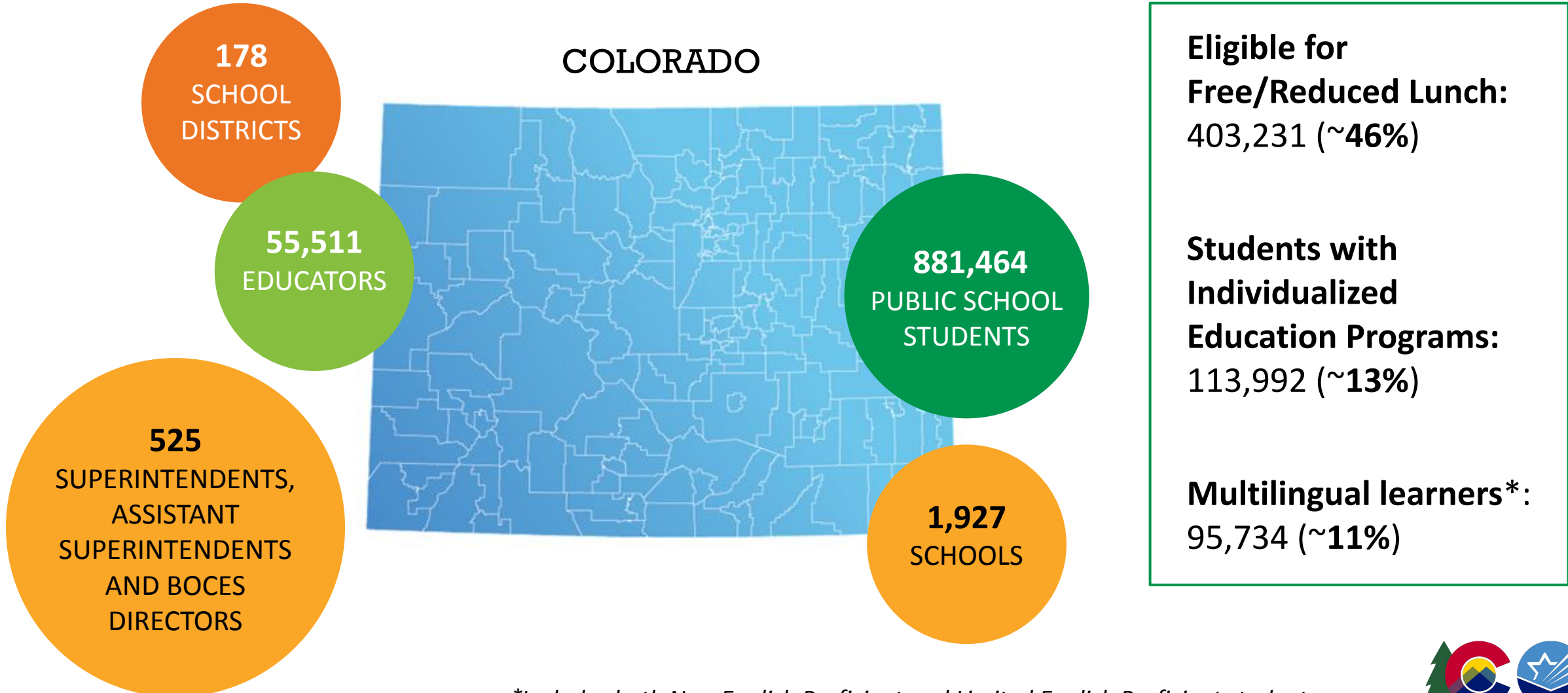
- Post-Pandemic Achievement and Growth
- Student & Educator Mental Health and Wellbeing
- Educator Recruitment and Retention
- Administrative Burdens

## Legislative Task Forces

## Close and Questions



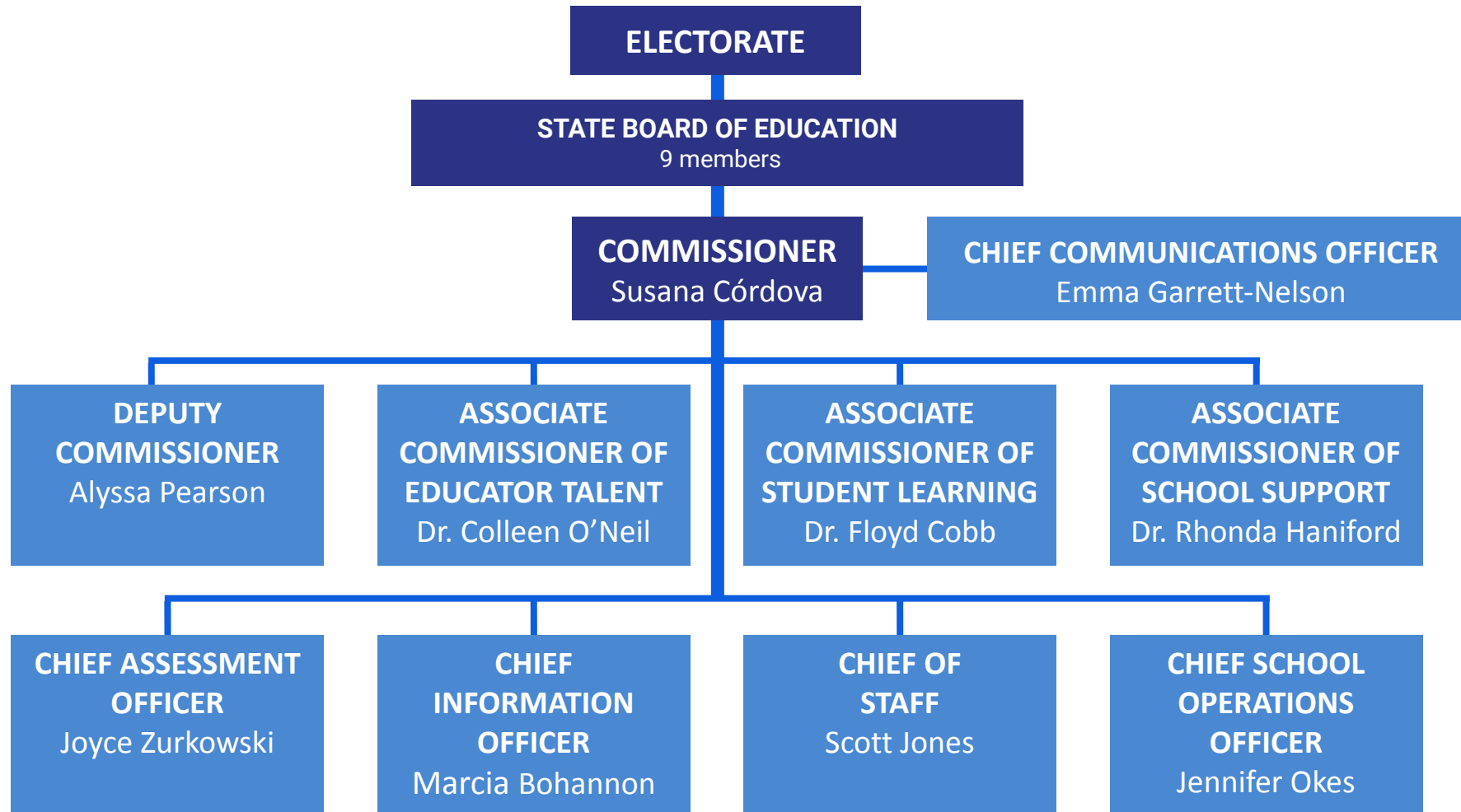
# Colorado Education By the Numbers

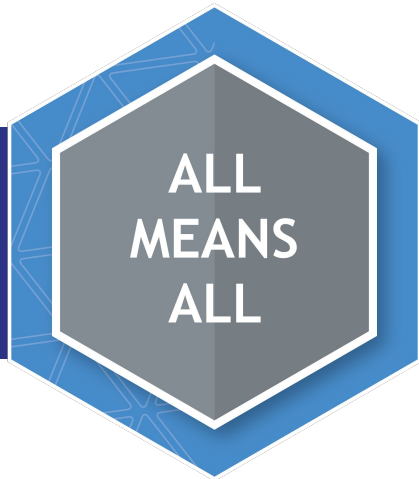


*\*Includes both Non-English Proficient and Limited English Proficient students*



# CDE Organizational Chart





Underpinning our success with each of our key initiatives will be our commitment to excellence with each of our core programs and operations. By holding ourselves to the highest degree of excellence in customer service and performance, we will effectively implement our key initiatives and accomplish our goals.

# Current Education Landscape

# Post-Pandemic Achievement and Growth – *Students statewide are experiencing slower than expected returns to pre-pandemic levels of academic performance and engagement.*

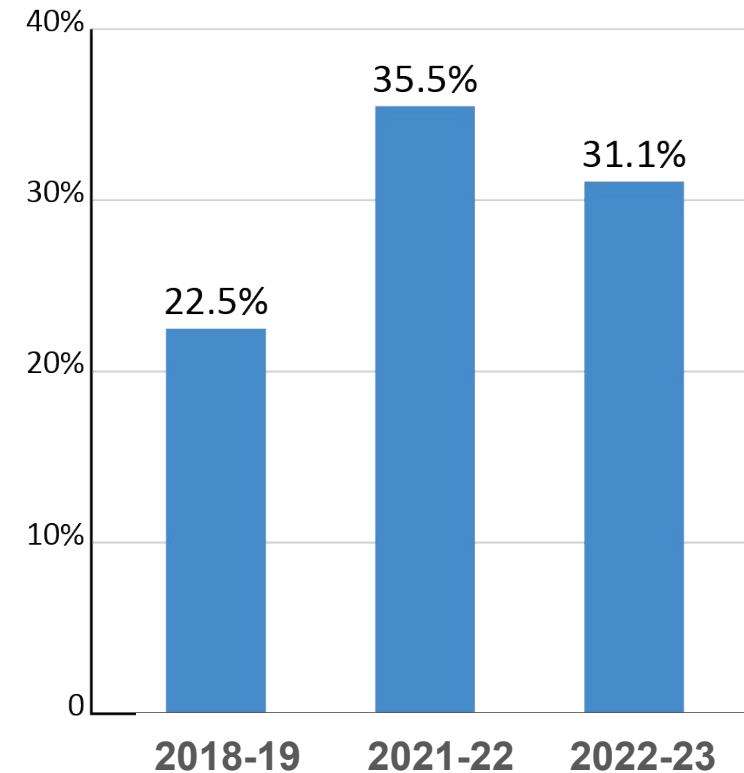
## School & District Performance

- Statewide academic data indicate mathematics achievement and growth has dropped significantly relative to pre-pandemic levels

## Performance Gaps

- Academic performance for multilingual learners continues to fall below state averages
- Gaps in academic performance persist for historically marginalized and underserved student groups

## Chronic Absenteeism



In 2023, 31.1% of all students missed more than 10% of enrolled days, identifying them as chronically absent. **This means 1 in every 3 students is chronically absent.**



# Post-Pandemic Achievement and Growth – CDE is supporting schools and districts with focused professional learning and funding for academic recovery and acceleration programs.

## High Impact Tutoring Grant - ESSER and State Funded



## Learning Cohorts



## Academic Accelerator Grant



## Ongoing READ Act Implementation

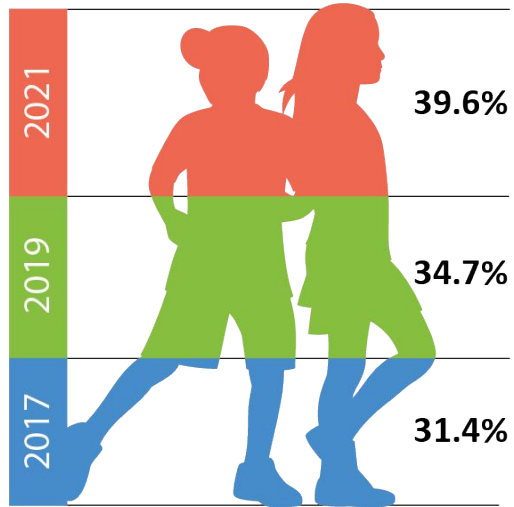


## Math Instructional Support

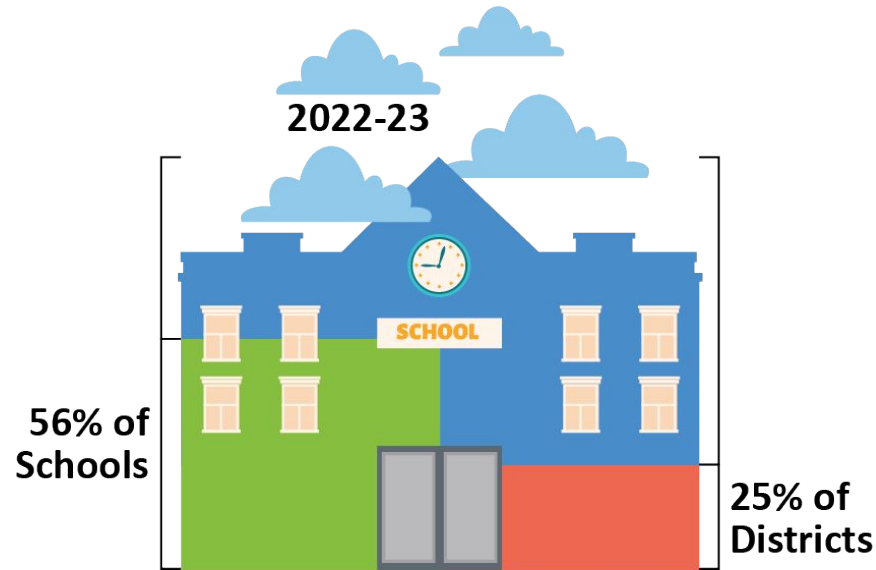




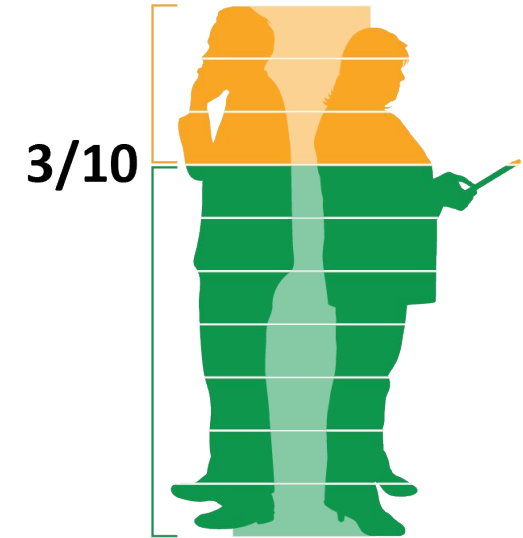
# Student & Educator Mental Health and Wellbeing – One of the greatest needs in Colorado schools is supports for student and educator mental health and wellbeing.



Percentage of students from the Colorado Healthy Kids survey who reported **feeling so sad or hopeless for two weeks or more** in a row that they stopped doing some usual activities.

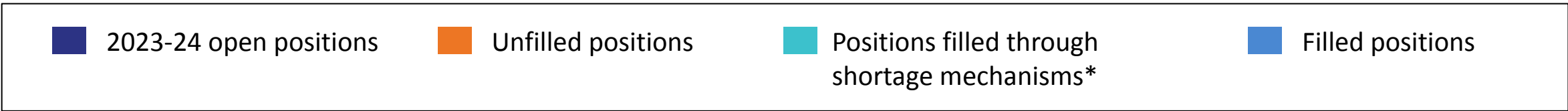
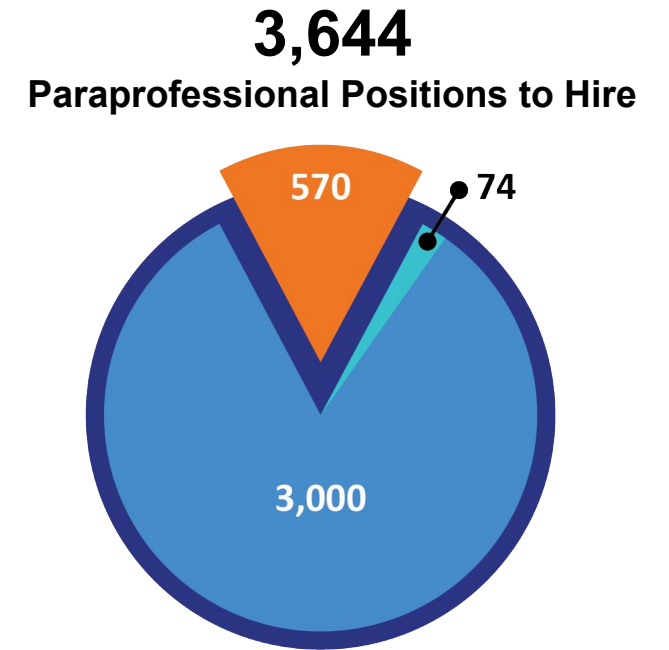
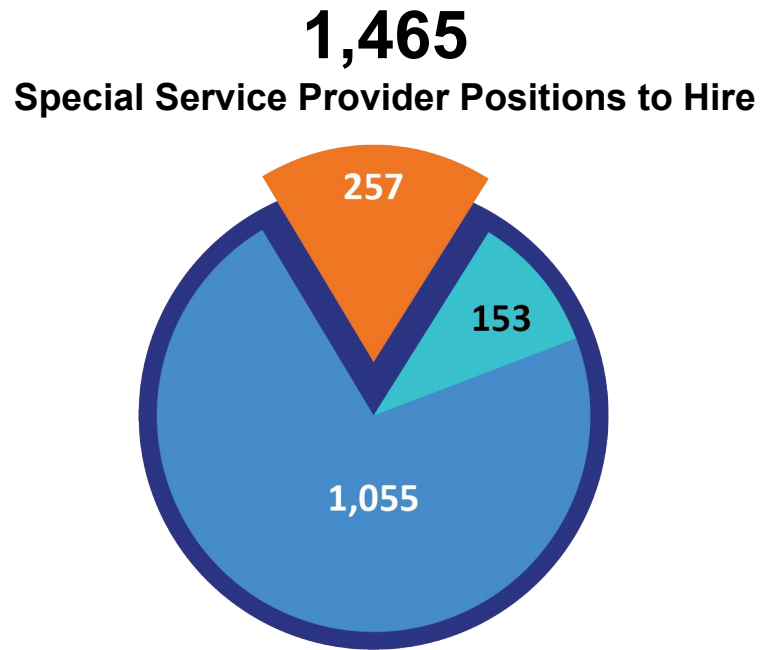
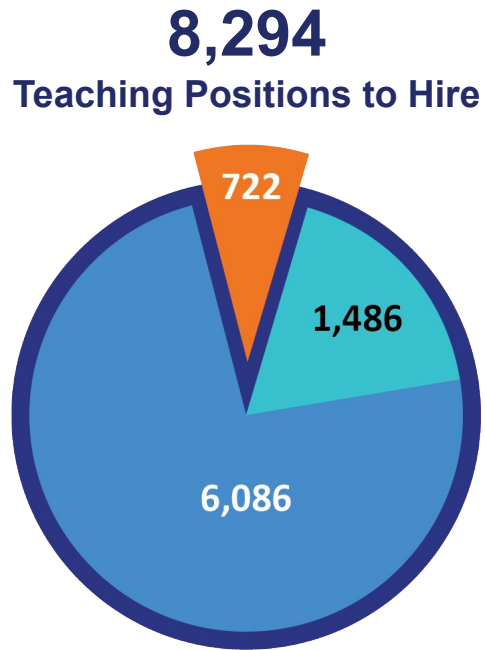


Unified Improvement Plans submitted by schools on the accountability clock for the 2022-2023 school year **included major improvement strategies focusing on student engagement.**



In the most recent Teaching & Learning Conditions in Colorado (TLCC) survey, 3 out of 10 surveyed staff (33.1%) stated that they were **not getting adequate social emotional support for themselves.**

# Educator Recruitment and Retention - School districts across the state are struggling to fill critical vacancies in student-serving roles.



\*Shortage mechanisms include anything that is not a traditional four-year pathway such as adjunct, alternative, apprenticeship, teacher of record, or substitute.



**Educator Recruitment and Retention** – *CDE is investing in programs and resources to support educator recruitment and retention and strengthen the educator talent pipeline.*

**Teacher Mentorship Grant Program**

**Educator Recruitment and Retention Grant Program**

**CDE Regional Recruitment and Retention Specialists**

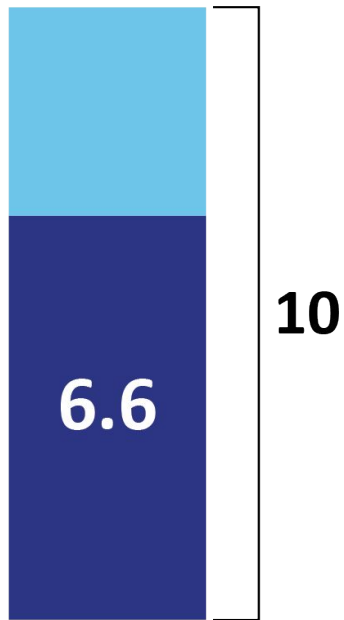
**Teach Colorado**

**Teaching and Learning Conditions in Colorado**



# Administrative Burdens – We are focused on improving services to our state’s school districts while reducing burdensome and redundant administrative requirements.

In a recent survey, Colorado Superintendents rated CDE an average of **6.6 out of 10** on "the policies and guidelines set by CDE are clear and helpful."



## COMMENTS:

"Guidelines are **clear but onerous**, especially for small districts."

"Less **bureaucracy.**"

"There is too much to keep track of, but clarity has improved."

"... there is a teacher shortage, so now we are **making it harder to be a licensed teacher** by requiring more professional development... In theory this is great, but **we are just begging people to teach.**"

"I marked this as a 5 [out of 10] because of the number of audits we are required to go through. I think improvement has been made in this area in that they seem more streamlined, but we have a **number of audits annually that seem excessive**; I think CDE should move to a monitoring model with much fewer random audits."

# Administrative Burdens – CDE manages the administration of 36 state grants serving hundreds of schools and districts across Colorado.

## Dropout Prevention

- Colorado Student Re-Engagement Grant
- Expelled and At-Risk Students
- Ninth Grade Success Grant Program

## Educator Workforce

- Educator Recruitment and Retention Program
- Quality Teacher Recruitment Grant
- School Leadership Program

## Exceptional Student Services

- Gifted Educational Universal Screening and Qualified Personnel
- Special Education Fiscal Advisory Committee

## Health

- Behavioral Health Care Professionals Grant Program
- Comprehensive Health Education Grant
- K-5 Social and Emotional Health Act
- Menstrual Hygiene Product Accessibility Grant
- Physical Education Instruction Pilot Program

## Instruction

- Colorado Academic Accelerator Grant Program
- Colorado High-Impact Tutoring
- Computer Science Education Grant
- Computer Science Education Grant for Teachers
- Dyslexia Pilot Program
- Early Literacy Grant

## More Options

- Accelerated College Opportunity Exam Fee
- Adult Education and Literacy
- Adult High School Program
- Automatic Enrollment in Advanced Course Grant Program
- Career Development Incentive Program
- Colorado Career Advisor Training Program
- Concurrent Enrollment Expansion and Innovation Grant Program
- FAFSA and CASFA Completion Grant
- School Counselor Corps Grant

## Quality Schools

- Local Accountability Systems
- School Transformation Grant

## Other

- BEST Capital Construction Grant
- Bullying Prevention and Education Grant
- Education Stability Grant
- Facility Schools Operational Services Grant
- Local School Food Purchasing Programs
- State Grants to Libraries

# Administrative Burdens – *We are working to reduce administrative burdens through a centralized and streamlined grants administration system.*



## Evaluate and improve grant administration and impact

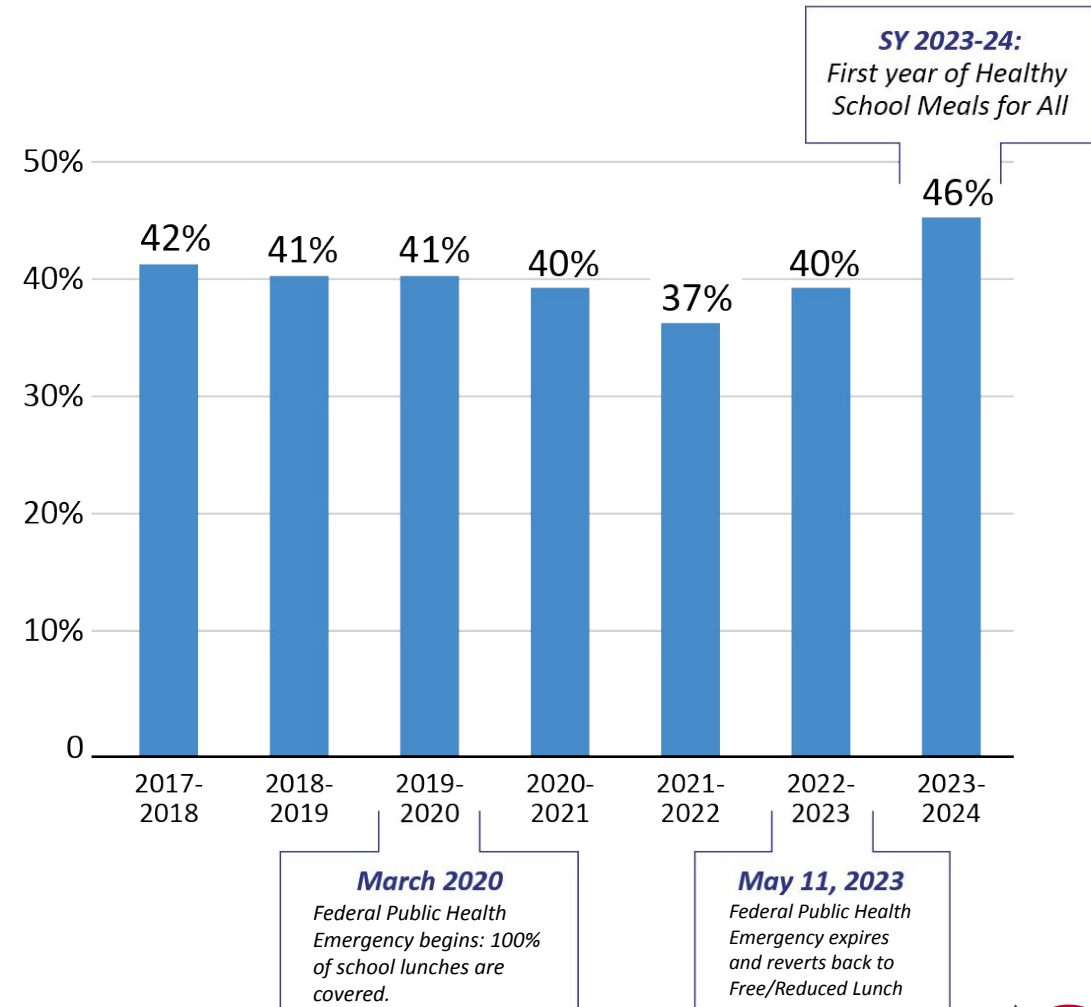
- Streamlined application processes
- Improved communication
- Comprehensive reporting
- Enhanced security

- Leverage grant funding and activities to best target high-leverage and/or evidence-based activities;
- Tie grant funding to identified state and district needs; and
- Streamline grant opportunities and administration internally and externally.

# Legislative Task Forces

# HB22-1202 - At-Risk Work Group

- HB22-1202 tasked the Department with convening a work group to develop a new student specific at-risk measure that incorporated Medicaid data and a neighborhood socio-economic status indicator.
- SB23-287 delayed implementation of the new at-risk measure and directed CDE to pilot implementation of the measure.
- A report will be submitted to the legislature later this month regarding the findings of the pilot.







## Recommendations Aligned to Four Categories:

### PROGRAM MODERNIZATION

- Umbrella of programs
- Reporting and metrics
- State Longitudinal Data System
- Accountability

### ACCESS & AWARENESS

- Single Source Online Platform
- Communication Strategy
- Career Coaching and Development
- Technology for Advising

### SUSTAINABLE FUNDING

- Consistent and Reliable Funding Mechanism
- Innovation Fund to Build Capacity

### PARTNERSHIPS

- Regional Intermediaries
- Invest in Sector Partnerships
- Support Employer Engagement



**Final Report will be submitted  
no later than January 31, 2024**



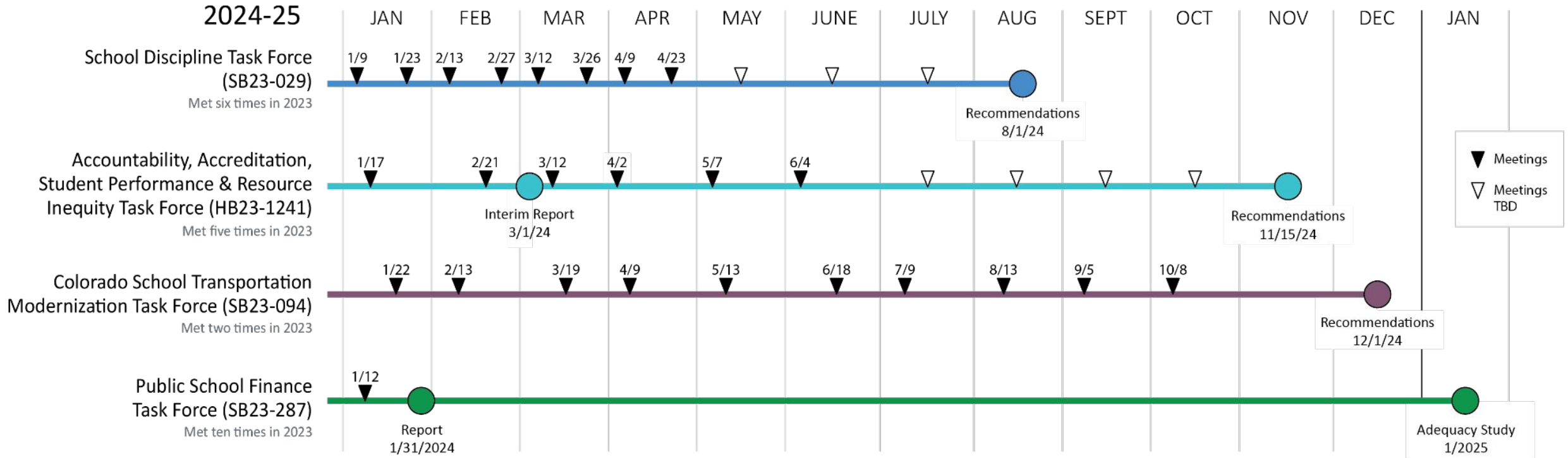
**The Task Force adopted  
approximately 17 recommendations**

*Addressed 6 topic areas including:*

- Adequacy Study Parameters
- Charter School Institute Mill Levy Override
- Student Need Factor
- Multiplicative Indexes
- Cost of Living Factor
- Size Factor

# Continuing Task Force Work

2024-25



# Thank You

