

Capitol Annex Renovation Project **CBAC Art Presentation**

Joshua Jordan, Senior Project Manager,
Cumming Group

Mary Gangal, Client Success Manager, NINE Dot
ARTS

Denise Josephs, Director of Curations, NINE Dot
ARTS

& exterior sculpture artist **Kasia Polkowska**

CUMMING
GROUP NINE dot ARTS

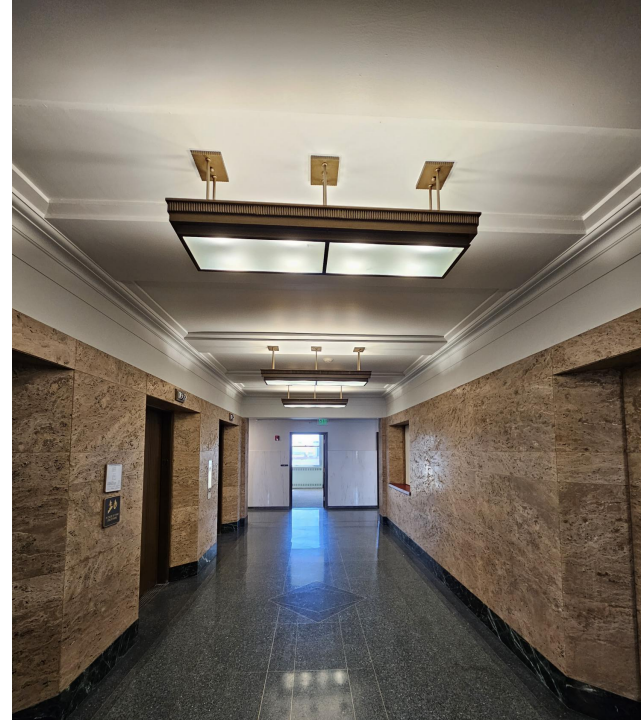


Agenda

1. Background & Construction
2. The Art Selection Process
3. The Selection Committee
4. Art Goal & Selection Process
5. Art Locations
6. Exterior Artwork Selection & Artist

Background

- We are here today to gain your feedback on our selected exterior artwork.
- This artwork is part of a much larger construction renovation project and Capitol Building initiative.
- The Capitol Annex Building is a historic State Building, and the renovation is befitting of its reputation.

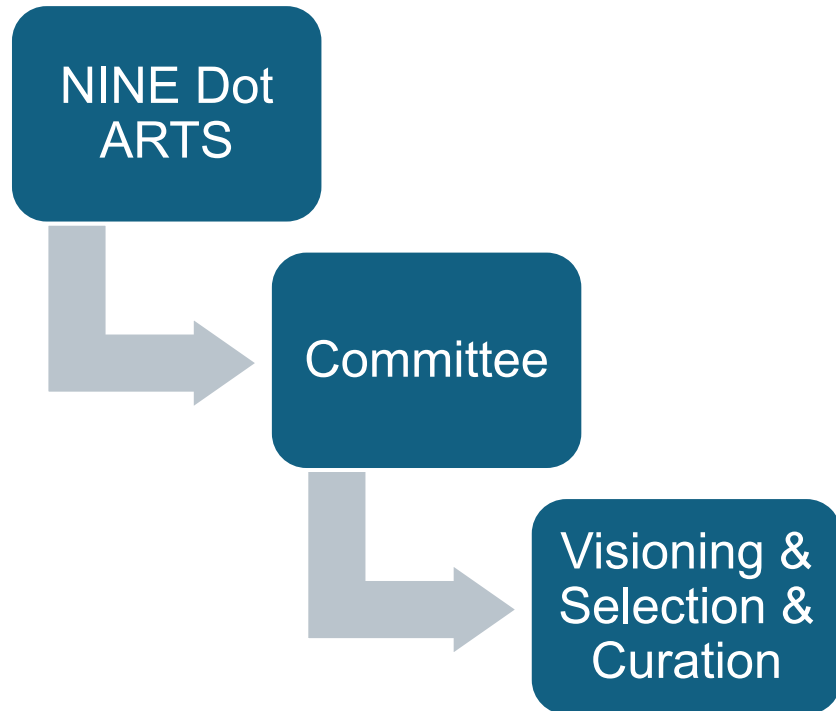


The Construction

- Construction Start: November 2022
- Construction Finish: September 2025
- Full electrification & modernization
- LEED Gold
- Staff Move-Ins: October – December 2025
- Artwork was deemed a necessary part of the renovation project.
- Public Arts Program participation is not required, however, all artwork will be registered with the State of Colorado Public Arts Archive through Colorado Creative Industries.



The Art Selection & Curation Process



Voting Committee (all members are State employees)

- **Adrian Schulte**, Communications Director, Department of Personnel & Administration
- **Amanda Clapham**, Lead Capitol Education and Art Curator, Visitor Services Team, Legislative Council Staff
- **Esther Van Mourik**, Assistant Secretary of the Senate
- **Jeanette Chapman**, Senior Research & Committee Analyst, Capitol Building Advisory Committee
- **Jennifer Berman**, Assistant Director, Office of Legislative Legal Services
- **Vicky Lane**, Human Resources Manager, Office of the State Auditor
- **Freddie Southwell**, Facilities Security Unit, Colorado State Patrol
- **Kaitlin Lucas**, Architect, Capitol Complex Architects, DPA

Art Goal & Selection Criteria

Visitors to the Annex building will be greeted by a striking new art collection, featuring vibrant artworks and prints **primarily from Colorado artists**. This thoughtfully curated collection harmonizes with the building's distinctive architecture, drawing inspiration from its rich Art Deco design.

By blending history with contemporary creativity, the collection will enhance the space through creative placemaking—honoring the legacy of the building and its workers while embracing a forward-looking vision. The result is a seamless fusion of past and present, where modern art breathes new life into a historic setting.

Primary Committee Visioning Themes &

Selection Criteria:

- Welcoming
- Unifying
- Colorado Focused
- Forward Thinking

Art Locations - Exterior



Art Selection - Exterior



Artist: Kasia Polkowska

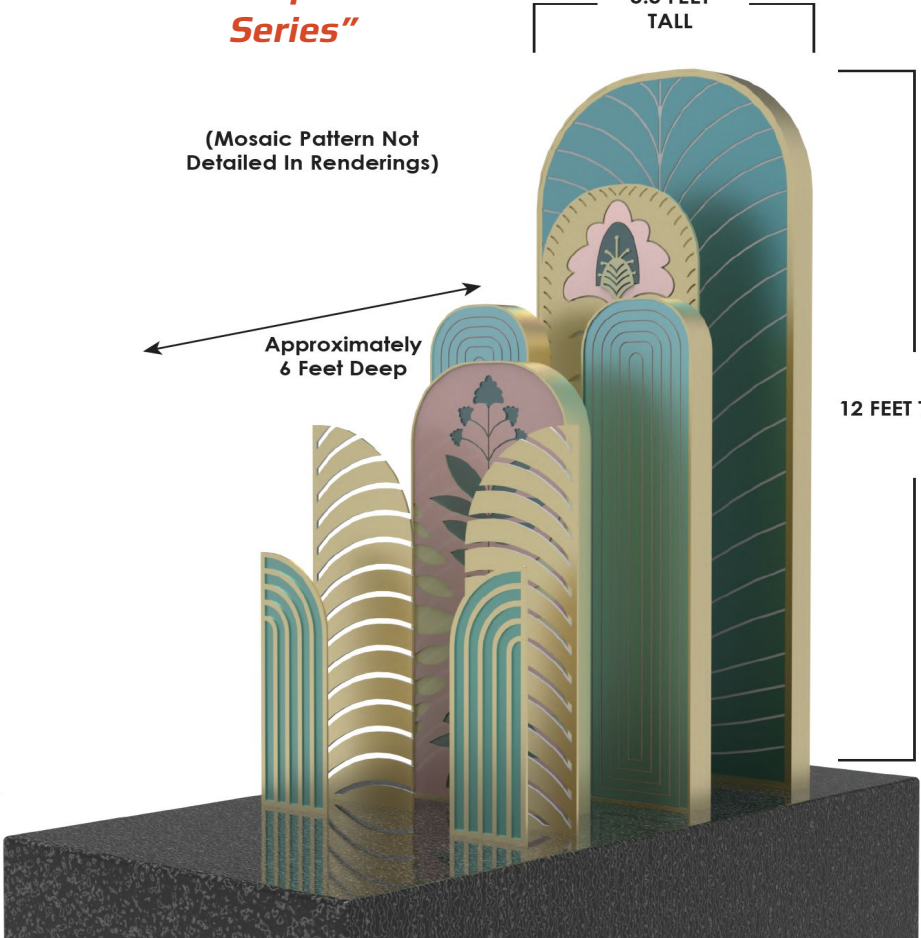
"Capitol Annex Arches Series"

5.5 FEET TALL

(Mosaic Pattern Not Detailed In Renderings)

Approximately 6 Feet Deep

12 FEET TALL



Concept to Realization

Artist: Kasia Polkowska



Art Selections - Interior

Artists: Varied, CO-based

