

AT&T Colorado

*Expanding reliable service
and improving public safety*

Guillermo Lambarri
Director, External Affairs – Colorado
July 2024

©2024 AT&T Intellectual Property. AT&T and globe logo are registered trademarks and service marks of AT&T Intellectual Property and/or AT&T affiliated companies. All other marks are the property of their respective owners.

AT&T Proprietary (Internal Use Only) - Not for use or disclosure outside the AT&T companies except under written agreement

Investing in Colorado



AT&T has invested in our Colorado communications networks, our people and local communities for 119 years.

NEARLY
\$90 million

generated in local and state taxes by AT&T operations in Colorado in 2022.

NEARLY **160**



Public safety agencies and organizations in nearly 160 cities across Colorado are staying connected with FirstNet, Built with AT&T as of April 2024.

MORE THAN
\$875 million

invested by AT&T in its best-in-class wired and wireless networks in Colorado from 2019–2023.



812



upgrades made in 2021 - 2023 including new cell sites, addition of wireless and wired network capacity and new broadband network connections in Colorado.

MORE THAN
1000



AT&T employees working in Colorado as of April 1, 2024.

MORE THAN

\$4.1 million

contributed by AT&T and the AT&T Foundation from 2021 - 2023 through giving programs in Colorado.

Please visit <https://www.attconnects.com/colorado/> for more information.

© 2024 AT&T Intellectual Property - AT&T Proprietary (Internal Use Only)

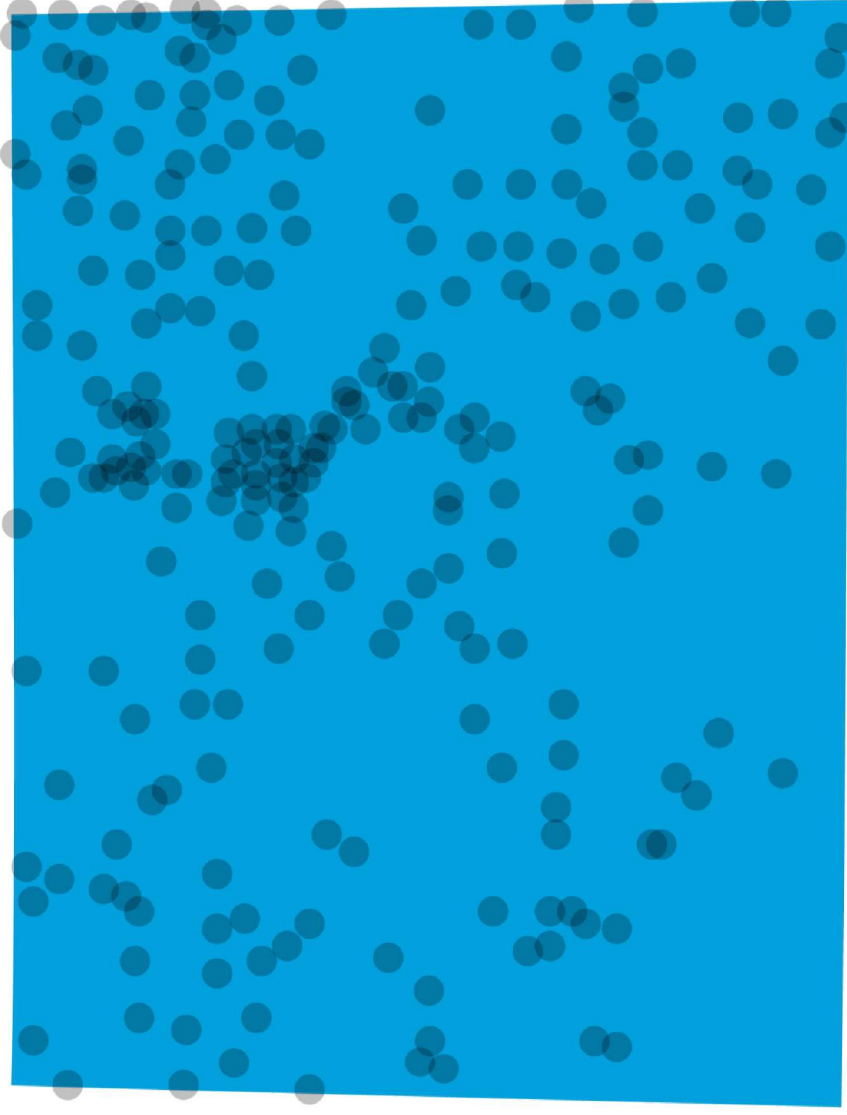
AT&T Colorado

New Cell Sites On-Air

2019 - 2024

IMPROVEMENT AREAS INCLUDE:

- Denver Metro Area
- Colorado Springs
- Pueblo
- Northern Colorado
- Mountain Communities
- Plus, additional Roaming Capacity



Note: This visual is for illustrative purposes only and is not representative of the exact locations of new site builds in Colorado or the coverage area of individual sites. Availability is not guaranteed and visuals are subject to revision. For more information on available coverage, please visit: www.att.com/5G/coverage-map

Community Impact

Addressing the digital divide across Colorado.

Girls Inc. (Denver) – 100 laptops, City of Denver and tech lab contribution

Monte Vista School District, MV Kids Club, Tech Center Contribution (San Luis Valley) – 100 laptops and contribution for tech learning lab

Loveland Public Library Digital Literacy (Northern, CO) – Training and 50 Laptops

Denver Office of Economic Development (Denver) – **Work Ready Denver** and **Centro de los Trabajadores** – Contribution and 700 laptops for workforce training



Strengthening & Enhancing

Network Deployment in Key Locations



Glenwood Canyon

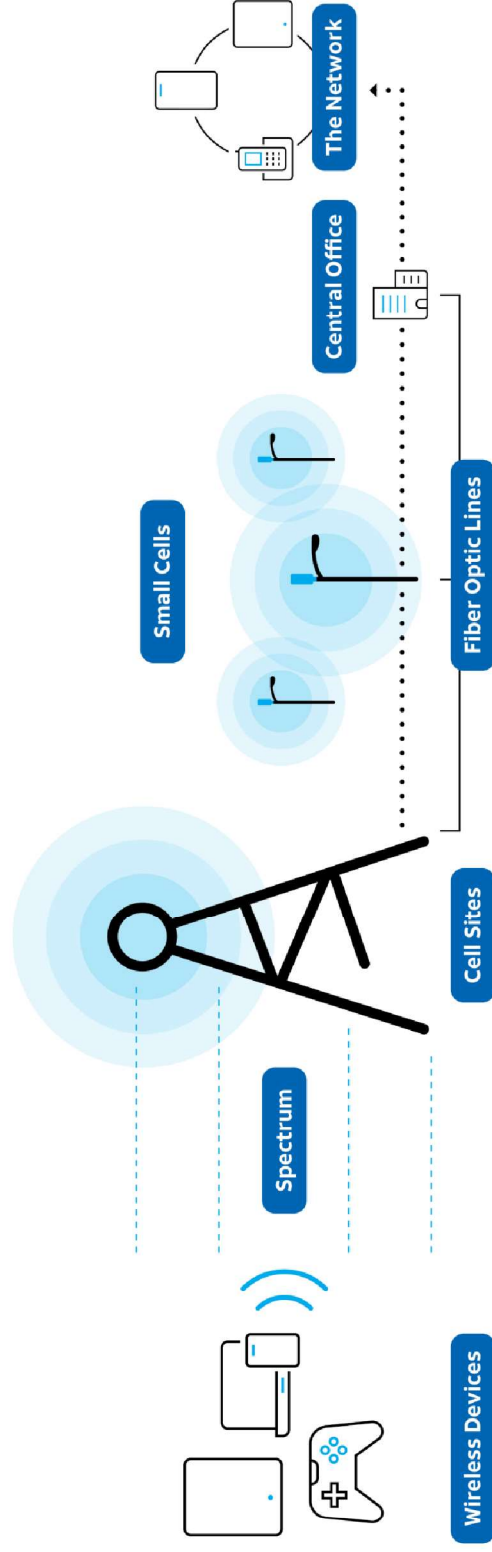


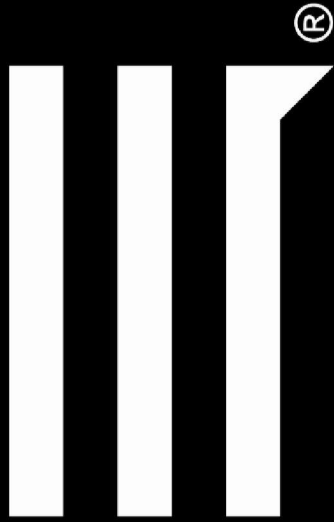
Lyons Estes Park



Clear Creek Canyon

How Networks Work





FirstNet is the nationwide public safety broadband network, services and solutions dedicated to first responders and those who support them.

It is more than a network, including advanced services, applications and purpose-built devices.

We are accountable for keeping your lines of communication open – with dedicated mission critical solutions to modernize public safety.

FirstNet in Colorado

In Colorado, we're connecting public safety agencies and organizations in nearly 160 cities across the state, including:

- Alamosa
- Aurora
- Boulder
- Breckenridge
- Castle Rock
- Colorado Springs
- Commerce City
- Denver
- Durango
- Ft. Collins
- Ft. Morgan
- Pueblo
- Steamboat Springs
- Vail

We've also rolled out Band 14 on more than 900 sites across Colorado to provide public safety with truly dedicated coverage and capacity when they need it.

Connecting Colorado First Responders

2020 Cameron Peak ↓

2021 Marshall Fire ↓

2022 NCAR Fire ↓



Challenges

Common challenges for industry network deployment



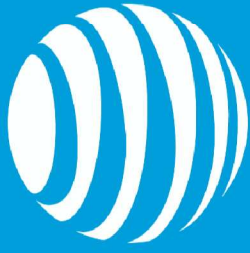
Urban areas

- Strict Wireless Code: Zoning Restrictions/Height Restriction
- Public opposition
- Rapid population growth
- Technology limitations/ older building materials



Rural areas

- Terrain
- Fiber availability
- Power availability
- Public Lands



AT&T