

Adams State University



Capital Development Committee Presentation

December 13th, 2023



Adams State University- Team Members

- David Tandberg, Ph.D., President
- Bruce DelTondo, Director of Construction Management

Introduction and Overview - Dr. Tandberg



The San Luis Valley and Adams State

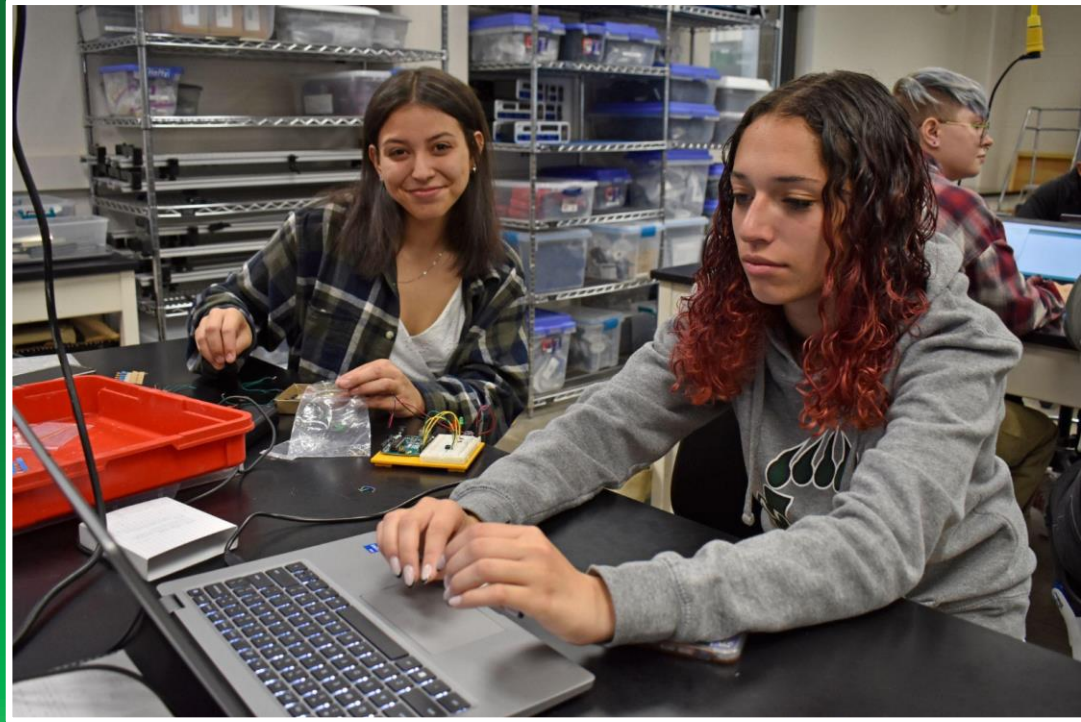


Where Our Students Come From and Who We Serve



Our Student Population

- **Adams State enrolls the largest share of low-income students in Colorado.**
 - 12% of our students come from the bottom quintile of household income alone
 - 45% Pell Grant eligible
 - 54% of Full-time First-time
- **Adams State has the most diverse campus in Colorado**
 - 52% of the student body identifies as BIPOC
 - 38% Hispanic/Latino



Structural Barriers

- The pandemic induced learning deficit in Colorado has produced *double digit* gaps in Math and English proficiency for **low-income** and **minority** students
- Over 20% of our students arrive needing remedial Math, English, or both
- 50-70% of our students are First Generation (depending on counting)



**60% of students attend a college or university within 1 hour of home,
Adams State is 2 hours from nearest university**

Median household income

- San Luis Valley \$45,644
- Colorado \$80,184

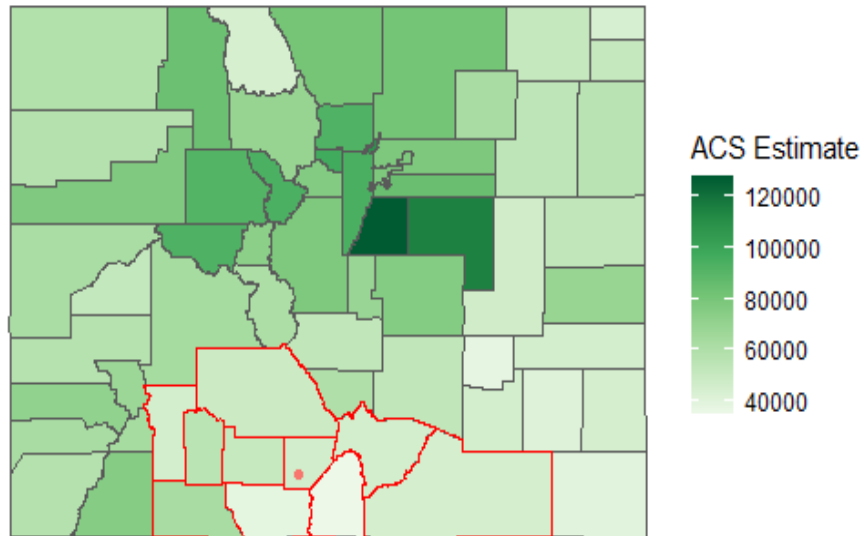
Poverty Rate

- San Luis Valley 16.0%
- Colorado 9.6%

Educational Attainment*

- San Luis Valley 21.6%
- Colorado 35.9%

Median Household Income by County



Data source: 2021 5-year ACS, US Census Bureau

*% of population 25-plus with a bachelor's degree or higher

Capital Construction Request



Adams State University

Summary of Request for FY 24/25

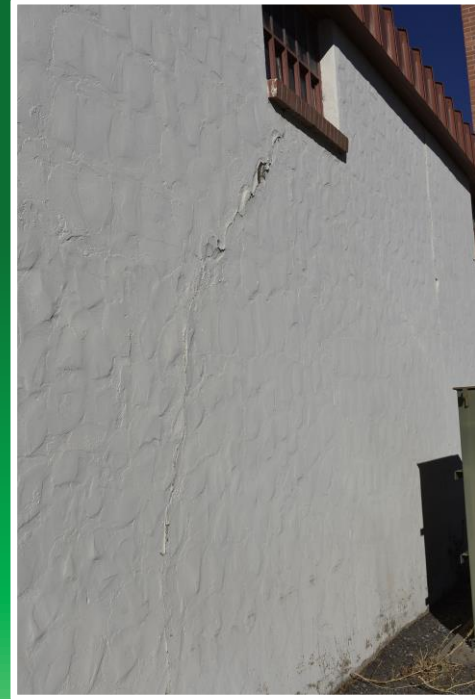
- Capital Construction Project
 - Facilities Services Center - New Building
 - Priority 2 request since FY 19/20
 - State Facility Condition Index score of 14

New Facilities Services Building

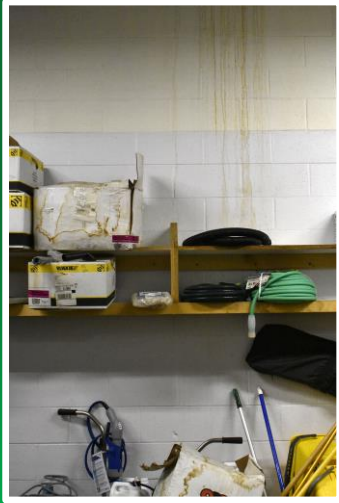
Exactly the type of project the state should be funding

- Essential to the operations of the University
- Not the type of project that attracts private giving

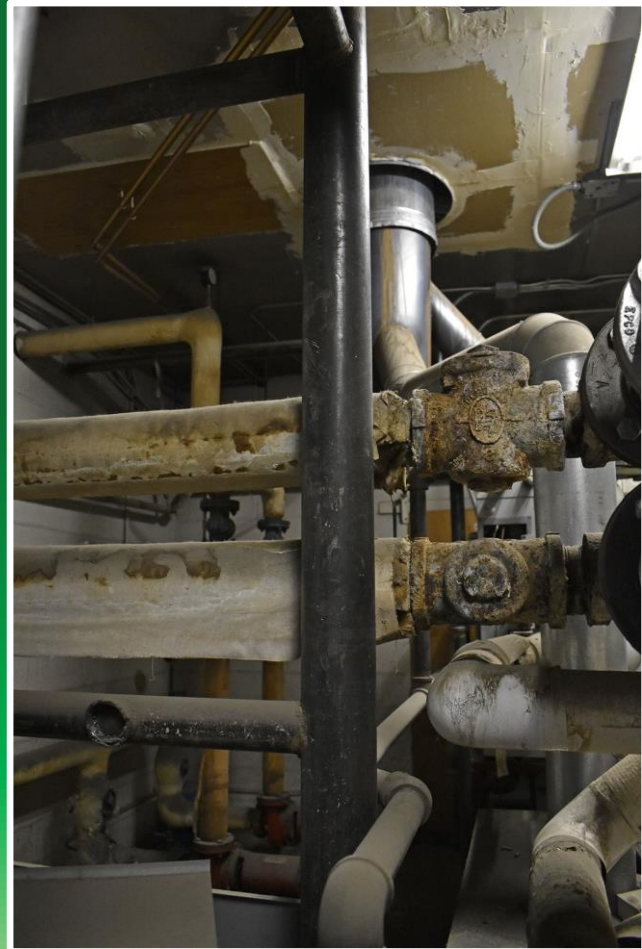
Structure Damage



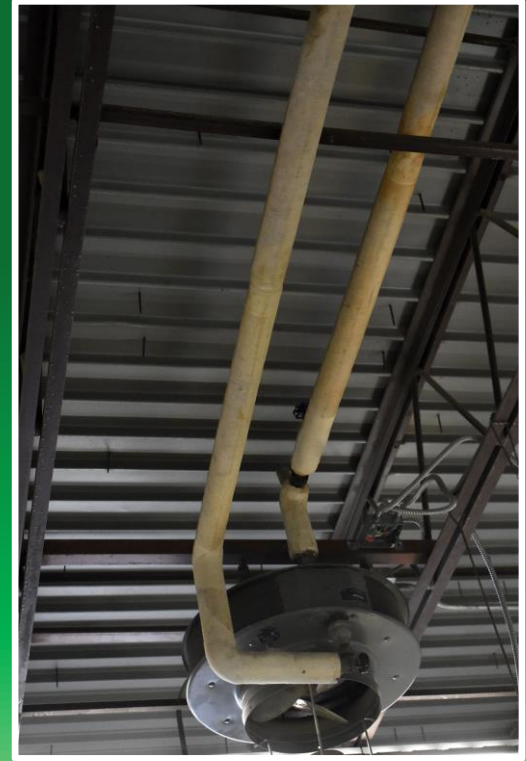
Roof Leaks – Throughout Building



Antiquated Boiler Unsafe and Beyond Repair



Antiquated Heating System



Ventilation System Beyond Repair



Facilities Service Employees



At Adams State, Everyone is an Educator

Everything a student experiences while on campus teaches them something about themselves



Technical Specifics – Bruce DelTondo

Facilities Services

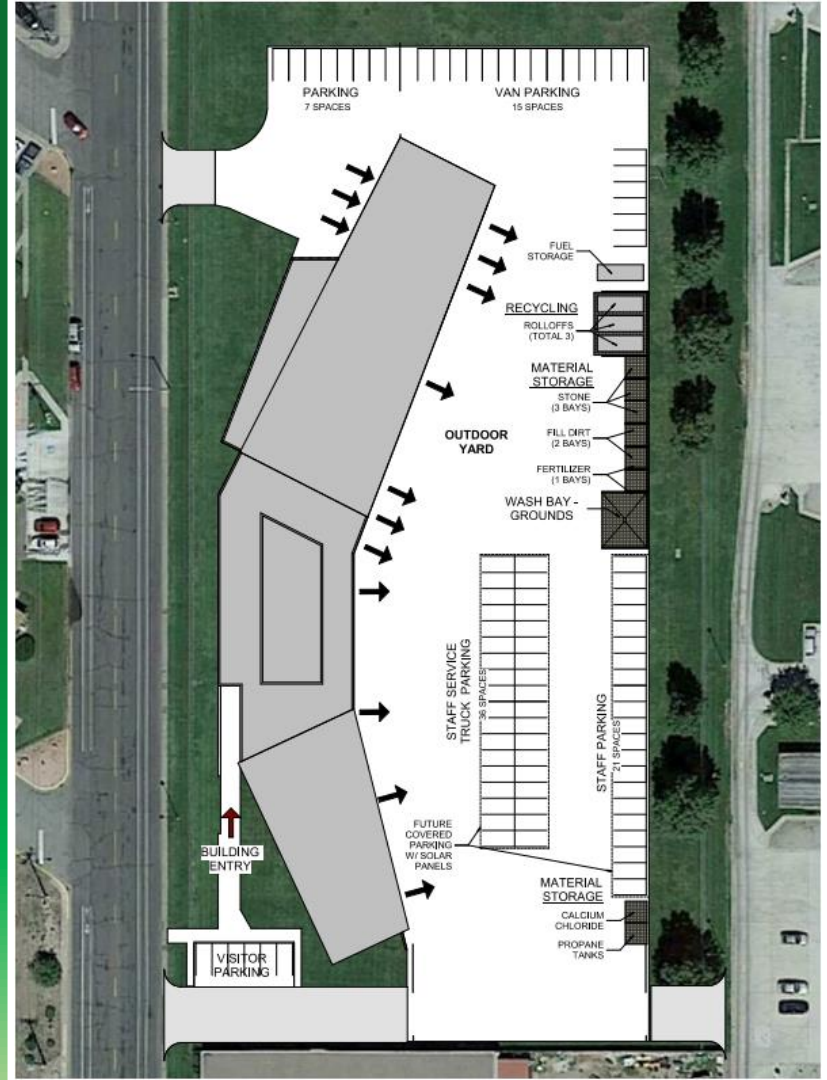
- Originally building was built as an armory in 1947, with additions dating back to 1968
- Central location for all Facilities Services including Grounds, Custodial, Motor Pool, and Structural Trades



- Requesting to build a new facility rather than addressing six major concerns:
 - Lack of adequate space
 - Concerns for Staff Health and Safety
 - Outdated/End-of-Life building systems
 - Continuity of Operations
 - Operational Costs and Energy Conservation
 - Master Plan Goals

New Building

Campus Map





Happy Holidays



Questions?

Thank you!

