

The logo for the Early Childhood Leadership Commission (ECLC) features the letters 'E', 'C', 'L', and 'C' in a bold, sans-serif font. The 'E' is orange, the 'C' is green, the 'L' is pink, and the final 'C' is blue. The letters are arranged horizontally and are slightly overlapping.

ECLC

Early Childhood Leadership Commission

SMART Act Hearing

WHO WE ARE

- Colorado's federally recognized **STATE ADVISORY COUNCIL** on Early Childhood
- Created in 2010; **REAUTHORIZED** by HB22-1295 until 2025

§ 26.5-1-302 EARLY CHILDHOOD LEADERSHIP COMMISSION - MISSION

(1) There is created in the state department the early childhood leadership commission. The purpose of the commission is to ensure and advance a **comprehensive service delivery system for pregnant women and children from birth to eight years of age** using data to improve decision-making, alignment, and coordination among federally funded and state-funded services and programs for pregnant women and young children and their families.

At a minimum, the comprehensive service delivery system for pregnant women and children must include services in the areas of **prenatal health, child health, child mental health, early learning, and family support and parent education.**

PARENTS

SCHOOL DISTRICTS

COUNTY GOVERNMENTS

PROVIDERS

PUBLIC HEALTH

FOUNDATIONS

HEALTH

HEAD START

BUSINESS

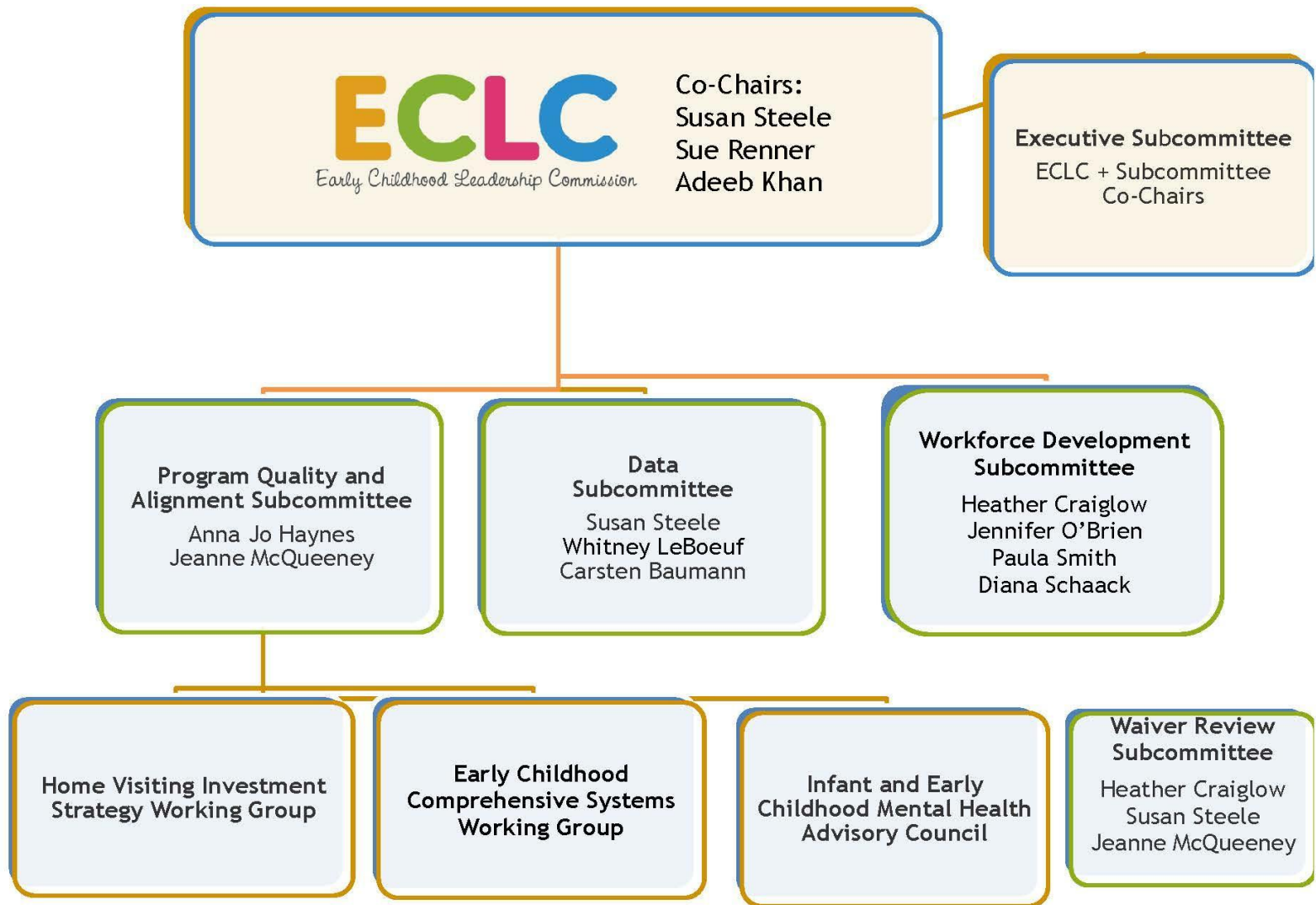
WHO WE ARE

21 Members
including
6 STATE
AGENCIES

WHO WE ARE

- Statutory Duties Include:
 - Advise and make **RECOMMENDATIONS**
 - Assist public and private entities with **ALIGNMENT**
 - Monitor strategies to increase **ACCESS, QUALITY** and **EQUITY** of early childhood services and supports

ORGANIZATIONAL STRUCTURE



DEPARTMENT OF EARLY CHILDHOOD & UNIVERSAL PRESCHOOL RECOMMENDATIONS - APPROVED BY ECLC



[Full Report](#)

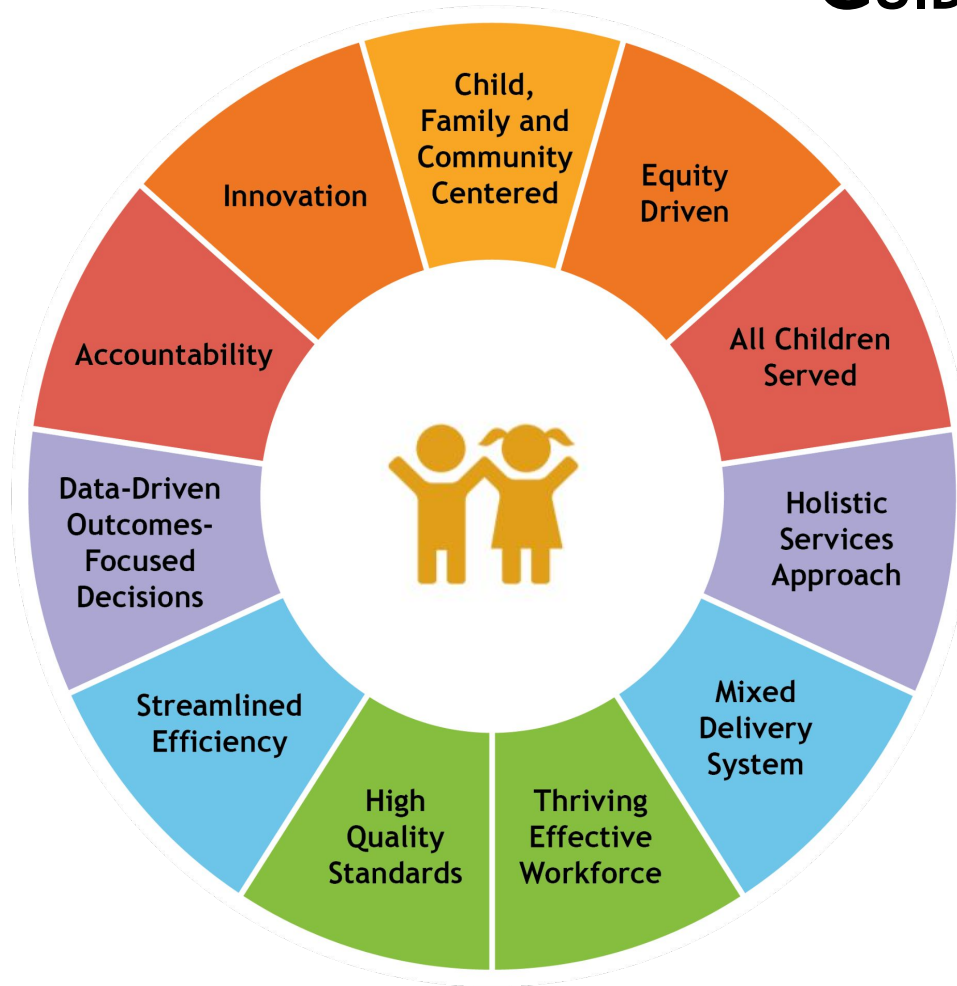
Executives Summaries in [English](#), [Spanish](#) and [Arabic](#)



[Full Report](#)

Executives Summaries in [English](#), [Spanish](#) and [Arabic](#)

GUIDING PRINCIPLES



The CDEC and UPK reports centered on the guiding principles adopted by the ECLC

ECLC 10-YEAR STRATEGIC PLAN



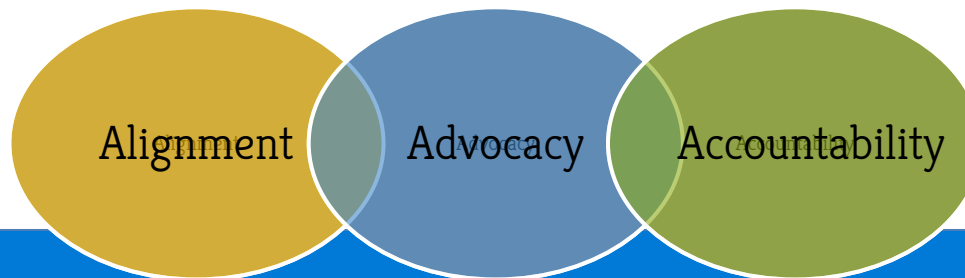
Colorado is successful in administering a system of comprehensive early childhood care, education, and supports so that *all families can easily identify, navigate and access services for their children.*



Colorado recruits, retains, and equitably compensates a diverse and qualified early childhood workforce *that provides quality care, education, and supports to children and their families.*



Colorado's early childhood system has the data needed to make evidence-based decisions and the funding resources to put best practices and plans into place, so *all communities have what is needed to best support children and families.*



REVISED EARLY CHILDHOOD COLORADO FRAMEWORK

Early Childhood Colorado Framework

A SHARED VISION

For more information visit: earlychildhoodframework.org

If WE BELIEVE



PRINCIPLES

Equity Driven

All Children Served

Child, Family, and Community Centered

Holistic Services Approach

Thriving, Effective Workforce

Mixed Delivery System

High Quality Standards

Innovation

Streamlined Efficiency

Data-Driven, Outcomes-Focused Decisions

Accountability

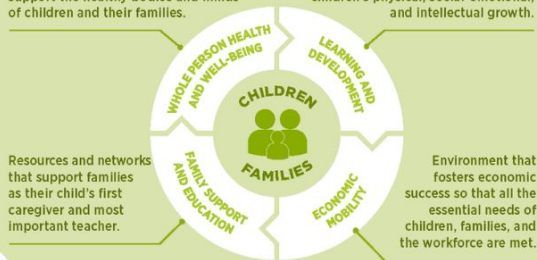
And BUILD A STRONG SYSTEM



EARLY CHILDHOOD SYSTEM

Comprehensive services to fully support the healthy bodies and minds of children and their families.

Early care and education that nurtures children's physical, social-emotional, and intellectual growth.



WORKFORCE

Early childhood professionals who are diverse, equitably compensated, and prepared to serve in the many settings involved in child health, development, and education.

LEADERSHIP

A strong underlying network of leaders to make timely and responsive decisions about programs and policies.

FUNDING

Abundant resources to fully meet the needs of children, families, and communities.

DATA & RESEARCH

Information to better understand the early childhood system and plan future actions that lead to improved, sustainable, and more equitable outcomes.

COLLABORATION

All elements working together—in local communities to the state level—toward a shared vision for all of Colorado's young children.

It WILL LEAD TO



OUTCOMES



Access

All children and families have access to a range of early childhood services that are culturally relevant, meet their needs and preferences, and are equitably allocated and available.



Quality

Every young child and family experiences a high-quality environment that supports all areas of well-being, affirms all aspects of their identity, and leads to equitable opportunities.



Alignment

All the components of the early childhood system are aligned and coordinated so families are able to easily identify, navigate, and receive services.

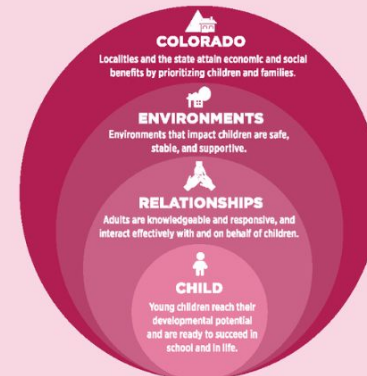
The FUTURE OF COLORADO



VISION

ALL CHILDREN ARE VALUED, HEALTHY, AND THRIVING

IMPACT



LOOKING FORWARD

1 Support development of Colorado's Statewide Early Childhood Strategic Plan

2 Endorse and Implement Colorado's Comprehensive Early Childhood Workforce Plan

3 Advise on the statutorily required Evaluation of CDEC

4 Continue to support implementation of CDEC and Universal Preschool

5 Champion the new *Early Childhood Colorado Framework*

THANK YOU!



For more information:
www.earlychildhoodcolorado.org

Shannon Wilson
shannonm.wilson@state.co.us
720-603-3460

