



CCI

COLORADO COUNTIES, INC.

Educate · Advocate · Empower

House
Transportation,
Housing & Local
Government
Committee

January 21, 2025

Reagan Shane, Legislative &
Policy Advocate – 303.859.9288

Meghan MacKillop, Legislative
Liaison – 720.308.0672

What's a county, anyway?



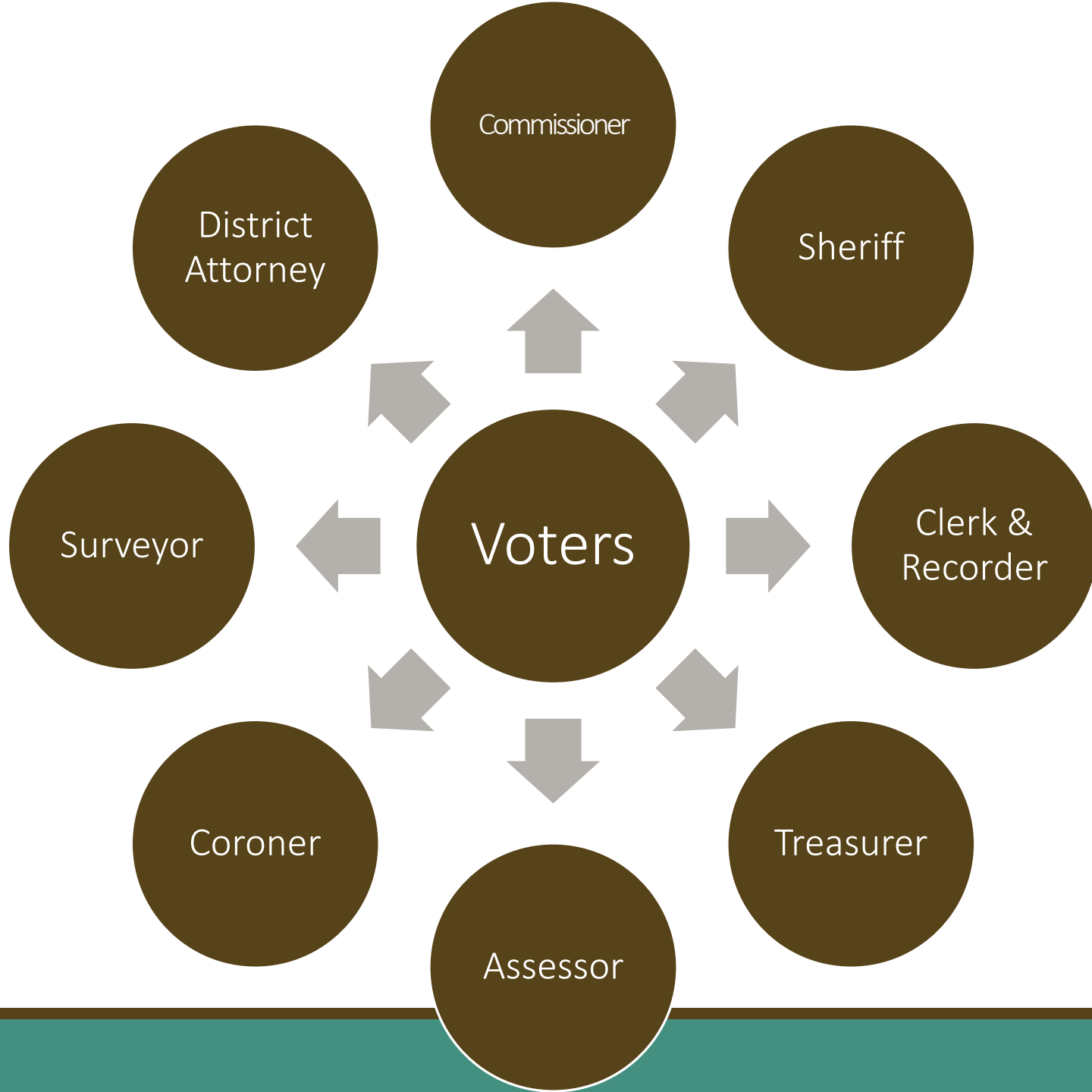
Carries out the State's policies & programs



Limited powers



Commissioners: Administrative,
Budgetary, Policy-Making



Role of County Government



Elections



Property assessment and taxation



Human services and public health



Law enforcement and public safety



Courthouses and district attorneys



Land use regulation and planning



Road and bridge construction/maintenance



Emergency management (wildfire, flood, etc.)

What is CCI?

■ Eastern ■ Front Range ■ Mountain ■ Southern ■ Western



Thank You