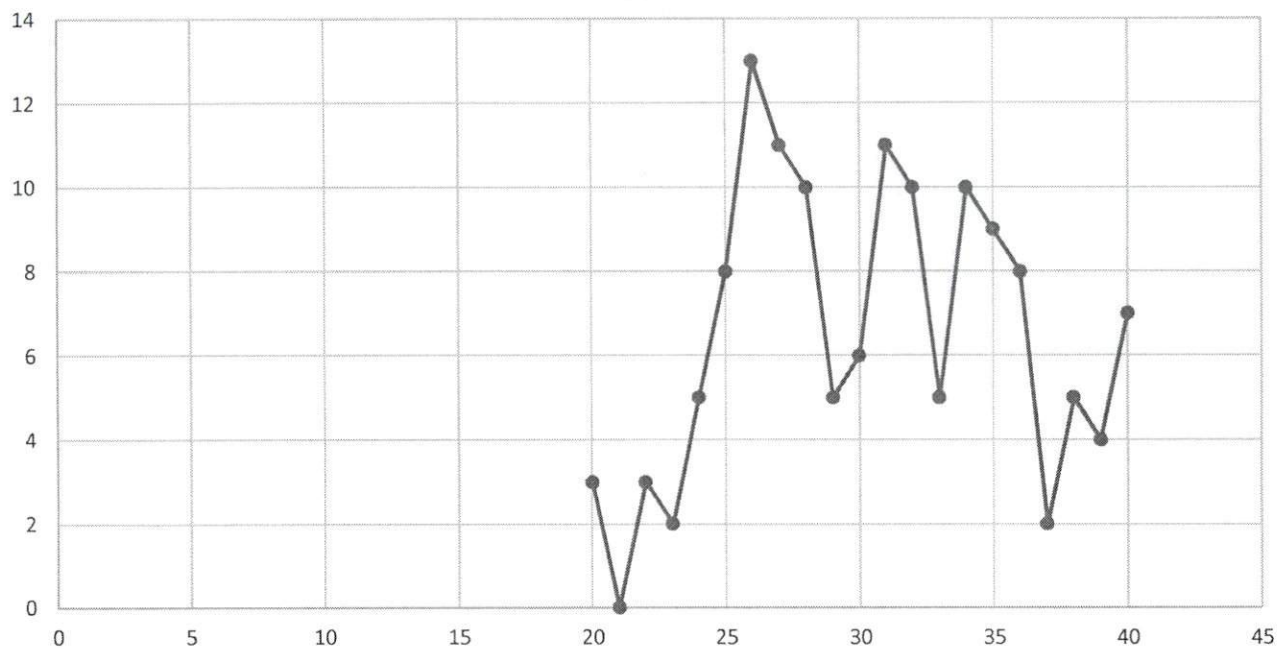


Colorado State Analysis

N = 137

Age Distribution



<i>Min</i>	<i>Max</i>	<i>Mean</i>	<i>Median</i>
20	40	31	31

Gender

<i>Male</i>	44	32%
<i>Female</i>	89	65%
<i>Transgender</i>	0	0%
<i>Prefer not to answer</i>	3	2%
<i>Other</i>	1	1%
<i>Total</i>	137	100%

Education

<i>Less than high school</i>	0	0%
<i>High School</i>	20	15%
<i>Associates or Technical Certification</i>	6	4%
<i>Bachelor's Degree</i>	83	61%
<i>Master's Degree or equivalent</i>	26	19%
<i>Doctorate or equivalent</i>	2	1%
<i>Total</i>	137	100%

Do you currently farm?

Yes	106	77%
No	30	22%
No Response	1	1%

Farm Role

I am a farm owner	36
I am a hired farm manager	14
I am a hired farm worker	17
Other (please specify)	23

Did you grow up on a farm?

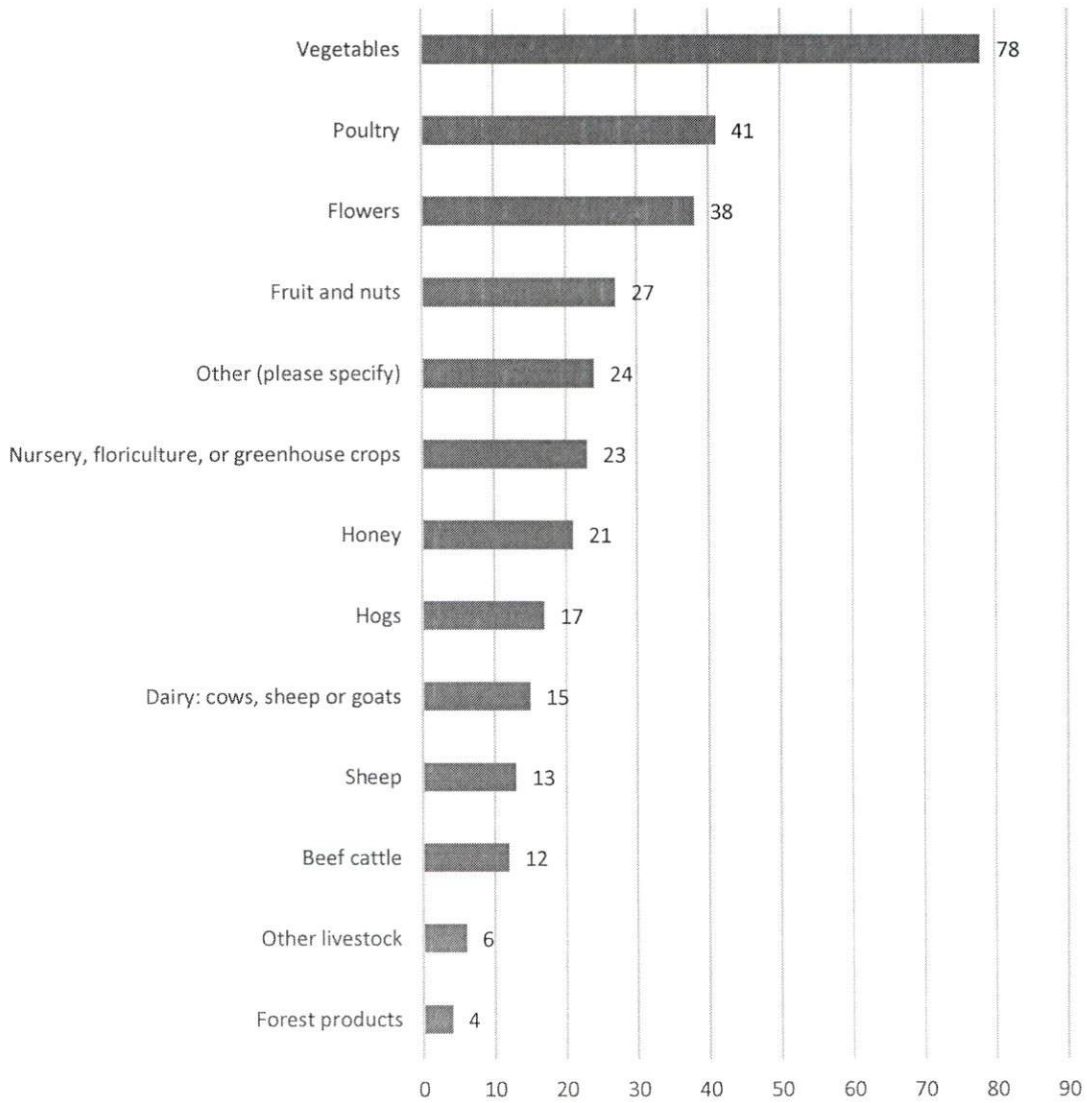
Yes and I still farm there	6	6%
Yes, I still farm there and farm somewhere else	3	3%
Yes and I farm somewhere else	2	2%
No	87	82%
No Response	8	8%
Total	106	100%

Farm Size

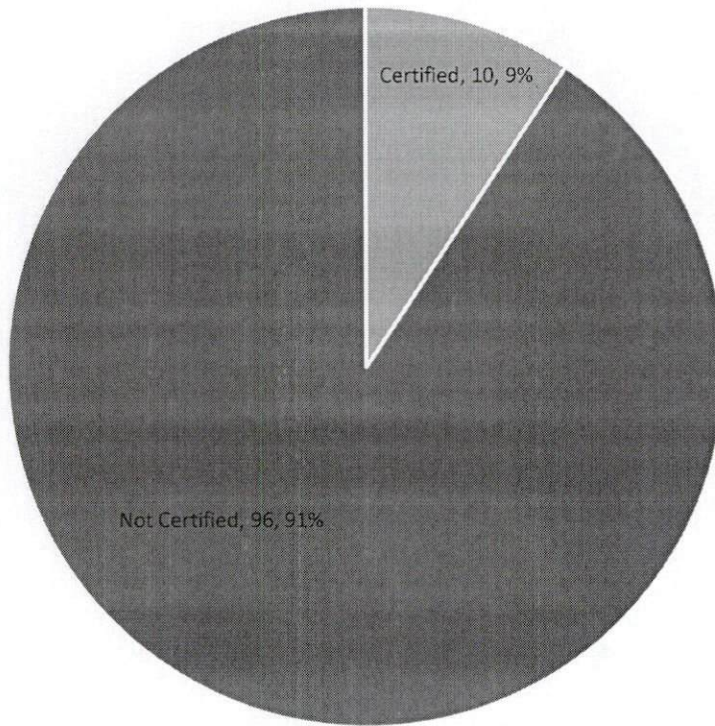
Acres Owned			
Min	Max	Mean	Median
0.1	300	45	10

Acres Rented			
Min	Max	Mean	Median
0.25	6000	211	3

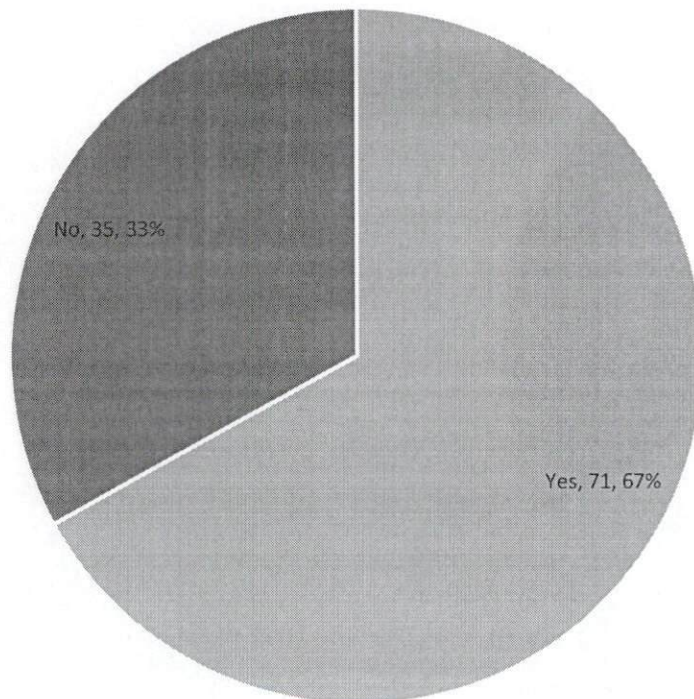
What are farms producing?



USDA Certified Organic Farms



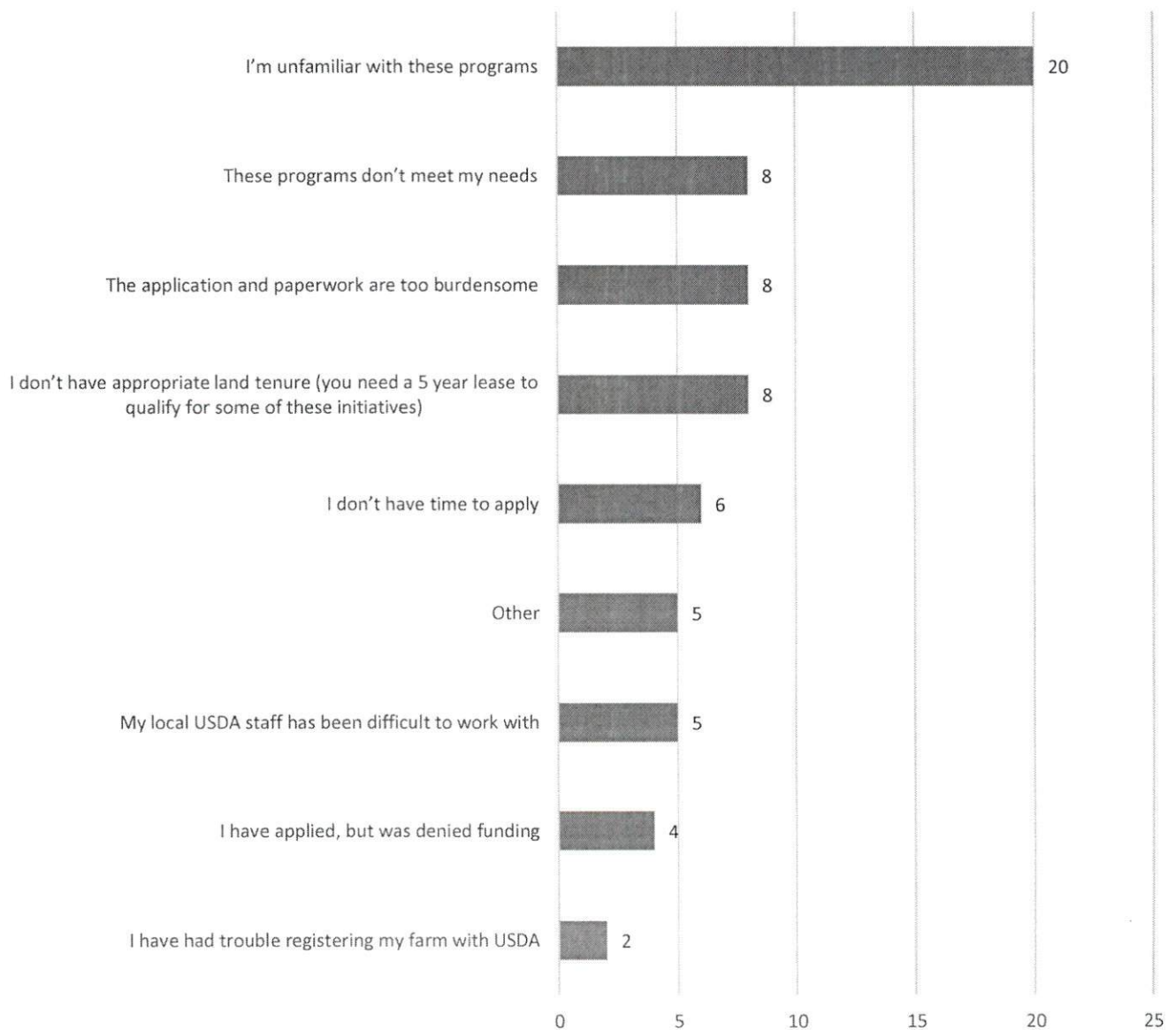
Do you associate your farming practice with the word "organic"?



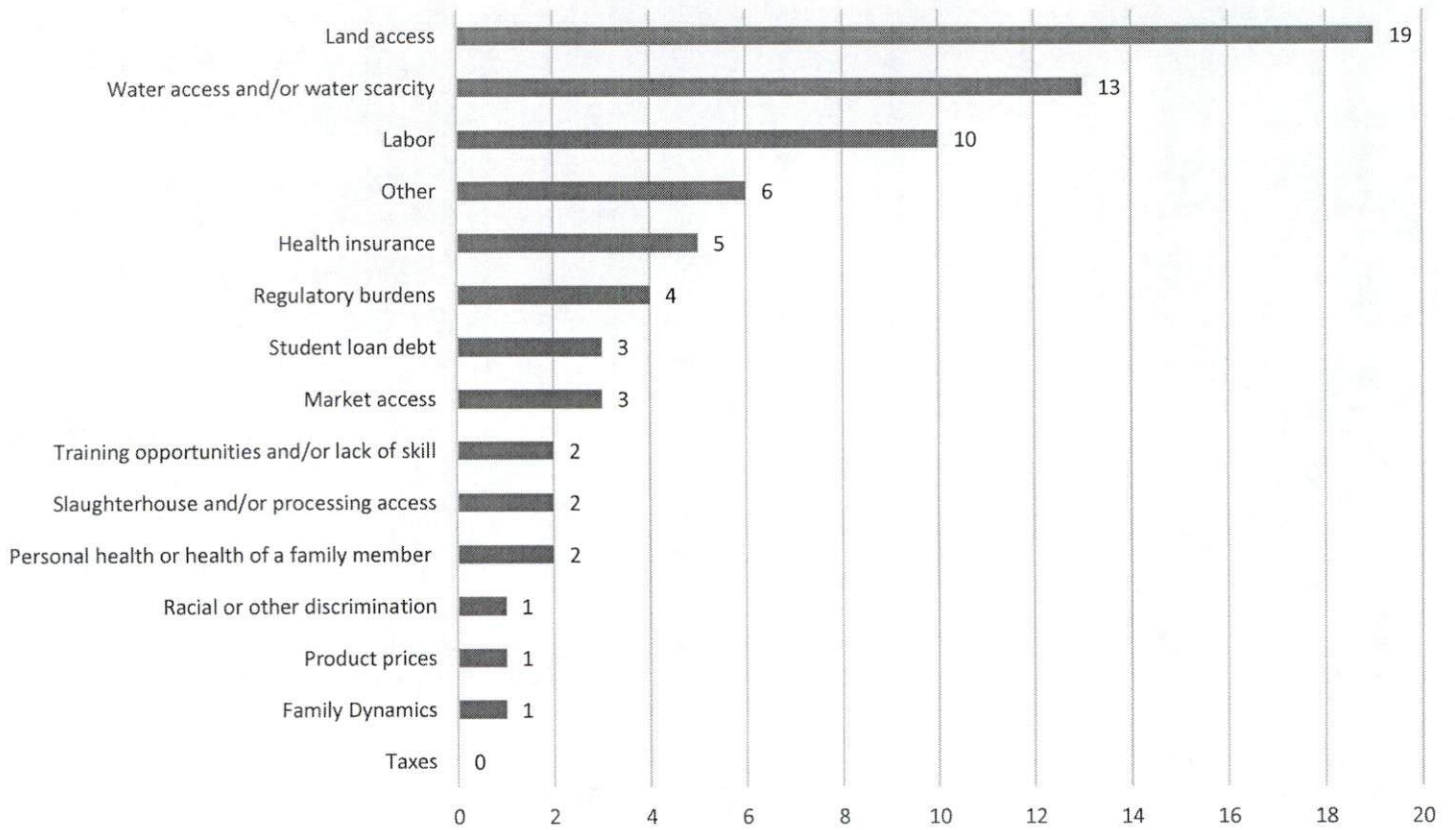
Do you participate in federal programs?
Farm Owners Only

Yes	15	42%
No	19	53%
No Response	2	6%
Total	36	100%

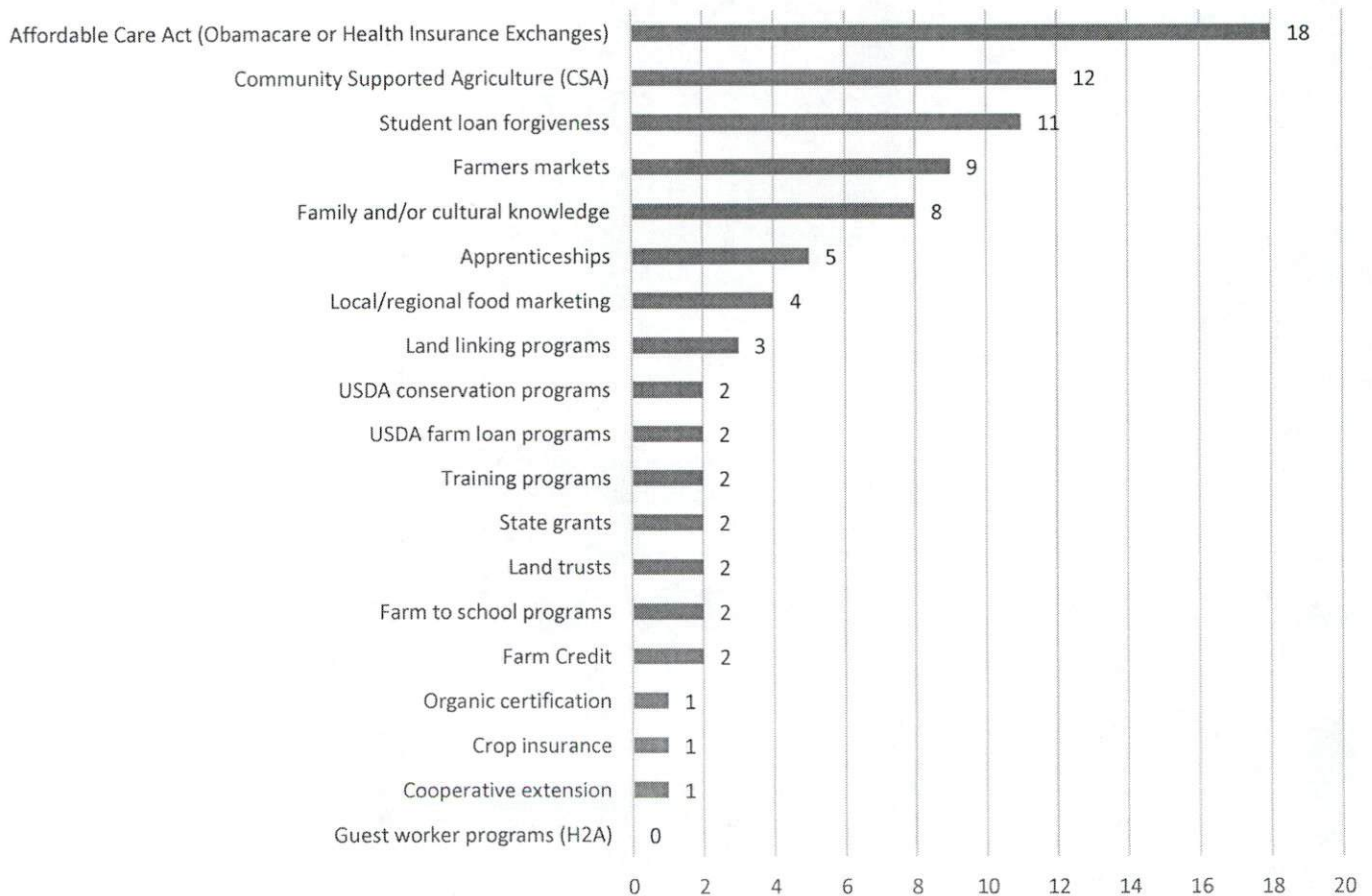
Challenges in Accessing Federal Programs



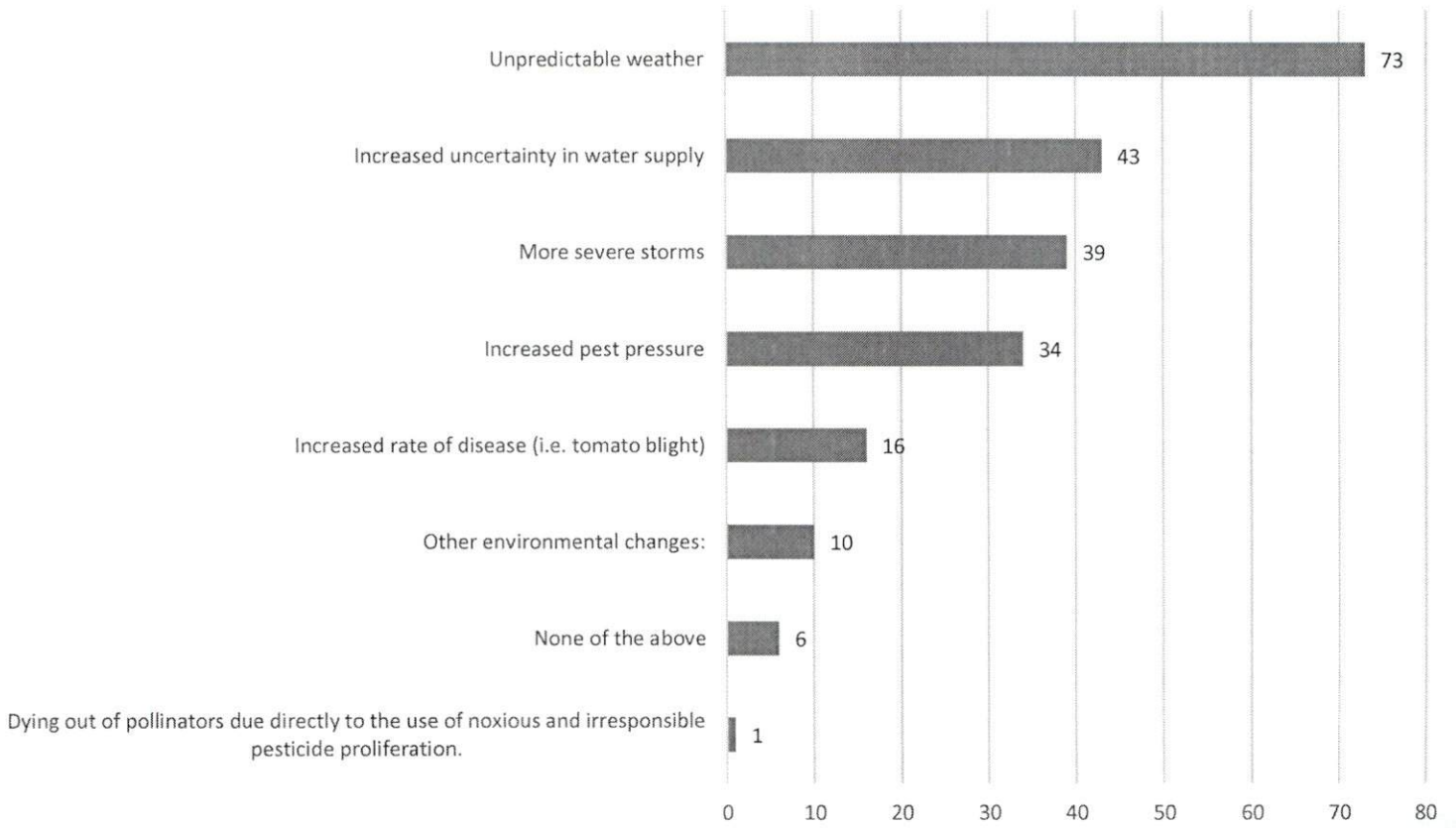
Most Significant Challenge to Farming



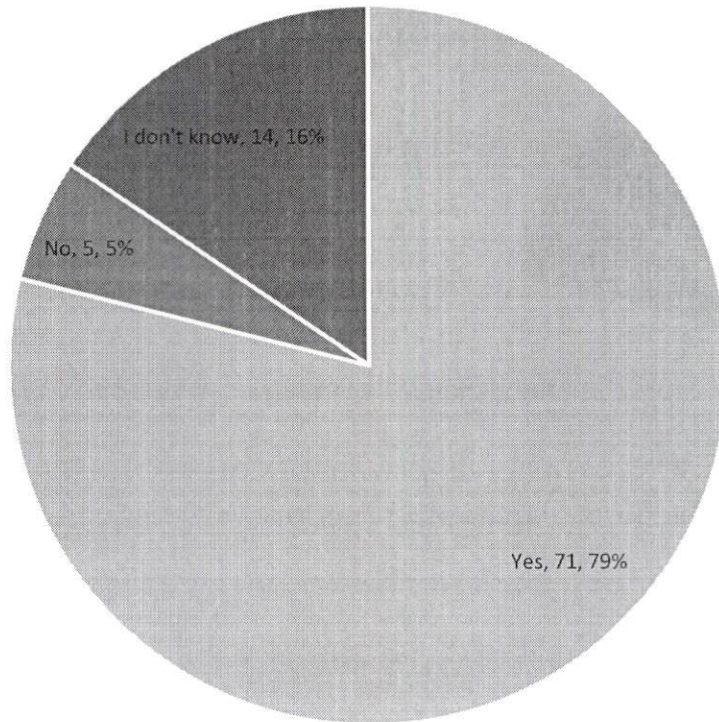
Most Helpful Policy, Program, or Institution



Are you experiencing any of the following on your farm?



Do you attribute any of the above effects to climate change?



Do you feel like you are making or will eventually make sufficient income in farming to meet your life goals?

