

CONNECT FOR HEALTH COLORADO

Joint Health Committee Meeting

February 2, 2017

History of Connect for Health Colorado

- In 2006, the Colorado General Assembly and Gov. Bill Owens established the Blue Ribbon Commission for Health Care Reform, known as the “208 Commission.”
- The Commission’s report to the General Assembly put forth recommendations from a diverse, bipartisan group of stakeholders, one recommendation was for a transparent source of information to help consumers compare and purchase health insurance and understand their costs, much like the marketplace we operate today.
- The conversation moved forward with Gov. Ritter’s Implementing Health Care Reform report in 2010, after the passage of the Affordable Care Act and extensive stakeholder processes engaging Coloradans on what they wanted in health reform for Colorado

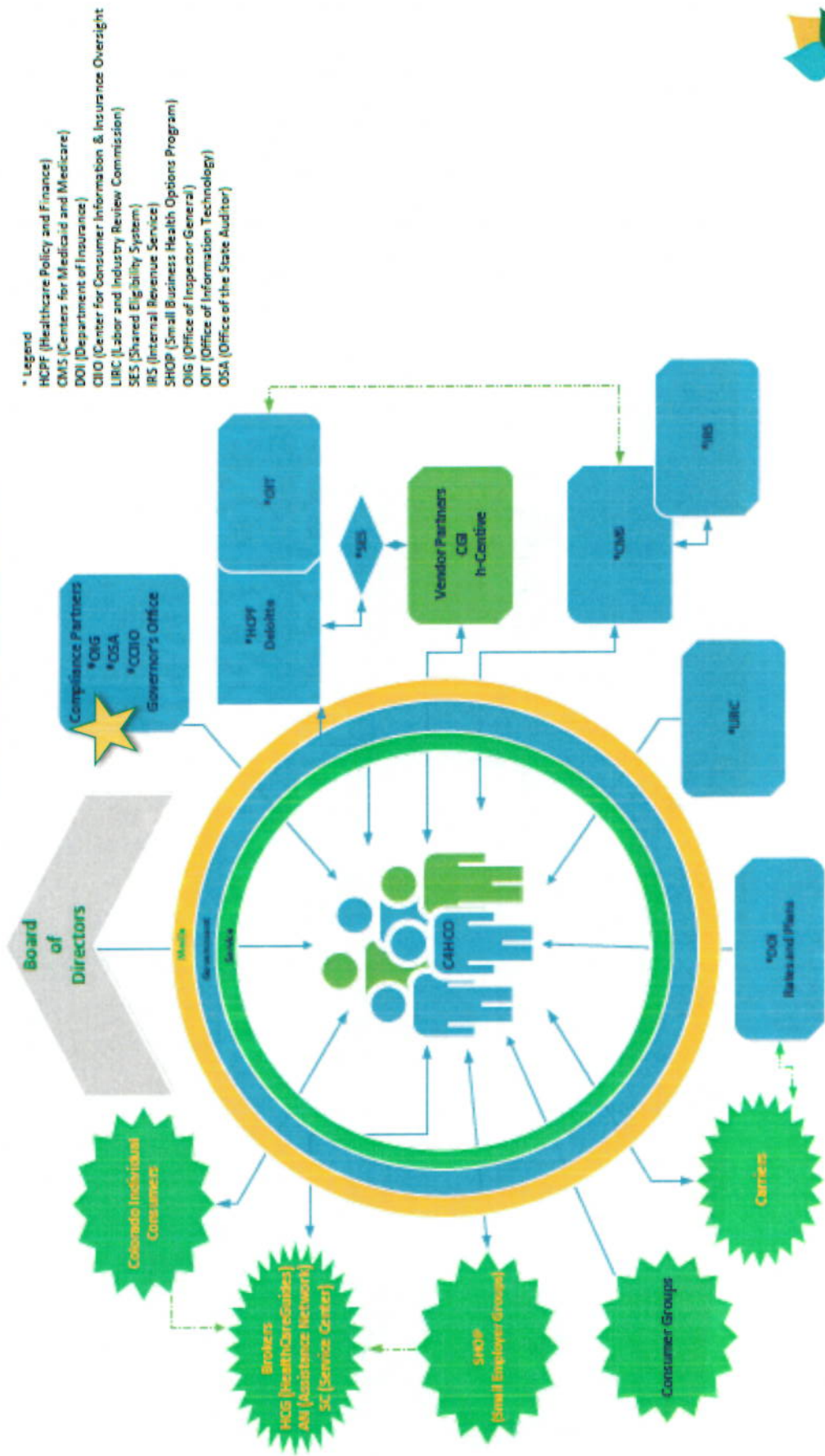
SB11-200

- In 2011, Governor Hickenlooper signed SB11-200 into law, which established:
 - A state health benefit exchange to fit the unique needs of Coloradans, seek Colorado-specific solutions and explore the maximum number of options available to the state.
 - A mission for the exchange “**to increase access, affordability and choice for individuals and small employers purchasing health insurance in Colorado.**”
 - A board of directors to act as the governing body of the exchange. Members are appointed by the Governor and General Assembly leadership.
 - The Colorado Health Insurance Exchange Oversight Committee to guide implementation of the exchange and make recommendations to the General Assembly.

About Connect for Health Colorado

- Connect for Health Colorado is a non-profit organization that brings together nine private health and dental insurance carriers where consumers can compare plan offerings side by side.
- In addition to the shopping website, Connect for Health Colorado has a statewide customer support network of Customer Service Center Representatives, Health Coverage Guides and licensed brokers to help Coloradans find the best health plan for their needs.
- Connect for Health Colorado is the only place where Coloradans can apply for advance premium tax credits and cost-sharing reductions to help pay for commercial insurance coverage.
- Per SB11-200, Connect for Health is not an active purchaser and does not have authority over plan rates or benefit designs.

Stakeholder Environment of Connect for Health Colorado



2017 INSURANCE EXCHANGE WEBSITE SCORECARD

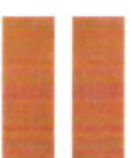


Connect for Health Colorado® Receives #2 National Ranking for New Consumer Shopping Tool

Our Partnership

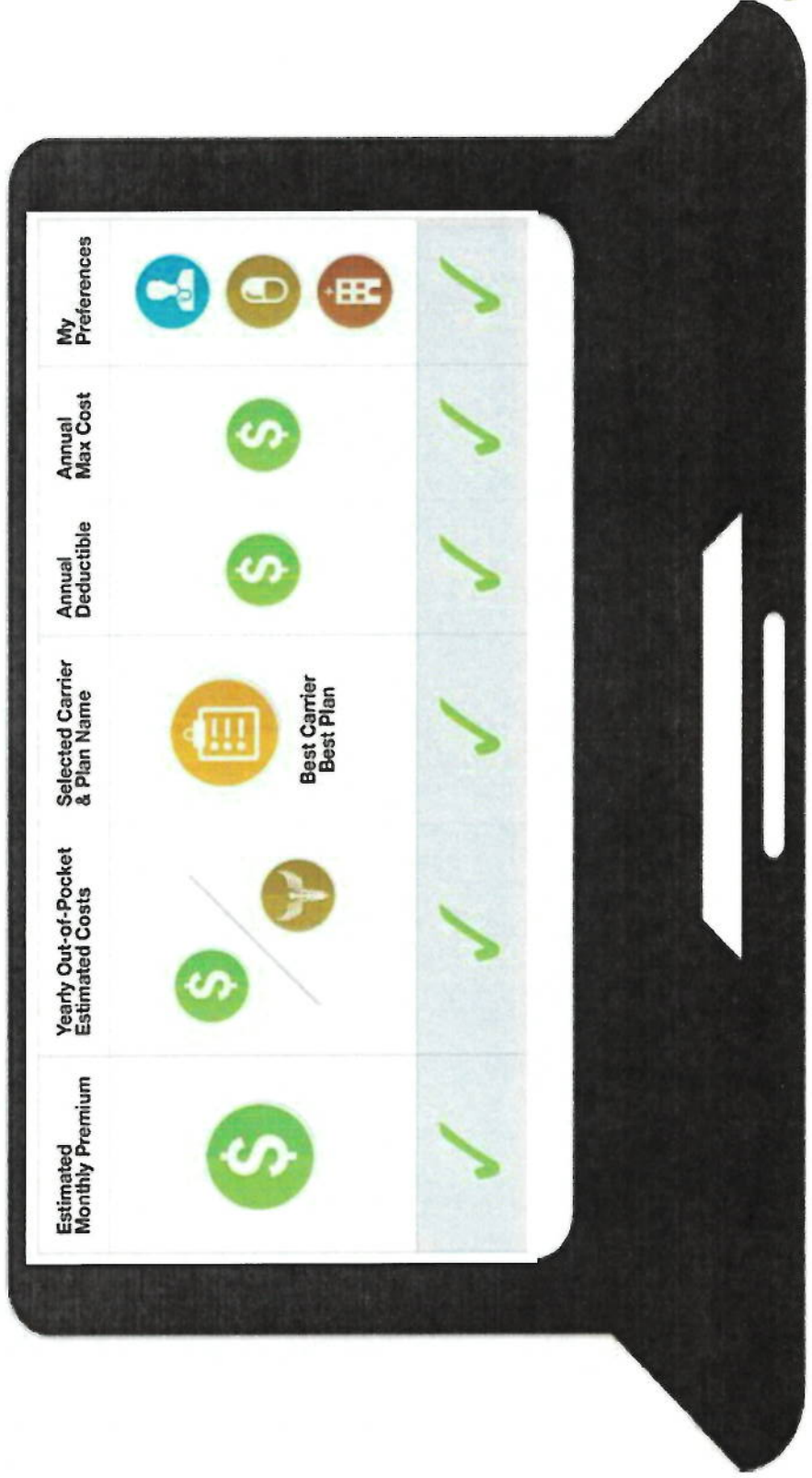


CENTER FOR IMPROVING
VALUE IN HEALTH CARE



- Colorado born non-partisan, non-profits to support Coloradans
- Develop tools to **empower Coloradans** with **transparent data** to help **inform their healthcare** decisions

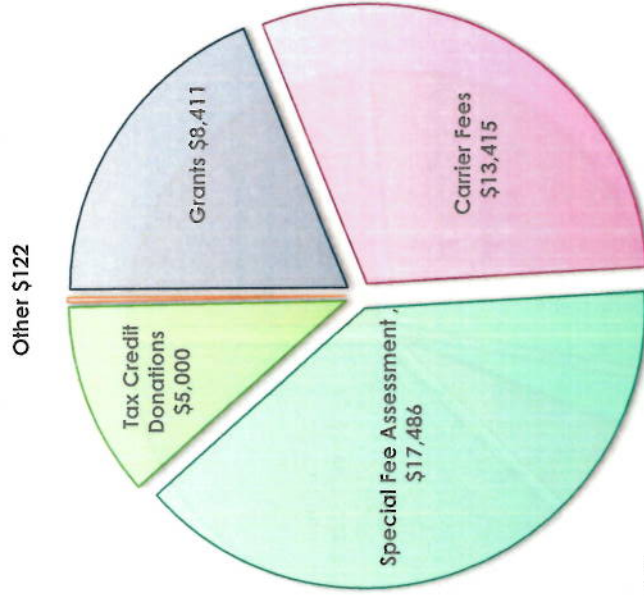
Consumer Tools



FINANCIAL DETAILS

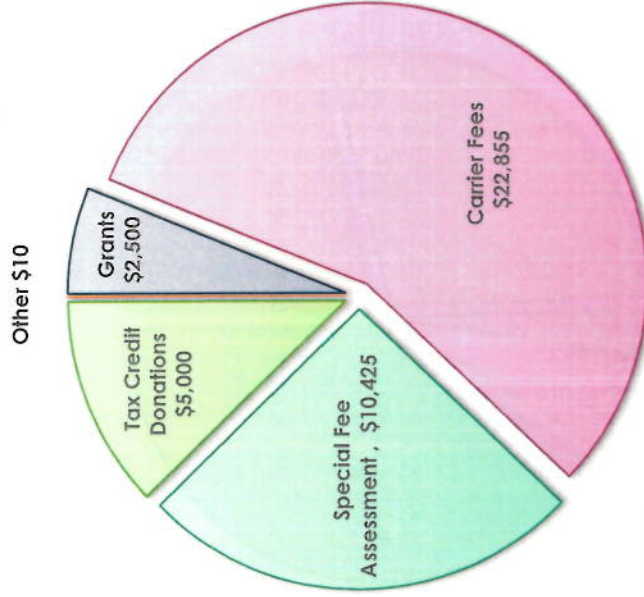
Revenue Comparison – FY 2016 vs FY 2017

Fiscal Year 2016 Projected Revenue



Total - \$44,433

Fiscal Year 2017 Projected Revenue



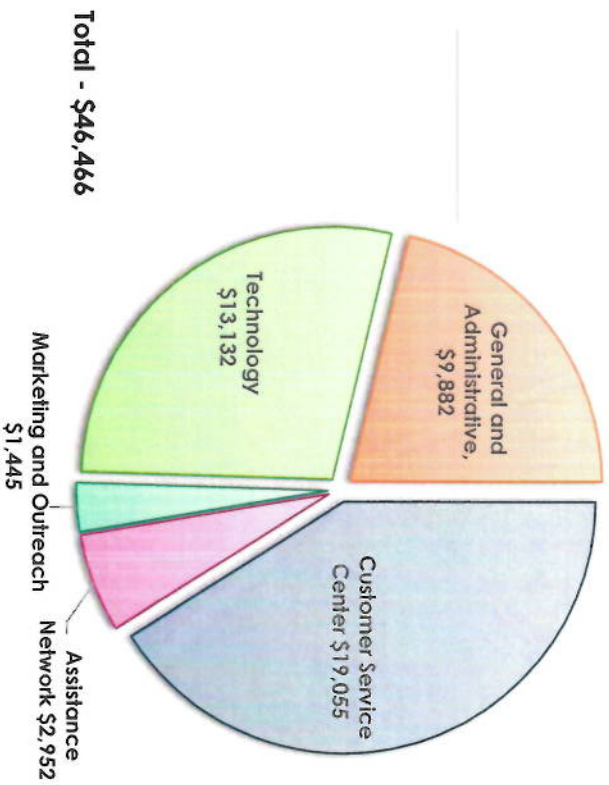
Total - \$40,790

Note: Funding from federal grants and the special fee assessment ended in 2016. The loss in these revenue sources was buffered by the healthy increase in enrollments and its positive impact on health insurance company fee revenue.

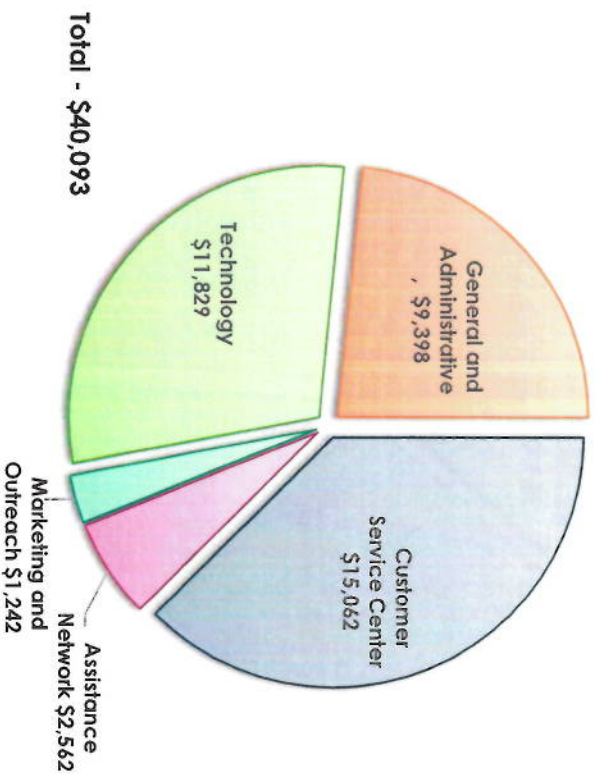
\$'s in 000's

Operating Expense Comparison – FY 2016 vs FY 2017

Fiscal Year 2016 Operating Expenses

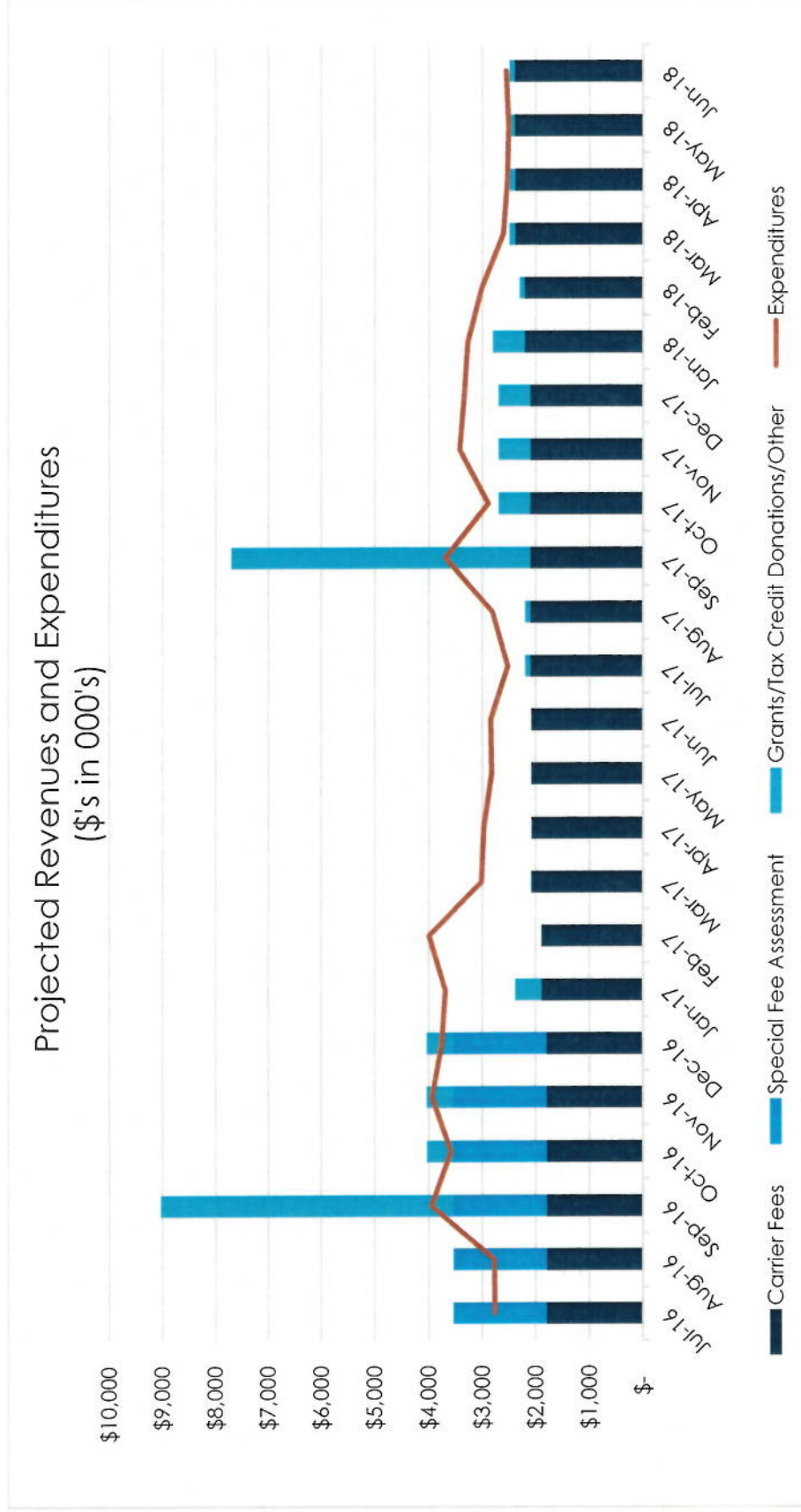


Fiscal Year 2017 Operating Expenses



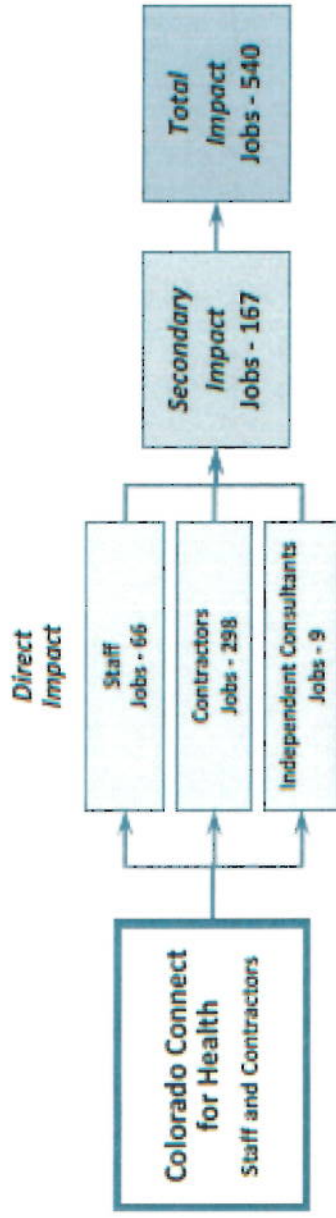
\$'s in 000's

Projected Revenues and Expenditures – 24 Months



ECONOMIC IMPACT OF CONNECT FOR HEALTH COLORADO

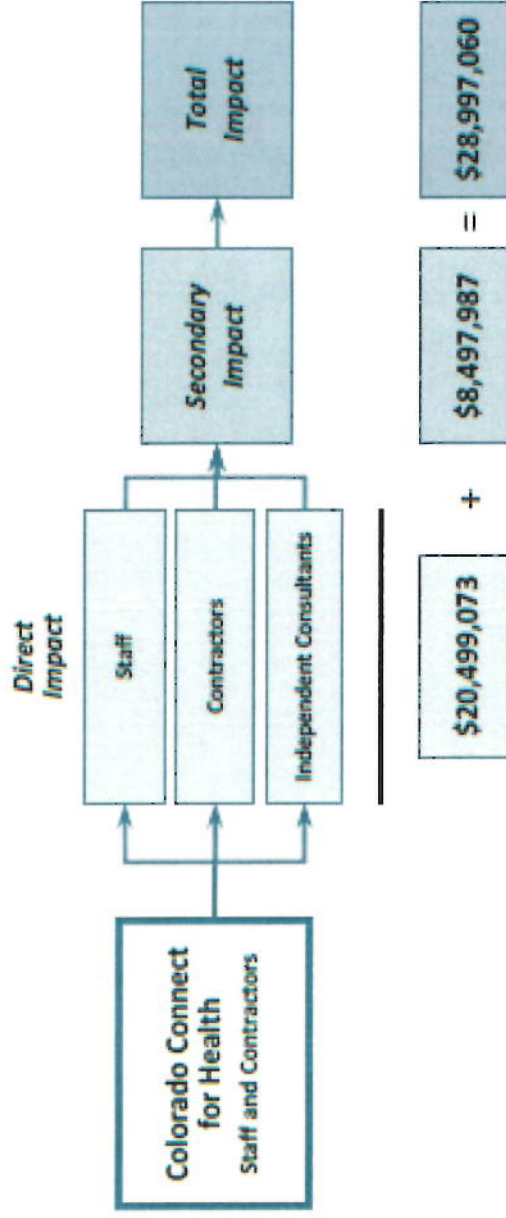
Figure 1.
Connect for Health Colorado, Current Total Annual Employment Impact, Statewide



Note: Secondary employment estimates for Connect for Health Colorado are from the IMPLAN model, adjusted to reflect employee compensation data from Connect for Health.

Source: BBC Research & Consulting, based on IMPLAN Regional Input-Output Modeling System.

Figure 2.
Connect for Health Colorado, Current Total Annual Payroll Income Impact, Statewide



Source: BBC Research & Consulting, based on IMPLAN Regional Input-Output Modeling System.

