



# Early Childhood Mental Health Consultation & Early Childhood Workforce

Taran Schneider, MA  
Executive Director



# Mission & Priorities

Build safe, supportive, and healthy early childhood settings and systems where children and professionals learn and grow.



Obesity  
Prevention



Social & Emotional  
Well-Being



Oral  
Health



Injury  
Prevention



HEALTHY *child*  
care COLORADO



# Core Functions

Serve as a hub for consultative roles

- Set professional standards
- Offer professional development
- Build communities of practice
- Provide technical assistance
- Promote high-quality consultative roles

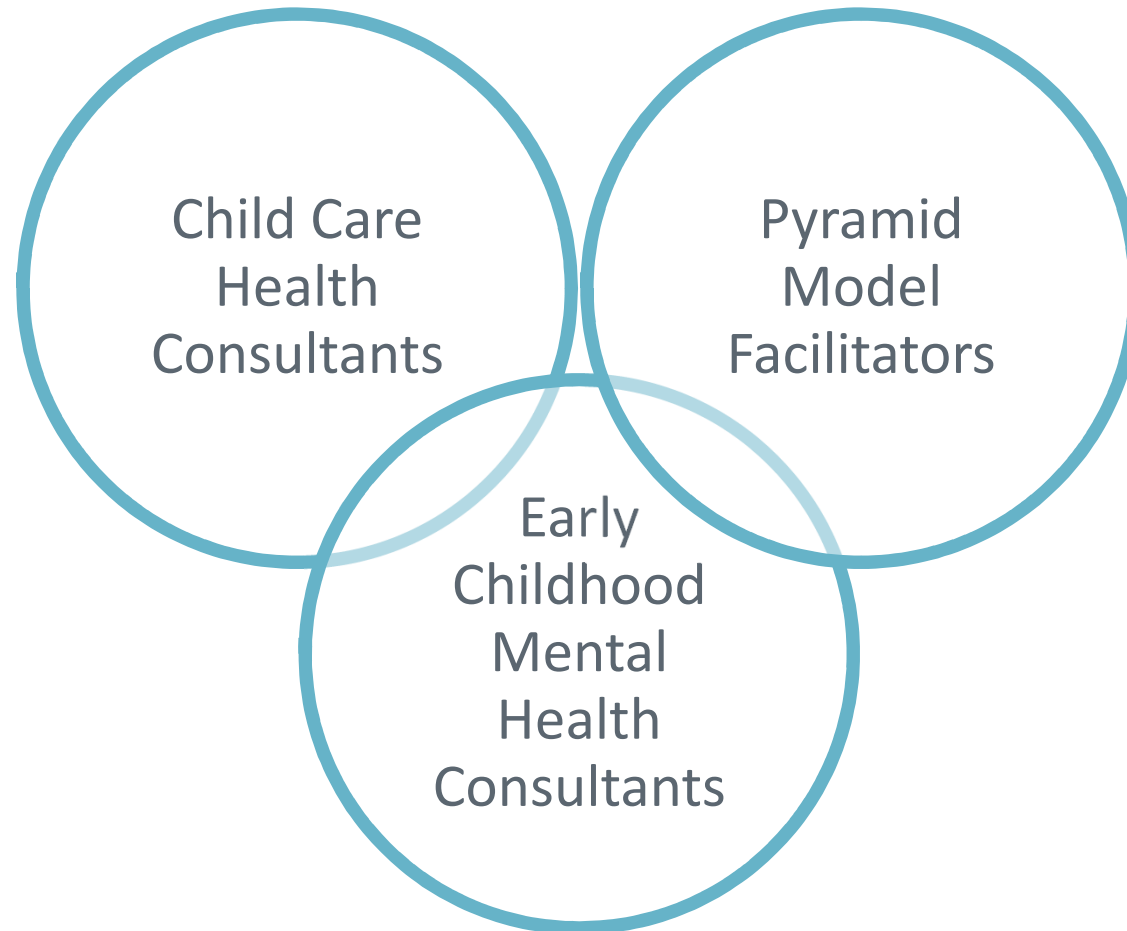
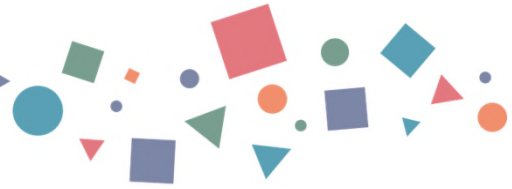
Support quality improvement efforts

- Offer professional development
- Administer Breastfeeding Friendly Child Care Recognition
- Provide technical assistance
- Make improvement and sustainability grants
- Conduct observation and assessment

Advocate for best practices & sound policies

- Be a strong voice for health and safety in early childhood
- Engage and contribute expertise in coalitions and committees
- Promote inclusion and systems alignment







*“The content of our consultation has shifted. Prior to COVID, centers’ main concerns focused on challenging behaviors. We have seen that directors and teachers are worried about the mental health of teachers and staff. Teachers and directors report being more overwhelmed, and we often address stress management for teachers and directors due to COVID circumstances.”*

*- CARES funded ECMH Consultant*



*“I think we've noticed children, parents, and teachers living in chronic crisis mode.”*

*“Children are struggling with transitions and self-regulation, teachers are maxed to their limit.”*

*- ECMH Consultants*

HEALTHY *child*  
*care* COLORADO

HEALTHY *child*  
*care* COLORADO

# Thank You!

Taran Schneider

[taran@healthychildcareco.org](mailto:taran@healthychildcareco.org)