

Functional Dry Needling of the Pelvic Floor

Description

Functional Dry Needling of the Pelvic Floor is a lab intensive on-site course designed to instruct participants in the application of dry needling to female and male pelvic floor musculature and associated neuroanatomical structures including the thoracolumbar spine, abdomen, pelvis and hip joint complex. This course will provide a comprehensive review of anatomy, practice hands-on examination techniques and discuss clinical reasoning related to disorders of the pelvic floor.

This course is a revolutionary approach to treating patients with pelvic floor dysfunction commonly associated with pelvic pain, incontinence, voiding dysfunction and/or sexual pain or dysfunction. Dry needling will assist with the restoration of muscle function, improve proprioception, reduce and eliminate pain, and normalize tissue sensitivity to optimize patients' function and quality of life.

Course Format

This two-day course combines lecture, hands-on-demonstrations and laboratory practice of selected advanced dry needling techniques. Furthermore, associated manual examination and treatment techniques will be performed. Participants will benefit from a maximum 1:8 instructor/student ratio, and will undergo an on-site skills assessment prior to the conclusion of the course. In addition, an on-line post-test will be required in order to obtain course certificate of completion.

Please note: Internal pelvic floor assessment is not required and will not be a component of the course work.

2-Day Onsite Course CEUs: 16 hours onsite

Target Audience: Pelvic floor therapists and clinicians who have an interest in treating pelvic floor dysfunction

Prerequisites

- Successful completion of Functional Dry Needling Level I (http://www.kinetacore.com/educational-offerings/course/level-1/) = 27 hr
- Completion of an introductory course on pelvic floor dysfunction. Participants should be prepared to identify and palpate pelvic floor muscles and associated structures neighboring the external genitalia. Internal pelvic floor assessment is not required and will not be a component of the course work; however, one muscle of the urogenital triangle in the female, the bulbocavernosus muscle, requires internal vaginal palpation in order to safely dry needle this structure. If you are not experienced at

performing internal vaginal palpation you do not have to needle the bulbocavernosus muscle.

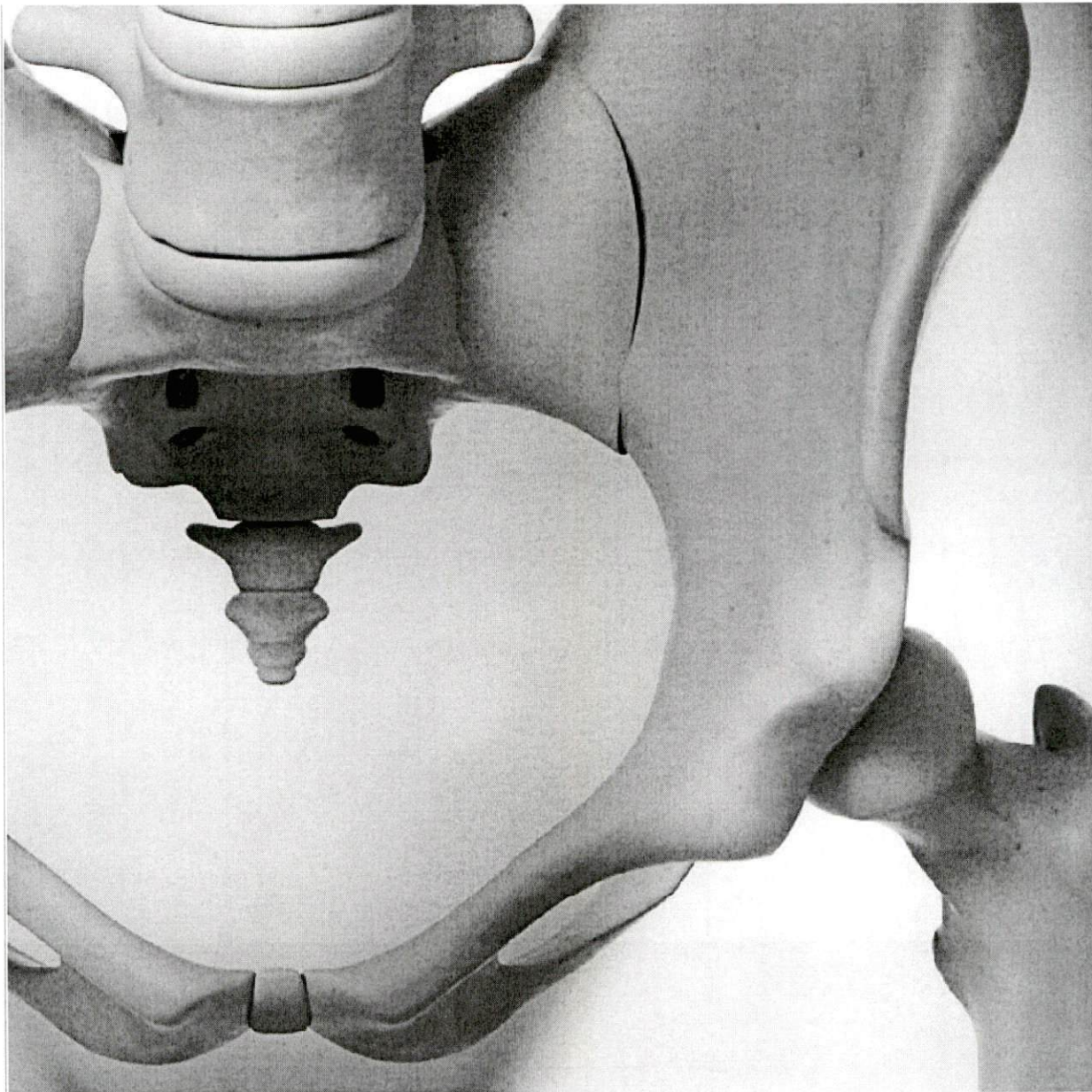
- Current license as a PT, MD, DO, DC, PA or NP (LAc only by request/referral.) (Not accepted: ATC, RMT, OT, PTA)
- Submit to KinetaCore a patient log of 200 dry needling sessions or complete Functional Therapeutics and submit a log of 100 dry needling sessions.

Objectives

1. Participants will demonstrate competency with anatomy, palpation and the application of dry needling to the muscles of the pelvic girdle, thoracolumbar spine, and abdomen.
2. Participants will understand the rationale for selecting dry needling to achieve optimal patient outcomes using clinical reasoning and evidence-based practice.
3. Participants will gain a strong appreciation of neurology and dysfunction in the nervous system associated with the pelvic floor, including visceral and somatic dysfunction.
4. Participants will practice the application of electrical stimulation with dry needling to the pelvic floor and associated anatomical structures to improve identified neuromuscular dysfunction.

Important Notices

- It is vital to your patient care that you have experienced this treatment in an educational setting. Please come prepared to practice the dry needling and also to have it practiced on you.
- Click here (<http://www.kinetacore.com/cancellation-policy/>) to view the KinetaCore Cancellation Policy.
- Please review your licensing state's scope of practice (<http://www.kinetacore.com/scope-of-practice>) to determine its status on Dry Needling.



\$1,000 USD

Upcoming Courses (2)

April 21-22, 2018

Functional Dry Needling Of The Pelvic Floor

(<https://my.kinetacore.com/RegistrationFormAccessCode.aspx?sType=1&sessfrmt=True&sessid=5533>)

📍 BRIGHTON, CO

September 8-9, 2018

Functional Dry Needling Of The Pelvic Floor

(<https://my.kinetacore.com/RegistrationFormAccessCode.aspx?sType=1&sessfrmt=True&sessid=6576>)



📍 ASHBURN, VA



ABOUT US ([HTTPS://WWW.KINETACORE.COM/ABOUT/](https://www.kinetaCore.com/about/))

History (<https://www.kinetaCore.com/about/history/>)
News (<https://www.kinetaCore.com/about/news/>)
Events (<https://www.kinetaCore.com/about/events/>)
Faculty (<https://www.kinetaCore.com/about/faculty/>)
Staff (<https://www.kinetaCore.com/about/staff/>)
Scope of Practice (<https://www.kinetaCore.com/about/scope-of-practice/>)
Products (<https://www.kinetaCore.com/products/>)
Frequently Asked Questions (<https://www.kinetaCore.com/faq/>)

EDUCATIONAL OFFERINGS ([HTTPS://WWW.KINETACORE.COM/EDUCATIONAL-OFFERINGS/](https://www.kinetaCore.com/educational-offerings/))

Certification (<http://www.kinetaCore.com/educational-offerings/course/functional-dry-needling-certification/>)
Functional Dry Needling Courses (http://kc.evidenceinmotion.com/educational-offerings/course_cat/functional-dry-needling/)
View All Upcoming Course Dates (<https://www.kinetaCore.com/upcoming-courses/>)
Frequently Asked Questions (<https://www.kinetaCore.com/faq/>)
Audits and Retakes (<http://www.kinetaCore.com/educational-offerings/#audits-and-retakes>)
Align Conference (<http://www.alignconference.com>)

MEMBERS ([HTTP://WWW.KINETACORE.COM/KCMEMBERSHIP](http://www.kinetaCore.com/kcmembership))

KinetaCore Membership (<http://www.kinetaCore.com/kcmembership>)
Access Membership Content (<http://www.kinetaCore.com/members-content/>)
Frequently Asked Questions (<https://www.kinetaCore.com/membership-faq/>)

FIND A THERAPIST ([HTTPS://WWW.KINETACORE.COM/FIND-A-THERAPIST/](https://www.kinetaCore.com/find-a-therapist/))

GET IN TOUCH ([HTTPS://WWW.KINETACORE.COM/GET-IN-TOUCH/](https://www.kinetaCore.com/get-in-touch/))

Contact Us (<https://www.kinetaCore.com/get-in-touch/>)

TEAMMATES:

EIM (<http://www.evidenceinmotion.com/>)
ISPI (<http://www.ispinstitute.com/>)
KinetaCore (<http://www.kinetaCore.com/>)
NeuroRTI (<http://www.neurorti.com/>)

KinetaCore

175 S. English Station Rd. Suite 218

Louisville, KY 40245

Directions > ([https://www.google.com/maps/place/175 S. English Station Rd. Suite 218 Louisville KY 40245](https://www.google.com/maps/place/175+S.+English+Station+Rd.+Suite+218+Louisville+KY+40245))

(p) 888.709.7096

(f) 720.247.9131

(e) education@kinetacore.com (<mailto:education@kinetacore.com>)

©2003 - 2018 KinetaCore. All rights reserved.