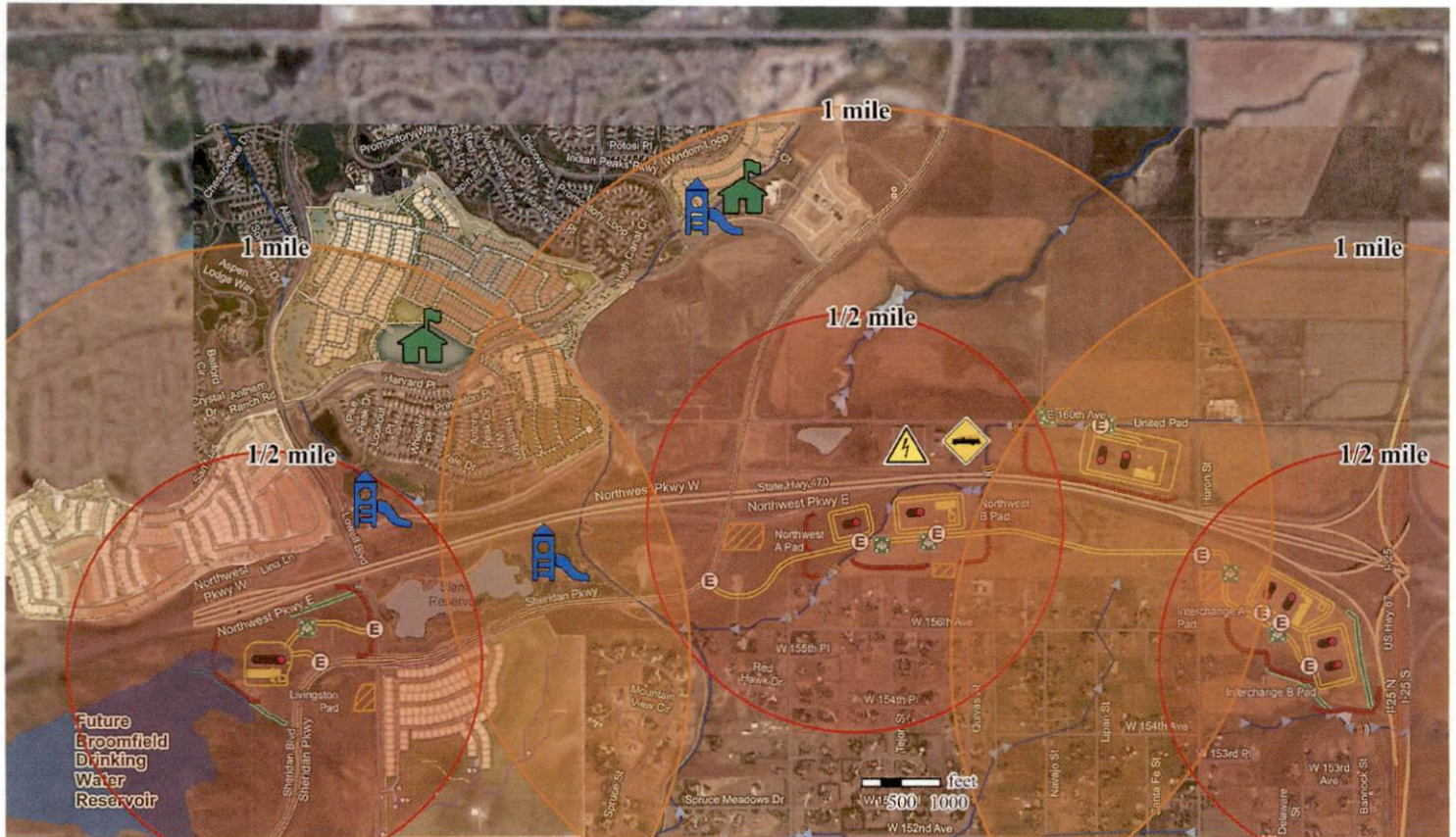


84 Well Development - Broomfield, CO



This 84 well development plan includes the 19 well Livingston site in close proximity to thousands of homes in Anthem Ranch, Anthem Highlands, Silverleaf, and Wildgrass which is next to the approved Broomfield potable water reservoir and near the Siena reservoir - also a potable water reservoir. The remaining 65 wells on 4 pads (NWPkwy A, NWPkwy B, United, and Interchange A/B) are near residential communities and 3 of the sites are on Broomfield Open Space.

Continuous Air Quality Monitoring Program



Broomfield residents value protection of public health, safety, and welfare, and the environment. With drilling and well completions being done in close proximity to established residential communities, Broomfield has initiated a \$1.8 million tax payer funded air quality monitoring program which covers 19 continuous monitors for three years.

Interchange A&B Pad: 33 Wells Broomfield, CO



Broomfield's Norsdtrom and Davis Open Space



Livingston Pad: 19 Wells Broomfield, CO



The Livingston site is located in close proximity to multiple master planned communities and next to the approved Broomfield Reservoir. The edge of the pad being constructed, as shown, is uphill from the edge of the future reservoir.