

House Energy and Environment Committee Public Hearing
SB19-181 Protect Public Welfare Oil & Gas Operations
Monday, March 18, 2019

Attachment F

Chairwoman Jackson and distinguished members of the Committee; my name is Ingrid Moore, from Longmont. I'm a concerned citizen speaking on my own behalf in support of Senate Bill 19-181, the *Protecting Public Welfare Oil and Gas*.

I'm sure you know that in 2012 residents of the City of Longmont voted by nearly 60% to implement a ban on fracking in and adjacent to the city. What they really wanted was the local control this bill provides.

Longmont has worked very hard to establish itself as a vibrant, diverse, and healthy community intent on attracting well-paying, creative primary jobs. We don't want to risk our health, water, views, and outdoor culture. We do not want or need jobs from heavy industry within or right outside of our borders. This should be our decision.

Since I moved to Longmont in 1995, I have developed adult-onset asthma. I had NO allergies or breathing problems before. I can't prove the cause, but ozone is a known factor. That is one of the reasons I'm here today. The graphic that I passed around to you shows how the ozone cloud blown over Longmont from Weld County aligns perfectly with oil and gas development on our eastern border. The adverse health effects of ozone are well-documented. It can be lethal, causing an estimated 1 million premature deaths per year worldwide.

Air quality measurements logged at the Boulder Reservoir in 2017 and 2018 place the Boulder area in the top five percent of the most polluted cities in the country.

The Industry **always** claims that **any** regulations will cost jobs and hurt the economy. Well, letting them regulate themselves hasn't worked. It's a false choice to claim that we either have health & safety, or a thriving economy. We can have both without oil and gas pollution.

If people can't live here, what's the point?

It is time to prioritize health and safety over extraction. Please support this legislation. Thank you for your time and attention.

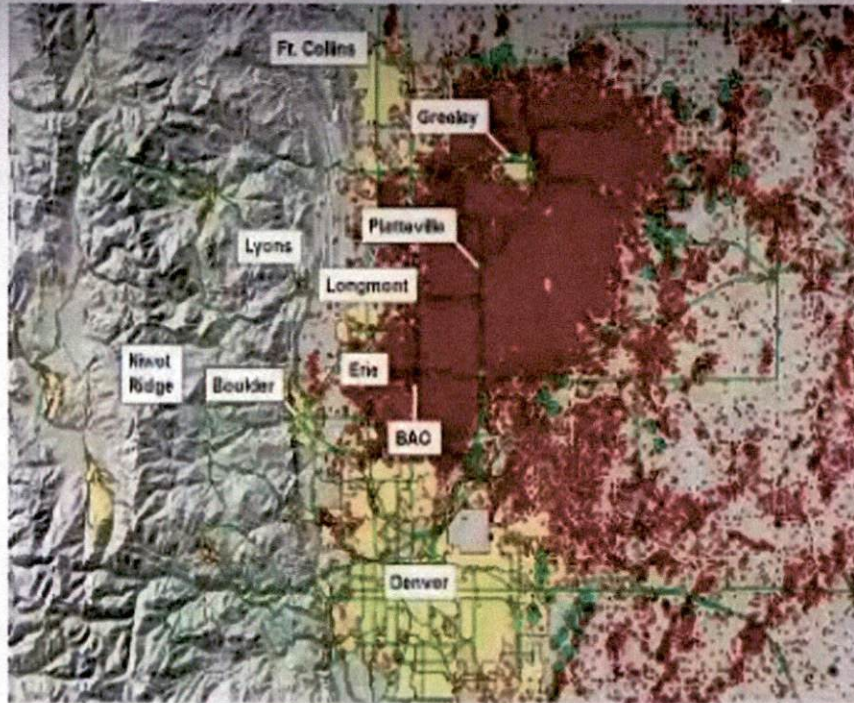
Ingrid Moore
925 Little Leaf Ct.
Longmont, CO 80503

Source: Detlev Helmig, "Local to Hemispheric Atmospheric Impacts of U.S. Oil and Natural Gas Development"

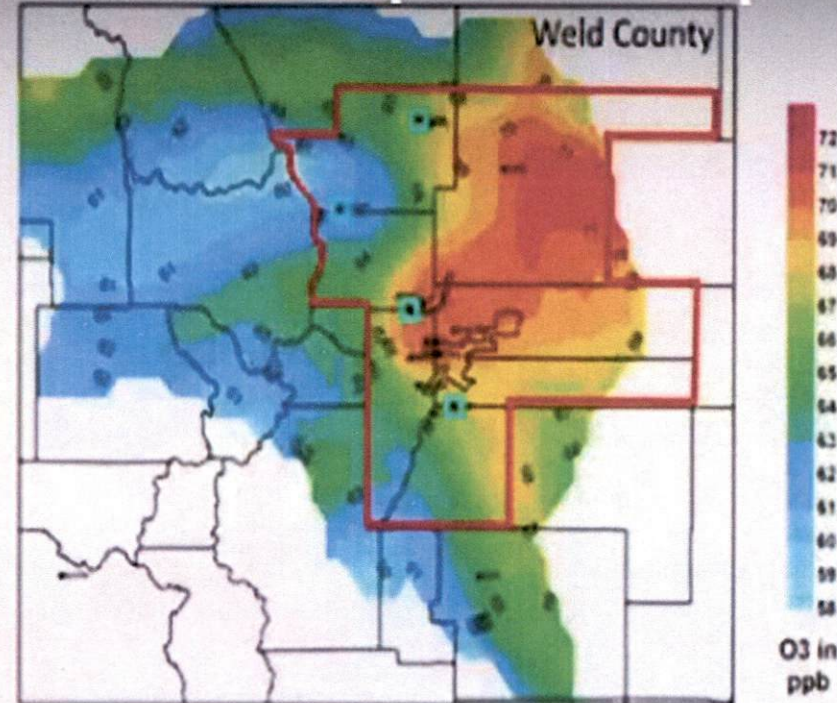
<https://www.youtube.com/watch?v=j3oTf-2K99A>

"What's striking is that the area that has the highest oil and gas development also has a common footprint with what was identified as an elevated source region for this ozone."

Helmig: Local to Hemispheric Atmospheric Impacts



The Colorado Northern Front Range with major urban cities Fort Collins, Boulder, and Denver. Active (red) and proposed (green) oil and gas wells are indicated (map provided by Colorado Oil and Gas Conservation Commission).



Colorado county map with ozone non-attainment area (red lines). Source region analysis of high ozone events utilizing ozone data from sites indicated by magenta square markers (top to bottom: Fort Collins, Rocky Mountain NP, Rocky Flats, and Chatfield), in conjunction with HYSPLIT transport modeling, suggests that Weld County and the DJB are a primary source of elevated NFR ozone [CDPHE, 2008a].

Air quality measurements logged at the Boulder Reservoir in 2017 and 2018 place the Boulder area in the top five percent of the most polluted cities in the country for certain contaminants. By Leora Frankel

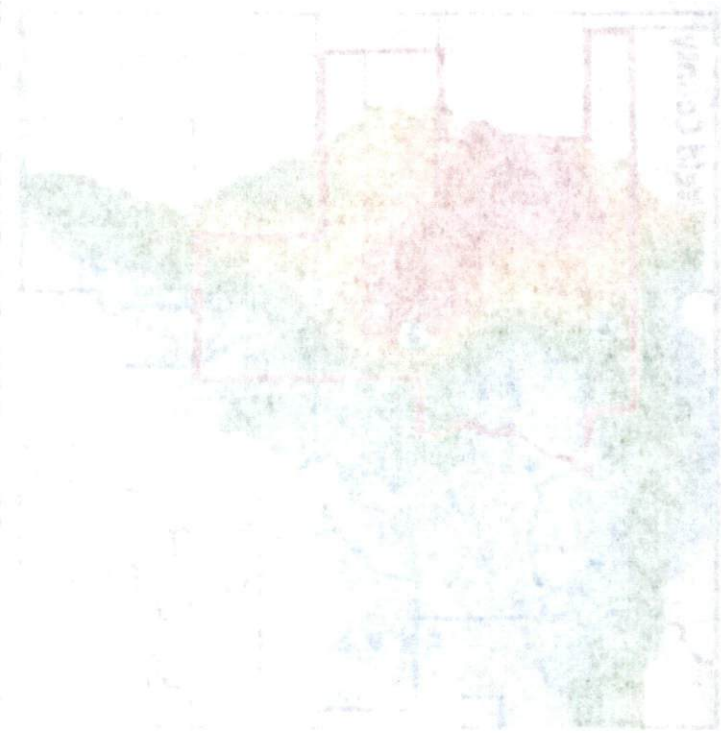
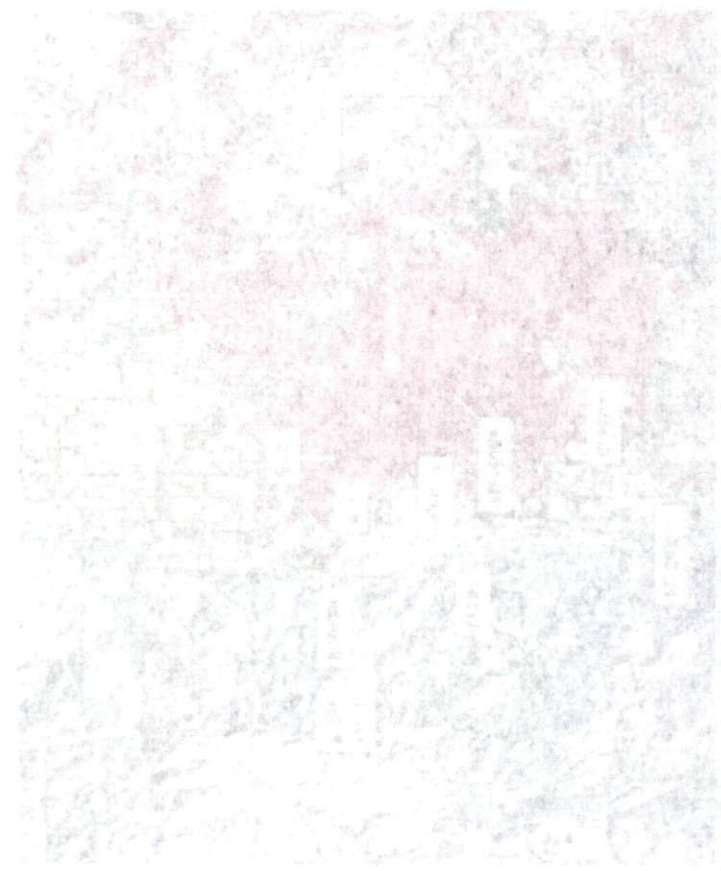
<http://boulderreporter.com/data-shows-fracking-wells-pollute-boulder-county-air/>

Geological Map of the [Area Name]

This map shows the geological structure of the [Area Name] based on field observations and geological data. The map is divided into several geological units, each represented by a different color and pattern.

The geological units shown on the map are:

- [Color/Pattern 1]: [Unit Name]
- [Color/Pattern 2]: [Unit Name]
- [Color/Pattern 3]: [Unit Name]
- [Color/Pattern 4]: [Unit Name]
- [Color/Pattern 5]: [Unit Name]



The map is a detailed geological representation of the [Area Name]. It shows the distribution of different geological units and their relationships. The units are color-coded and labeled according to the legend. The map also includes a scale bar and a north arrow for orientation.