



*Colorado•Wyoming Petroleum Marketers Association
Convenience Store Association*

EJMT – 2019 Legislative Consideration

***Grier Bailey, on behalf of the Colorado Petroleum Marketers Association
Board of Trustees***

April 12th, 2010

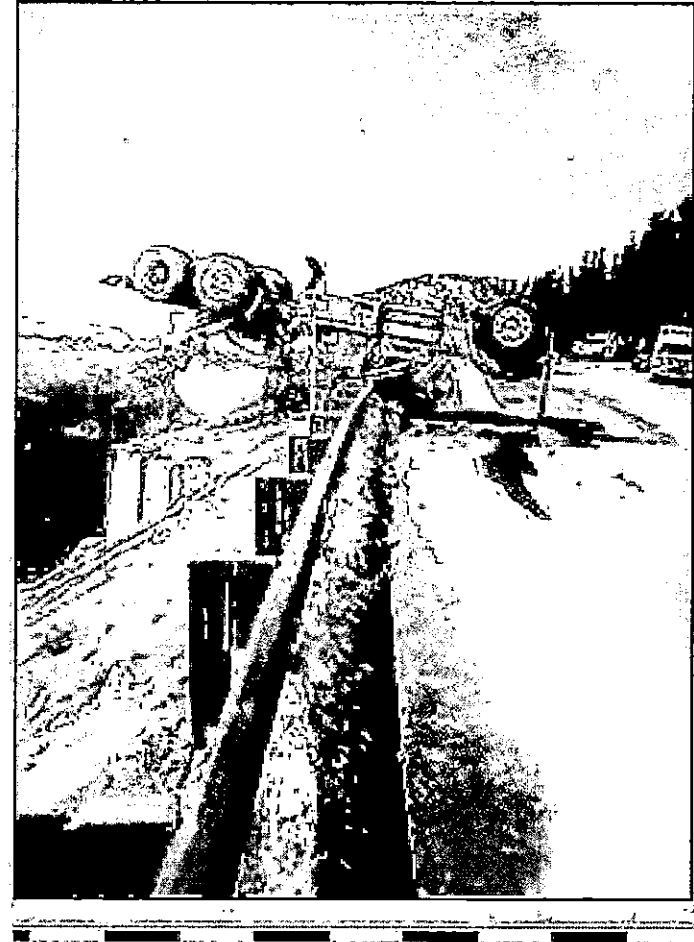
“Lake Dillon Fire Protection District Chief Dave Parmley said, that in worst-case scenario, a crash like last week’s could send a fireball of fuel down the steep embankment toward the A-Basin parking lot. That’s exactly what happened in the early 1980s, when a crash at the A-Basin turn set the North Fork on fire as burning gasoline flowed along the surface of the stream.”



A containment crew attempts to block contaminants from a wrecked tanker truck on Loveland Pass from reaching the North Fork, a relatively pristine Blue River tributary

April 15th 2010

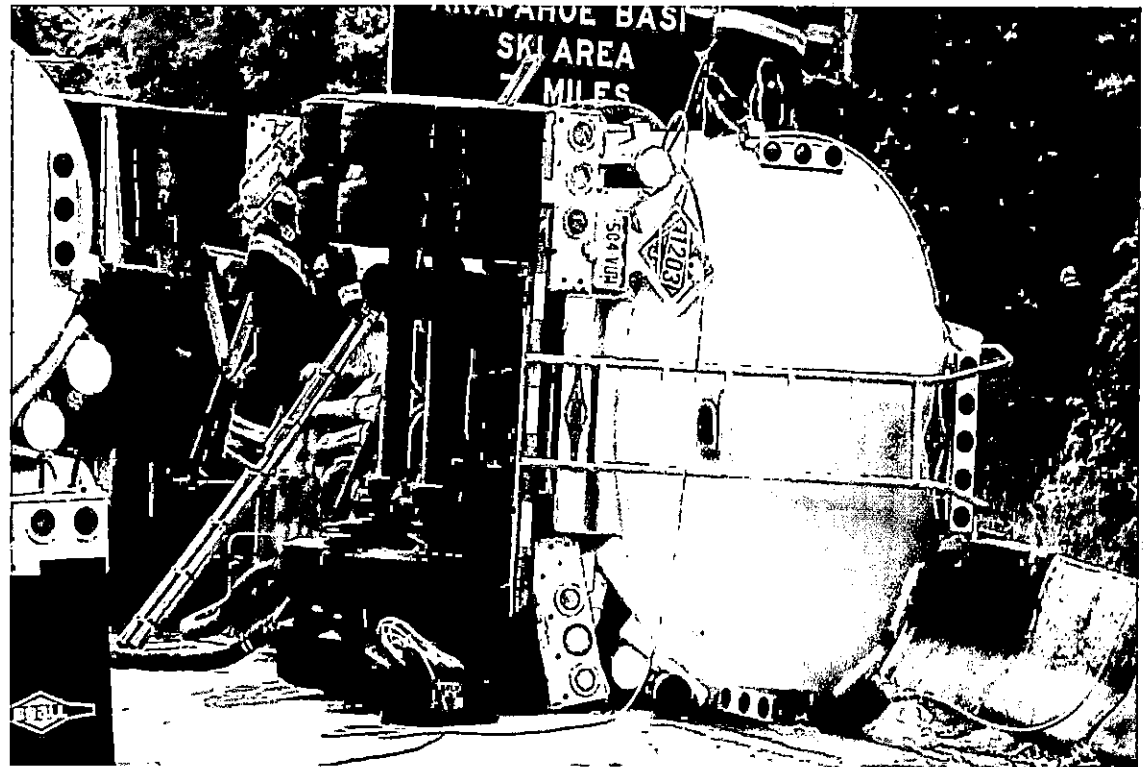
LOVELAND PASS –The transport vehicle was carrying 7,000 gallons of petroleum when it rolled over a westbound Highway 6 embankment above Arapahoe Basin Ski Area Friday, leaking about 500 gallons. The tanker was traveling from the Front Range to the Western Slope when the wreck happened around 10:30 a.m.



August 29th, 2011

DENVER (AP) – State wildlife officials say they found no fish killed in Clear Creek after a tanker truck crashed and spilled 4,000 gallons of diesel fuel into the waterway.

Jennifer Churchill of the Colorado Division of Wildlife said Monday an aquatic biologist checked the creek after the spill was reported Saturday on U.S. 6 near the Loveland Basin ski area. The truck driver suffered minor injuries.



August 5th, 2013

FRISCO, Colo.—Authorities are still trying to assess the damage after a tanker truck crashed on Loveland Pass, dumping at least 4,000 gallons of gasoline above Arapahoe Basin Ski Area.

Fire officials tell the Summit Daily the environmental damage could be severe.

The Solar Transportation vehicle was hauling diesel and unleaded fuel into Summit County when it tipped over and ruptured on Saturday. Officials say the pollution was 3 or 4 inches deep in places.



October 7th, 2017

SUMMIT COUNTY, Colo. (CBS4) – Officials with Colorado State Patrol are urging drivers to use caution when driving in the high country after a semi truck crash on Saturday.

The fuel tanker hit a guard rail on Highway 6 over Loveland Pass in a patch of what was described as wintry conditions in the morning. Conditions on other parts of the road were clear at the time.

