



2025-2027 COLORADO WILDFIRE MITIGATION PLAN

DATE

AGENDA

1. Introductions & Context
2. Ongoing Wildfire Mitigation Work
3. 2025-2027 Wildfire Mitigation Plan
4. Regulatory Process Next Steps
5. Community Engagement

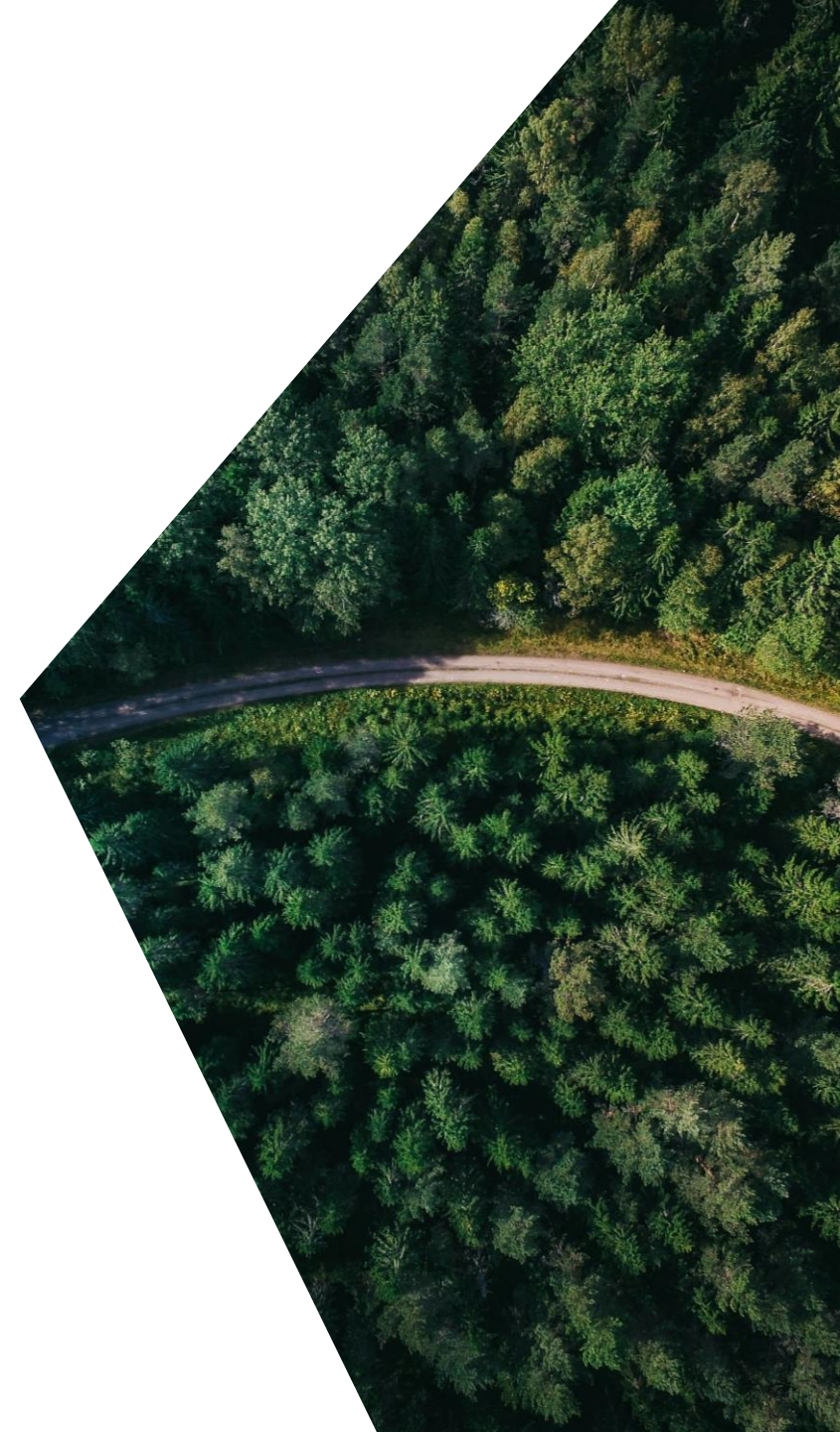
INTRODUCTIONS

Wildfire Mitigation: Context

Severe weather and drier conditions mean that **wildfires are an ongoing threat in regions across Colorado**, even in areas that haven't traditionally been wildfire prone.

Xcel Energy is committed to doing our part and will continue to make strategic investments to help protect our customers, communities and way of life.

As wildfire risks continue to evolve, so do the tools we are using to assess and mitigate risk. **Our go-forward plan builds on our work to date.**



ONGOING WILDFIRE MITIGATION WORK



Ongoing Wildfire Mitigation Work

Since 2020, we have invested over \$500 million in wildfire mitigation activities in Colorado. In 2023 alone, these measures included:



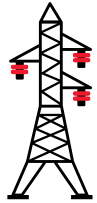
2,777

**DISTRIBUTION
POLES
REPLACED**



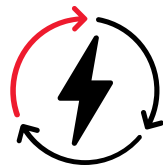
20,014

**DISTRIBUTION
POLES INSPECTED
USING UNMANNED AERIAL
SYSTEMS (DRONES)**



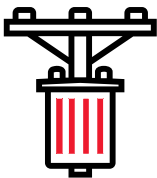
312

**PRIORITY
REPAIRS
ON TRANSMISSION
EQUIPMENT**



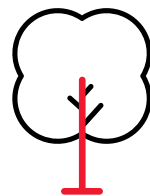
2,832

**MILES OF TRANSMISSION
LINE INSPECTED
USING VISUAL INSPECTIONS**



19


**SUBSTATION
PROTECTION
RELAYS INSTALLED**



180%

**COMPLETION RATE OF
PLANNED VEGETATION
MANAGEMENT
EXCEEDING 90% ANNUAL GOAL**

REDUCING WILDFIRE RISK IN OUR COMMUNITIES



ENTERPRISE COMMAND CENTER
Monitors wildfire conditions and supports event response

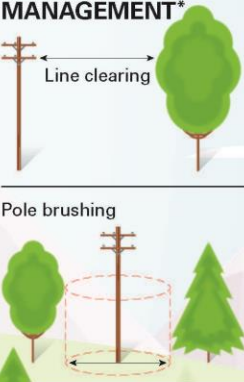
SITUATIONAL AWARENESS:
Risk modeling software evaluates current and forecasted weather conditions, wind speed, moisture and ground fuel conditions to predict potential wildfire spread

LiDAR
LiDAR equipped helicopter inspections create 3D maps of our equipment to perform wind strength analysis



ENHANCED POWERLINE SAFETY SETTINGS
We operate our system more conservatively when wildfire conditions are elevated— if an object strikes the line or a fault occurs, protective devices shut off the power until it can be safely restored

WILDFIRE DETECTION CAMERAS
AI-enhanced cameras speed the process of wildfire detection and response



VEGETATION MANAGEMENT*

Line clearing

Pole brushing

*In Wildfire Risk Zones on our previously approved maintenance schedule



UNDERGROUNDING
Burying power lines, where possible, helps reduce wildfire ignition risk

SAFETY AND PREPAREDNESS
We provide safety tips to help you prepare for potential wildfires and power outages



WEATHER DATA
Local weather conditions are used to inform Enhanced Powerline Safety Settings and when we can perform work safely



COMMUNITY OUTREACH
Connecting with local stakeholders to understand the unique needs of each community



DRONE INSPECTIONS
Inspecting the electric system to identify equipment needing repair



SYSTEM HARDENING
System rebuild projects to upgrade electric lines within wildfire zones to wildfire rated equipment

SUBSTATION



LEARN MORE AT
[XcelEnergyWildfireMitigation.com](https://www.xcelenergy.com/wildfiremitigation)

**2025-2027
WILDFIRE MITIGATION PLAN**



The next evolution of risk assessment and mitigation work

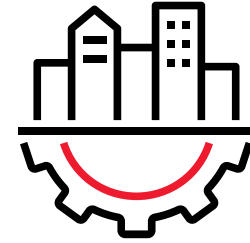
Our plan details **proposed investments and improvements** to existing wildfire safety measures



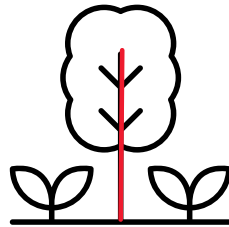
Situational Awareness



Technology-Enabled Infrastructure Inspections



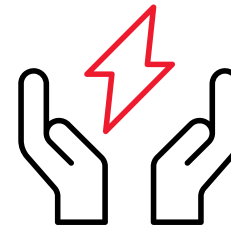
Infrastructure Improvements



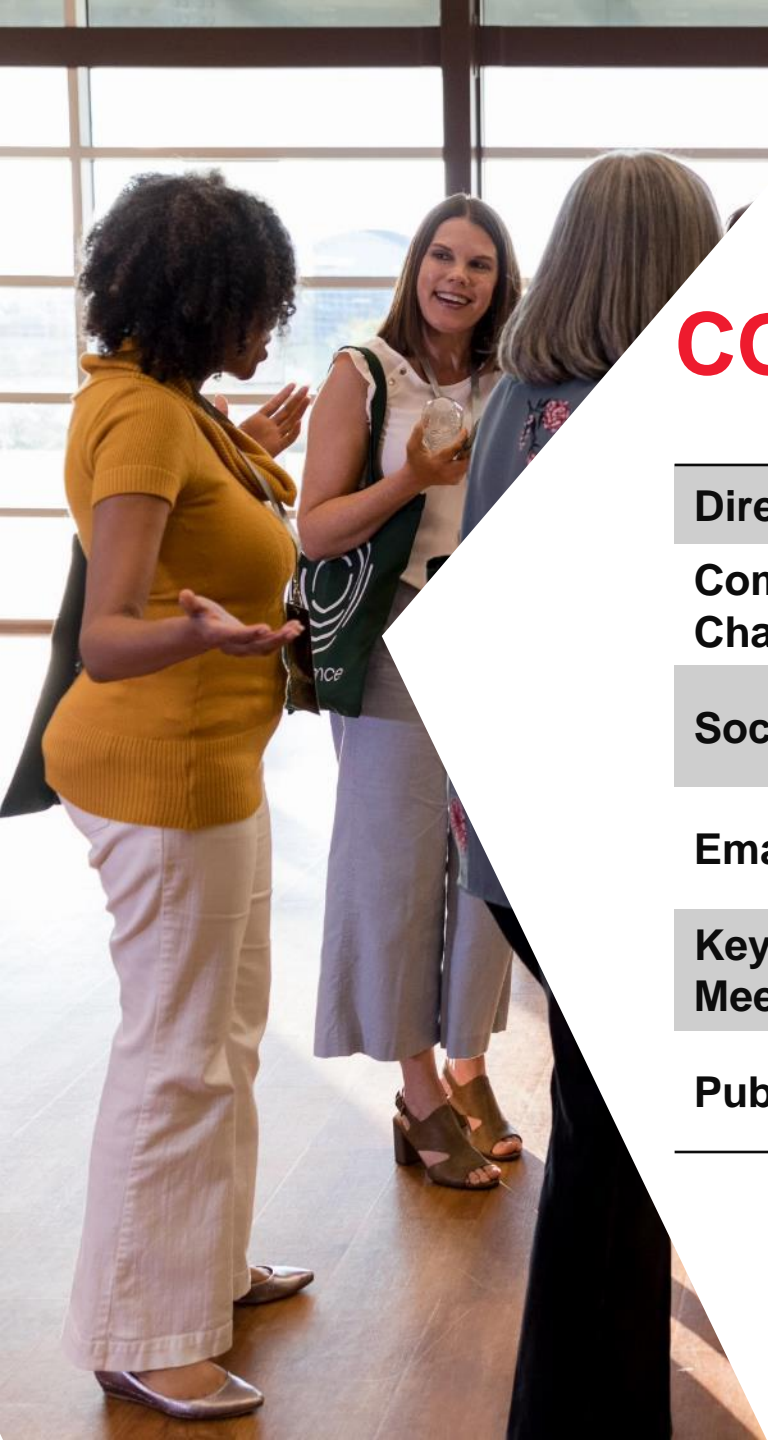
Vegetation Management



Enhanced Powerline Safety Settings Program



Public Safety Power Shutoff Program

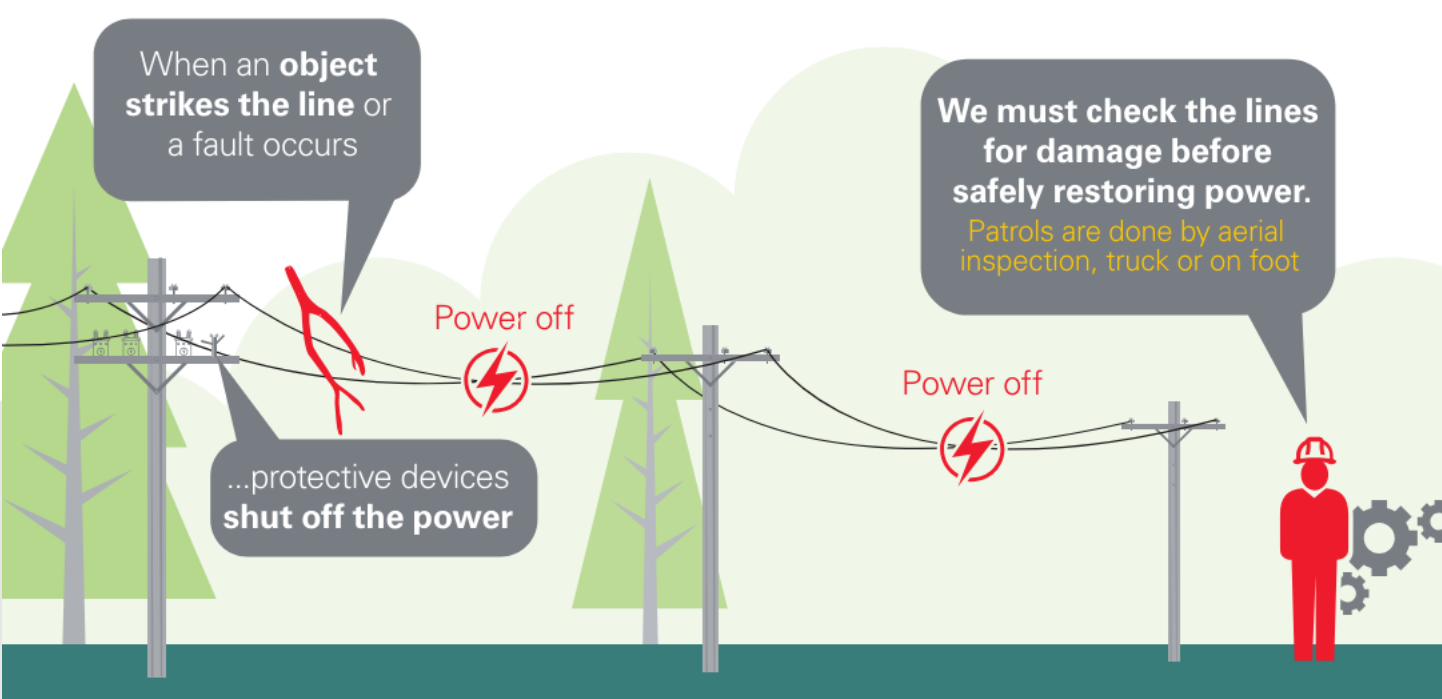


COMMUNITY ENGAGEMENT

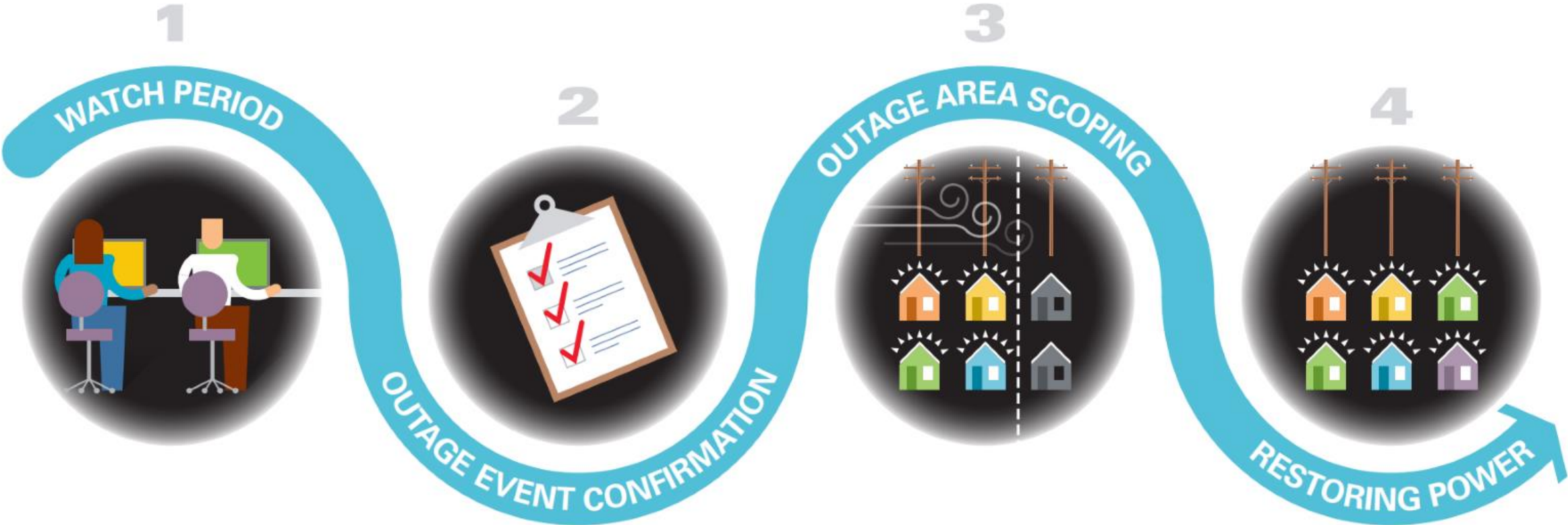
Direct Mail	Send important program updates and meeting invitations
Communication Channels	Website, email and hotline providing up-to-date information about the Wildfire Mitigation Program
Social Media	Provide Wildfire Mitigation Program news and updates, safety tips and preparedness reminders
Email	Direct email outreach to community leaders and other key stakeholders
Key Stakeholder Meetings	Small group meetings with key stakeholder groups, including emergency and first responders
Public Open Houses	Large community meetings for the general public to learn more and ask questions

Spotlight: Enhanced Powerline Safety Settings

Enhanced Powerline Safety Settings are **an important and proven way to reduce risk**

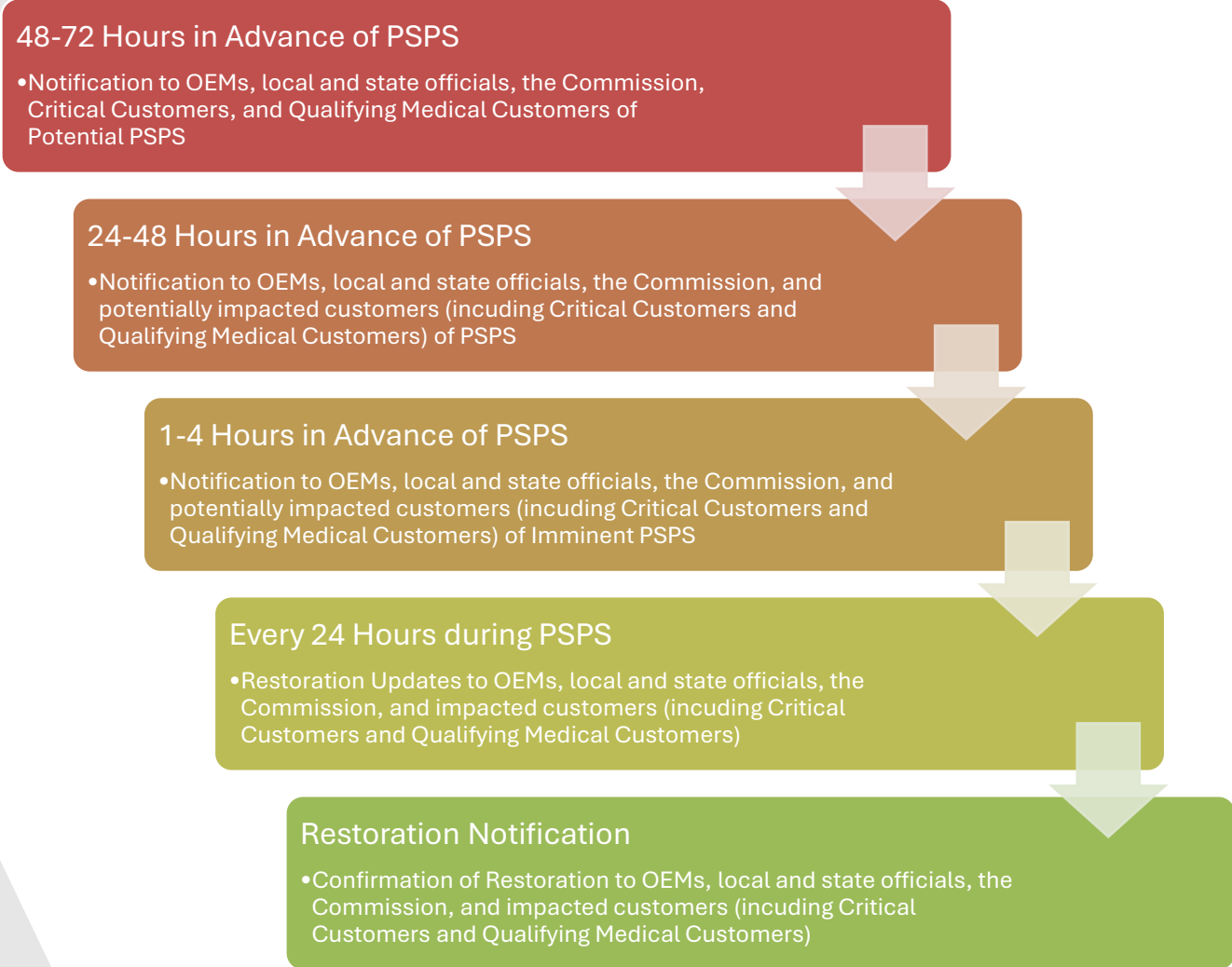


Spotlight: Stags in PSPS Decision-Making



Future PSPS Communication

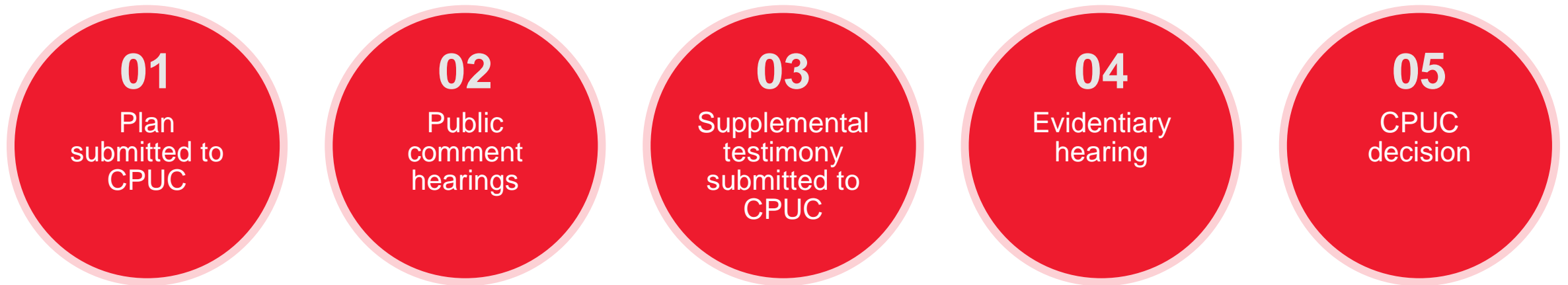
The Company is **working toward** earlier and more frequent PSPS communications



REGULATORY PROCESS – NEXT STEPS

NEXT STEPS

The 2025-2027 Wildfire Mitigation Plan is subject to regulatory review and approval.



The regulatory process will allow for public participation and in-depth evaluation and analysis by state regulators and other parties to ensure the investments are prudent, necessary and in our customers' best interest.

We expect the regulatory process to take several months or longer. We will share updates with stakeholders as we have more information.

