

Northwest Parkway Public Highway Authority

Transportation Legislation Review Committee



September 25, 2024

Who Forms NWPPHA

- Members:



City & County of Broomfield



City of Lafayette

- Ex Officio & Associate Members:



City of Arvada



Regional Transportation District



Interlocken Metro District



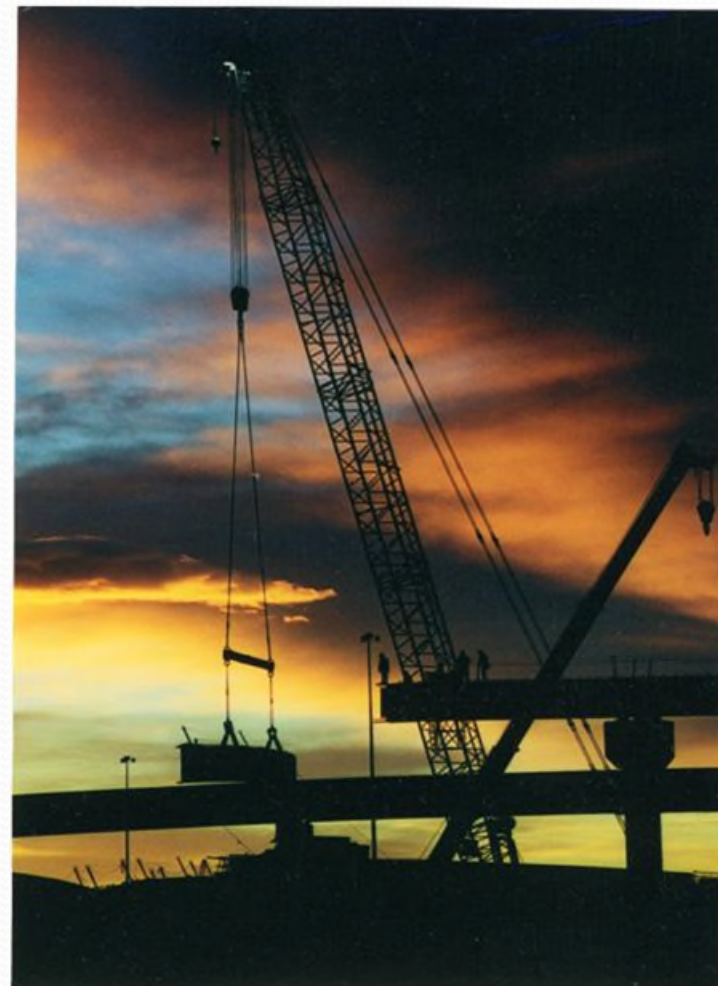
Jefferson County



Colorado Dept. of Transportation

Background

- **July 1999:** Authority established
- **The Purpose:** To build an authority financed highway linking E-470/I-25 to US36.
- **The Financing:** User fee revenue bonds were used to fund the NWP – **No Tax dollars!**
- **The Reasons:**
 - ✓ To continue the extension of a Denver metropolitan beltway
 - ✓ To avoid the tax cost of building a major new regional roadway link
 - ✓ To ensure that development occurred in specified locations respecting planned open space
 - ✓ To relieve traffic on neighboring streets



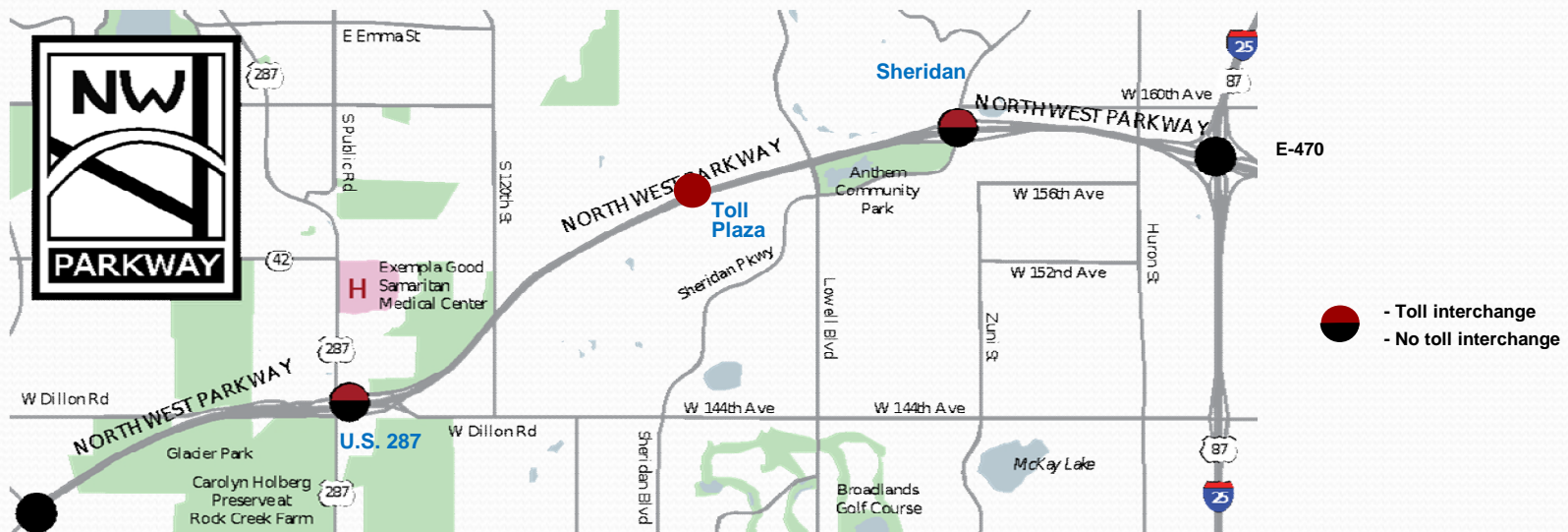
Facility Overview

DESCRIPTION

NWP is an 8.5-mile, 75 mph four-lane limited access highway, connecting E-470 at I-25 in the north metro Denver area, with U.S. 36, in Broomfield. It is the northwest section of Denver's partial beltway. Comprising of:

- ✓ 23 bridge structures;
- ✓ 3 interchanges (I-25/E-470, Sheridan, U.S.287);
- ✓ 1 maintenance yard and 1 administrative building;
- ✓ 7 solar sites (62 kW);
- ✓ 3 toll points (All Electronic Tolling – no stopping)

ROAD MAP



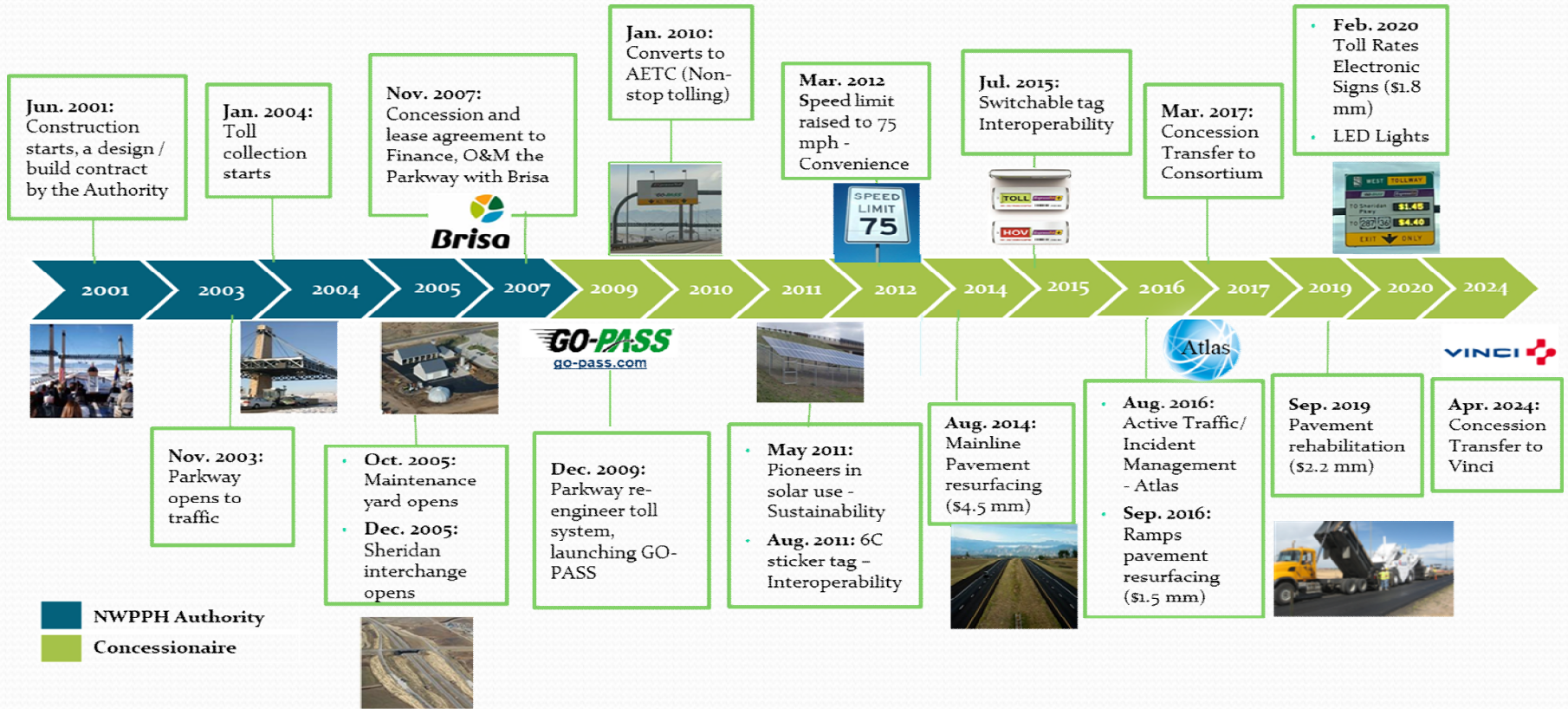
Northwest Parkway Concession



Fundamentals

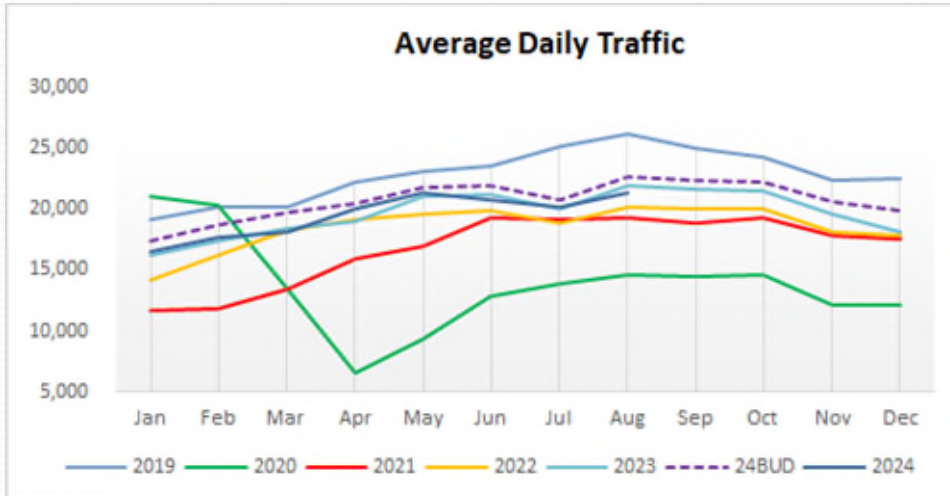
- On November 21, 2007, the NWPPHA entered into a Concession Lease Agreement with Brisa (as Northwest Parkway LLC). On March 9, 2017, Brisa sold 100% of its interests to a Consortium (NWP HoldCo LLC) for \$744M.
- At the end of the 99-year lease term, the Parkway operation reverts to the Authority.
- Upon execution of the Concession and Lease Agreement, the NWPPHA transferred control of all capital assets to the Concessionaire in exchange for the defeasances of all outstanding bonds and reduction of a major portion of other long-term liabilities (\$503M).
- The Concessionaire must operate the Parkway in accordance with the terms of the Agreement and all applicable laws and must keep the Parkway continuously open and operational for the use of all members of the public, 24 hours a day, every day, except for necessary closures permitted by the Agreement.

Milestones

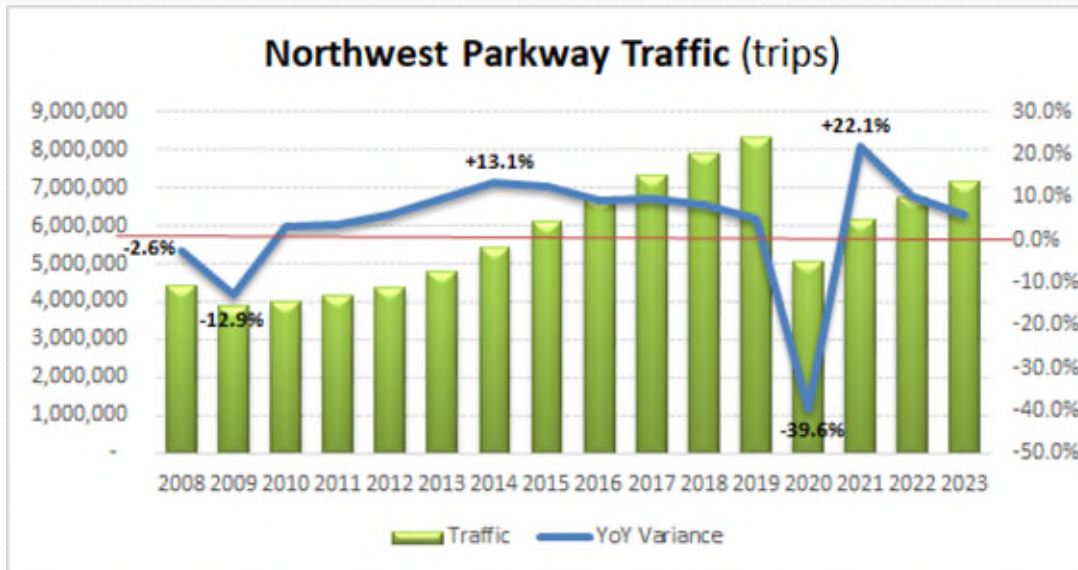
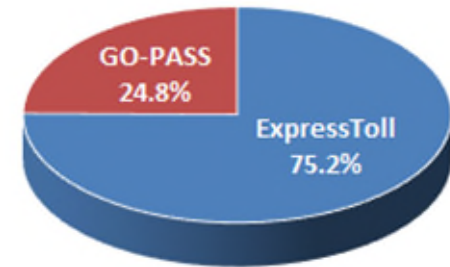


VINCI is a world leader in concessions, energy and construction, active in more than 120 countries. Vinci Group plays an active part in the energy and environmental transition of living spaces, infrastructure and mobility, while fostering social progress as a humanist group that stands for inclusion and solidarity.

Traffic

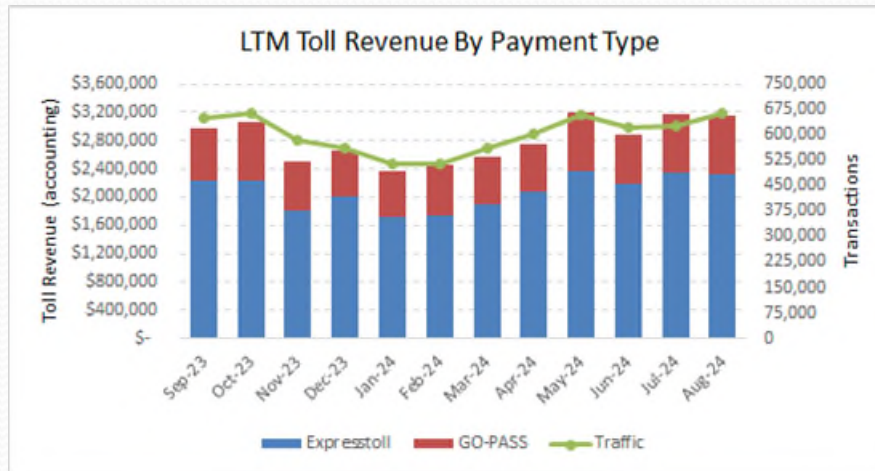
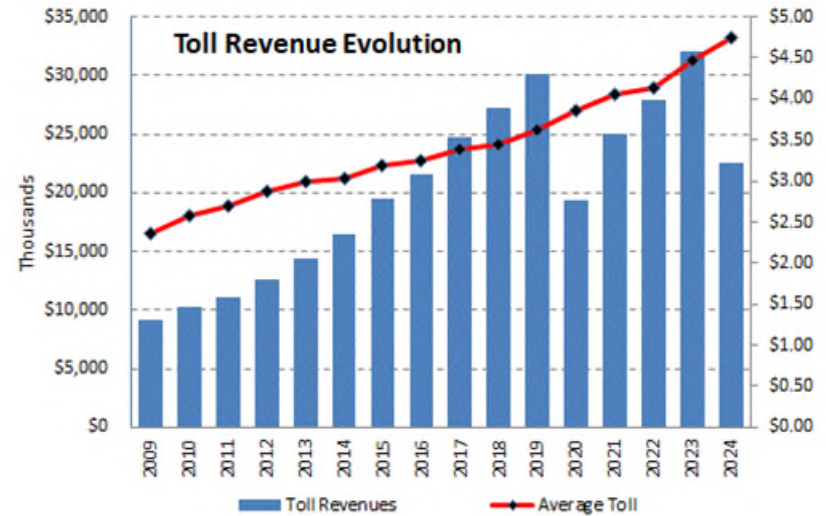
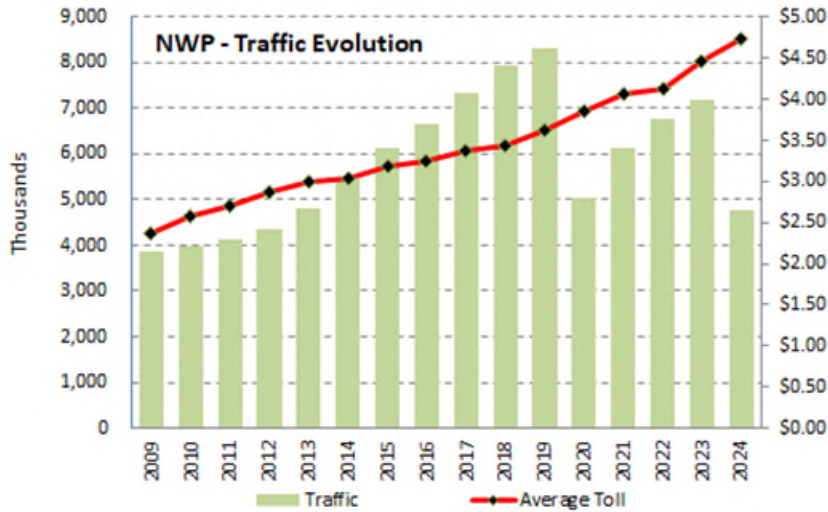


2024 Transactions by Payment Type



Post-Pandemic Traffic Trailing around 2017 Level

Toll Revenue



COVID significantly impacted traffic and revenue.

Traffic Demand risk is entirely bore by the Concessionaire.

Toll Rates



NWPKY TOLL RATES:

Mainline

- 2 Axles _____ \$5.50
- Per Each Additional Axle _____ \$5.50

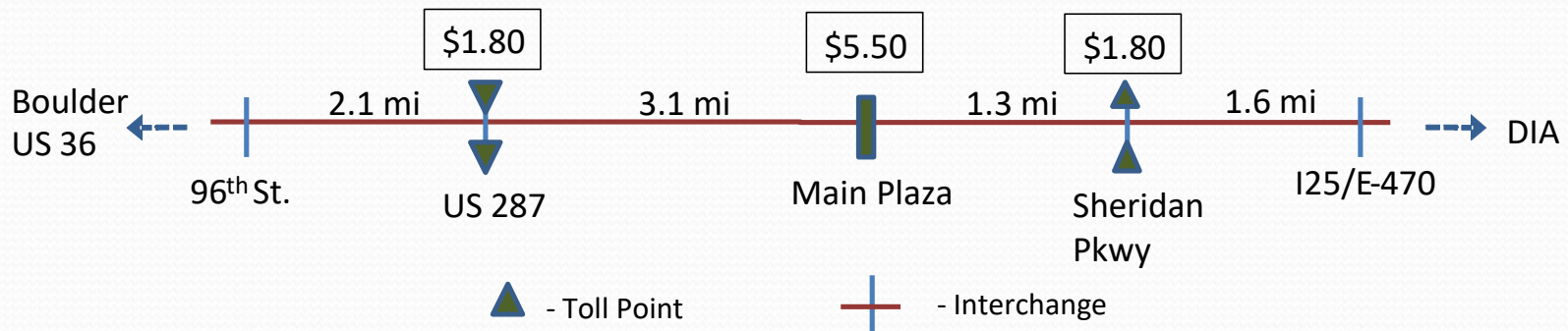
Ramps (Sheridan and US287 interchanges)

- 2 Axles _____ \$1.80
- Per Each Additional Axle _____ \$2.45

Annual toll rate increase is indexed to a maximum of:

- US GDP per Capita (BEA);
- US CPI (BLS);
- or 2%

Note: Additional fees may apply depending on the payment method.



Toll rates are regulated by the Concession Agreement and overseen by the Authority

Project Oversight

2023 Annual Inspection conducted in August through September by Stantec Consulting Services.

“The scope of inspection for 2023 was to inspect the infrastructure, safety, and tolling facilities within the limits of the NWP.”

The 85 inspected items averaged a score of **4.87 out of 5.00**. With (1) Category-1 defect (fixed), and (13) Category-2 defects.

- *Category 1 defect: defects that present an immediate hazard to users.*
- *Category 2 defect: defects that **do not constitute an immediate hazard to users.***

Monthly inspections throughout the year have reflected the same overall consistent results of a good asset condition.



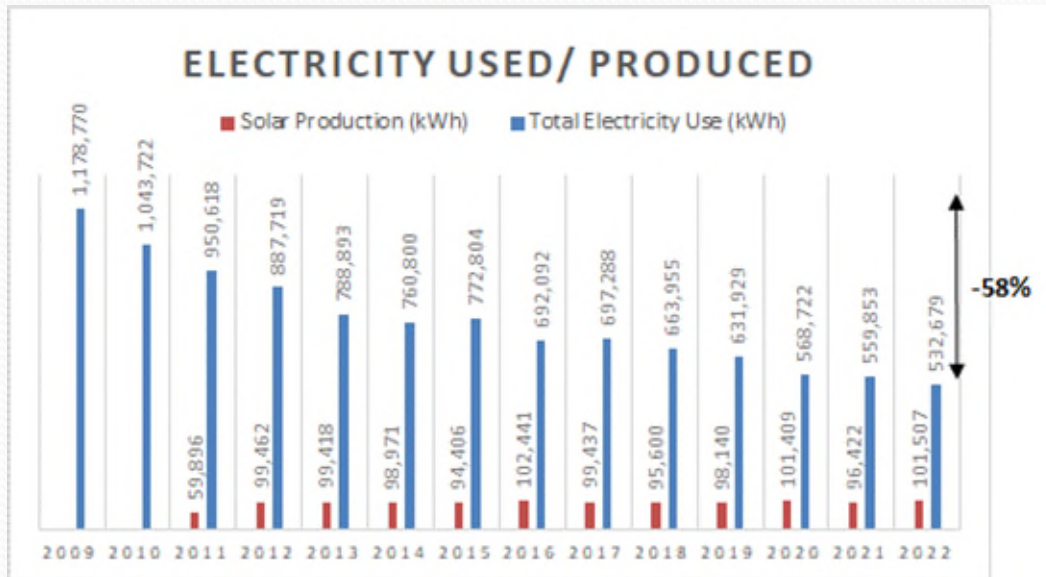
“Under separate task order agreements, Stantec performed supplemental inspections of major bridges and buried culvert structures, minor structures, overhead sign structures, variable message sign structures, high mast and mid mast lighting structures, toll plaza canopy structure, and toll plaza pedestrian tunnel.”

Inspections show the road to be Safe, Fully functional and Compliant

Sustainability – Solar Program

NWP reduced its electricity usage by 58% over the past 13 years.

NWP solar project, so far, accounted for an estimated cost savings of over \$18k.

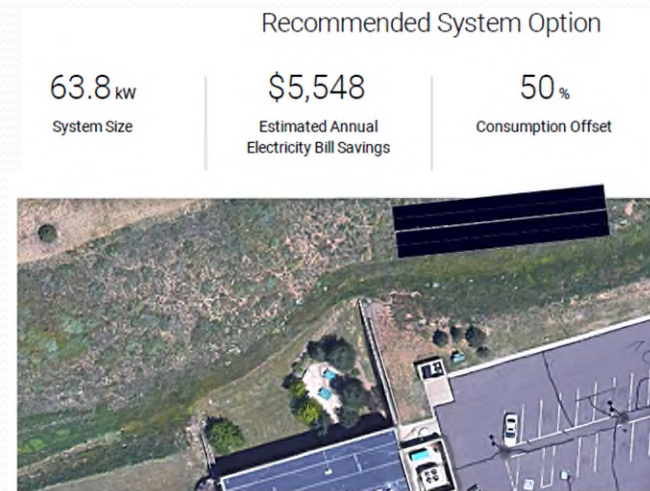
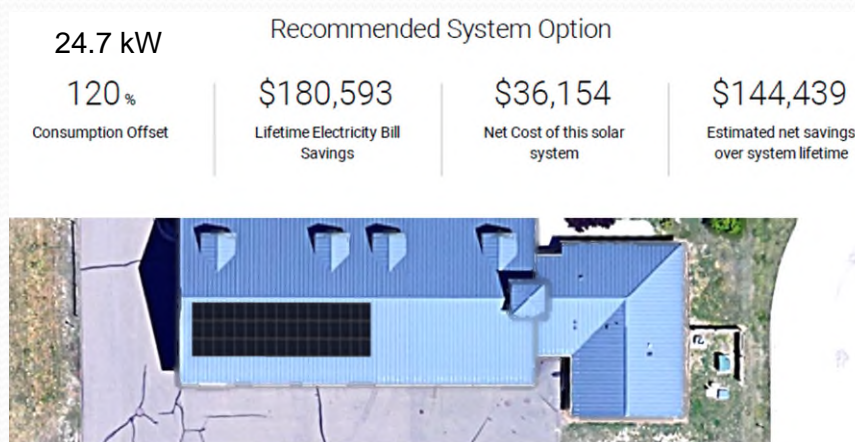


- ✓ NWP was pioneer adopting renewable energy, offsetting its carbon footprint since 2011
- ✓ 7 solar sites (63 kW) have produced over 1M kWh, equivalent to 790 tons of CO2 emissions

“Brightening” NWP’s Operational Performance

Solar Expansion Initiative

NWP is expanding its solar capacity (by 2.4x) by adding solar panels at the Office and Maintenance buildings, towards the project's Net-Zero Target!



The Authority agreed to partially fund environmentally sustainable initiatives, using the mineral rights royalties.

\$290k total investment (85% funded by the Authority) – ETA mid 2025

The project is invested on “Environmental Social Governance”. List of initiatives in 2023/24:

- ✓ Installed two level-2 EV charging stations at the office building as part of the company’s effort towards net-zero goals. Benefiting from a state grant to fund 50% of the cost.
- ✓ Partnered with non-profit “The Ray” to do a GIS mapping of all the Parkway’s right-of-way for solar potential.
- ✓ On bio-diversity, NWP did a small test-site using native pollinating species.
- ✓ Sponsored a few street clean up initiatives done by the Stargate School National Honor Society students.
- ✓ Started an internship program for neuro-divergent adults (autism spectrum) doing image review.
- ✓ Donated \$23k unused funds allocated to the Marshall Fire relief program, to local non-profits.
- ✓ Co-chair of IBTTA Sustainability and Resilience task force helping draft a Sustainability & Resilience Framework for the Association.



Thank You

