

A woman with long dark hair, wearing a dark t-shirt and a plaid skirt, is petting a brown horse in a grassy field. Two dogs, one tan and one white, are sitting in the grass. In the background, a herd of black and white cows is grazing. The scene is set in a rural area with trees and a blue sky with light clouds.

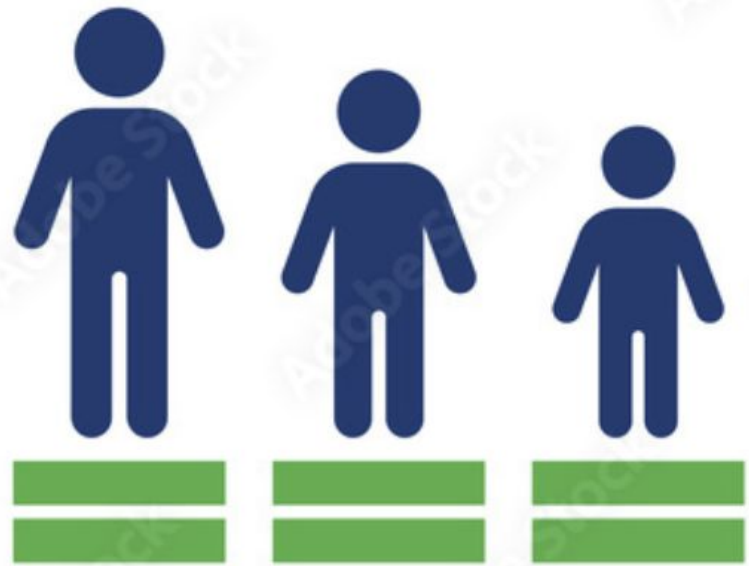
Safeguarding the Health of Colorado Families

Michael J. Blackwell, DVM, MPH

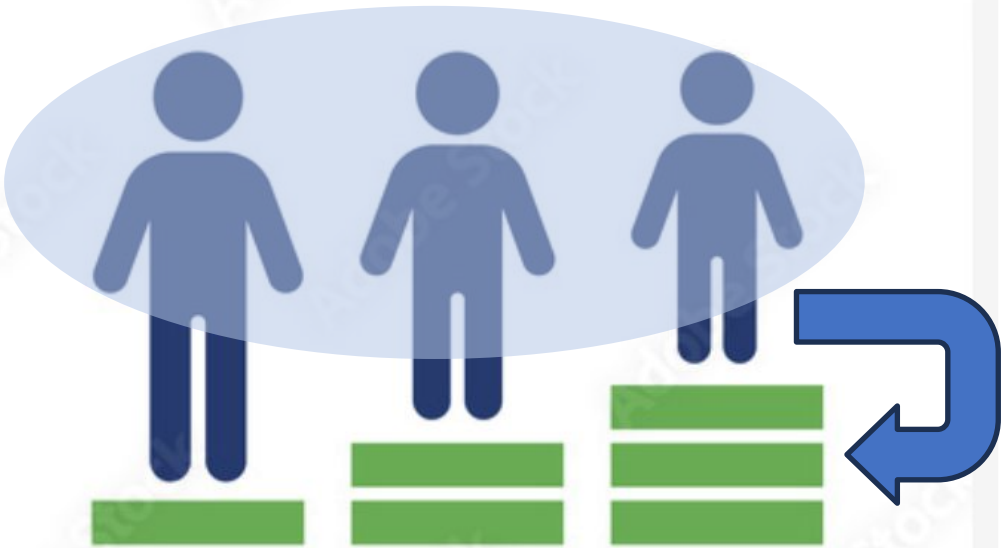
Assistant Surgeon General, USPHS (Ret.)
Director, Program for Pet Health Equity
University of Tennessee
pphweb@utk.edu

Serving Families, Pets and Communities

AlignCare



VS



EQUALITY

EQUITY

Adobe Stock | #539424464

Access to Veterinary Care Report

FREE Download at
<https://pphe.utk.edu>



ARTICLE IN PRESS

Advances in Small Animal Care ■ (2023) ■-■

ADVANCES IN SMALL ANIMAL CARE

Access to Veterinary Care—A National Family Crisis and Case for One Health

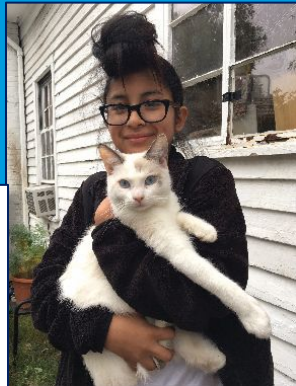
Michael J. Blackwell, DVM, MPH*, Augusta O'Reilly, MSSW, LCSW, VSW

College of Social Work, Center for Behavioral Health Research, University of Tennessee, 600 Henley Street Suite 221, Knoxville, TN 37996, USA

Blackwell, M. J., & O'Reilly, A. (2023). Access to Veterinary Care—A National Family Crisis and Case for One Health. *Advances in Small Animal Care*. <https://doi.org/10.1016/j.yasa.2023.05.003>

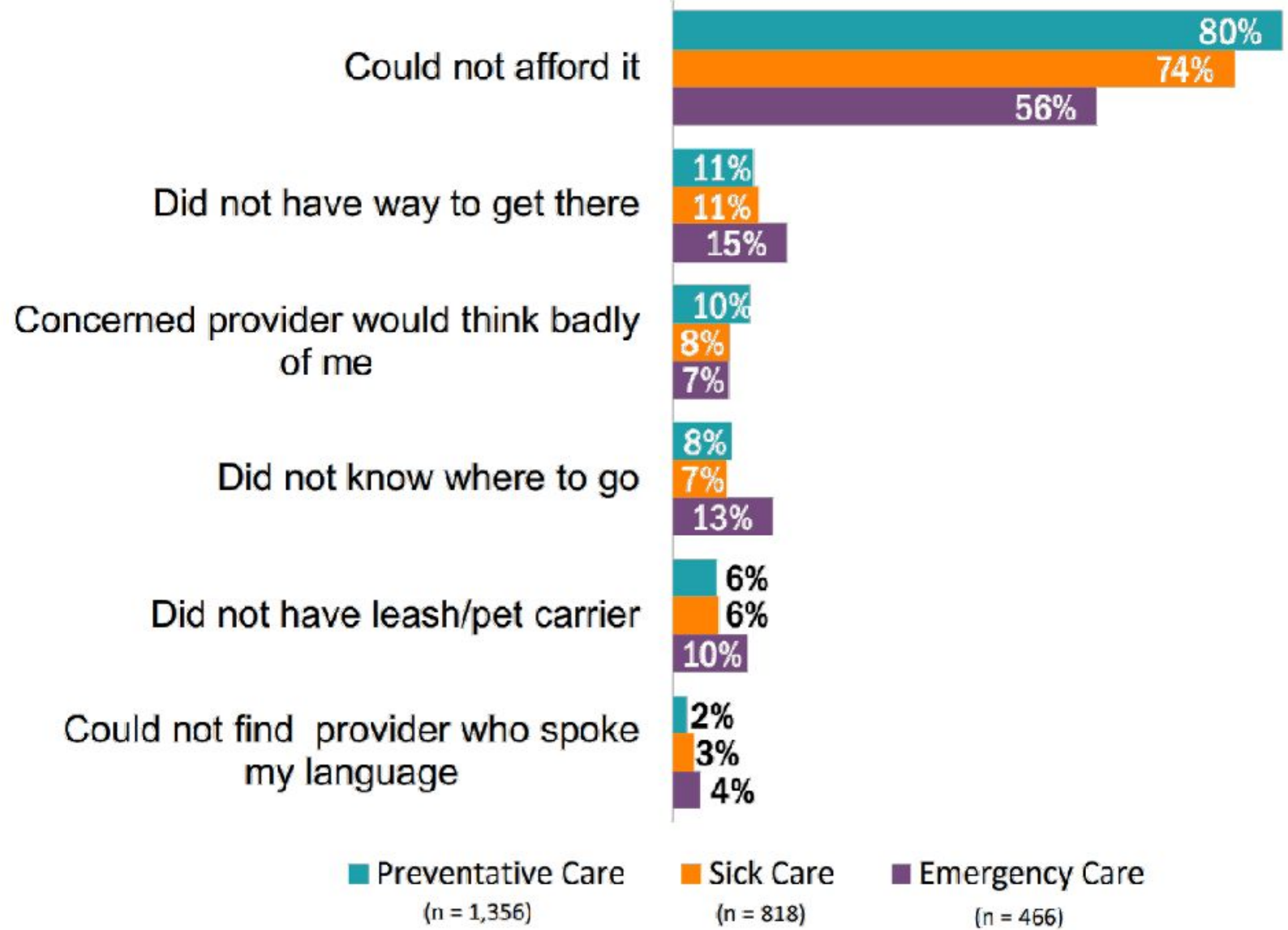
Bonded Family Society

70% of households in the U.S. have pets
~ 40% with children
95% consider their pet a family member



Millions of families struggle to access veterinary care:

- Before COVID-19
 - 28% of pet owners reported a barrier in the past two years
 - ~29 million dogs & cats lived in SNAP households
- Millions more pets in struggling middleclass families.



The Relationship Imparts Health Benefits

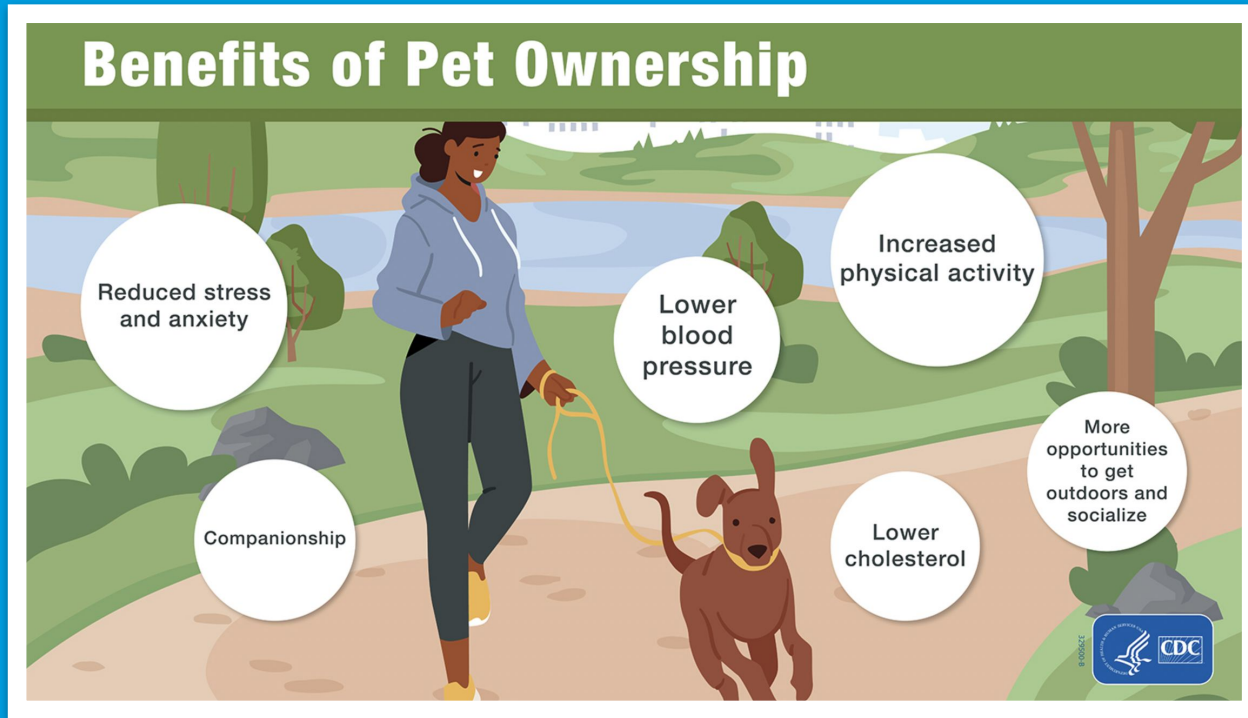


TABLE 1

Benefits of the Human–Animal Bond

Physical	<ul style="list-style-type: none">• Increased physical activity• Decreased physical isolation• Hypertension management and prevention• Cardiovascular risk reduction
Emotional	<ul style="list-style-type: none">• Joy• Emotional comfort• Security• Companionship• Decreased social isolation

Data from Wein H, ed. The Power of Pets. News in Health (NIH). March 6, 2018. Accessed January 10, 2023. <https://newsinhealth.nih.gov/2018/02/power-pets>.

Shrinking Middle-class

% of U.S. aggregate household income held by lower-, middle- and upper-income households

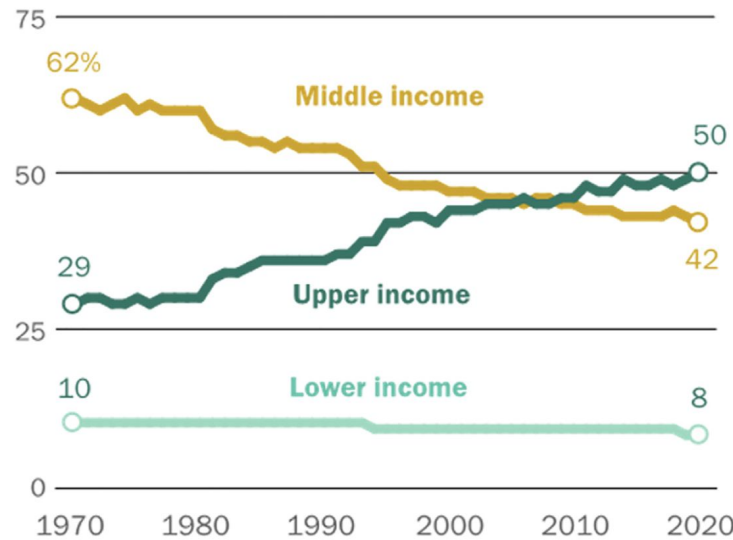
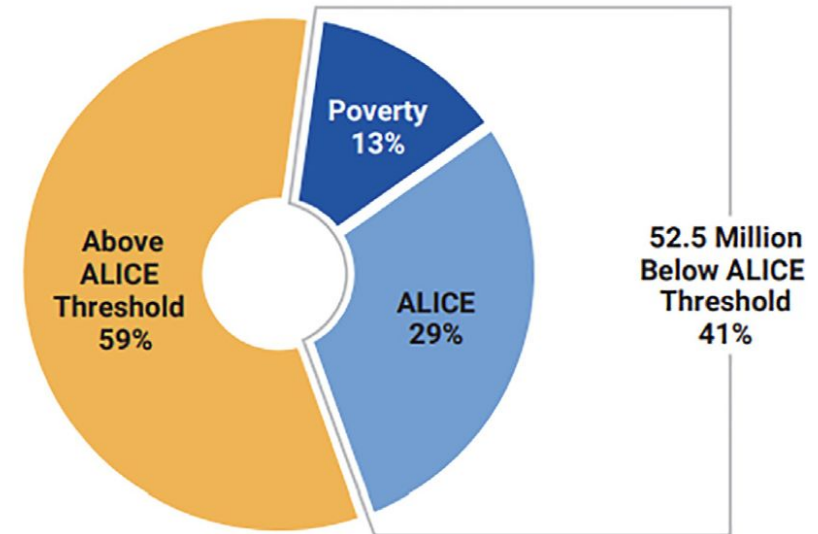


FIG. 2 Share of aggregate income held by US middle class has plunged since 1970. Note: Households are assigned to income tiers based on their size-adjusted income in the calendar year before the survey year. Their unadjusted incomes are then totaled to compute the share of US aggregate household income held by each income tier. Shares may not add to 100% due to rounding. (From Kochhar R, Sechopoulos S. How the American middle class has changed in the past five decades. Pew Research Center. April 20, 2022. Accessed January 5, 2023. <https://www.pewresearch.org/fact-tank/2022/04/20/how-the-american-middle-class-has-changed-in-the-past-five-decades/>. Source: Pew Research Center analysis of the current population survey, annual social and economic supplement (IPUMS).)



* In the U.S., out of 127 million households, there were 16.2 million (12.8%) in poverty plus 36.3 million (28.6%) that were ALICE, which totals to 52.5 million (41.4%) below the ALICE Threshold and rounds to 41% in this Report.

FIG. 1 Percentage of US Households who are Asset Limited, Income Constrained, Employed (ALICE). (From United for ALICE. *On Uneven Ground - ALICE and Financial Hardship in the U.S.*; 2020:3.)

One Health

An approach that recognizes that the health of people is closely connected to the health of animals and our shared environment.

One Health Healthcare System

A network of organizations, providers, and resources working together to deliver services to individuals and communities.



Family Support

- Social Service
- Public Health



Veterinary Service Provider

- For-profit
- Non-profit

AlignCare

Serving Families, Pets and Communities



Community Resources

- Private Citizens
- Businesses & Foundations
- Government



Serving Families, Pets and Communities

AlignCare

A Beloved Pet's Death Can Trigger Deep Grief. Finding Support Can Be Tough

Nov. 28, 2022, at 7:40 a.m.

August 2, 2022

Lyme Disease Diagnosis on the Rise

With rising cases, experts discuss Chikungunya spread in the Americas

4 May 2023

As dengue cases increase globally, vector control, community engagement key to prevent spread of the disease

3 Aug 2023

LOCAL NEWS

High levels of rare deer tick virus detected in Clearfield County

by: [Kelsey Rogers](#), [Yanni Tragellis](#)
Posted: Jan 20, 2022 / 10:43 AM EST
Updated: Jan 20, 2022 / 05:41 PM EST

U.S. Unprepared for Dangers Posed by Zoonotic Diseases, New Analysis Concludes

Feb 16, 2023

COVID-19 is more widespread in animals than we thought

BY DOUGLAS MAIN

Ongoing avian influenza outbreaks in animals pose risk to humans

Situation analysis and advice to countries from FAO, WHO, WOAHA

12 July 2023 | Statement | Geneva/Paris/Rome | Reading time: 6 min (1743 words)

Mosquito and Tick-Borne Illnesses on the Rise: What to Know

LOCAL NEWS

More cases of ringworm detected by local veterinarian clinics

Colorado Department of Agriculture confirms cases of anthrax

Last confirmed cases were in 2012, when more than 75 head of cattle died in a multi-premises outbreak in the northeast.

July 29, 2022



Bonded Families


Veterinary Service Providers

Family Support Agencies

Animal Welfare Organizations



Communities



**You have the power
to safeguard the health of
Colorado Families**

Serving Families, Pets and Communities

AlignCare