

Previous State-Funded ASR Studies

- Colorado Geological Survey (CGS) Artificial Recharge of Ground Water in Colorado: A Statewide Assessment (2004)
- CWCB SB06-193 Underground Storage Study for the South Platte and Arkansas River Basins
- CGS Upper Black Squirrel Creek Basin Aquifer Recharge and Storage Evaluation (2008)
- CGS Lost Creek Aquifer Recharge and Storage Study (2011)

Aquifer Storage Pilot Projects currently funded by CWCB

- Denver Basin Aquifer Recharge Pilot - South Metro Water Supply Authority - *(WSRF grant)*
- Lost Creek Alluvial Aquifer Storage Pilot- City of Aurora *(2016 Projects Bill grant - SB16-174: Sec. 8)*
- Trout Creek Project Alluvial Aquifer Storage Pilot - Upper Arkansas Water Conservancy District *(2016 Projects Bill grant - SB16-174: Sec. 8)*

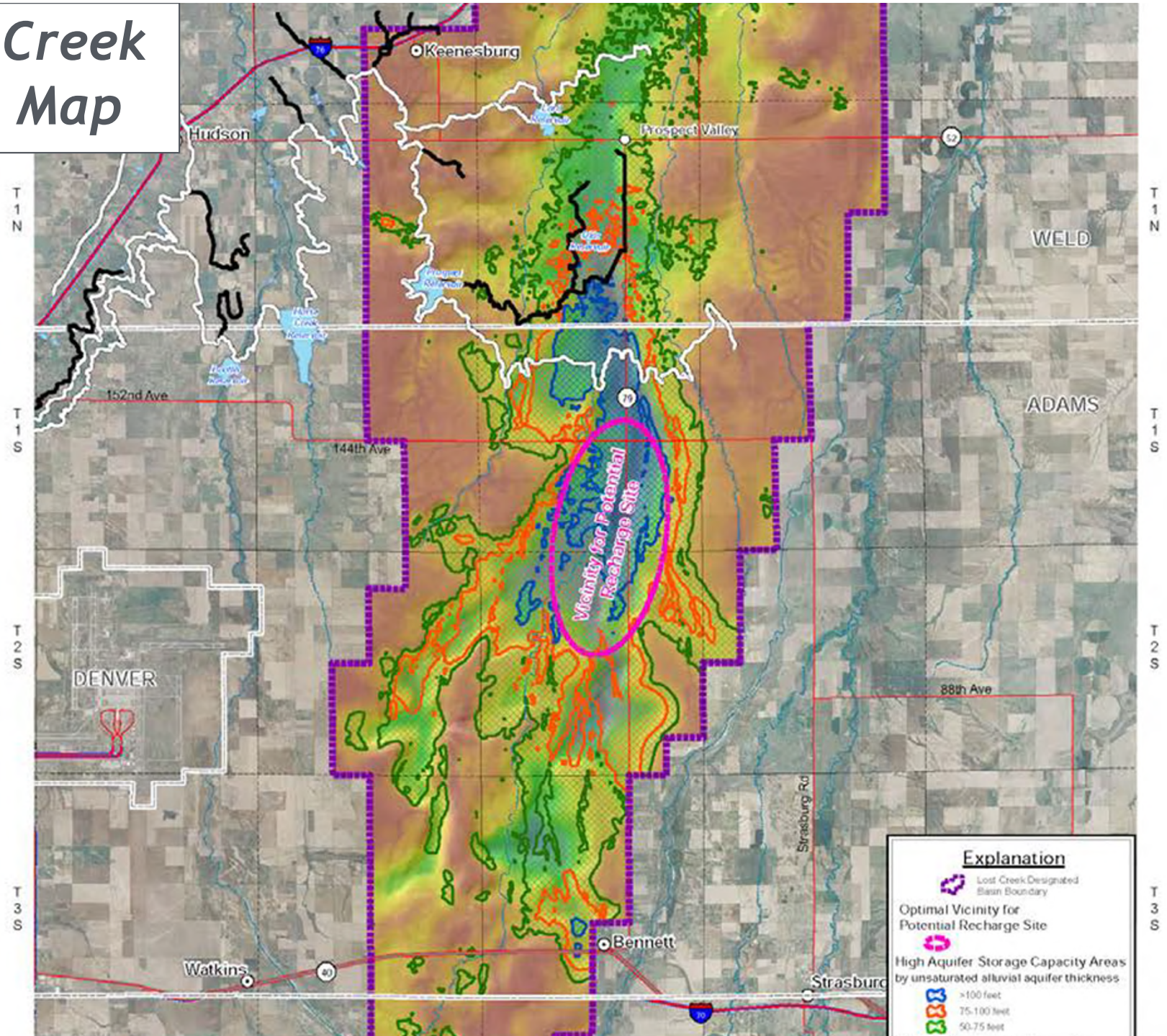
Denver Basin Aquifer Recharge Pilot Project

- Objective is to determine aquifer recharge's role in helping meet M&I water needs in the South Metro area
 - Test aquifer locations by artificially recharging water with varying water quality
 - Retrofit existing wells to determine the suitability of that location for ASR
 - Understand effects of aquifer attributes and source waters on ASR
- Pilot-scale testing requested as aquifers vary significantly in their hydraulic characteristics to accept recharge water and to react chemically with injected water
- Identified in the South Platte/Metro BIP
- Highly ranked site in the SB06-193 Underground Storage Study by CWCB

Lost Creek Alluvial Aquifer Storage Pilot Project

- Objective is to identify suitable recharge site using site-specific data collection that builds on previous studies
 - Fieldwork will include geophysical survey, borehole drilling, and infiltrometer tests
- Identified in the South Platte/Metro BIP
- Highly ranked site in the SB06-193 Underground Storage Study by CWCB
- One of the options being investigated in the HB16-1256 South Platte Storage Study

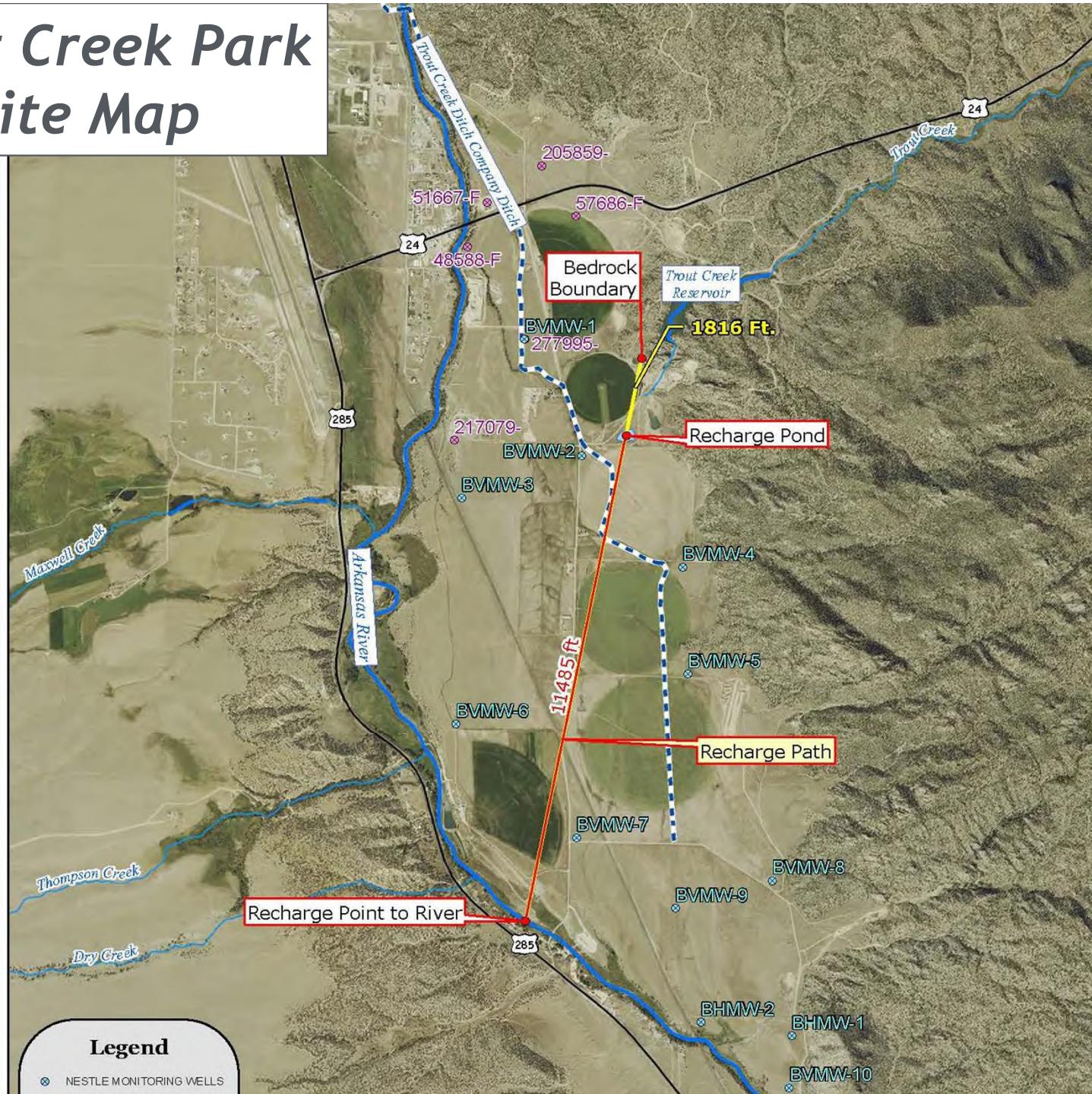
Lost Creek Site Map



Trout Creek Park Alluvial Aquifer Storage Pilot Project

- Objectives include: install recharge pond delivery system and metering equip., monitor recharge rates and groundwater levels, install and monitor more test wells, and develop Phase 2 plan
- Identified in the Arkansas BIP
- Highly ranked site in the SB06-193 Underground Storage Study by CWCB

Trout Creek Park Site Map



Legend

● NESTLE MONITORING WELLS

