

Opioid & Other Substance Use Disorders Interim Study Committee

Gretchen Hammer, Medicaid Director

Dr. Judy Zerzan, Chief Medical Officer

Cathy Traugott, Pharmacy Clinical Supervisor

Lenya Robinson, Manager, Behavioral Health &
Managed Care Section

August 22, 2017



COLORADO

Department of Health Care
Policy & Financing

Our Mission

Improving health care access and outcomes for the **people** we serve while demonstrating sound stewardship of financial **resources**



COLORADO

Department of Health Care
Policy & Financing

Presentation Agenda

- Who We Serve in Medicaid
- Medicaid & the Opioid Epidemic
- Our Work to Combat the Opioid Epidemic



How Medicaid Clients are Impacted by the Opioid Crisis

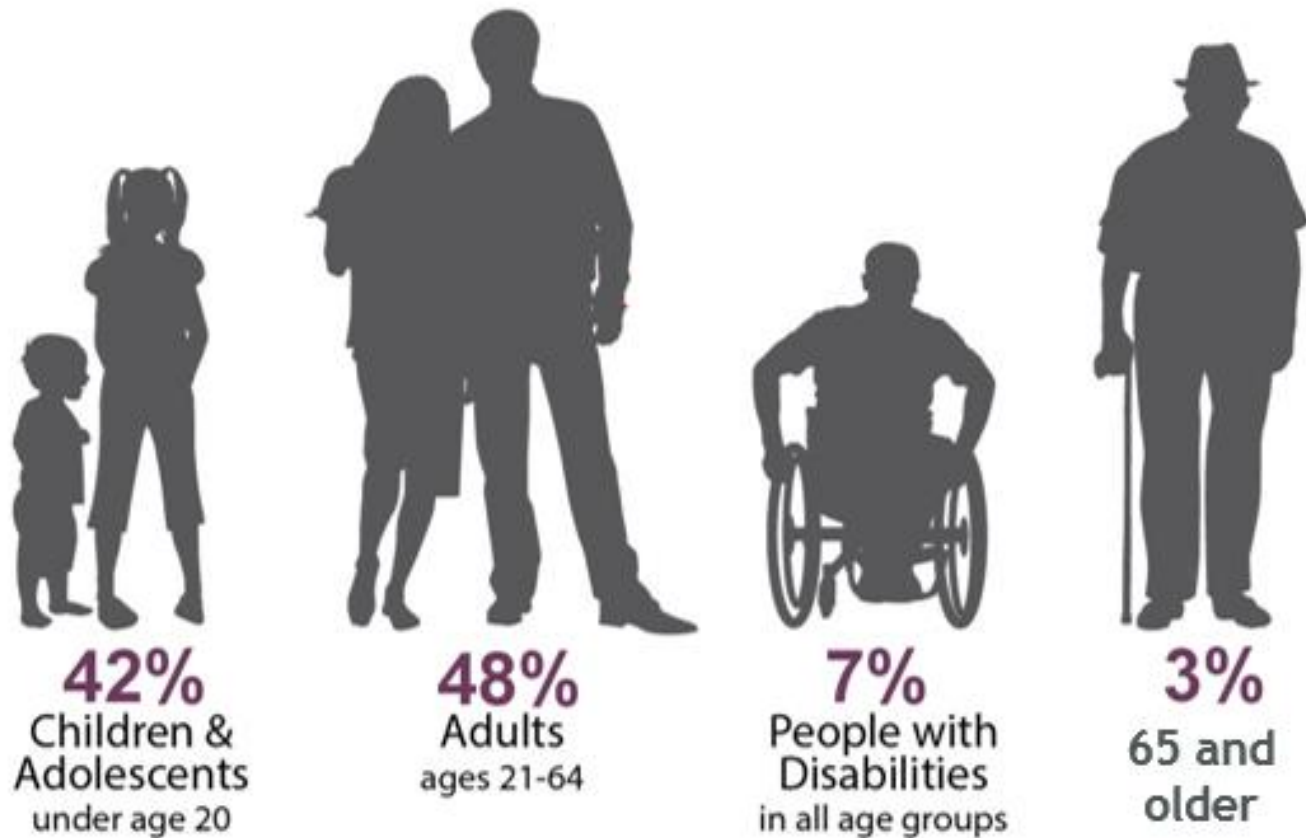


COLORADO

Department of Health Care
Policy & Financing

Who We Serve in Medicaid

FY 2015-16 Medicaid Caseload



2016 Federal Poverty Levels by Family Size

	Family of 1	Family of 4
133%	\$15,804	\$32,328

*Some earning more may still qualify.

Medicaid & the Opioid Epidemic

Type of use	Number of adults age 18–64	Percentage of all adults age 18–64	Percentage of adults age 18–64 in each coverage category		
			Medicaid	Private ¹	Uninsured
Illicit drug dependence or abuse, past year	6,674,356	3.4%	5.7%	2.4%*	5.4%
Illicit drug and alcohol abuse, past year	358,315	0.2	0.2	0.2	0.3
Illicit drug or alcohol abuse, past year	7,448,820	3.8	2.7	3.9*	4.7*
Pain reliever dependence, past year	1,430,552	0.7	1.3	0.5*	1.0
Pain reliever abuse, past year	444,013	0.2	0.5	0.1*	0.4
Misused pain reliever, past 30 days	3,309,245	1.7	2.6	1.3*	2.6
Ever misused pain reliever	24,194,171	12.4	14.0	11.7*	14.5
Misused OxyContin, past 12 months	1,581,181	0.8	1.2	0.6*	1.4
Ever used heroin	1,855,967	2.4	5.2	1.5*	3.2*
Heroin dependence, past year	555,291	0.3	0.8	0.1*	0.6
Ever used heroin and had pain reliever dependence, past year	535,853	0.3	0.8	0.2*	0.4*
Ever used heroin and ever misused pain reliever	1,123,879	1.4	3.3	0.9*	2.3*
Ever misused pain reliever and had heroin dependence, past year	164,051	0.2	0.6	0.1*	0.6

Source: MACPAC, June 2017, Chapter 2: Medicaid & The Opioid Epidemic

* Difference from Medicaid is statistically significant at the 0.05 level.



Opioids & Colorado Medicaid



87

prescription opioid overdose deaths were Medicaid members⁴



22.8%

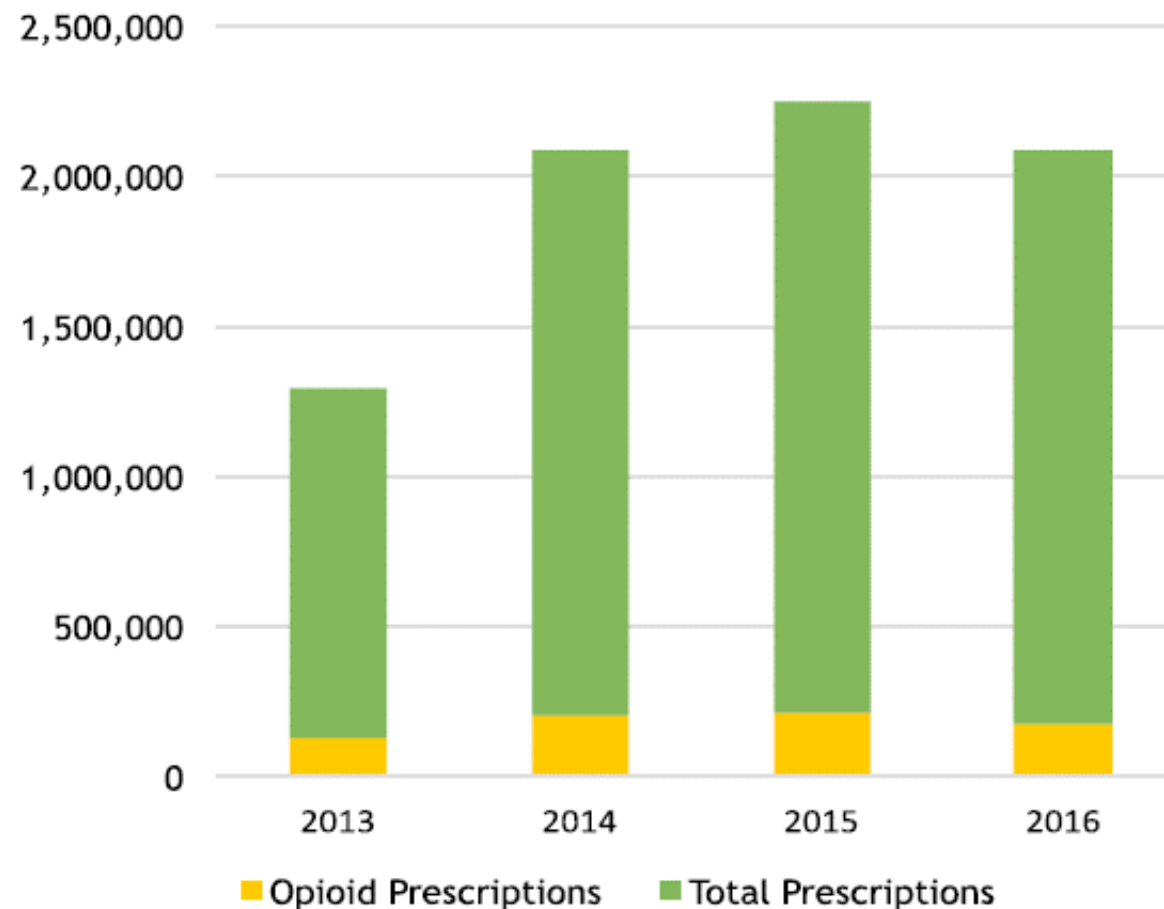
of Coloradans were Medicaid members³



28.8%

of total overdose deaths were Medicaid members⁴

Opioid and Total Prescriptions⁵



⁵Data is 4th Quarter MMIS data for each year.



During 2016

9.0%

of Rx were opioids⁵



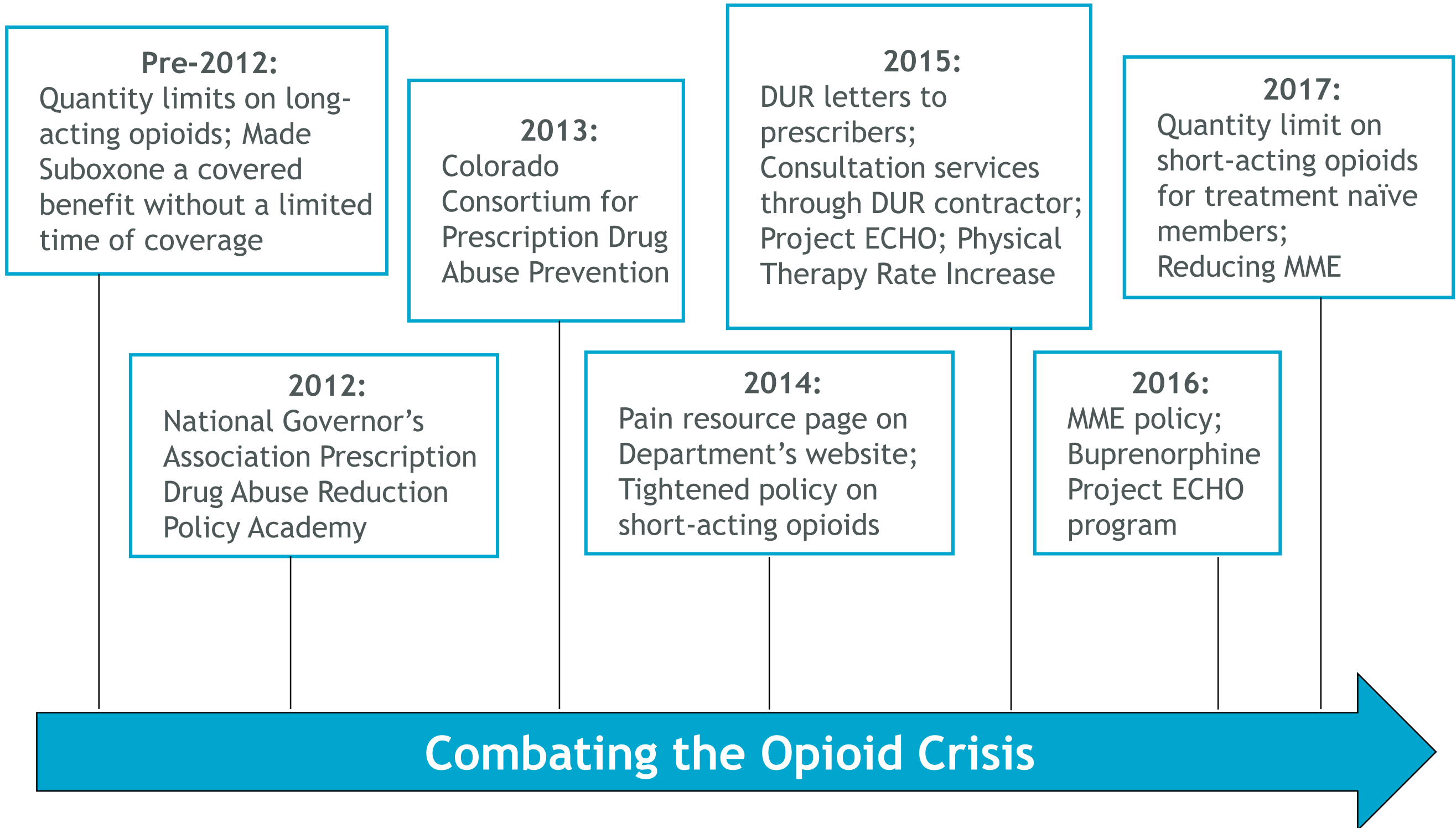
During 2013

11.3%

of Rx were opioids⁵



Our Work to Date



Designing Policies for Members Who May Need Opioids

Members with Acute Pain

Members with Long-Term Pain

Members with Addiction



COLORADO

Department of Health Care
Policy & Financing

Treating Acute Pain

Strategy 1
Limiting Supply of Opioids
Aug. 1, 2017

- 7-day supply filled initially
- Two additional 7-day refills
- Fourth refill request to require prior authorization and possible consultation with pain management physician

Strategy 2
Reducing daily MME
Oct. 1, 2017

- Total daily limit of MME will decrease from 300 MME/day to 250 MME/day
- Does NOT apply to members in palliative or hospice care, or those being treated for cancer

Treating Long-Term Pain

- Morphine Milligram Equivalent (MME) Policy
- Exclude Cancer and Sickle Cell Anemia
- Increased Payment Rate for Physical Therapy Services
- Chronic Pain Disease Management Program



COLORADO

Department of Health Care
Policy & Financing

Treating Addiction

- The outpatient substance use benefit was added in 2014 to the Behavioral Health Organization's scope of benefits.
 - Previously covered under Medicaid Fee-for-Service on limited basis.

- Services covered:

Medication
Assisted
Treatment

Social
detoxificati
on services

Targeted
case
management

Individual,
group, and
family
counseling

Other Related Work Related to Substance Use

- HB17-1351: Study Inpatient SUD Treatment
- Federal Mental Health Parity and Addiction Equity Act (MHPAEA) Analysis
- Workforce
- Provider education
- Public outreach
- Utilize existing tools like the PDMP



Questions?



COLORADO

Department of Health Care
Policy & Financing