



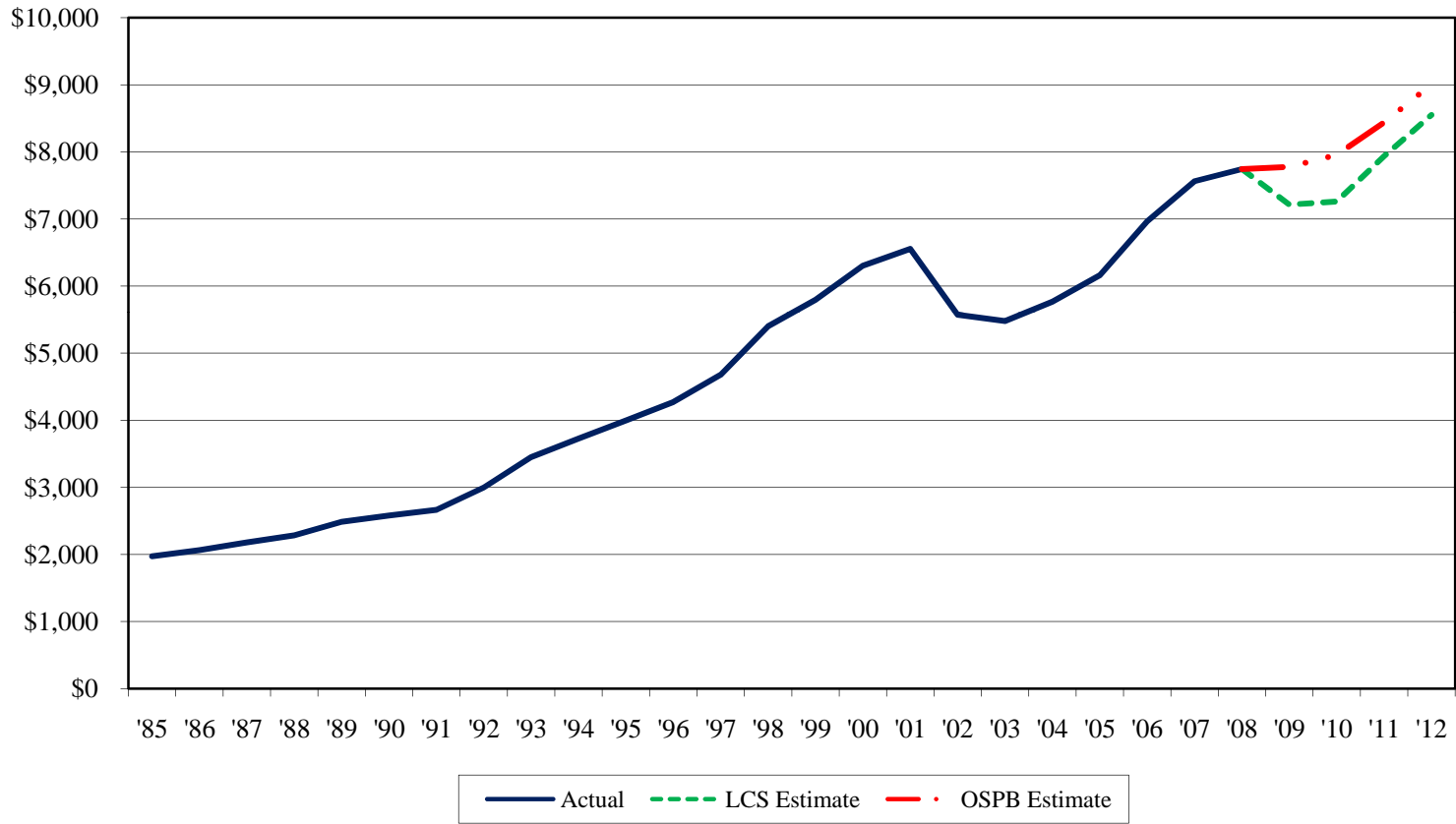
**State of Colorado**  
**General Fund Overview Presentation**

**Prepared by JBC Staff**

**January 2009**

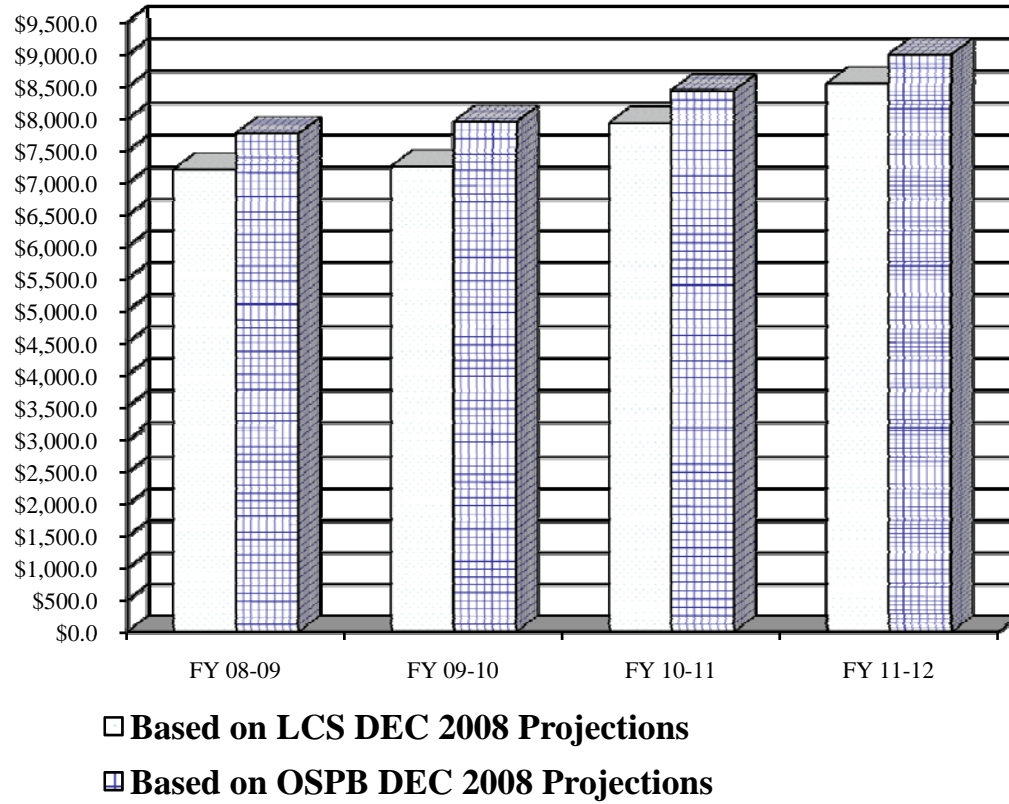
Jan-09

# State of Colorado Gross General Fund Revenues (in Millions)



# Gross General Fund Revenue Projections

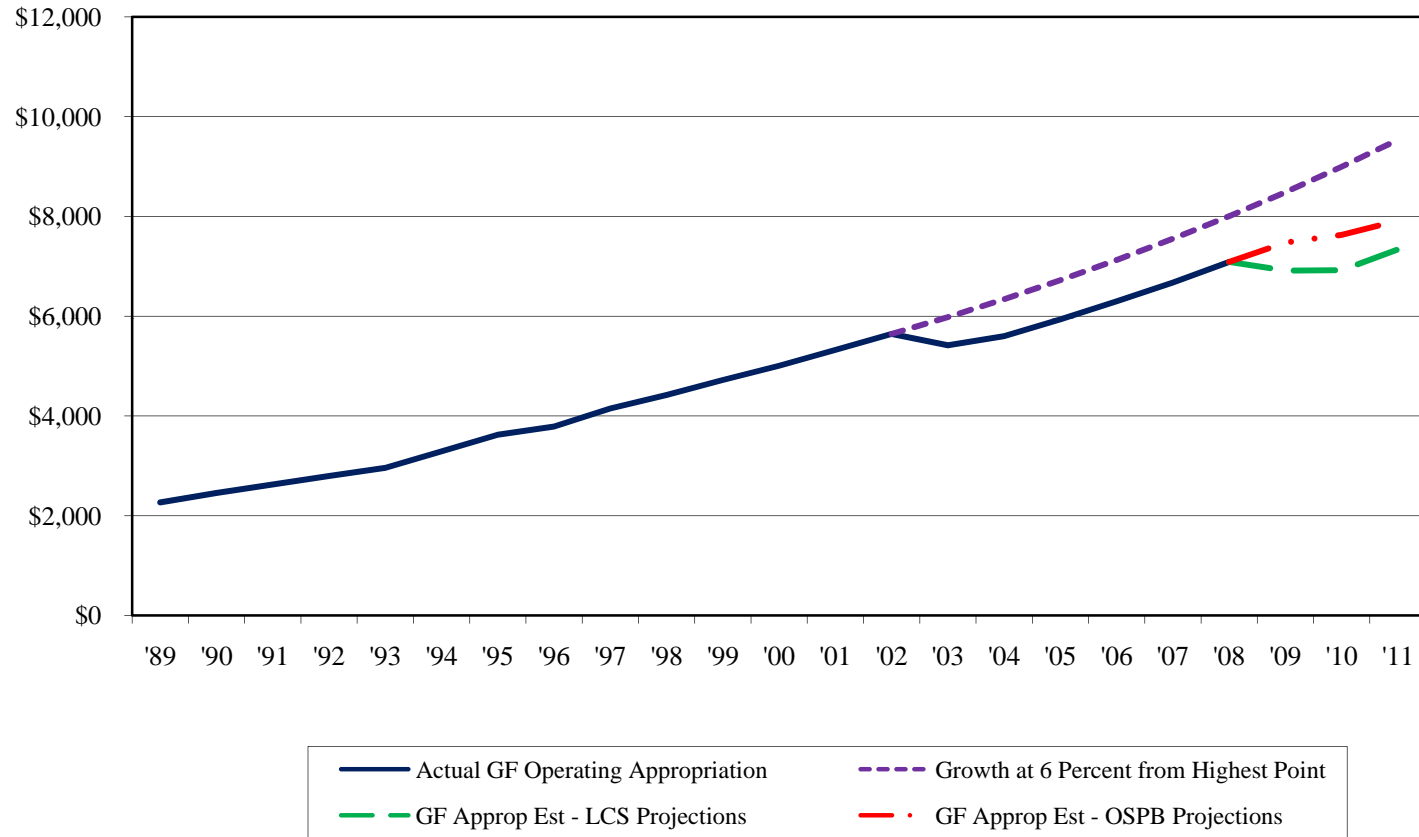
(in Millions)



# General Fund Operating Appropriations

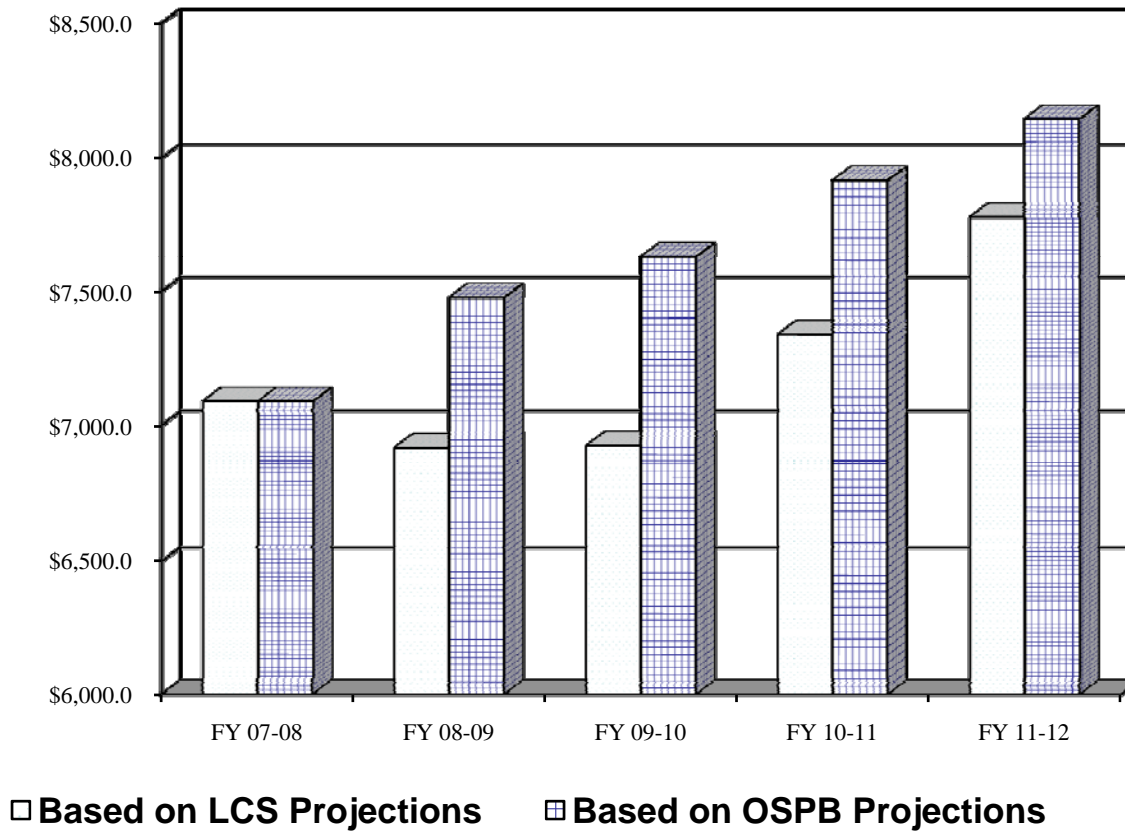
(in Millions)

---



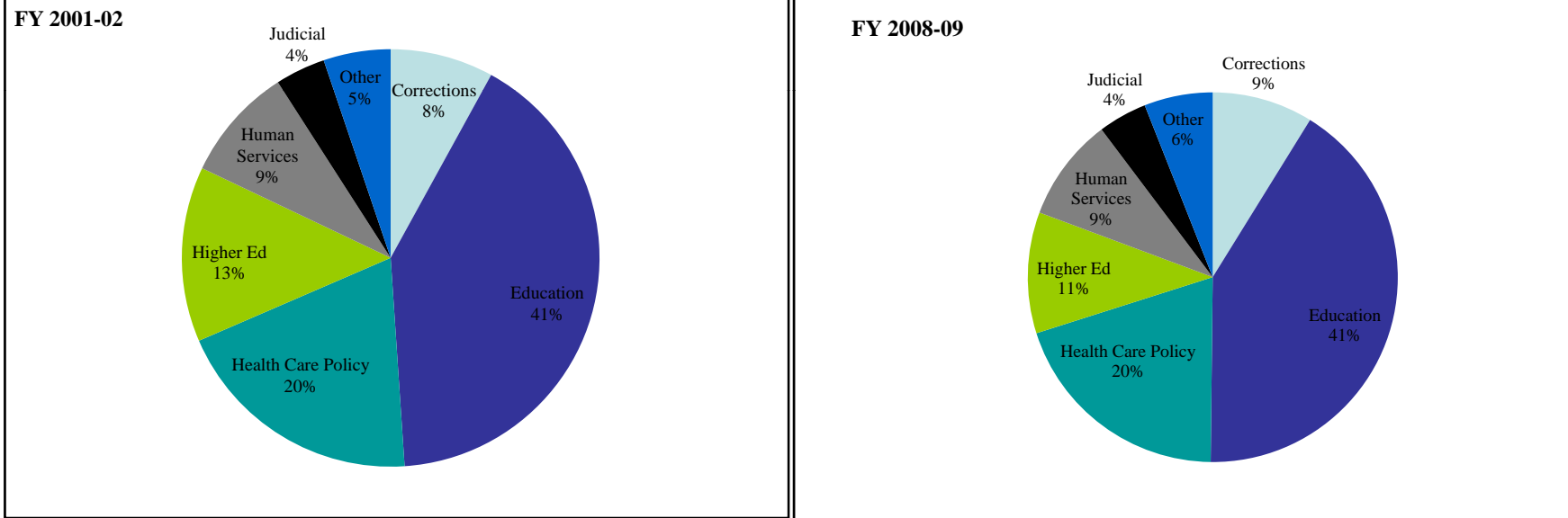
# Adjusted General Fund Appropriations Base

(in Millions)



# State of Colorado “Big Six” Pie Charts Percentage of General Fund Appropriations

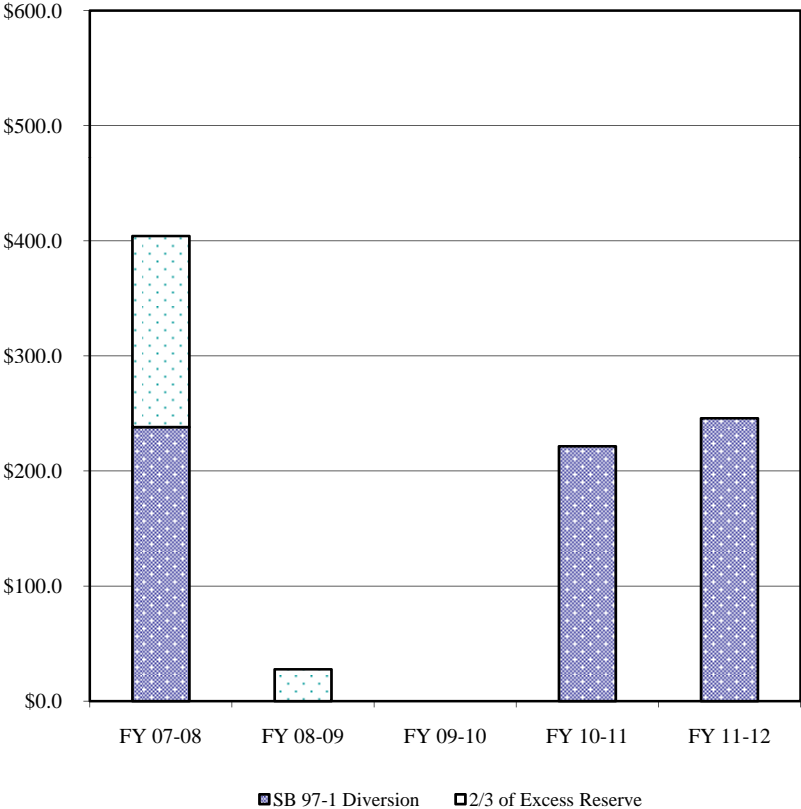
---



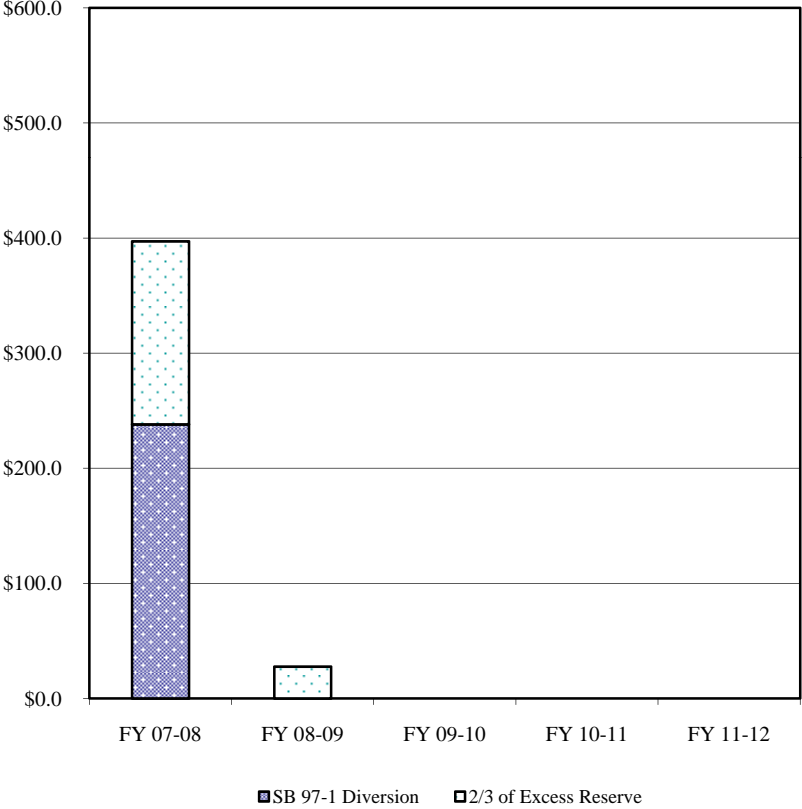
# Transfers to the HUTF Based on December 2008 Revenue Projections (in Millions)

---

LCS Forecast



OSPB Forecast



## FY 2008-09 General Fund Appropriations

Departments	FY 2008-09 Appropriation	FY 2008-09 Cum'd	FY 2008-09 Cum'd	
Education	3,175,366,143	3,175,366,143	7,519,189,295	
Health Care Policy	1,528,360,914	4,703,727,057	4,343,823,152	
Higher Education	812,937,855	5,516,664,912	2,815,462,238	
Human Services	694,456,823	6,211,121,735	2,002,524,383	
Corrections	676,820,771	6,887,942,506	1,308,067,560	Amount of Reduction per LCS Forecast = \$605.3 m
Judicial	327,474,226	7,215,416,732	631,246,789	▼
Public Safety	82,378,618	7,297,795,350	303,772,563	
Revenue	70,975,192	7,368,770,542	221,393,945	
Legislature	34,889,177	7,403,659,719	150,418,753	
Natural Resources	32,095,945	7,435,755,664	115,529,576	Amount of Reduction per OSPB Forecast = \$44.4 m
Public Health	26,338,837	7,462,094,501	83,433,631	▼
Governor	16,004,195	7,478,098,696	57,094,794	
Law	9,645,044	7,487,743,740	41,090,599	
Local Affairs	8,584,536	7,496,328,276	31,445,555	
Agriculture	7,695,912	7,504,024,188	22,861,019	
Personnel	6,378,983	7,510,403,171	15,165,107	
Military Affairs	5,854,264	7,516,257,435	8,786,124	
Regulatory Agencies	1,578,627	7,517,836,062	2,931,860	
Treasury	1,031,672	7,518,867,734	1,353,233	
Labor	0	7,518,867,734	321,561	
State	0	7,518,867,734	321,561	
Transportation	0	7,518,867,734	321,561	
Capital	0	7,518,867,734	321,561	
Controlled Maint	321,561	7,519,189,295	321,561	
Total	7,519,189,295			