



COLORADO

State Board of Parole

The mission of the Parole Board is to increase public safety by evaluating an individual's potential for successful reintegration to the community through the use of innovative evidence informed practices.

Role of the Parole Board

The Parole Board is a type 1 board (§17-2-201(1)(a), C.R.S.).

- Type 1 boards exercise its prescribed statutory powers, duties, and functions independently of the principal department (§24-1-105, C.R.S.).
- The Department of Corrections serves as the principal department for the Parole Board (§24-1-128.5(3), C.R.S.).



COLORADO
State Board of Parole

Parole Board Guiding Philosophy

When considering release, the Parole Board's central focus is:

- the risk to reoffend (*§17-22.5-404(1)(a), C.R.S.*),
- based on actuarial risk assessments (*§17-22.5-404(1)(b), C.R.S.*), and
- through a structured decision making process (*§17-22.5-404(1)(c), & (d), C.R.S.*)

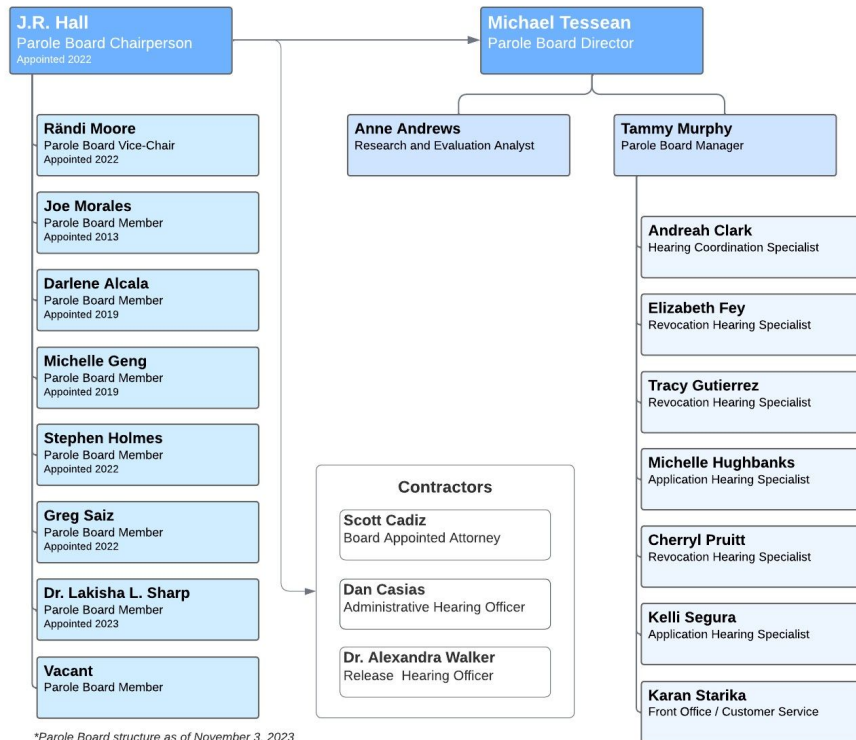


COLORADO
State Board of Parole



COLORADO

State Board of Parole



*Parole Board structure as of November 3, 2023

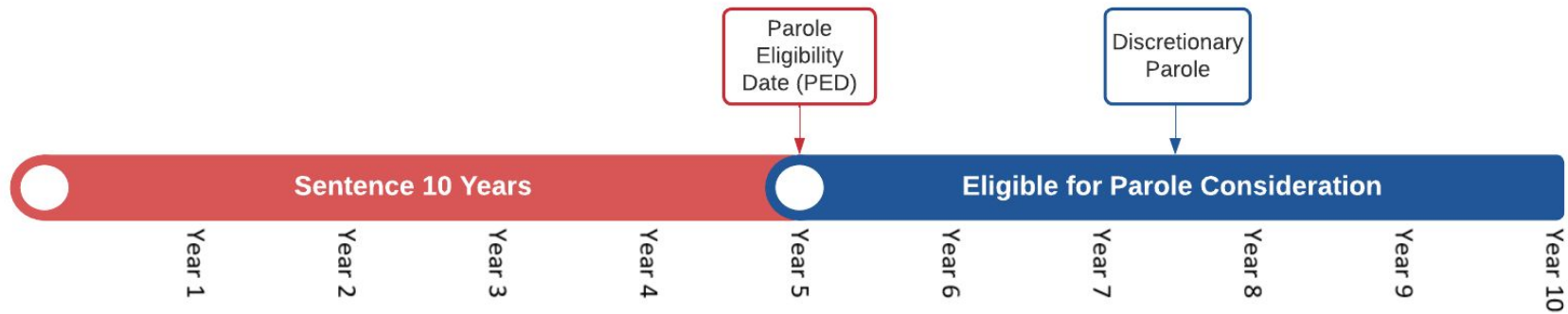
Primary Functions of the Parole Board

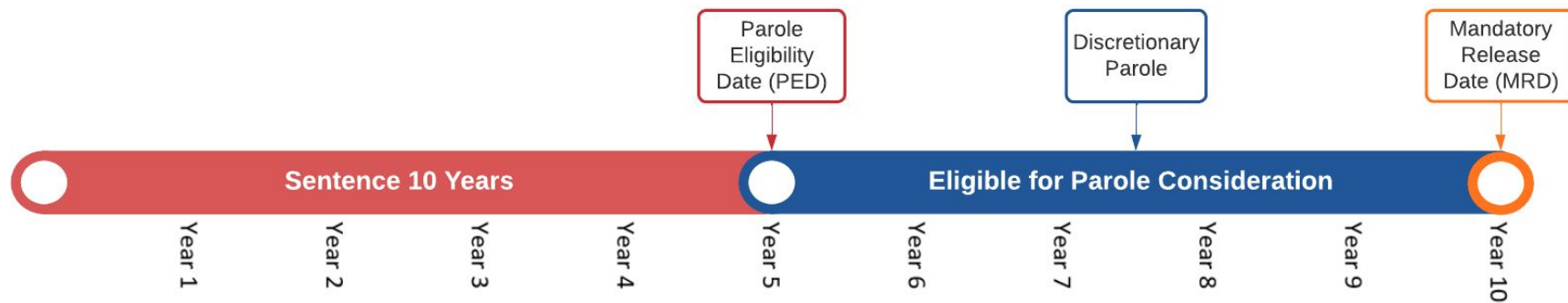
- Evaluating eligible offenders for consideration of release to parole supervision by the Division of Adult Parole.
 - The Parole Board does not have any influence over supervision practices by the Division of Adult Parole nor any placements to Community Corrections.
- Setting parole conditions to bolster the success upon reentry into the community.
- Preside over revocation hearings for parolees who have violated the terms and conditions of their parole agreement.











Revocations

- If a parolee violates the conditions of their parole agreement, the community parole office can file a complaint with the parole board.
 - Can only be revoked for technical violations once the community parole officer has exhausted all appropriate or available intermediate sanctions, treatment, and support services.
- The parole board member will preside over the revocation hearing.
 - Revocation hearings are quasi-judicial and basic due processes apply.



FY2023 Revocation Hearing Outcomes

Revoked vs Continued

Continued of parole (not revoked)	28%
Parole revoked	72%

Reason for revocation

Revocation for new felony charge(s)	13.0%
Revocation for felony and misdemeanor charge(s)	3.1%
Revocation for new misdemeanor charge(s)	41.1%
Revocation for traffic/Petty offense(s)	2.1%
Technical Violation Revocation for Absconding	19.5%
Other Technical Violations only***	20.8%
Other revocation type	0.4%

***Does not include continuance hearings or self-revocation request decisions.**

****Other Technical Violations Only category includes inmates returned for termination from sex offender treatment, weapons violation(s), and/or contacting a victim under a protection order.**



COLORADO
State Board of Parole

Release Outcomes

1-Year Return Rates by Parole Release Type

