

BUDGET IN BRIEF



**COLORADO GENERAL
ASSEMBLY**

JOINT BUDGET COMMITTEE

FISCAL YEAR 2002-03

**STATE OF COLORADO
JOINT BUDGET COMMITTEE**

REPRESENTATIVES:

Brad Young, Chairman
Gayle Berry
Todd Salzman



STAFF DIRECTOR:
Kenneth Conahan

SENATORS:

Peggy Reeves, Vice-Chairman
Penfield Tate
Dave Owen

200 East 14th Avenue, 3rd Floor
LEGISLATIVE SERVICES BUILDING
Denver, CO 80203
Telephone 303-866-2061

We are pleased to present the annual Budget in Brief, which includes financial facts and other information about Colorado government agencies and programs. The purpose of the booklet is to answer some of the most frequently asked questions about the state budget. More detailed information regarding state funding decisions made during the 2002 Legislative Session is available in the Fiscal Year 2002-03 Appropriations Report.

We hope you find this Budget in Brief helpful. We would appreciate any feedback regarding the format, the information included, and suggestions for future editions.

Sincerely,

A handwritten signature in cursive script that reads "Kenneth Conahan".

Kenneth Conahan
Staff Director

TABLE OF CONTENTS

Glossary 1

State Operating Budget 2

General Fund Revenues 4

Cash Fund Revenues 5

State Employees 6

General Fund Spending Limit 7

Agriculture 8

Corrections 9

Education 10

Governor 11

Health Care Policy & Financing 12

Higher Education 13

Human Services 14

Judicial Branch 16

Labor & Employment 17

Law 18

Legislative Branch 19

Local Affairs 20

Military and Veterans Affairs 21

Natural Resources 22

Personnel 23

Public Health & Environment 24

Public Safety 25

Regulatory Agencies 26

Revenue 27

State 28

Transportation 29

Treasury 30

Capital Construction 31

Legislative Liaisons 32

GLOSSARY

Capital Construction Fund: Fund into which General Fund and Lottery Fund transfers for capital construction purposes are deposited. This fund is used to build, renovate, and repair state buildings, to purchase major equipment, and to acquire land.

Cash Funds: Separate funds set up to receive earmarked revenues, such as fees and fines. These funds typically pay for the programs for which the revenues are collected. Examples are the Wildlife Cash Fund and the Disabled Telephone Users Fund.

Cash Funds Exempt: A category added in the FY 1993-94 Long Bill for cash fund appropriations that are exempt from the provisions of Article X, Section 20 of the Colorado Constitution. Such provisions impose limitations on state fiscal year spending. Examples include appropriations from cash fund reserves and donations.

Federal Funds: Funds received from the federal government. Some federal funds are grants for limited purposes. Other federal funds support ongoing state-federal programs and may require state matching funds. Examples of matching programs are Medicaid and highway construction. Federal funds are exempt from the provisions of Article X, Section 20 of the Colorado Constitution.

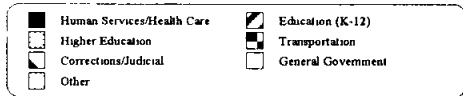
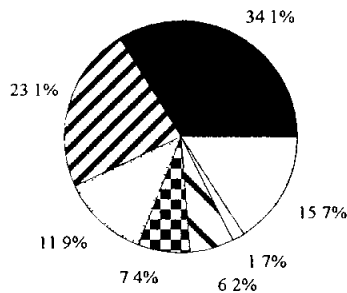
FTE: Full-time equivalent of one position continuously filled for an entire year.

General Fund: Fund into which general tax revenues, such as state sales and income taxes, are deposited. The General Fund is used to pay, in whole or in part, for state programs that benefit a majority of state citizens. Examples are education and corrections.

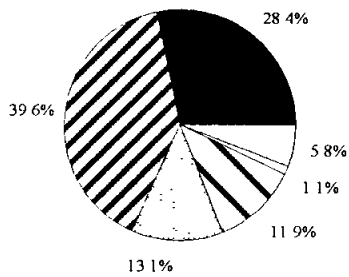
Long Bill: Colorado's annual general appropriations act.

**STATE OPERATING BUDGET
FY 2002-03**

All Funds = \$13.64 billion



General Fund = \$6.08 billion



**State Operating Budget - FY 2002-03
(\$ in millions)**

<u>Funding Source</u>	<u>Total Appropriation</u>	<u>% of Total</u>
General Fund	6,080.1	44.6%
Cash Funds	1,173.0	8.6%
Cash Funds Exempt	3,351.8	24.6%
Federal Funds	<u>3,034.5</u>	<u>22.2%</u>
TOTAL	13,639.4	100.0%

<u>Program</u>	<u>Total Appropriation</u>	<u>% of Total</u>
Human Services/Health Care	4,645.4	34.1%
Education (K-12)	3,146.0	23.1%
Higher Education	1,625.8	11.9%
Transportation	1,004.5	7.4%
Corrections & Judicial	847.7	6.2%
General Government*	227.7	1.7%
Other	<u>2,142.3</u>	<u>15.7%</u>
TOTAL	13,639.4	100.0%

<u>Program</u>	<u>General Fund</u>	<u>% of Total</u>
Education (K-12)	2,407.9	39.6%
Human Services/Health Care	1,729.6	28.4%
Higher Education	797.9	13.1%
Corrections & Judicial	723.8	11.9%
General Government*	68.4	1.1%
Other	<u>352.5</u>	<u>5.8%</u>
TOTAL	6,080.1	100.0%

*Includes the Governor's Office, the Legislature, and the Department of Personnel.

Totals may not sum due to rounding.

State General Fund Revenues - FY 2002-03
Estimate* (\$ in millions)

<u>General Fund Sources</u>	<u>Amount</u>	<u>% of Total</u>
EXCISE TAXES:		
Sales	\$1,908.6	30.0%
Use	147.1	2.3%
Cigarette	56.9	0.9%
Liquor	31.4	0.5%
Tobacco Products	<u>11.0</u>	<u>0.2%</u>
TOTAL EXCISE TAXES	\$2,155.0	33.9%
INCOME TAXES:		
Net Individual Income Tax	\$3,969.1	62.4%
Net Corporate Income Tax	231.4	3.6%
Less Amount to State		
Education Fund	<u>(\$316.5)</u>	<u>-5.0%</u>
TOTAL INCOME TAXES	\$3,884.0	61.1%
OTHER SOURCES:		
Insurance	\$145.5	2.3%
Estate	59.5	0.9%
Interest Income	26.6	0.4%
Gaming	38.8	0.6%
Court Receipts	24.9	0.4%
Pari-Mutuel	5.9	0.1%
Other	<u>19.0</u>	<u>0.3%</u>
TOTAL OTHER SOURCES	\$320.2	5.0%
GROSS GENERAL FUND	\$6,359.2	100.0%

* Source: Colorado Legislative Council Staff's March, 2002 Economic and Revenue Forecast. The March 2002 forecast was used as the basis for the FY 2002-03 budget.

Totals may not sum due to rounding.

State Cash Fund Revenues - FY 2002-03
Estimate* (\$ in millions)

<u>Cash Fund Sources</u>	<u>Amount</u>	<u>% of Total</u>
Transportation-Related **	\$845.5	34.8%
Higher Education Tuition and Other Cash Sources	713.5	29.4%
Unemployment Insurance Trust Fund	268.1	11.0%
Limited Gaming Fund	107.0	4.4%
All Other	<u>496.2</u>	<u>20.4%</u>
TOTAL CASH FUND REVENUES	\$2,430.3	100.0%

* Source: Colorado Legislative Council Staff's March, 2002 Economic and Revenue Forecast.

** Transportation-Related Revenues include Highway Users Tax Fund (HUTF) revenues, diversions to the HUTF under S.B. 97-1, and other miscellaneous revenues.

Totals may not sum due to rounding.

**Distribution of Colorado State Employees
as Appropriated by the General Assembly
FY 2002-03**

<u>Department</u>	<u>Number of FTE</u>	<u>% of Total</u>
Higher Education	18,490.8	39.4%
Corrections & Judicial	9,567.6	20.4%
Human Services	4,786.4	10.2%
Transportation	3,297.2	7.0%
Revenue	1,521.6	3.2%
Natural Resources	1,552.9	3.3%
Military Affairs	1,157.3	2.5%
Public Safety	1,262.4	2.7%
Public Health & Environment	1,117.4	2.4%
Labor & Employment	1,072.0	2.3%
Other	<u>3,112.6</u>	<u>6.6%</u>
TOTAL FTE	46,938.2	100.0%

FTE - Full-time equivalent of one position
continuously filled for an entire year.

Totals may not sum due to rounding.

State General Fund Spending Limit

Section 24-75-201.1, C.R.S.
Limit on General Fund Appropriation (6% Limit):

FY 2001-02 Base:

General Fund Appropriation	\$5,653.0 million
Allowable Growth of 6%	<u>x 1.06</u>
Limit on FY 2002-03 Appropriation	\$5,992.2 million
FY 2002-03 Appropriations	\$5,950.4 million
Less Exempt Appropriations	(4.0) million
FY 2002-03 Appropriation Subject to Limit	<u>\$5,946.4 million</u>
Over/(Under) Limit	(\$45.8 million)

DEPARTMENT OF AGRICULTURE

Donald D. Ament, Commissioner

Phone: 303-239-4100

Citizen Information: 1-800-886-7683

FY 2002-03 Appropriation

Total Funds	<u>\$31,235,627</u>
General Fund	10,618,322
Cash Funds	18,157,318
Cash Funds Exempt	1,441,221
Federal Funds	1,018,766

Percent of State Operating Appropriation	0.2%
Percent of State General Fund	0.2%

FTE 297.7

Appropriations Breakdown

<u>Division</u>	<u>General Fund</u>	<u>Total Funds</u>
Agricultural Services Division	57.3%	35.2%
Agricultural Markets Division	0.0%	2.8%
Brand Board	0.0%	11.3%
Colorado State Fair	0.0%	25.7%
Soil Conservation Board	14.0%	6.6%
Other	28.7%	18.4%
Total	100.0%	100.0%

DEPARTMENT OF CORRECTIONS

Joe Ortiz, Executive Director

Phone: 719-579-9580

Citizen Information: 1-888-613-3188

FY 2002-03 Appropriation

Total Funds	<u>\$563,546,786</u>
General Fund	495,631,310
Cash Funds	2,884,215
Cash Funds Exempt	60,464,115
Federal Funds	4,567,146

Percent of State Operating Appropriation	4.1%
Percent of State General Fund	8.2%

FTE 6,339.3

Appropriations Breakdown

<u>Division</u>	<u>General Fund</u>	<u>Total Funds</u>
Management*	19.9%	18.7%
Institutions	63.7%	56.2%
Support Services	4.6%	4.2%
Inmate Programs	7.4%	7.4%
Community Services	4.2%	3.7%
Correctional Industries	0.0%	7.6%
Other	0.2%	2.2%
Total	100.0%	100.0%

* Includes funds to reimburse counties and private facilities for holding state prisoners.

Key Facts 2002-03

State Correctional Facilities	23
Inmate Population (State and Private)	18,681
Jail Backlog	287
Inmates in Community Corrections	1,665
Inmates on Parole	4,471

DEPARTMENT OF EDUCATION

Dr. William J. Moloney,
Commissioner of Education
General Information: 303-866-6600

FY 2002-03 Appropriation

Total Funds	<u>\$3,146,030,920</u>
General Fund	2,407,932,664
Cash Funds	13,098,823
Cash Funds Exempt	353,162,886
Federal Funds	371,836,547

Percent of State Operating Appropriation	23.1%
Percent of State General Fund	39.6%

FTE 430.5

Appropriations Breakdown

<u>Section</u>	<u>General Fund</u>	<u>Total Funds</u>
Management and Administration	1.1%	1.2%
Assistance to Public Schools	98.5%	98.4%
Library Programs	0.1%	0.1%
School for the Deaf and the Blind	0.3%	0.3%
Total	100.0%	100.0%

Key Facts 2002-03

Estimated Funded Pupil Count (FTE)	715,793
Average Per Pupil Funding (including local share)	\$5,783
Percent Increase in Total Program Funding	7.3%
State Share of Total Program Funding	59.3%

Number of Grades/Subject Areas Assessed 24

School for the Deaf and the Blind
Estimated Total Enrollment 232

**GOVERNOR - LIEUTENANT GOVERNOR -
STATE PLANNING AND BUDGETING**

Bill Owens, Governor
Phone: 303-866-2471
Citizen Information: 1-800-283-7215

FY 2002-03 Appropriation

Total Funds	<u>\$43,731,245</u>
General Fund	20,420,378
Cash Funds	169,420
Cash Funds Exempt	4,039,188
Federal Funds	19,102,259

Percent of State Operating Appropriation	0.3%
Percent of State General Fund	0.3%

FTE 127.5

Appropriations Breakdown

<u>Division</u>	<u>General Fund</u>	<u>Total Funds</u>
Office of the Governor	16.1%	49.4%
Office of the Lieutenant Governor	1.4%	0.7%
Office of State Planning and Budgeting	0.0%	3.5%
Economic Development Programs	75.7%	38.7%
Office of Innovation and Technology	6.8%	7.8%
Total	100.0%	100.0%

**DEPARTMENT OF
HEALTH CARE POLICY AND FINANCING**

Karen Reinertson, Executive Director

Phone: 303-866-2993

Customer Service: 1-800-221-3943

FY 2002-03 Appropriation

Total Funds	\$2,743,031,756
General Fund	1,181,443,091
Cash Funds	751,563
Cash Funds Exempt	200,835,451
Federal Funds	1,360,001,651

Percent of State Operating Appropriation	20.1%
Percent of State General Fund	19.4%

FTE align="right">194.5

Appropriations Breakdown

Division	General Fund	Total Funds
Executive Director's Office	0.2%	0.2%
Medical Programs		
Administration	1.6%	2.2%
Medical Services Premiums	71.0%	63.1%
Indigent Care Program	1.9%	12.5%
Other Medical Services	1.4%	1.4%
Department of Human Services Medicaid-Funded Programs	23.9%	20.6%
Total	100.0%	100.0%

Key Facts 2002-03

Number of Medical Services Recipients	326,058
Average Annual Cost per Medical Services Recipient	\$5,305.19
Number of Children's Basic Health Plan Recipients Served	54,108
Average Annual Medical Cost Per Children's Basic Health Plan Recipient	\$1,090.20

**DEPARTMENT OF
HIGHER EDUCATION**

Tim Foster, Executive Director

Phone: 303-866-2723

FY 2002-03 Appropriation

Total Funds	\$1,625,753,276
General Fund	797,860,775
Cash Funds	721,409,367
Cash Funds Exempt	87,009,426
Federal Funds	19,473,708

Percent of State Operating Appropriation	11.9%
Percent of State General Fund	13.1%

FTE align="right">18,490.8

Appropriations Breakdown

Division	General Fund	Total Funds
Colorado Commission on Higher Education	0.4%	1.0%
Financial Aid	11.4%	5.7%
Governing Boards & Local District Junior Colleges:		
State Colleges	10.3%	8.1%
State Board of Agriculture	19.8%	20.8%
University of Colorado	28.3%	36.1%
Colorado School of Mines	2.6%	2.7%
Northern Colorado	5.6%	4.7%
Community Colleges	17.5%	13.4%
Local District Jr Colleges	1.9%	0.9%
Occupational Education	1.5%	3.3%
Other	0.7%	3.3%
Total	100.0%	100.0%

Key Facts 2002-03

Based on Fall 2001 Final, Spring 2002 Census Est.:

Resident Student FTE	127,632
Nonresident Student FTE	22,824

**DEPARTMENT OF
HUMAN SERVICES**

Marva Livingston Hammons, Executive Director

Information: 303-866-5700

Consumer Relations: 303-866-5825 or

1-800-536-5298

FY 2002-03 Appropriation

Total Funds	<u>\$1,902,331,960</u>
General Fund	548,120,297
Cash Funds	85,416,097
Cash Funds Exempt	786,268,138
Federal Funds	482,527,428

Percent of State Operating Appropriation 13.9%

Percent of State General Fund 9.0%

FTE 4,786.4

Appropriations Breakdown

<u>Division</u>	<u>General Fund</u>	<u>Total Funds</u>
Executive Director's Office	5.2%	2.6%
Office of Information Technology Services	3.6%	2.3%
Office of Operations	3.6%	1.9%
Office of Behavioral Health and Housing	19.7%	19.6%
Office of Rehabilitation and Disability Services	3.3%	17.8%
County Administration	6.0%	3.8%
Office of Self Sufficiency	1.3%	14.3%
Office of Adult and Veterans Services	3.2%	7.1%
Division of Child Welfare	27.0%	18.4%
Division of Child Care	3.7%	4.5%
Division of Youth Corrections	20.6%	6.6%
Division of Children's Health and Rehabilitation	2.8%	1.1%
Total	100.0%	100.0%

Key Facts 2002-03

Old Age Pension	
Average Monthly Caseload (individuals)	24,580
Aid to the Needy Disabled	
Average Monthly Caseload (individuals)	10,165

Child Support Enforcement Collections	
Estimated in FY 2003-03 (millions)	\$277.0

Child Welfare	
Average Monthly Caseload (FY 2001-02 est.)	28,000

Child Care Assistance Program	
Total Children Served (FY 2001-02 est.)	54,000

Youth Corrections - Average Daily Population	
Detention	577.2
Commitment	1411.9
Parole	845.8

Mental Health Community Programs	
Total Clients Served	80,875

Mental Health Institutes	
Average Daily Census	688.0
Average Daily Cost (Ft. Logan)	\$544.44

Residential/Comprehensive Services for Adults with Developmental Disabilities	
Persons Served	3,258
Average Cost Per Client (new resources)	\$85,834

Institutional Programs for Persons with Developmental Disabilities (Regional Centers)	
Average Daily Attendance	400.1
Average Annual Cost Per Client	\$137,378

JUDICIAL BRANCH

Mary J. Mullarkey, Chief Justice,
Colorado Supreme Court
Gerald A. Marroney, State Court Administrator
Phone: 303-861-1111

FY 2002-03 Appropriation

Total Funds	<u>\$284,163,759</u>
General Fund	228,144,226
Cash Funds	46,813,542
Cash Funds Exempt	7,271,445
Federal Funds	1,934,546

Percent of State Operating Appropriation	2.1%
Percent of State General Fund	3.8%

FTE 3,228.3

Appropriations Breakdown

<u>Division</u>	<u>General Fund</u>	<u>Total Funds</u>
Courts Administration	12.3%	12.0%
Appellate Courts	3.5%	4.6%
Trial Courts	43.2%	44.2%
Probation	18.7%	21.3%
Public Defender	13.7%	11.1%
Alternate Defense Counsel	5.3%	4.2%
Child's Representative	3.3%	2.6%
Total	100.0%	100.0%

Key Facts 2002-03

Caseload Projections

New Cases Filed	
District Courts	165,467
County Courts	461,847
Adults on Probation*	44,562
Juveniles on Probation*	9,566
Public Defender Caseload	70,030
OCR Guardian Ad-Litem Appointments	11,710

DEPARTMENT OF LABOR AND EMPLOYMENT

Vickie Armstrong, Executive Director
Phone: 303-318-8020
Citizen Information: 303-318-8000

FY 2002-03 Appropriation

Total Funds	<u>\$131,805,927</u>
General Fund	0
Cash Funds	27,163,058
Cash Funds Exempt	16,101,148
Federal Funds	88,541,721

Percent of State Operating Appropriation	1.0%
Percent of State General Fund	0.0%

FTE 1,072.0

Appropriations Breakdown

<u>Division</u>	<u>Federal Funds</u>	<u>Total Funds</u>
Executive Director	16.6%	18.2%
Employment and Training	82.8%	61.6%
Labor	0.0%	0.7%
Oil and Public Safety	0.6%	2.9%
Workers' Compensation	0.0%	16.6%
Total	100.0%	100.0%

Key Facts 2002-03

Employment and Training- Individuals Served	194,000
Applicants for Workers' Compensation Hearings	10,500
Number of Initial Unemployment Insurance Claims Established	132,657

DEPARTMENT OF LAW
Ken Salazar, Attorney General
 Phone: 303-866-3611

FY 2002-03 Appropriation

Total Funds	<u>\$33,672,032</u>
General Fund	9,589,539
Cash Funds	1,060,489
Cash Funds Exempt	22,195,984
Federal Funds	826,020

Percent of State Operating Appropriation	0.2%
Percent of State General Fund	0.2%

FTE 345.7

Appropriations Breakdown

<u>Division</u>	<u>General Fund</u>	<u>Total Funds</u>
Administration	15.8%	17.0%
Legal Services to State Agencies	0.0%	48.2%
Criminal Justice and Appellate	36.0%	15.3%
Water and Natural Resources	25.1%	7.7%
Consumer Protection	9.6%	6.6%
Special Purpose	13.5%	5.2%
Total	100.0%	100.0%

Key Facts 2002-03

Total Legal Service Hours	307,302
Attorney/Paralegal Combined Hourly Rate	\$59.80

LEGISLATIVE BRANCH

Karen Goldman, Secretary of the Senate
 Phone: 303-866-5289
Judith "J.R." Rodrigue, Chief Clerk,
House of Representatives
 Phone: 303-866-2904
Joanne Hill, State Auditor
 Phone: 303-866-2051
Kenneth Conahan, Staff Director,
Joint Budget Committee
 Phone: 303-866-2061
Charlie Brown, Director, Legislative Council
 Phone: 303-866-3521
Douglas G. Brown, Director,
Office of Legislative Legal Services
 Phone: 303-866-2045

FY 2002-03 Appropriation

Total Funds	<u>\$34,882,686</u>
General Fund	33,193,702
Cash Funds	90,000
Cash Funds Exempt	1,598,984

Percent of State Operating Appropriation	0.3%
Percent of State General Fund	0.5%

Total Staff FTE 272.8

Appropriations Breakdown

<u>Division</u>	<u>General Fund</u>	<u>Total Funds</u>
General Assembly	40.4%	38.7%
State Auditor	19.5%	23.1%
Joint Budget Committee	3.9%	3.7%
Legislative Council	22.6%	21.5%
Committee on Legal Services	13.6%	13.0%
Total	100.0%	100.0%

Key Facts 2002-03

Bills Introduced	714
Bills Passed	408

DEPARTMENT OF LOCAL AFFAIRS

Bob Brooks, Executive Director

Phone: 303-866-2771

Citizen Advocate: 1-800-536-5349

FY 2002-03 Appropriation

Total Funds	<u>\$181,061,408</u>
General Fund	9,735,370
Cash Funds	23,770,420
Cash Funds Exempt	100,046,189
Federal Funds	47,509,429

Percent of State Operating Appropriation 1.3%

Percent of State General Fund 0.2%

FTE 179.5

Appropriations Breakdown

<u>Division</u>	<u>General Fund</u>	<u>Total Funds</u>
Executive Director's Office	24.1%	1.9%
Property Taxation	33.9%	1.8%
Division of Housing	10.7%	15.3%
Division of Local Government	31.3%	81.0%
Total	100.0%	100.0%

Key Facts 2002-03

Board of Assessment Appeals - Appeals Heard 1,500

DEPARTMENT OF

MILITARY AND VETERANS AFFAIRS

Mason C. Whitney, Adjutant General

Phone: 303-677-8801

Citizen Information: 303-677-8914

FY 2002-03 Appropriation

Total Funds	<u>\$128,288,745</u>
General Fund	4,872,858
Cash Funds	25,113
Cash Funds Exempt	1,317,301
Federal Funds	122,073,473

Percent of State Operating Appropriation 0.9%

Percent of State General Fund 0.1%

FTE 1,157.3

Appropriations Breakdown

<u>Division</u>	<u>General Fund</u>	<u>Total Funds</u>
Executive Director and Army National Guard	72.7%	4.5%
Air National Guard	9.4%	2.7%
Federal Funded Programs	0.0%	91.0%
Civil Air Patrol	4.0%	0.2%
Veterans Affairs	13.9%	1.7%
Total	100.0%	100.0%

Key Facts 2002-03

Based on FY 2001-02 Totals:

Army National Guard Membership 3,346

Air National Guard Membership 1,411

Civil Air Patrol Membership (Volunteer) 1,935

**DEPARTMENT OF
NATURAL RESOURCES**

Greg Walcher, Executive Director
Citizen Advocate: 303-866-4628
General Information: 303-866-3311

FY 2002-03 Appropriation

Total Funds	<u>\$175,088,732</u>
General Funds	28,603,238
Cash Funds	33,186,151
Cash Funds Exempt	97,694,125
Federal Funds	15,605,218
Percent of State Operating Appropriation	1.3%
Percent of State General Fund	0.5%
FTE	1,552.9

Appropriations Breakdown

<u>Division</u>	<u>General Fund</u>	<u>Total Funds</u>
Executive Director's Office	22.8%	14.1%
Parks and Outdoor Recreation	15.4%	15.4%
Water Resources Division	55.9%	10.4%
Division of Wildlife	0.0%	43.9%
Other	5.9%	16.2%
Total	100.0%	100.0%

Key Facts 2002-03

Number of Active Oil & Gas Wells	23,423
Annual State Park Visitation	11,170,000
Hunting & Fishing Licenses Sold	1,525,679

DEPARTMENT OF PERSONNEL

Troy Eid, Executive Director
Phone: 303-866-6566
Citizen Information: 303-866-6566

FY 2002-03 Appropriation

Total Funds	<u>\$149,099,541</u>
General Fund	14,757,707
Cash Funds	9,548,651
Cash Funds Exempt	124,771,345
Federal Funds	21,838
Percent of State Operating Appropriation	1.1%
Percent of State General Fund	0.2%
FTE	594.6

Appropriations Breakdown

<u>Division/Program</u>	<u>General Fund</u>	<u>Total Funds</u>
Executive Director's Office	27.6%	6.7%
Human Resource Services	5.9%	27.7%
Personnel Board	2.7%	0.3%
Central Services	0.3%	33.6%
Finance and Procurement	10.6%	3.2%
Colorado Information		
Technology Services	52.9%	26.4%
Administrative Hearings	<u>0.0%</u>	<u>2.1%</u>
Total	100.0%	100.0%

Key Facts 2002-03

Total Number of state FTE Appropriated (non-Higher Education)	27,960.6
Total fleet vehicles statewide	5,685

**DEPARTMENT OF PUBLIC HEALTH
AND ENVIRONMENT**

Jane Norton, Executive Director
Main Office: 303-692-2000 or 1-800-886-7689
Citizen's Advocate: 303-692-2035

FY 2002-03 Appropriation

Total Funds	\$284,724,874
General Fund	21,609,999
Cash Funds	25,995,985
Cash Funds Exempt	82,426,226
Federal Funds	154,692,664

Percent of State Operating Appropriation	2.1%
Percent of State General Fund	0.4%

FTE 1,117.4

Appropriations Breakdown

<u>Division</u>	<u>General Fund</u>	<u>Total Funds</u>
Administrative Section	13.3%	12.4%
Environmental Section	19.8%	14.6%
Health Services Section	66.9%	73.0%
Total	100.0%	100.0%

Key Facts 2002-03

Percent of All Births Where Prenatal Care was Received During the First Trimester	81
Number of Patients Served with Family Planning Services	53,245
Number of Nursing Home Complaints and Occurrences	1,680
Percent of Two-Year Olds Who are Fully Immunized	76
Number of Environmental Inspections Performed	7,745
Number of Permits and Applications Processed	12,796

DEPARTMENT OF PUBLIC SAFETY

C. Suzanne Mencer, Executive Director
Phone: 303-239-4398
Citizen Information: 1-800-536-5339

FY 2002-03 Appropriation

Total Funds	\$193,490,353
General Fund	59,523,200
Cash Funds	7,585,691
Cash Funds Exempt	87,385,023
Federal Funds	38,996,439

Percent of State Operating Appropriation	1.4%
Percent of State General Fund	1.0%

FTE 1,262.4

Appropriations Breakdown

<u>Division</u>	<u>General Fund</u>	<u>Total Fund</u>
Colorado State Patrol	3.4%	40.5%
Division of Criminal Justice	68.5%	39.6%
Colorado Bureau of Investigation	23.7%	11.0%
Other	4.4%	8.9%
Total	100.0%	100.0%

Key Facts 2002-03

Number of Motor Vehicle Crashes	36,800
Number of Injury or Fatal Motor Vehicle Crashes	12,053
Average Daily Attendance - Community Corrections	4,610

**DEPARTMENT OF
REGULATORY AGENCIES**

M. Michael Cooke, Executive Director
Citizen Information:
303-894-7855
1-800-886-7675

FY 2002-03 Appropriation

Total Funds	<u>\$74,787,752</u>
General Fund	2,067,604
Cash Funds	50,903,643
Cash Funds Exempt	20,900,038
Federal Funds	916,467

Percent of State Operating Appropriation 0.5%
Percent of State General Fund <0.1%

FTE 540.7

Appropriations Breakdown

<u>Division</u>	<u>Cash Funds</u>	<u>Total Funds</u>
Executive Director's Office/ Administrative Services	19.9%	38.5%
Banking/Financial Services	8.1%	5.5%
Civil Rights Division	0.0%	2.9%
Insurance	14.1%	9.9%
Office of Consumer Counsel/ Public Utilities Commission	24.3%	17.3%
Real Estate	6.2%	4.2%
Registrations	23.3%	18.7%
Securities	4.2%	2.9%
Total	100.0%	100.0%

Key Facts 2002-03 (estimated)

Assets regulated by Divisions of Banking & Financial Services	\$188.6 billion
Active insurance licensees	73,000
Real estate licensees	44,750
PUC complaints handled	7,835

DEPARTMENT OF REVENUE

Fred Fisher, Executive Director
Phone: 303-866-5610
Citizen Information:
303-866-3091 or 1-800-536-5321

FY 2002-03 Appropriation

Total Funds	<u>\$541,148,558</u>
General Fund	113,401,384
Cash Funds	37,509,634
Cash Funds Exempt	388,574,049
Federal Funds	1,663,491

Percent of State Operating Appropriation 4.0%
Percent of State General Fund 1.9%

FTE 1,521.6

Appropriations Breakdown

<u>Division</u>	<u>General Fund</u>	<u>Total Funds</u>
Executive Director's Office	14.2%	4.0%
Information Technology Division	4.5%	2.2%
Taxation Business Group	58.2%	12.9%
Motor Vehicle Business Group	20.3%	7.4%
Enforcement Business Group	2.8%	73.5%
Total	100.0%	100.0%

Key Facts 2002-03

Limited Gaming Revenues (millions)	\$100.7
Lottery Ticket Sales (millions)	\$387.2
Driver Licenses and ID Cards Issued	1,658,487

DEPARTMENT OF STATE
Donetta Davidson, Secretary of State
 Phone: 303-894-2200

FY 2002-03 Appropriation

Total Funds	<u>\$13,033,114</u>
Cash Funds	12,528,142
Cash Funds Exempt	504,972
Percent of State Operating Appropriation	0.1%
Percent of State General Fund	0.0%
FTE	104.1

Appropriations Breakdown

<u>Division</u>	<u>Total Funds</u>
Administration	45.9%
Special Purpose Programs	9.8%
Information Technology Services	44.3%
Total	100.0%

Key Facts 2002-03

Business Entities Filings	194,146
Uniform Commercial Code Filings	120,707

DEPARTMENT OF TRANSPORTATION
Thomas E. Norton, Executive Director
 Phone: 303-757-9201

FY 2002-03 Appropriation

Total Funds	<u>\$1,004,526,206</u>
Cash Funds	54,949,850
Cash Funds Exempt	646,369,693
Federal Funds	303,206,663
Percent of State Operating Appropriation	7.4%
Percent of State General Fund	0.0%
FTE	3,297.2

Appropriations Breakdown

<u>Division</u>	Cash	<u>Total Funds</u>
	<u>Funds Exempt</u>	
Administration	3.4%	2.2%
Construction, Maintenance, and Operations	62.3%	74.4%
Transportation Revenue		
Anticipation Notes	34.3%	22.1%
Other	0.0%	1.3%
Total	100.0%	100.0%

Key Facts 2002-03

Percent of State Highway System in Fair/Good Condition as of 2001	54%
Active Construction Projects, July 2002	166
Total TRANS bond proceeds	\$1,294,198,792
Average Construction Cost Per Mile	
<u>Interstate (4-lanes)</u>	
New Construction	\$10,000,000
Reconstruction, Urban	\$12,000,000
Reconstruction, Rural	\$2,500,000
Resurfacing, Urban	\$600,000
Resurfacing, Rural	\$300,000
<u>Principal Arterial (2-lanes)</u>	
Resurfacing	\$150,000

DEPARTMENT OF THE TREASURY

Mike Coffman, State Treasurer

Phone: 303-866-2441

FY 2002-03 Appropriation

Total Funds	<u>\$353,985,028</u>
General Fund	92,526,612
Cash Funds Exempt	261,458,416

Percent of State Operating Appropriation	2.6%
Percent of State General Fund	1.5%

FTE 25.0

Appropriations Breakdown

<u>Division</u>	<u>General Fund</u>	<u>Total Funds</u>
Administration, Special Purpose, and Unclaimed Property Programs	68.8%	18.2%
Fire and Police Pension Association	31.2%	8.2%
Appropriated Counties and Municipalities	0.0%	73.6%
Total	100.0%	100.0%

Key Facts 2002-03

Treasury Investments FY 2001-02:

General Fund Interest Income	\$23.5 million
Cash Funds Interest Income	\$134.5 million

CAPITAL CONSTRUCTION

FY 2002-03 Appropriation

Total Funds	<u>\$213,643,727</u>
Capital Construction Fund Exempt	23,496,606
Cash Fund	45,126,854
Cash Fund Exempt	128,907,798
Federal Funds	16,112,469

Appropriations Breakdown

<u>Department</u>	<u>Capital Construction Fund Exempt</u>	<u>Total Funds</u>
Corrections	5.5%	1.3%
Higher Education	29.5%	43.8%
Human Services	17.8%	9.5%
Personnel	34.0%	4.5%
Health Care Policy & Financing	10.9%	2.4%
Other	2.3%	38.4%
Total	100.0%	100.0%

LEGISLATIVE LIAISONS

EXECUTIVE BRANCH AGENCIES

Agriculture	Bob McLavey	303-239-4100
Corrections	Alison Morgan	303-307-2207
Education	Karen Stroup	303-866-6822
Governor's Office	Mike Beasley	303-866-2471
Health Care Policy & Financing	Barbara Primus	303-866-2708
Higher Education	Brian Burnett	303-866-2723
Human Services	Carol Taylor	303-866-5900
Labor & Employment	Mike McArdle	303-318-8003
Local Affairs	Linda Rice	303-866-6249
Military Affairs	Walter Paul	303-677-8804
Natural Resources	Ron Cattany	303-866-3311
Personnel	Jeff Woodhouse	303-866-6484
Public Health & Environment	Moira Cullen	303-692-3471
Public Safety	Debbie Wagner	303-239-5765
Regulatory Agencies	Diane Reimer	303-894-2339
Revenue	Steve Tool	303-866-2819
Transportation	Jennifer Webster	303-757-9703

ELECTED OFFICIALS

Law	Ken Lane	303-866-3557
State	Bill Hobbs	303-894-2200
Treasury	Ben Stein	303-866-2441

JUDICIAL BRANCH

Judicial	Kim Morss	303-861-1111
----------	-----------	--------------